

# V&V Reference Report

## L2 ASCDS Version : 7.6.8.1

Observation 61307 - L2 Version 001  
Chandra X-Ray Center

L2 Processing Date : Sep 2 2006

## Contents

<b>1</b>	<b>Front</b>	<b>2</b>
<b>2</b>	<b>OBI</b>	<b>3</b>
2.1	OBI . . . . .	3
2.1.1	Images . . . . .	3
2.1.2	Bias . . . . .	3
2.1.3	Parameters . . . . .	4
2.1.4	Events . . . . .	4
2.2	Compared Parameters . . . . .	5
2.3	Aspect . . . . .	6
2.4	Star Slots . . . . .	8
2.5	FID Slots . . . . .	8
<b>A</b>	<b>Summary</b>	<b>9</b>
A.1	Status . . . . .	9
A.2	Comments . . . . .	9

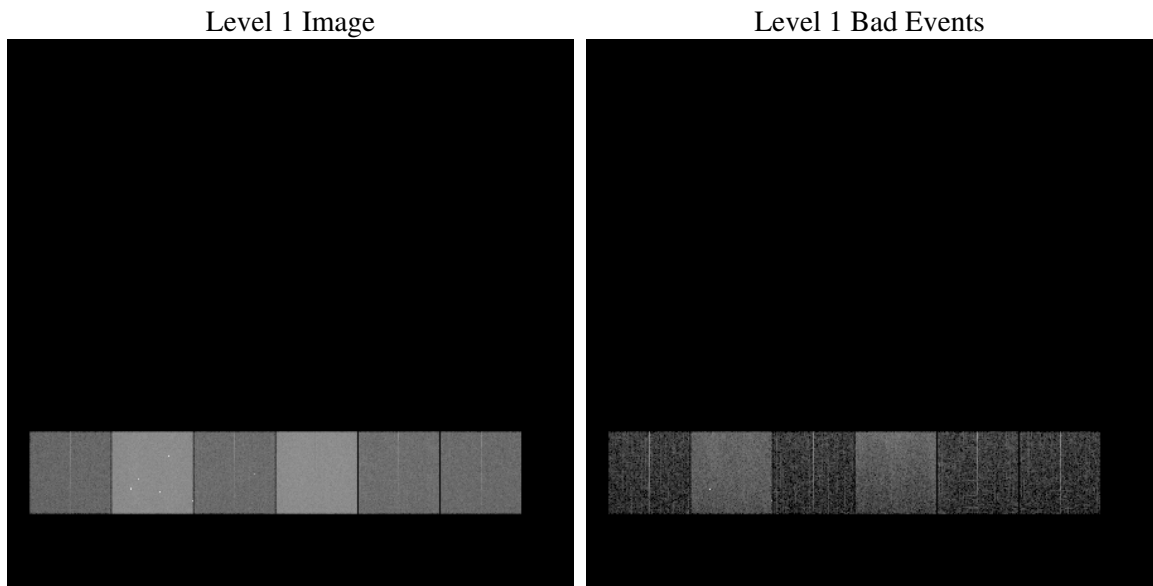
# 1 Front

seq_num	&#160
obs_id	61307
title	ACIS-456789 diagnostics
observer	CHANDRA engineering request/realtime commanding
object	&#160
dtcycle	0
cycle	P
ra_targ	0.0
dec_targ	0.0
ra_nom	181.9953780118
dec_nom	-0.97173939915478
roll_nom	66.456727981746
revision	2
ontime	6468.6981412023
livetime	6386.787590356
ontime4	2313.7432614714
ontime5	6906.2284480482
ontime6	2537.3748315722
ontime7	6468.6981412023
ontime8	2600.1188165843
ontime9	2505.9239849299
l2events	1165785

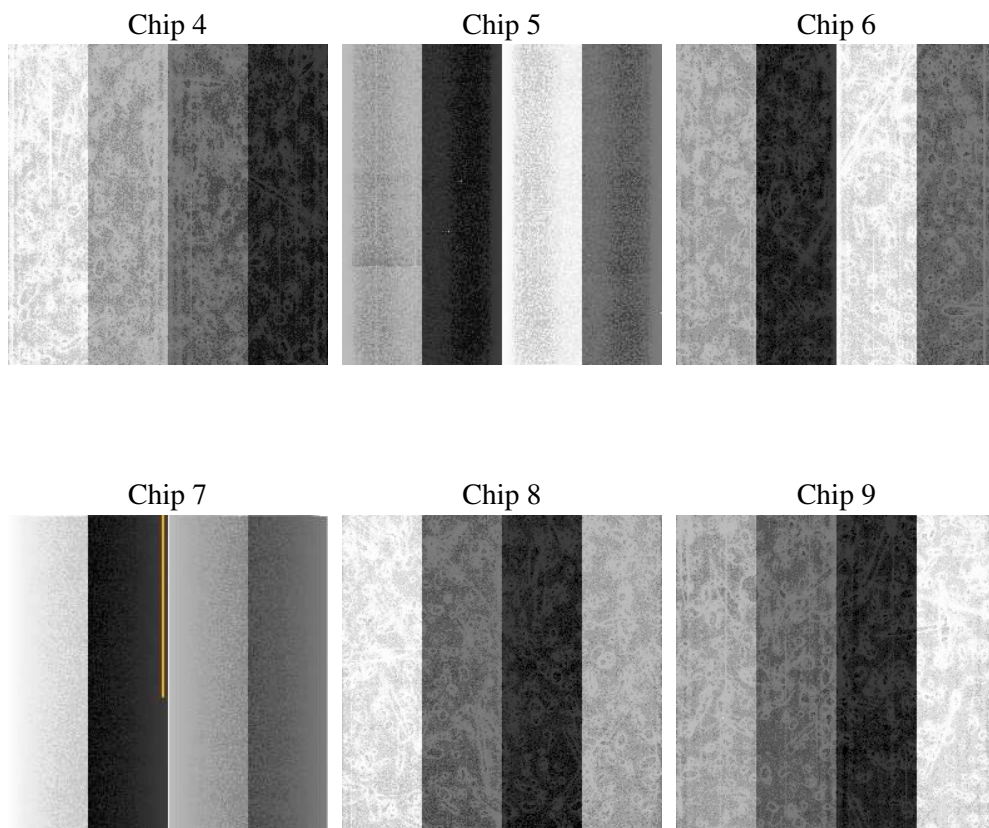
## 2 OBI

### 2.1 OBI

#### 2.1.1 Images



#### 2.1.2 Bias



### 2.1.3 Parameters

obi_num	0
ascdsver	7.6.8.1
caldsver	3.2.3
date	2006-09-02T18:59:21
revision	2

sched_exp_time	0.0
ontime	6472.2963715196
ontime4	2317.3414917886
ontime5	6909.8266783655
ontime6	2540.9730618894
ontime7	6472.2963715196
ontime8	2602.5524829328
ontime9	2508.56285128
l1events	1420447

### 2.1.4 Events

	ccd 4	ccd 5	ccd 6	ccd 7	ccd 8	ccd 9
level 1 events	140719	392974	162833	397986	170917	155018
rejected events	20749	61499	21055	51758	23250	20268
rejected %	14%	15%	12%	13%	13%	13%

	ccd 4	ccd 5	ccd 6	ccd 7	ccd 8	ccd 9
grade 0 events	67442	40978	77261	60196	81058	73939
	47%	10%	47%	15%	47%	47%
grade 1 events	390	149	380	146	391	368
	0%	0%	0%	0%	0%	0%
grade 2 events	21840	158475	25034	107093	26212	23798
	15%	40%	15%	26%	15%	15%
grade 3 events	7204	10811	8499	24778	9201	8290
	5%	2%	5%	6%	5%	5%
grade 4 events	7034	10256	8395	24260	9431	8331
	4%	2%	5%	6%	5%	5%
grade 5 events	1239	6822	1468	6719	1674	1412
	0%	1%	0%	1%	0%	0%
grade 6 events	16620	111109	22782	130088	21949	20558
	11%	28%	13%	32%	12%	13%
grade 7 events	18950	54374	19014	44706	21001	18322
	13%	13%	11%	11%	12%	11%

## 2.2 Compared Parameters

Parameter	Planned	Actual	Parameter	Planned	Actual
Instrument	ACIS	ACIS	Obspar format version number	6	6
Detector	ACIS-456789	ACIS-456789	Obspar file type	PREDICTED	ACTUAL
Grating	NONE	NONE	Obspar update status	NONE	UPDATED
Data mode	FAINT	FAINT	On-chip summing requested	N	N
Observation mode	SECONDARY	SECONDARY	Subarray requested	NONE	NONE
Pointing RA	0	181.995378011799	Alternating exposures requested	N	N
Pointing Dec	0	-0.9717393991547782	Primary exposure time	0.000000	3.2
Pointing Roll	0.0	66.45672798174583			
SIM focus pos (mm)	-0.684267	-0.7809083437167272			
SIM defocus (mm)	0	0.7524282956875696			
SIM translation stage pos (mm)	-190.132523	250.466033080201			
SIM translation stage offset (mm)	0	-0.01005468664627074			
Observation start time	130218843.153	130218842.38497			
Observation start date	2002-02-16T03:54:03	2002-02-16T03:54:02			
Observation end time	130246831.805	130246831.03609			
Observation end date	2002-02-16T11:40:32	2002-02-16T11:40:31			
Read mode	TIMED	TIMED			

## 2.3 Aspect



## **2.4 Star Slots**

## **2.5 FID Slots**



# A Summary

## A.1 Status

V&V Scientist	Jen Lauer
V&V Date (YYYY-MM-DD)	2006.09.05
V&V Edition	1
V&V Disposition and Status	OK
V&V Charge Time	6.46869814

## A.2 Comments

The ACIS focal plane temperature was above calibration limits for the entire observation.