

V&V Reference Report

L2 ASCDS Version : 7.6.8.1

Observation 61302 - L2 Version 001
Chandra X-Ray Center

L2 Processing Date : Sep 2 2006

Contents

1	Front	2
2	OBI	3
2.1	OBI	3
2.1.1	Images	3
2.1.2	Bias	3
2.1.3	Parameters	4
2.1.4	Events	4
2.2	Compared Parameters	5
2.3	Aspect	6
2.4	Star Slots	8
2.5	FID Slots	8
A	Summary	9
A.1	Status	9
A.2	Comments	9

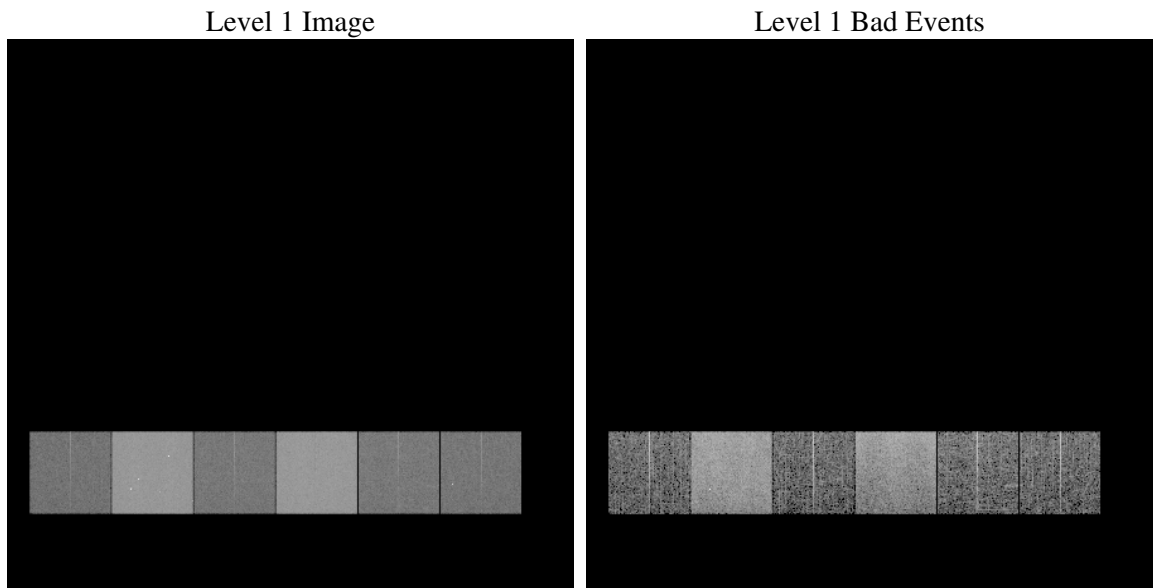
1 Front

seq_num	
obs_id	61302
title	ACIS-456789 diagnostics
observer	CHANDRA engineering request/realtime commanding
object	
dtcycle	0
cycle	P
ra_targ	0.0
dec_targ	0.0
ra_nom	280.00107116206
dec_nom	40.028580241955
roll_nom	55.573889831588
revision	2
ontime	7209.791104421
livetime	7118.4963882418
ontime4	2643.7892640382
ontime5	7734.8261270821
ontime6	2853.9089979827
ontime7	7209.791104421
ontime8	2896.0425277799
ontime9	2782.9895544201
l2events	1301684

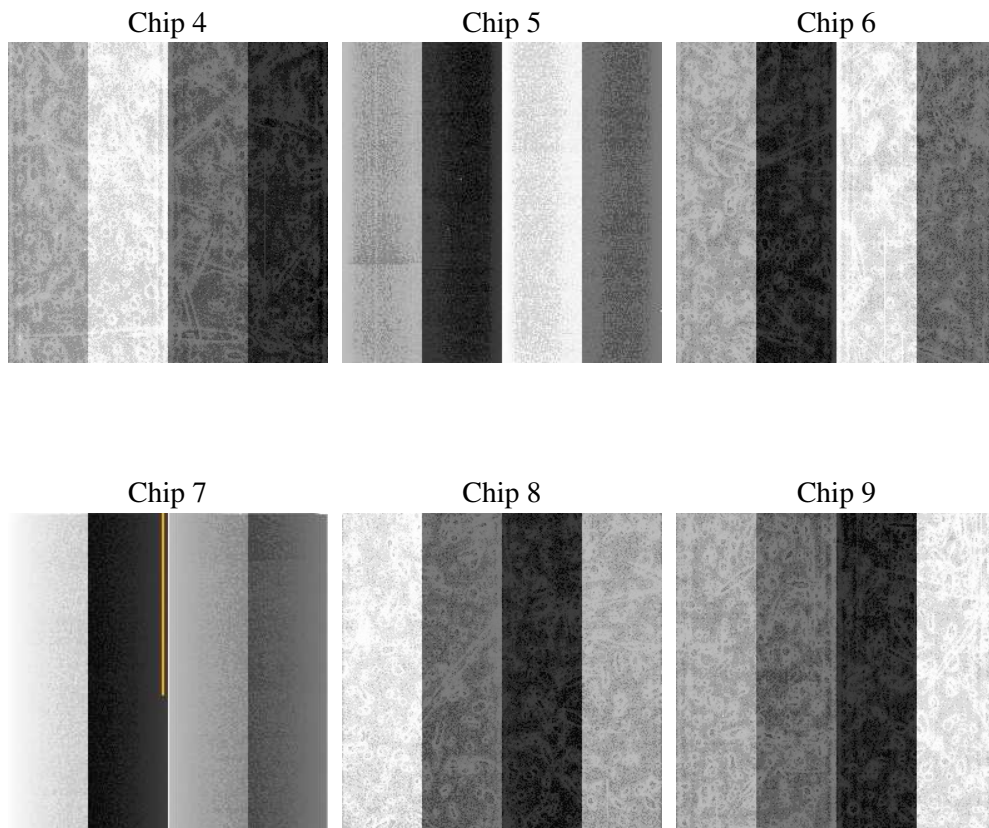
2 OBI

2.1 OBI

2.1.1 Images



2.1.2 Bias



2.1.3 Parameters

obi_num	0
ascdsver	7.6.8.1
caldsver	3.2.3
date	2006-09-02T19:40:55
revision	2

sched_exp_time	0.0
ontime	7211.2354881018
ontime4	2644.6860214323
ontime5	7736.2705107629
ontime6	2855.3533816636
ontime7	7211.2354881018
ontime8	2897.4869114608
ontime9	2784.0504718125
l1events	1571430

2.1.4 Events

	ccd 4	ccd 5	ccd 6	ccd 7	ccd 8	ccd 9
level 1 events	158747	432399	181311	439399	186832	172742
rejected events	22060	66489	21634	54705	24366	22045
rejected %	13%	15%	11%	12%	13%	12%

	ccd 4	ccd 5	ccd 6	ccd 7	ccd 8	ccd 9
grade 0 events	77259	44578	86942	69502	88961	82609
	48%	10%	47%	15%	47%	47%
grade 1 events	454	126	437	168	436	459
	0%	0%	0%	0%	0%	0%
grade 2 events	24065	175293	27855	116359	28464	26555
	15%	40%	15%	26%	15%	15%
grade 3 events	8237	12222	9723	28647	10438	9231
	5%	2%	5%	6%	5%	5%
grade 4 events	8340	11947	9868	27752	10515	9328
	5%	2%	5%	6%	5%	5%
grade 5 events	1392	7622	1635	7229	1870	1623
	0%	1%	0%	1%	1%	0%
grade 6 events	18786	121870	25289	142434	24088	22974
	11%	28%	13%	32%	12%	13%
grade 7 events	20214	58741	19562	47308	22060	19963
	12%	13%	10%	10%	11%	11%

2.2 Compared Parameters

Parameter	Planned	Actual	Parameter	Planned	Actual
Instrument	ACIS	ACIS	Obspar format version number	6	6
Detector	ACIS-456789	ACIS-456789	Obspar file type	PREDICTED	ACTUAL
Grating	NONE	NONE	Obspar update status	NONE	UPDATED
Data mode	FAINT	FAINT	On-chip summing requested	N	N
Observation mode	SECONDARY	SECONDARY	Subarray requested	NONE	NONE
Pointing RA	0	280.0010711620582	Alternating exposures requested	N	N
Pointing Dec	0	40.02858024195538	Primary exposure time	3.2	3.2
Pointing Roll	0.0	55.57388983158751			
SIM focus pos (mm)	-0.684267	-0.7809083437167272			
SIM defocus (mm)	0	0.7524282956875696			
SIM translation stage pos (mm)	-190.132523	250.466033080201			
SIM translation stage offset (mm)	0	-0.01005468664627074			
Observation start time	130485287.814193	130485287.04572			
Observation start date	2002-02-19T05:54:48	2002-02-19T05:54:47			
Observation end time	130497007.664667	130497006.89619			
Observation end date	2002-02-19T09:10:08	2002-02-19T09:10:06			
Read mode	TIMED	TIMED			

2.3 Aspect

2.4 Star Slots

2.5 FID Slots

A Summary

A.1 Status

V&V Scientist	Jen Lauer
V&V Date (YYYY-MM-DD)	2006.09.05
V&V Edition	1
V&V Disposition and Status	OK
V&V Charge Time	7.2097911

A.2 Comments