

V&V Reference Report

L2 ASCDS Version : 7.6.8.1

Observation 61280 - L2 Version 001
Chandra X-Ray Center

L2 Processing Date : Sep 6 2006

Contents

1	Front	2
2	OBI	3
2.1	OBI	3
2.1.1	Images	3
2.1.2	Bias	3
2.1.3	Parameters	4
2.1.4	Events	4
2.2	Compared Parameters	5
2.3	Aspect	6
2.4	Star Slots	8
2.5	FID Slots	8
A	Summary	9
A.1	Status	9
A.2	Comments	9

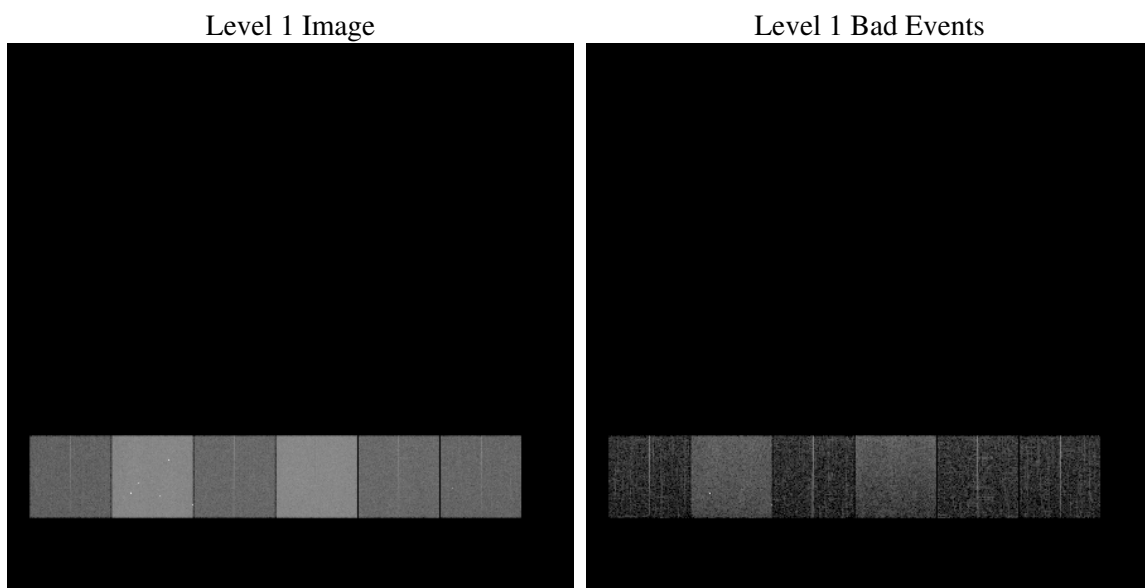
1 Front

seq_num	
obs_id	61280
title	ACIS-456789 diagnostics
observer	CHANDRA engineering request/realtime commanding
object	
dtcycle	0
cycle	P
ra_targ	0.0
dec_targ	0.0
ra_nom	150.03206902104
dec_nom	-29.993135613927
roll_nom	341.0734327779
revision	2
ontime	6678.6510796547
livetime	6594.0819782832
ontime4	2381.2175998986
ontime5	7122.7043667436
ontime6	2689.0750600845
ontime7	6678.6510796547
ontime8	2705.3620114774
ontime9	2604.6850200593
l2events	1198952

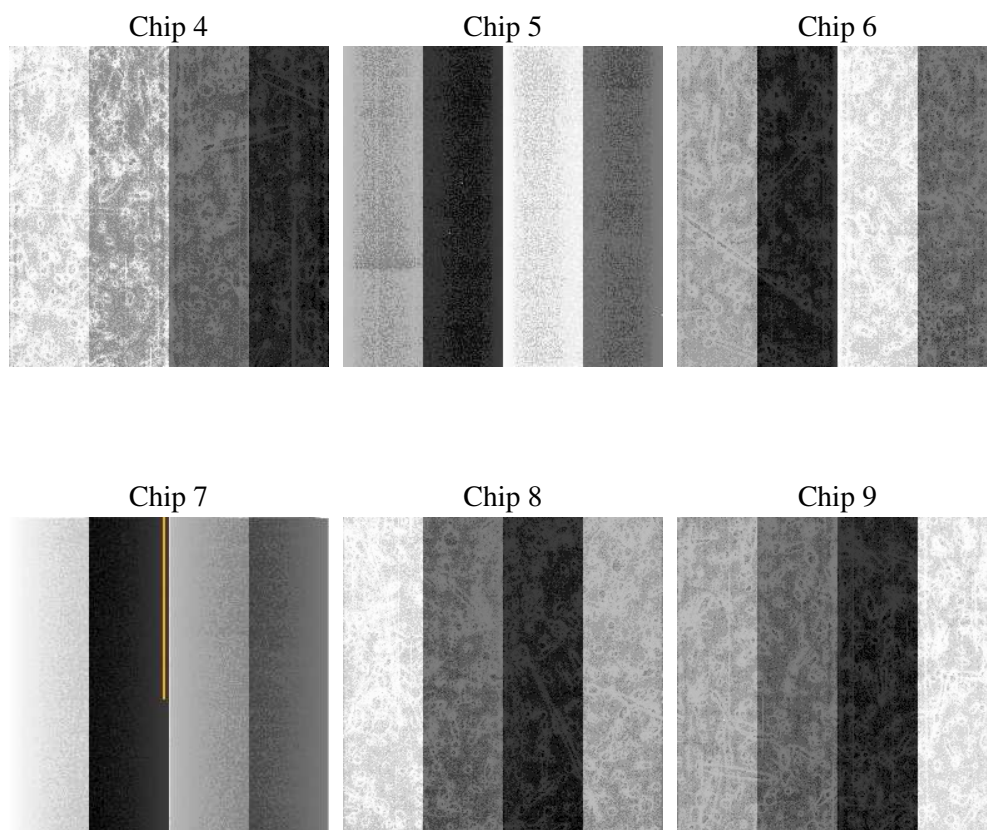
2 OBI

2.1 OBI

2.1.1 Images



2.1.2 Bias



2.1.3 Parameters

obi_num	0
ascdsver	7.6.8.1
caldsver	3.2.3
date	2006-09-06T06:46:08
revision	2

sched_exp_time	0.0
ontime	6679.7186320573
ontime4	2382.1620323062
ontime5	7123.7308791429
ontime6	2690.0605324954
ontime7	6679.7186320573
ontime8	2706.2654038817
ontime9	2605.7936124653
l1events	1449768

2.1.4 Events

	ccd 4	ccd 5	ccd 6	ccd 7	ccd 8	ccd 9
level 1 events	141608	398637	169772	405819	174172	159760
rejected events	20346	62435	20571	48405	23080	21225
rejected %	14%	15%	12%	11%	13%	13%

	ccd 4	ccd 5	ccd 6	ccd 7	ccd 8	ccd 9
grade 0 events	68477	40761	81609	66977	82961	75825
	48%	10%	48%	16%	47%	47%
grade 1 events	366	135	393	141	421	393
	0%	0%	0%	0%	0%	0%
grade 2 events	21457	161424	25988	107687	26844	24499
	15%	40%	15%	26%	15%	15%
grade 3 events	7447	10971	9005	27314	9595	8523
	5%	2%	5%	6%	5%	5%
grade 4 events	7319	10849	9192	26866	9417	8692
	5%	2%	5%	6%	5%	5%
grade 5 events	1288	7706	1509	6533	1688	1454
	0%	1%	0%	1%	0%	0%
grade 6 events	16562	112197	23407	128570	22275	20996
	11%	28%	13%	31%	12%	13%
grade 7 events	18692	54594	18669	41731	20971	19378
	13%	13%	10%	10%	12%	12%

2.2 Compared Parameters

Parameter	Planned	Actual	Parameter	Planned	Actual
Instrument	ACIS	ACIS	Obspar format version number	6	6
Detector	ACIS-456789	ACIS-456789	Obspar file type	PREDICTED	ACTUAL
Grating	NONE	NONE	Obspar update status	NONE	UPDATED
Data mode	FAINT	FAINT	On-chip summing requested	N	N
Observation mode	SECONDARY	SECONDARY	Subarray requested	NONE	NONE
Pointing RA	0	150.032069021044	Alternating exposures requested	N	N
Pointing Dec	0	-29.99313561392719	Primary exposure time	0.000000	3.2
Pointing Roll	0.0	341.0734327778977			
SIM focus pos (mm)	-0.684267	-0.6828225247311905			
SIM defocus (mm)	0	0.8505141146731063			
SIM translation stage pos (mm)	-190.132523	250.466033080201			
SIM translation stage offset (mm)	0	-0.01005468664627074			
Observation start time	131355336.549	131355335.78089			
Observation start date	2002-03-01T07:35:37	2002-03-01T07:35:35			
Observation end time	131394046.701	131394045.93245			
Observation end date	2002-03-01T18:20:47	2002-03-01T18:20:45			
Read mode	TIMED	TIMED			

2.3 Aspect

2.4 Star Slots

2.5 FID Slots

A Summary

A.1 Status

V&V Scientist	Jen Lauer
V&V Date (YYYY-MM-DD)	2006.09.06
V&V Edition	1
V&V Disposition and Status	OK
V&V Charge Time	6.67865107

A.2 Comments

The ACIS focal plane temperature was above calibration limits for the entire observation.