

V&V Reference Report

L2 ASCDS Version : 7.6.8.1

Observation 61274 - L2 Version 001
Chandra X-Ray Center

L2 Processing Date : Sep 6 2006

Contents

1	Front	2
2	OBI	3
2.1	OBI	3
2.1.1	Images	3
2.1.2	Bias	3
2.1.3	Parameters	4
2.1.4	Events	4
2.2	Compared Parameters	5
2.3	Aspect	6
2.4	Star Slots	8
2.5	FID Slots	8
A	Summary	9
A.1	Status	9
A.2	Comments	9

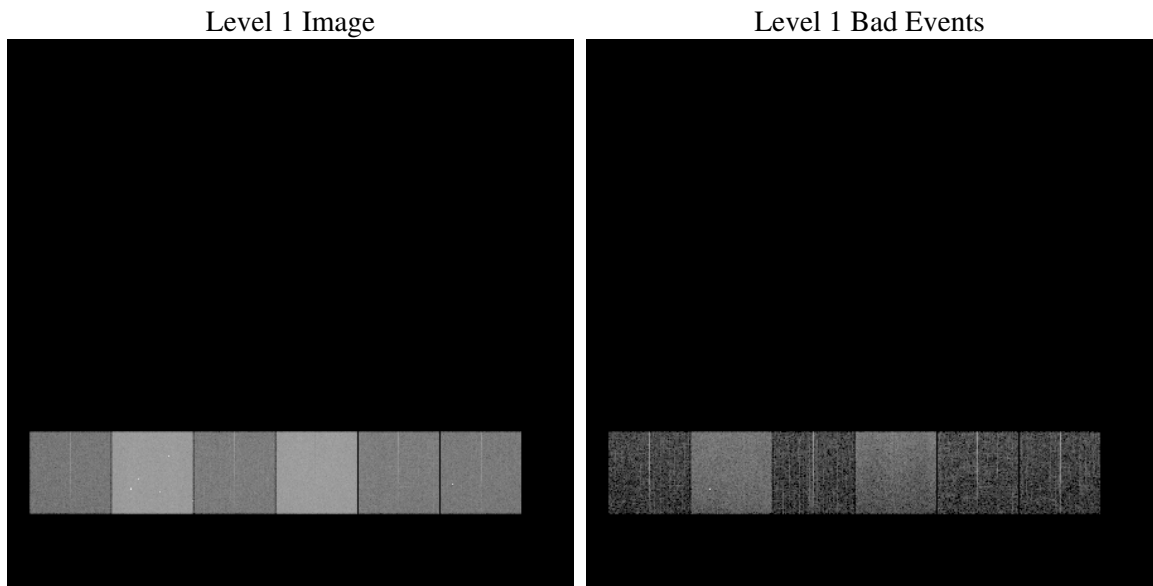
1 Front

seq_num	
obs_id	61274
title	ACIS-456789 diagnostics
observer	CHANDRA engineering request/realtime commanding
object	
dtcycle	0
cycle	P
ra_targ	0.0
dec_targ	0.0
ra_nom	95.017688856782
dec_nom	1.9774813097832
roll_nom	275.30364455619
revision	2
ontime	6719.3246979415
livetime	6634.2405627246
ontime4	2419.2945949882
ontime5	7192.5044279546
ontime6	2655.8489262164
ontime7	6719.3246979415
ontime8	2639.7259059101
ontime9	2567.6212138832
l2events	1197975

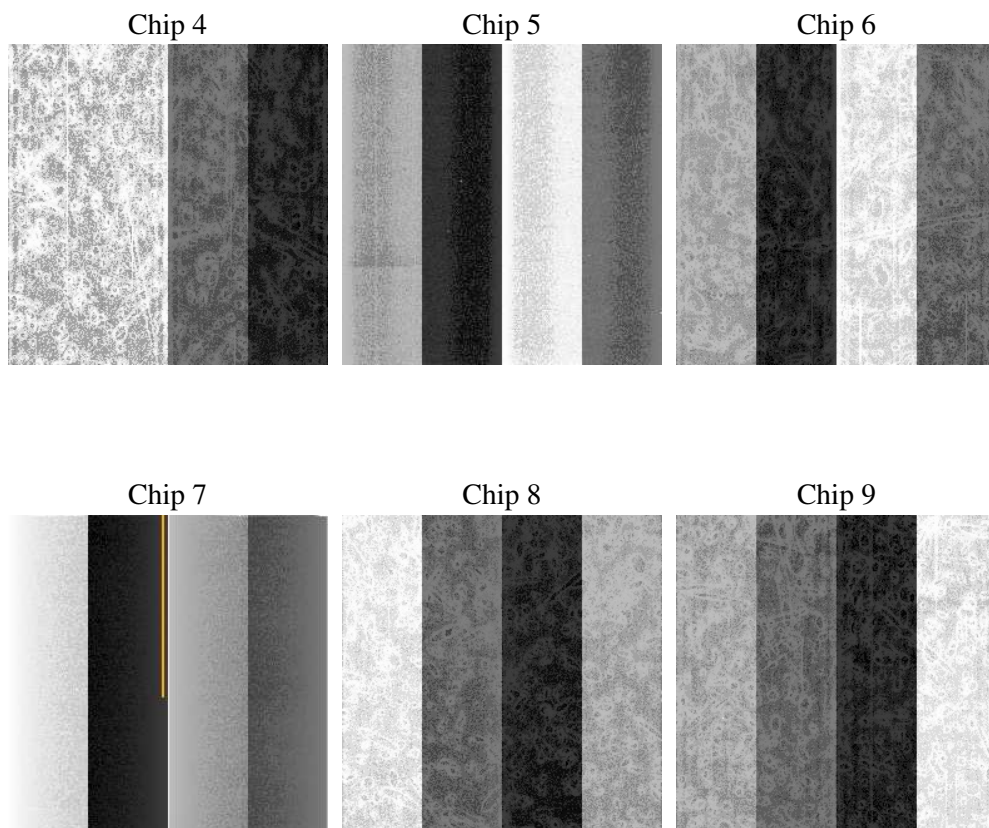
2 OBI

2.1 OBI

2.1.1 Images



2.1.2 Bias



2.1.3 Parameters

obi_num	1
ascdsver	7.6.8.1
caldsver	3.2.3
date	2006-09-06T19:21:44
revision	2

sched_exp_time	0.0
ontime	6721.8456555456
ontime4	2421.054411605
ontime5	7195.0253855586
ontime6	2657.6497828364
ontime7	6721.8456555456
ontime8	2641.4446825236
ontime9	2570.1421714872
l1events	1448654

2.1.4 Events

	ccd 4	ccd 5	ccd 6	ccd 7	ccd 8	ccd 9
level 1 events	143673	400731	168553	407853	169929	157915
rejected events	20317	62498	21509	49447	23117	20640
rejected %	14%	15%	12%	12%	13%	13%

	ccd 4	ccd 5	ccd 6	ccd 7	ccd 8	ccd 9
grade 0 events	70010	41457	80536	67773	80768	75626
	48%	10%	47%	16%	47%	47%
grade 1 events	386	121	377	159	399	347
	0%	0%	0%	0%	0%	0%
grade 2 events	21883	162164	25359	107006	25959	24057
	15%	40%	15%	26%	15%	15%
grade 3 events	7673	11357	9005	27179	9267	8519
	5%	2%	5%	6%	5%	5%
grade 4 events	7462	11246	8996	26940	9295	8574
	5%	2%	5%	6%	5%	5%
grade 5 events	1284	7062	1472	6751	1708	1583
	0%	1%	0%	1%	1%	1%
grade 6 events	16478	112136	23335	129667	21708	20673
	11%	27%	13%	31%	12%	13%
grade 7 events	18497	55188	19473	42378	20825	18536
	12%	13%	11%	10%	12%	11%

2.2 Compared Parameters

Parameter	Planned	Actual	Parameter	Planned	Actual
Instrument	ACIS	ACIS	Obspar format version number	6	6
Detector	ACIS-456789	ACIS-456789	Obspar file type	PREDICTED	ACTUAL
Grating	NONE	NONE	Obspar update status	NONE	UPDATED
Data mode	FAINT	FAINT	On-chip summing requested	N	N
Observation mode	SECONDARY	SECONDARY	Subarray requested	NONE	NONE
Pointing RA	0	95.01768885678158	Alternating exposures requested	N	N
Pointing Dec	0	1.977481309783156	Primary exposure time	0.000000	3.2
Pointing Roll	0.0	275.303644556188			
SIM focus pos (mm)	-0.684267	-0.6828225247311905			
SIM defocus (mm)	0	0.8505141146731063			
SIM translation stage pos (mm)	-190.132523	250.4635187648994			
SIM translation stage offset (mm)	0	-0.007540371344731511			
Observation start time	131812148.318	131812147.54936			
Observation start date	2002-03-06T14:29:08	2002-03-06T14:29:07			
Observation end time	131847258.669	131847257.90078			
Observation end date	2002-03-07T00:14:19	2002-03-07T00:14:17			
Read mode	TIMED	TIMED			

2.3 Aspect

2.4 Star Slots

2.5 FID Slots

A Summary

A.1 Status

V&V Scientist	Jen Lauer
V&V Date (YYYY-MM-DD)	2006.09.07
V&V Edition	1
V&V Disposition and Status	OK
V&V Charge Time	6.71932469

A.2 Comments