

# V&V Reference Report

## L2 ASCDS Version : 7.6.8.1

Observation 61273 - L2 Version 001  
Chandra X-Ray Center

L2 Processing Date : Sep 6 2006

## Contents

<b>1</b>	<b>Front</b>	<b>2</b>
<b>2</b>	<b>OBI</b>	<b>3</b>
2.1	OBI . . . . .	3
2.1.1	Images . . . . .	3
2.1.2	Bias . . . . .	3
2.1.3	Parameters . . . . .	4
2.1.4	Events . . . . .	4
2.2	Compared Parameters . . . . .	5
2.3	Aspect . . . . .	6
2.4	Star Slots . . . . .	8
2.5	FID Slots . . . . .	8
<b>A</b>	<b>Summary</b>	<b>9</b>
A.1	Status . . . . .	9
A.2	Comments . . . . .	9

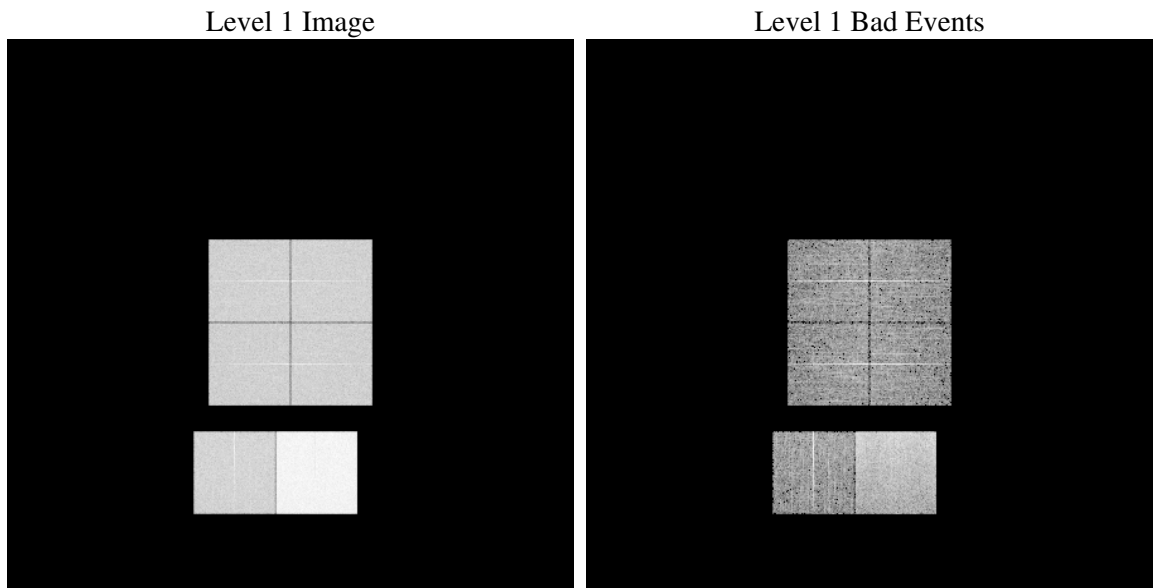
# 1 Front

seq_num	&#160
obs_id	61273
title	ACIS-012367 diagnostics
observer	CHANDRA engineering request/realtime commanding
object	&#160
dtcycle	0
cycle	P
ra_targ	0.0
dec_targ	0.0
ra_nom	95.017621934432
dec_nom	1.9774254200658
roll_nom	275.13020142071
revision	2
ontime	8374.4000077993
livetime	8268.3583124422
ontime0	3410.2221730649
ontime1	3504.2526857257
ontime2	3235.2890007347
ontime3	3299.0296972692
ontime6	3533.5038564056
ontime7	8374.4000077993
l2events	1298469

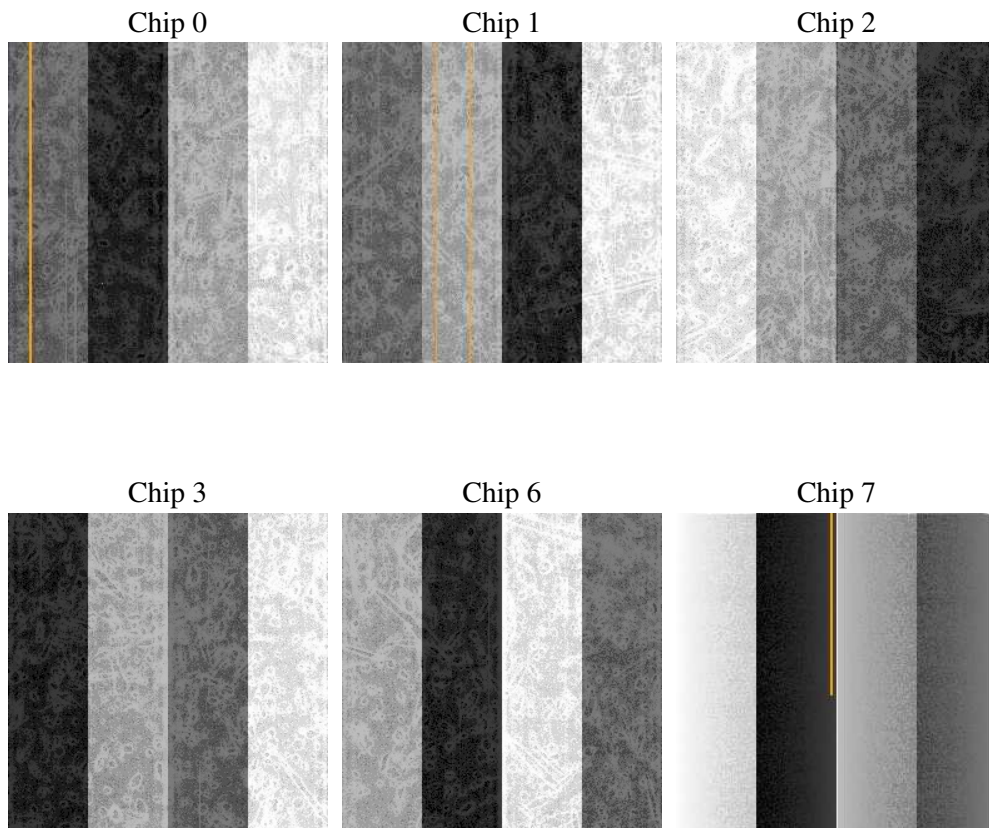
## 2 OBI

### 2.1 OBI

#### 2.1.1 Images



#### 2.1.2 Bias



### 2.1.3 Parameters

obi_num	1
ascdsver	7.6.8.1
caldsver	3.2.3
date	2006-09-06T19:37:29
revision	2

sched_exp_time	0.0
ontime	8462.2511821538
ontime0	3451.7020400017
ontime1	3539.2095024139
ontime2	3270.2048372477
ontime3	3328.5431781709
ontime6	3571.6196131706
ontime7	8462.2511821538
l1events	1562064

### 2.1.4 Events

	ccd 0	ccd 1	ccd 2	ccd 3	ccd 6	ccd 7
level 1 events	207733	211547	200317	203857	224937	513673
rejected events	28169	27292	27664	27608	29939	67354
rejected %	13%	12%	13%	13%	13%	13%

	ccd 0	ccd 1	ccd 2	ccd 3	ccd 6	ccd 7
grade 0 events	100174	102745	96835	98746	107188	83192
	48%	48%	48%	48%	47%	16%
grade 1 events	553	481	509	572	584	200
	0%	0%	0%	0%	0%	0%
grade 2 events	32291	32707	30373	31365	34005	135185
	15%	15%	15%	15%	15%	26%
grade 3 events	11750	11740	10931	11371	12337	33830
	5%	5%	5%	5%	5%	6%
grade 4 events	11511	11971	11301	11388	12341	33379
	5%	5%	5%	5%	5%	6%
grade 5 events	1779	1833	1668	1785	2002	8718
	0%	0%	0%	0%	0%	1%
grade 6 events	26137	27008	25125	24976	31300	165316
	12%	12%	12%	12%	13%	32%
grade 7 events	23538	23062	23575	23654	25180	53853
	11%	10%	11%	11%	11%	10%

## 2.2 Compared Parameters

Parameter	Planned	Actual	Parameter	Planned	Actual
Instrument	ACIS	ACIS	Obspar format version number	6	6
Detector	ACIS-012367	ACIS-012367	Obspar file type	PREDICTED	ACTUAL
Grating	NONE	NONE	Obspar update status	NONE	UPDATED
Data mode	FAINT	FAINT	On-chip summing requested	N	N
Observation mode	SECONDARY	SECONDARY	Subarray requested	NONE	NONE
Pointing RA	0	95.01762193443199	Alternating exposures requested	N	N
Pointing Dec	0	1.977425420065764	Primary exposure time	0.000000	3.2
Pointing Roll	0.0	275.1302014207145			
SIM focus pos (mm)	-0.782348	-0.6828225247311905			
SIM defocus (mm)	0	0.8505141146731063			
SIM translation stage pos (mm)	-233.592463	250.4635187648994			
SIM translation stage offset (mm)	0	-0.007540371344731511			
Observation start time	131847258.669	131847257.90078			
Observation start date	2002-03-07T00:14:19	2002-03-07T00:14:17			
Observation end time	131868568.42	131868567.65164			
Observation end date	2002-03-07T06:09:28	2002-03-07T06:09:27			
Read mode	TIMED	TIMED			

## 2.3 Aspect



## **2.4 Star Slots**

## **2.5 FID Slots**



## A Summary

### A.1 Status

V&V Scientist	Jen Lauer
V&V Date (YYYY-MM-DD)	2006.09.07
V&V Edition	1
V&V Disposition and Status	OK
V&V Charge Time	8.3744

### A.2 Comments