

V&V Reference Report

L2 ASCDS Version : 8.4.5

Observation 61271 - L2 Version 3
Chandra X-Ray Center

L2 Processing Date : Oct 3 2012

Contents

1	Front	2
2	OBI	3
2.1	OBI	3
2.1.1	Images	3
2.1.2	Bias	3
2.1.3	Parameters	4
2.1.4	Events	4
2.2	Compared Parameters	5
2.3	Star Slots	6
2.4	FID Slots	6
A	Summary	7
A.1	Status	7
A.2	Comments	7

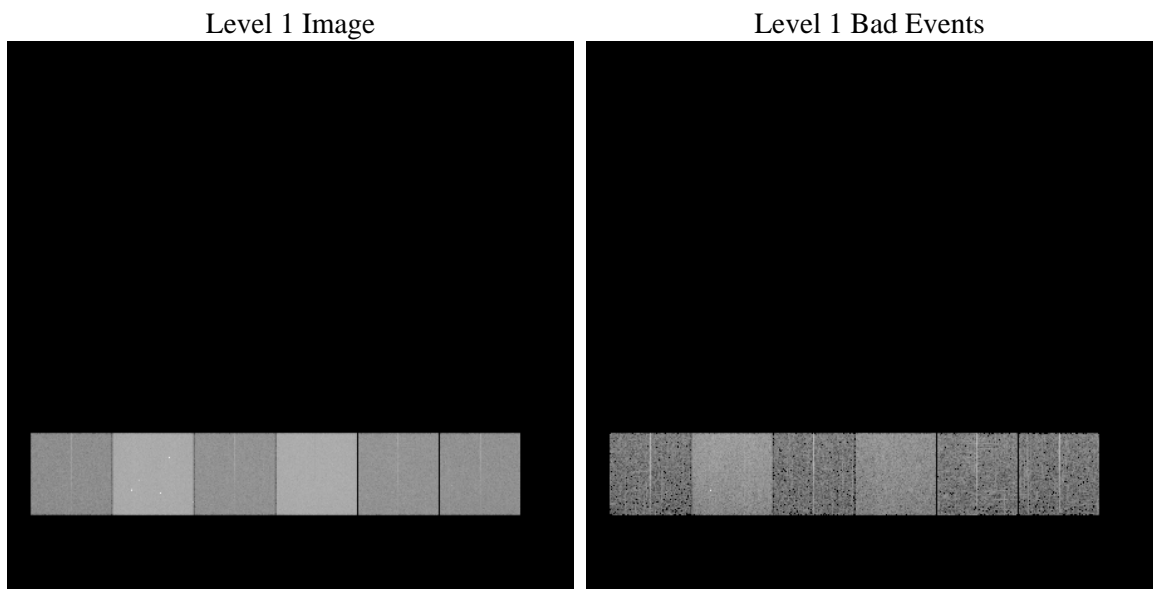
1 Front

seq_num	 	Sequence number
obs_id	61271	Observation id
title	ACIS-456789 diagnostics	Proposal title
observer	CHANDRA engineering request/realtime commanding	Principal investig
object	 	Source name
dtcycle	0	
cycle	P	events from which exps? Prim/Second/Both
ra_targ	0.0	Observer's specified target RA [deg]
dec_targ	0.0	Observer's specified target Dec [deg]
ra_nom	100.01455648966	Nominal RA [deg]
dec_nom	35.973920247758	Nominal Dec [deg]
roll_nom	261.52334569647	Nominal Roll [deg]
revision	3	Processing version of data
ontime	7245.2210942656	Sum of GTIs [s]
livetime	7153.4777422216	Livetime [s]
ontime4	2544.2140315473	Sum of GTIs [s]
ontime5	7734.5648653507	Sum of GTIs [s]
ontime6	2839.1481425315	Sum of GTIs [s]
ontime7	7245.2210942656	Sum of GTIs [s]
ontime8	2920.1741224229	Sum of GTIs [s]
ontime9	2798.6274035573	Sum of GTIs [s]
l2events	1312988	Number of level 2 events

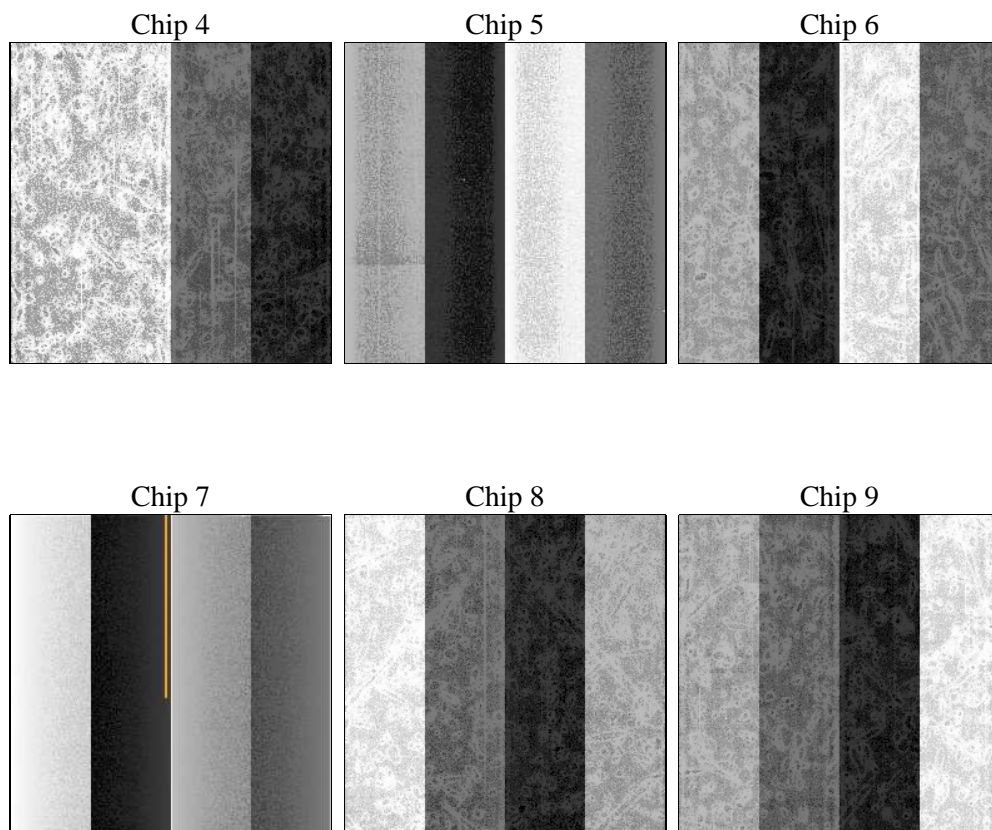
2 OBI

2.1 OBI

2.1.1 Images



2.1.2 Bias



2.1.3 Parameters

obi_num	0	Obi number	sched_exp_time	0.0	[s] Scheduled observation exposure time
ascdsver	8.4.5	Processing system revision	ontime	7245.2210942656	Sum of GTIs [s]
caldsver	4.5.2	 	ontime4	2544.2140315473	Sum of GTIs [s]
date	2012-10-03T19:20:10	Date and time of file creation	ontime5	7734.5648653507	Sum of GTIs [s]
revision	3	Processing version of data	ontime6	2839.1481425315	Sum of GTIs [s]
			ontime7	7245.2210942656	Sum of GTIs [s]
			ontime8	2920.1741224229	Sum of GTIs [s]
			ontime9	2798.6274035573	Sum of GTIs [s]
			l1events	1571389	Number of level 1 events

2.1.4 Events

	ccd 4	ccd 5	ccd 6	ccd 7	ccd 8	ccd 9		ccd 4	ccd 5	ccd 6	ccd 7	ccd 8	ccd 9
level 1 events	151945	436314	180211	443762	187700	171457	grade 0 events	73695	92328	86356	101942	89414	81973
rejected events	22433	60317	23092	44221	26401	23158		48%	21%	47%	22%	47%	47%
rejected %	14%	13%	12%	9%	14%	13%	grade 1 events	394	279	448	284	440	432
								0%	0%	0%	0%	0%	0%
							grade 2 events	23013	134893	27415	88638	28640	26476
								15%	30%	15%	19%	15%	15%
							grade 3 events	7985	24231	9838	40744	10309	9223
								5%	5%	5%	9%	5%	5%
							grade 4 events	8050	23430	9803	40554	10394	9261
								5%	5%	5%	9%	5%	5%
							grade 5 events	1398	10696	1670	8232	1844	1631
								0%	2%	0%	1%	0%	0%
							grade 6 events	17771	104169	24936	131045	23848	22611
								11%	23%	13%	29%	12%	13%
							grade 7 events	19639	46288	19745	32323	22811	19850
								12%	10%	10%	7%	12%	11%

2.2 Compared Parameters

Parameter	Planned	Actual	Parameter	Planned	Actual
Instrument	ACIS	ACIS	Obspar format version number	7	7
Detector	ACIS-456789	ACIS-456789	Obspar file type	PREDICTED	ACTUAL
Grating	NONE	NONE	Obspar update status	NONE	UPDATED
Data mode	FAINT	FAINT	On-chip summing requested	N	N
Observation mode	SECONDARY	SECONDARY	Subarray requested	NONE	NONE
[deg] Pointing RA	0	100.0145564896595	Alternating exposures requested	N	N
[deg] Pointing Dec	0	35.97392024775766	[s] Primary exposure time	0.000000	3.2
[deg] Pointing Roll	0.0	261.5233456964696			
[mm] SIM focus pos	-0.684267	-0.7809083437167272			
[mm] SIM defocus	0	0.7524282956875696			
[mm] SIM translation stage pos	-190.132523	250.466033080201			
[mm] SIM translation stage offset	0	-0.01005468664627074			
[s] Observation start time (MET)	132079740.979	132079740.21019			
Observation start date	2002-03-09T16:49:01	2002-03-09T16:49:00			
[s] Observation end time (MET)	132101050.73	132101049.96105			
Observation end date	2002-03-09T22:44:11	2002-03-09T22:44:09			
Read mode	TIMED	TIMED			

2.3 Star Slots

2.4 FID Slots

A Summary

A.1 Status

V&V Scientist	Beth Sundheim
V&V Date (YYYY-MM-DD)	2012.10.05
V&V Edition	1
V&V Disposition and Status	OK
V&V Charge Time	7.2452210942656

A.2 Comments