

V&V Reference Report

L2 ASCDS Version : 7.6.8.1

Observation 61265 - L2 Version 001
Chandra X-Ray Center

L2 Processing Date : Sep 8 2006

Contents

1	Front	2
2	OBI	3
2.1	OBI	3
2.1.1	Images	3
2.1.2	Bias	3
2.1.3	Parameters	4
2.1.4	Events	4
2.2	Compared Parameters	5
2.3	Aspect	6
2.4	Star Slots	8
2.5	FID Slots	8
A	Summary	9
A.1	Status	9
A.2	Comments	9

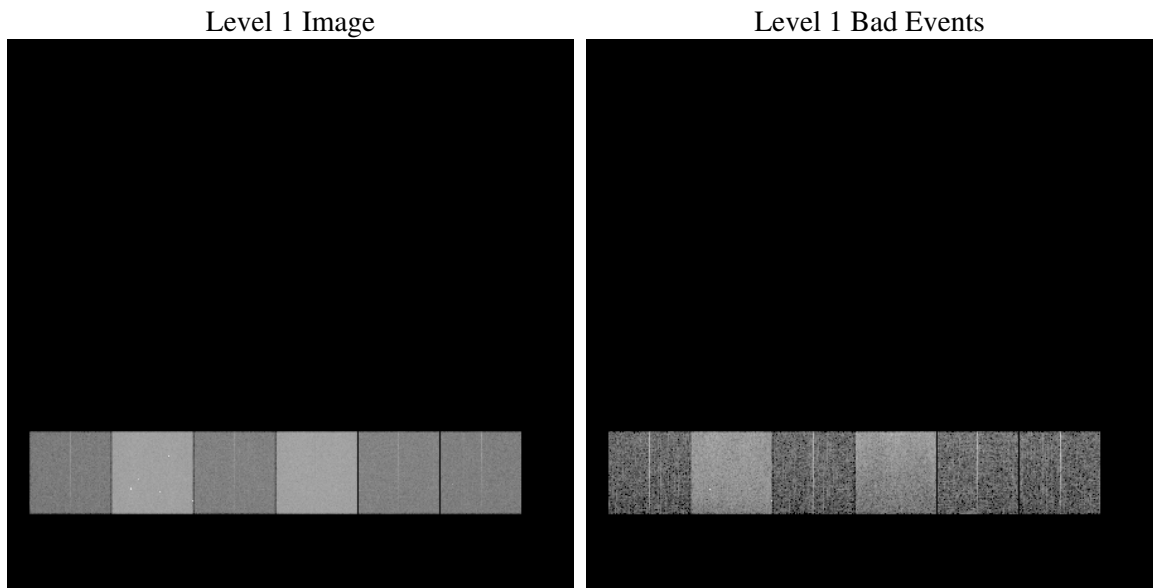
1 Front

seq_num	
obs_id	61265
title	ACIS-456789 diagnostics
observer	CHANDRA engineering request/realtime commanding
object	
dtcycle	0
cycle	P
ra_targ	0.0
dec_targ	0.0
ra_nom	218.4677661174
dec_nom	37.512877445951
roll_nom	120.49311382454
revision	2
ontime	7309.9749797136
livetime	7217.4116749819
ontime4	2591.2141262889
ontime5	7857.7384364605
ontime6	2866.6612266004
ontime7	7309.9749797136
ontime8	2931.5644652247
ontime9	2830.8866667598
l2events	1297493

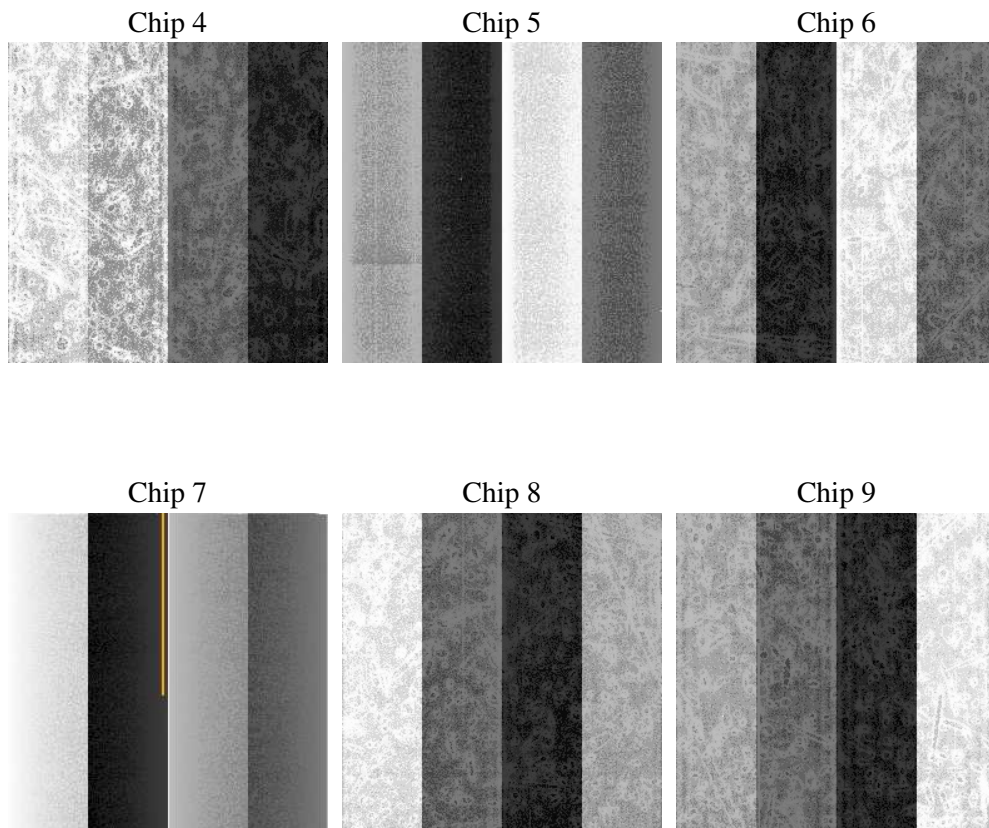
2 OBI

2.1 OBI

2.1.1 Images



2.1.2 Bias



2.1.3 Parameters

obi_num	2
ascdsver	7.6.8.1
caldsver	3.2.3
date	2006-09-08T05:17:59
revision	2

sched_exp_time	0.0
ontime	7311.7133458108
ontime4	2592.8293723911
ontime5	7859.4357625544
ontime6	2868.3175127059
ontime7	7311.7133458108
ontime8	2933.1386713237
ontime9	2832.6660728604
l1events	1570616

2.1.4 Events

	ccd 4	ccd 5	ccd 6	ccd 7	ccd 8	ccd 9
level 1 events	153674	435509	180359	442662	186473	171939
rejected events	22017	68329	22478	55412	24475	22377
rejected %	14%	15%	12%	12%	13%	13%

	ccd 4	ccd 5	ccd 6	ccd 7	ccd 8	ccd 9
grade 0 events	74268	44277	86224	70984	88809	81724
	48%	10%	47%	16%	47%	47%
grade 1 events	405	341	414	164	433	398
	0%	0%	0%	0%	0%	0%
grade 2 events	23443	176503	27495	116689	28783	26685
	15%	40%	15%	26%	15%	15%
grade 3 events	8116	11790	9657	29103	10219	9403
	5%	2%	5%	6%	5%	5%
grade 4 events	8077	11772	9717	28572	10334	9245
	5%	2%	5%	6%	5%	5%
grade 5 events	1349	7896	1629	7446	1837	1582
	0%	1%	0%	1%	0%	0%
grade 6 events	17753	122966	24974	142071	23853	22636
	11%	28%	13%	32%	12%	13%
grade 7 events	20263	59964	20249	47633	22205	20266
	13%	13%	11%	10%	11%	11%

2.2 Compared Parameters

Parameter	Planned	Actual	Parameter	Planned	Actual
Instrument	ACIS	ACIS	Obspar format version number	6	6
Detector	ACIS-456789	ACIS-456789	Obspar file type	PREDICTED	ACTUAL
Grating	NONE	NONE	Obspar update status	NONE	UPDATED
Data mode	FAINT	FAINT	On-chip summing requested	N	N
Observation mode	SECONDARY	SECONDARY	Subarray requested	NONE	NONE
Pointing RA	0	218.4677661173981	Alternating exposures requested	N	N
Pointing Dec	0	37.51287744595139	Primary exposure time	3.2	3.2
Pointing Roll	0.0	120.4931138245416			
SIM focus pos (mm)	-0.684267	-0.6828225247311905			
SIM defocus (mm)	0	0.8505141146731063			
SIM translation stage pos (mm)	-190.132523	250.466033080201			
SIM translation stage offset (mm)	0	-0.01005468664627074			
Observation start time	132531317.04693	132531316.27847			
Observation start date	2002-03-14T22:15:17	2002-03-14T22:15:16			
Observation end time	132554475.897867	132554475.12941			
Observation end date	2002-03-15T04:41:16	2002-03-15T04:41:15			
Read mode	TIMED	TIMED			

2.3 Aspect

2.4 Star Slots

2.5 FID Slots

A Summary

A.1 Status

V&V Scientist	Jen Lauer
V&V Date (YYYY-MM-DD)	2006.09.08
V&V Edition	1
V&V Disposition and Status	OK
V&V Charge Time	7.30997497

A.2 Comments