

V&V Reference Report

L2 ASCDS Version : 7.6.8.1

Observation 61253 - L2 Version 001
Chandra X-Ray Center

L2 Processing Date : Sep 8 2006

Contents

1	Front	2
2	OBI	3
2.1	OBI	3
2.1.1	Images	3
2.1.2	Bias	3
2.1.3	Parameters	4
2.1.4	Events	4
2.2	Compared Parameters	5
2.3	Aspect	6
2.4	Star Slots	8
2.5	FID Slots	8
A	Summary	9
A.1	Status	9
A.2	Comments	9

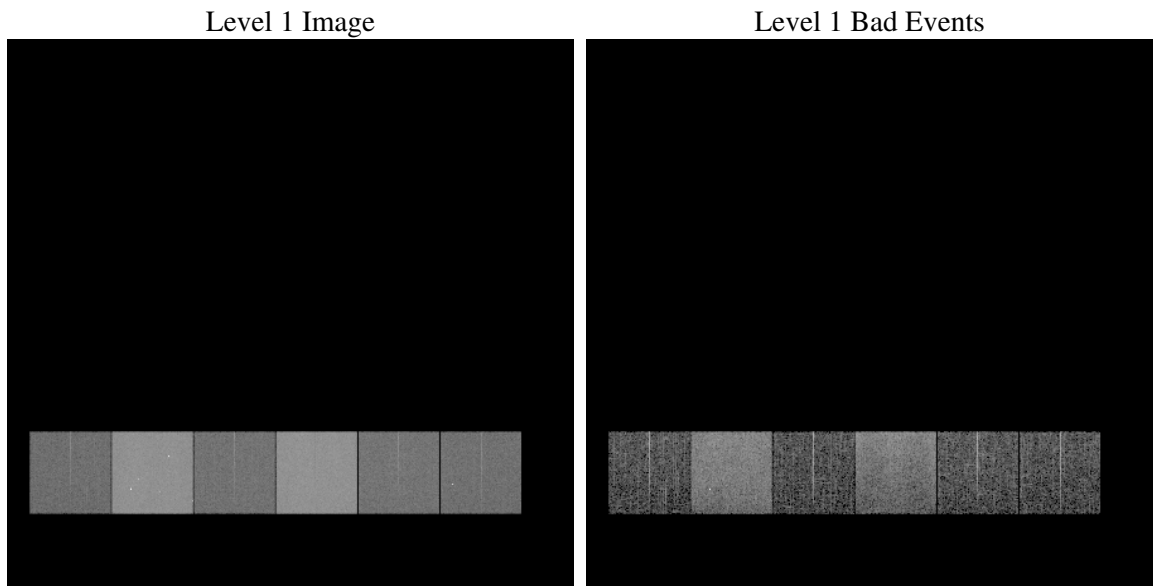
1 Front

seq_num	
obs_id	61253
title	ACIS-456789 diagnostics
observer	CHANDRA engineering request/realtime commanding
object	
dtcycle	0
cycle	P
ra_targ	0.0
dec_targ	0.0
ra_nom	134.50030478351
dec_nom	49.471341045312
roll_nom	237.59087187102
revision	2
ontime	6647.9825109839
livetime	6563.8017534954
ontime4	2536.22922194
ontime5	7122.1407000124
ontime6	2711.2033846378
ontime7	6647.9825109839
ontime8	2805.2758238316
ontime9	2646.2603120953
l2events	1208537

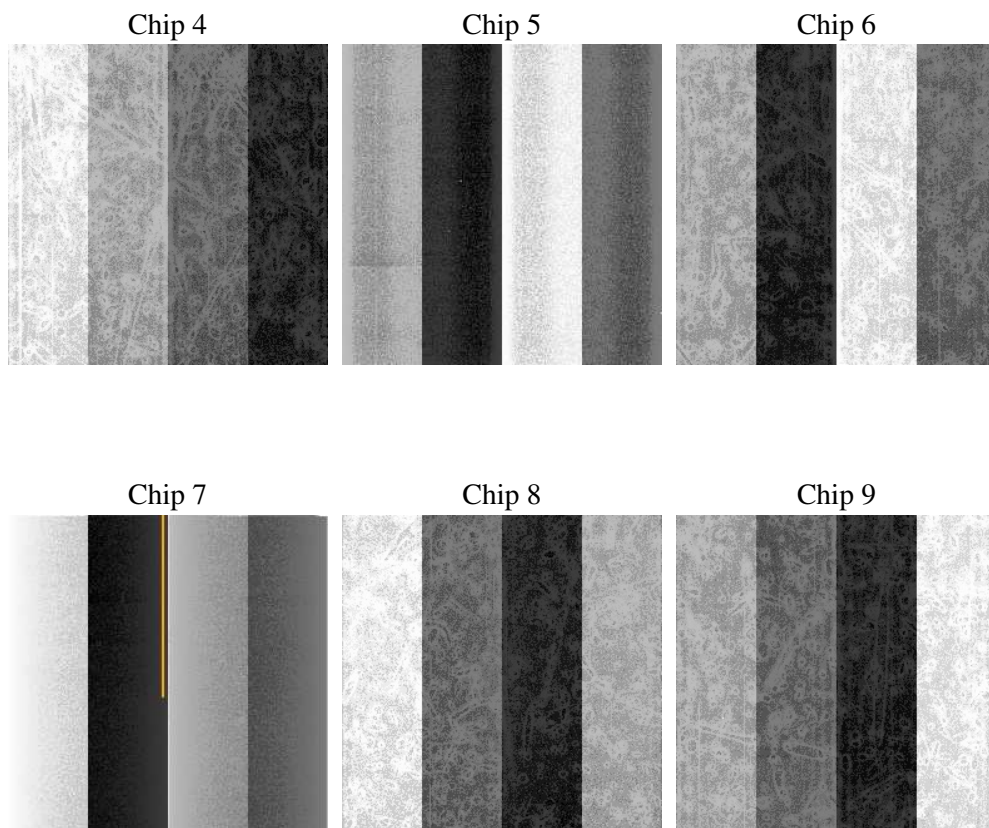
2 OBI

2.1 OBI

2.1.1 Images



2.1.2 Bias



2.1.3 Parameters

obi_num	0
ascdsver	7.6.8.1
caldsver	3.2.3
date	2006-09-08T14:47:14
revision	2

sched_exp_time	0.0
ontime	6650.5454894006
ontime4	2537.7315823138
ontime5	7123.7251403779
ontime6	2712.7467850149
ontime7	6650.5454894006
ontime8	2806.737144202
ontime9	2647.9268324673
l1events	1450795

2.1.4 Events

	ccd 4	ccd 5	ccd 6	ccd 7	ccd 8	ccd 9
level 1 events	150945	392054	169690	398946	177901	161259
rejected events	20776	57313	19418	46303	22270	20162
rejected %	13%	14%	11%	11%	12%	12%

	ccd 4	ccd 5	ccd 6	ccd 7	ccd 8	ccd 9
grade 0 events	73640	44542	81626	67358	85689	77919
	48%	11%	48%	16%	48%	48%
grade 1 events	358	574	364	154	408	396
	0%	0%	0%	0%	0%	0%
grade 2 events	23049	158422	26284	104663	27346	24798
	15%	40%	15%	26%	15%	15%
grade 3 events	7952	11997	9301	27025	9930	8698
	5%	3%	5%	6%	5%	5%
grade 4 events	7895	11586	9251	26817	9742	8637
	5%	2%	5%	6%	5%	5%
grade 5 events	1297	6438	1496	6412	1626	1401
	0%	1%	0%	1%	0%	0%
grade 6 events	17633	108194	23810	126962	22924	21220
	11%	27%	14%	31%	12%	13%
grade 7 events	19121	50301	17558	39555	20236	18190
	12%	12%	10%	9%	11%	11%

2.2 Compared Parameters

Parameter	Planned	Actual	Parameter	Planned	Actual
Instrument	ACIS	ACIS	Obspar format version number	6	6
Detector	ACIS-456789	ACIS-456789	Obspar file type	PREDICTED	ACTUAL
Grating	NONE	NONE	Obspar update status	NONE	UPDATED
Data mode	FAINT	FAINT	On-chip summing requested	N	N
Observation mode	SECONDARY	SECONDARY	Subarray requested	NONE	NONE
Pointing RA	0	134.5003047835138	Alternating exposures requested	N	N
Pointing Dec	0	49.47134104531182	Primary exposure time	0.000000	3.2
Pointing Roll	0.0	237.5908718710162			
SIM focus pos (mm)	-0.684267	-0.6828225247311905			
SIM defocus (mm)	0	0.8505141146731063			
SIM translation stage pos (mm)	-190.132523	250.466033080201			
SIM translation stage offset (mm)	0	-0.01005468664627074			
Observation start time	133643282.192	133643281.42352			
Observation start date	2002-03-27T19:08:02	2002-03-27T19:08:01			
Observation end time	133654565.392	133654564.62398			
Observation end date	2002-03-27T22:16:05	2002-03-27T22:16:04			
Read mode	TIMED	TIMED			

2.3 Aspect

2.4 Star Slots

2.5 FID Slots

A Summary

A.1 Status

V&V Scientist	Jen Lauer
V&V Date (YYYY-MM-DD)	2006.09.08
V&V Edition	1
V&V Disposition and Status	OK
V&V Charge Time	6.64798251

A.2 Comments