

V&V Reference Report

L2 ASCDS Version : 7.6.8.1

Observation 61251 - L2 Version 001
Chandra X-Ray Center

L2 Processing Date : Sep 8 2006

Contents

1	Front	2
2	OBI	3
2.1	OBI	3
2.1.1	Images	3
2.1.2	Bias	3
2.1.3	Parameters	4
2.1.4	Events	4
2.2	Compared Parameters	5
2.3	Aspect	6
2.4	Star Slots	8
2.5	FID Slots	8
A	Summary	9
A.1	Status	9
A.2	Comments	9

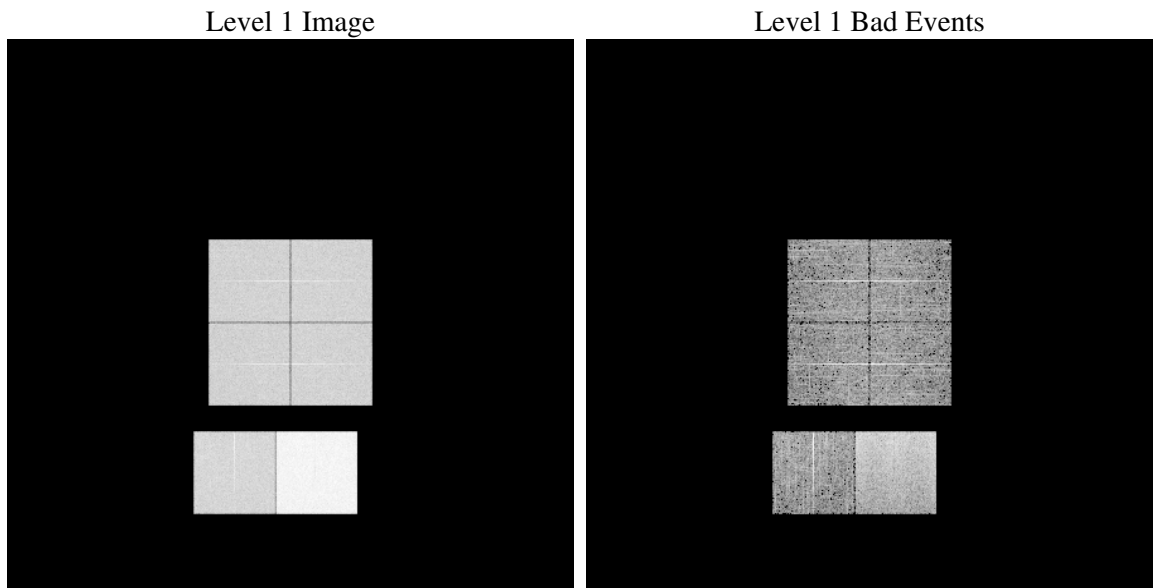
1 Front

seq_num	
obs_id	61251
title	ACIS-012367 diagnostics
observer	CHANDRA engineering request/realtime commanding
object	
dtcycle	0
cycle	P
ra_targ	0.0
dec_targ	0.0
ra_nom	126.02091486293
dec_nom	-23.0211722499
roll_nom	279.50760408663
revision	2
ontime	8463.1973578483
livetime	8356.0312569776
ontime0	3491.5788686723
ontime1	3559.6816588044
ontime2	3423.6005937159
ontime3	3485.0152666271
ontime6	3718.574001044
ontime7	8463.1973578483
l2events	1319171

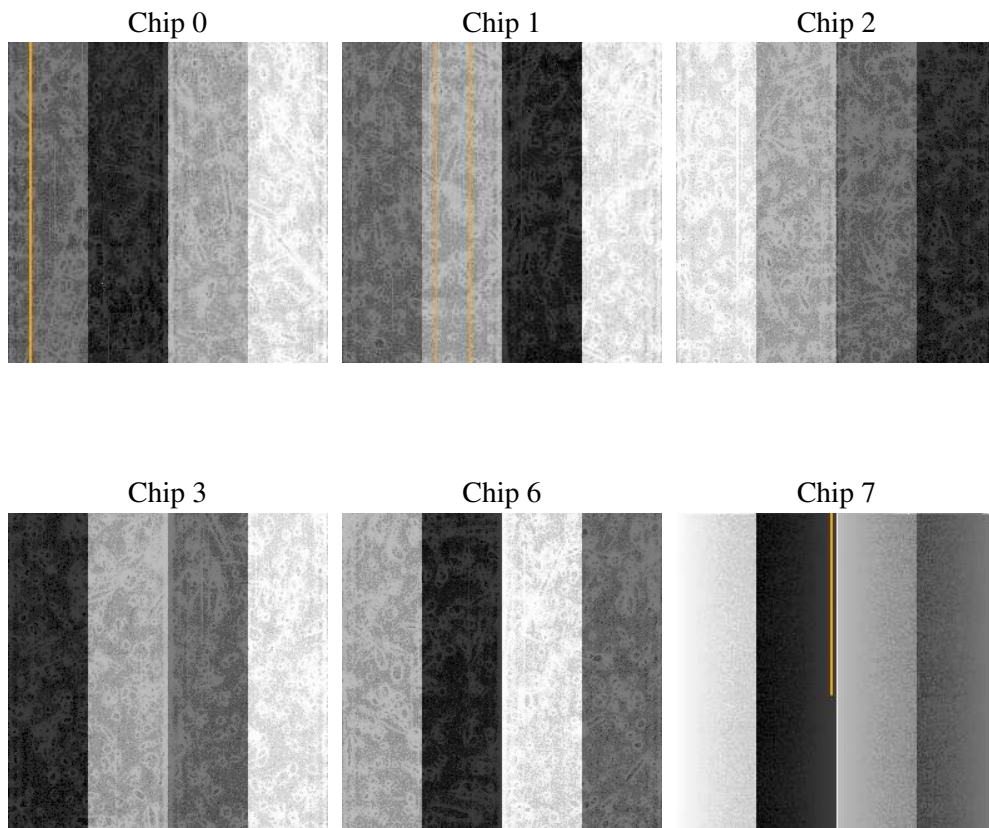
2 OBI

2.1 OBI

2.1.1 Images



2.1.2 Bias



2.1.3 Parameters

obi_num	0
ascdsver	7.6.8.1
caldbver	3.2.3
date	2006-09-08T15:05:12
revision	2

sched_exp_time	0.0
ontime	8465.494113043
ontime0	3493.8345838636
ontime1	3561.8963340074
ontime2	3425.7742289156
ontime3	3487.353061825
ontime6	3720.7065962404
ontime7	8465.494113043
l1events	1561657

2.1.4 Events

	ccd 0	ccd 1	ccd 2	ccd 3	ccd 6	ccd 7
level 1 events	206224	210184	203486	208542	231261	501960
rejected events	25172	24713	24383	25652	27638	58725
rejected %	12%	11%	11%	12%	11%	11%

	ccd 0	ccd 1	ccd 2	ccd 3	ccd 6	ccd 7
grade 0 events	99523	102250	99828	102358	111028	82164
	48%	48%	49%	49%	48%	16%
grade 1 events	471	545	508	495	521	175
	0%	0%	0%	0%	0%	0%
grade 2 events	32040	33067	31612	32118	35370	133444
	15%	15%	15%	15%	15%	26%
grade 3 events	11490	11603	11227	11613	12383	33356
	5%	5%	5%	5%	5%	6%
grade 4 events	11679	11540	11292	11532	12716	32590
	5%	5%	5%	5%	5%	6%
grade 5 events	1665	1696	1674	1730	2037	8045
	0%	0%	0%	0%	0%	1%
grade 6 events	26763	27160	25312	25544	32396	161846
	12%	12%	12%	12%	14%	32%
grade 7 events	22593	22323	22033	23152	24810	50340
	10%	10%	10%	11%	10%	10%

2.2 Compared Parameters

Parameter	Planned	Actual	Parameter	Planned	Actual
Instrument	ACIS	ACIS	Obspar format version number	6	6
Detector	ACIS-012367	ACIS-012367	Obspar file type	PREDICTED	ACTUAL
Grating	NONE	NONE	Obspar update status	NONE	UPDATED
Data mode	FAINT	FAINT	On-chip summing requested	N	N
Observation mode	SECONDARY	SECONDARY	Subarray requested	NONE	NONE
Pointing RA	0	126.0209148629325	Alternating exposures requested	N	N
Pointing Dec	0	-23.0211722499001	Primary exposure time	0.000000	3.2
Pointing Roll	0.0	279.5076040866264			
SIM focus pos (mm)	-0.782348	-0.6828225247311905			
SIM defocus (mm)	0	0.8505141146731063			
SIM translation stage pos (mm)	-233.592463	250.466033080201			
SIM translation stage offset (mm)	0	-0.01005468664627074			
Observation start time	133675272.443	133675271.67481			
Observation start date	2002-03-28T04:01:12	2002-03-28T04:01:11			
Observation end time	133696582.194	133696581.42568			
Observation end date	2002-03-28T09:56:22	2002-03-28T09:56:21			
Read mode	TIMED	TIMED			

2.3 Aspect

2.4 Star Slots

2.5 FID Slots

A Summary

A.1 Status

V&V Scientist	Beth Sundheim
V&V Date (YYYY-MM-DD)	2006.09.08
V&V Edition	1
V&V Disposition and Status	OK
V&V Charge Time	8.46319735

A.2 Comments