

# V&V Reference Report

## L2 ASCDS Version : 7.6.8.1

Observation 61244 - L2 Version 001  
Chandra X-Ray Center

L2 Processing Date : Sep 9 2006

## Contents

<b>1</b>	<b>Front</b>	<b>2</b>
<b>2</b>	<b>OBI</b>	<b>3</b>
2.1	OBI . . . . .	3
2.1.1	Images . . . . .	3
2.1.2	Bias . . . . .	3
2.1.3	Parameters . . . . .	4
2.1.4	Events . . . . .	4
2.2	Compared Parameters . . . . .	5
2.3	Aspect . . . . .	6
2.4	Star Slots . . . . .	8
2.5	FID Slots . . . . .	8
<b>A</b>	<b>Summary</b>	<b>9</b>
A.1	Status . . . . .	9
A.2	Comments . . . . .	9

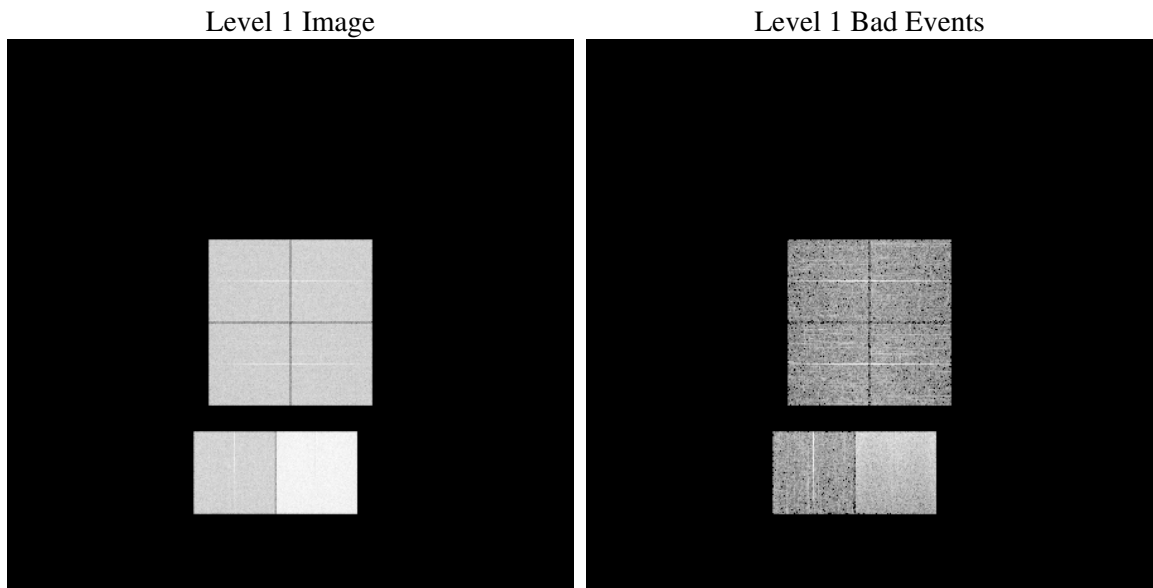
# 1 Front

seq_num	&#160
obs_id	61244
title	ACIS-012367 diagnostics
observer	CHANDRA engineering request/realtime commanding
object	&#160
dtcycle	0
cycle	P
ra_targ	0.0
dec_targ	0.0
ra_nom	275.98217363157
dec_nom	-1.9775434879768
roll_nom	95.651290535447
revision	2
ontime	7584.3420306146
livetime	7488.3045250805
ontime0	2969.2244278491
ontime1	3066.4963590205
ontime2	2865.5937164426
ontime3	2917.2860967219
ontime6	3098.9889186621
ontime7	7584.3420306146
l2events	1218127

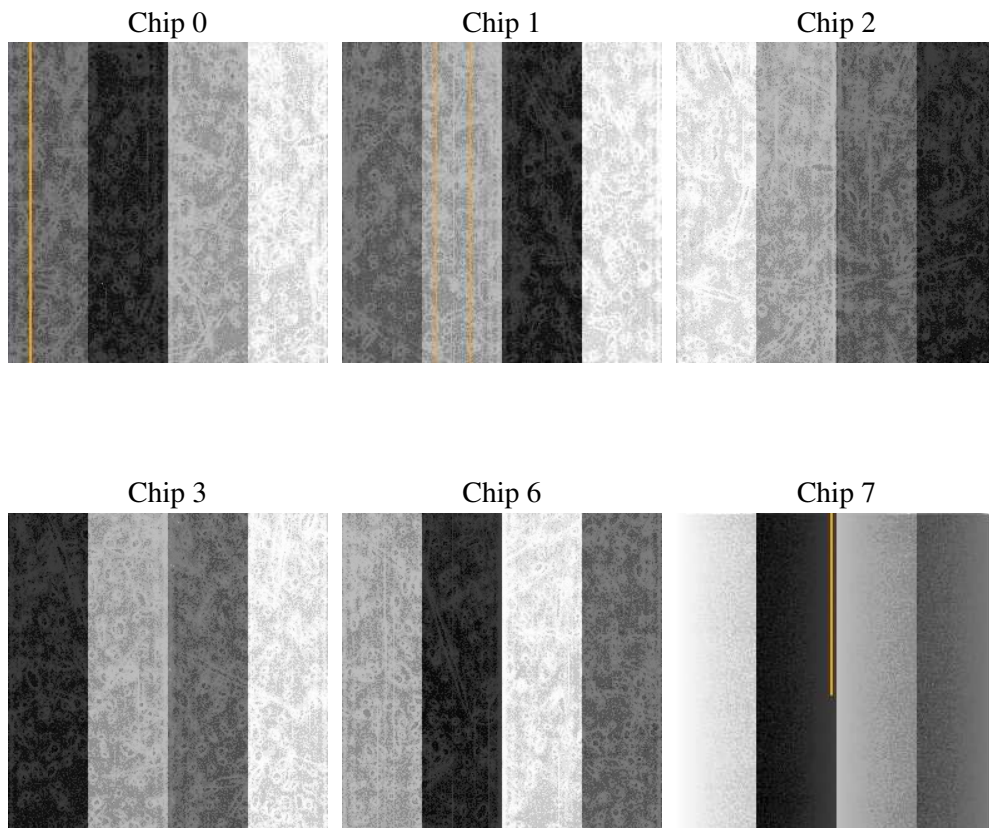
## 2 OBI

### 2.1 OBI

#### 2.1.1 Images



#### 2.1.2 Bias



### 2.1.3 Parameters

obi_num	1
ascdsver	7.6.8.1
caldsver	3.2.3
date	2006-09-09T20:13:49
revision	2

sched_exp_time	0.0
ontime	7587.1887885034
ontime0	2972.0301457345
ontime1	3069.2610369027
ontime2	2868.3173543215
ontime3	2920.173894614
ontime6	3101.6715165675
ontime7	7587.1887885034
l1events	1453011

### 2.1.4 Events

	ccd 0	ccd 1	ccd 2	ccd 3	ccd 6	ccd 7
level 1 events	189235	196311	185914	189539	208205	483807
rejected events	23412	23536	24920	25071	26560	59872
rejected %	12%	11%	13%	13%	12%	12%

	ccd 0	ccd 1	ccd 2	ccd 3	ccd 6	ccd 7
grade 0 events	90438	94356	89130	91498	97885	77729
	47%	48%	47%	48%	47%	16%
grade 1 events	493	551	483	571	512	204
	0%	0%	0%	0%	0%	0%
grade 2 events	29758	30827	28358	28880	31519	129134
	15%	15%	15%	15%	15%	26%
grade 3 events	10416	10731	10205	10098	11074	31042
	5%	5%	5%	5%	5%	6%
grade 4 events	10193	10855	9824	10272	11105	30432
	5%	5%	5%	5%	5%	6%
grade 5 events	1657	1717	1613	1678	1871	7691
	0%	0%	0%	0%	0%	1%
grade 6 events	25198	26165	23647	23873	30266	155757
	13%	13%	12%	12%	14%	32%
grade 7 events	21082	21109	22654	22669	23973	51818
	11%	10%	12%	11%	11%	10%

## 2.2 Compared Parameters

Parameter	Planned	Actual	Parameter	Planned	Actual
Instrument	ACIS	ACIS	Obspar format version number	6	6
Detector	ACIS-012367	ACIS-012367	Obspar file type	PREDICTED	ACTUAL
Grating	NONE	NONE	Obspar update status	NONE	UPDATED
Data mode	FAINT	FAINT	On-chip summing requested	N	N
Observation mode	SECONDARY	SECONDARY	Subarray requested	NONE	NONE
Pointing RA	0	275.9821736315705	Alternating exposures requested	N	N
Pointing Dec	0	-1.977543487976834	Primary exposure time	0.000000	3.2
Pointing Roll	0.0	95.65129053544651			
SIM focus pos (mm)	-0.782348	-0.7809083437167272			
SIM defocus (mm)	0	0.7524282956875696			
SIM translation stage pos (mm)	-233.592463	250.466033080201			
SIM translation stage offset (mm)	0	-0.01005468664627074			
Observation start time	134326715.576	134326714.55124			
Observation start date	2002-04-04T16:58:36	2002-04-04T16:58:34			
Observation end time	134338726.526	134338725.50173			
Observation end date	2002-04-04T20:18:47	2002-04-04T20:18:45			
Read mode	TIMED	TIMED			

## 2.3 Aspect



## **2.4 Star Slots**

## **2.5 FID Slots**



# A Summary

## A.1 Status

V&V Scientist	Jen Lauer
V&V Date (YYYY-MM-DD)	2006.09.10
V&V Edition	1
V&V Disposition and Status	OK
V&V Charge Time	7.58434203

## A.2 Comments

The ACIS focal plane temperature was above calibration limits for the last 4 ksec of the observation.