

V&V Reference Report

L2 ASCDS Version : 7.6.8.1

Observation 61242 - L2 Version 001
Chandra X-Ray Center

L2 Processing Date : Sep 9 2006

Contents

1	Front	2
2	OBI	3
2.1	OBI	3
2.1.1	Images	3
2.1.2	Bias	3
2.1.3	Parameters	4
2.1.4	Events	4
2.2	Compared Parameters	5
2.3	Aspect	6
2.4	Star Slots	8
2.5	FID Slots	8
A	Summary	9
A.1	Status	9
A.2	Comments	9

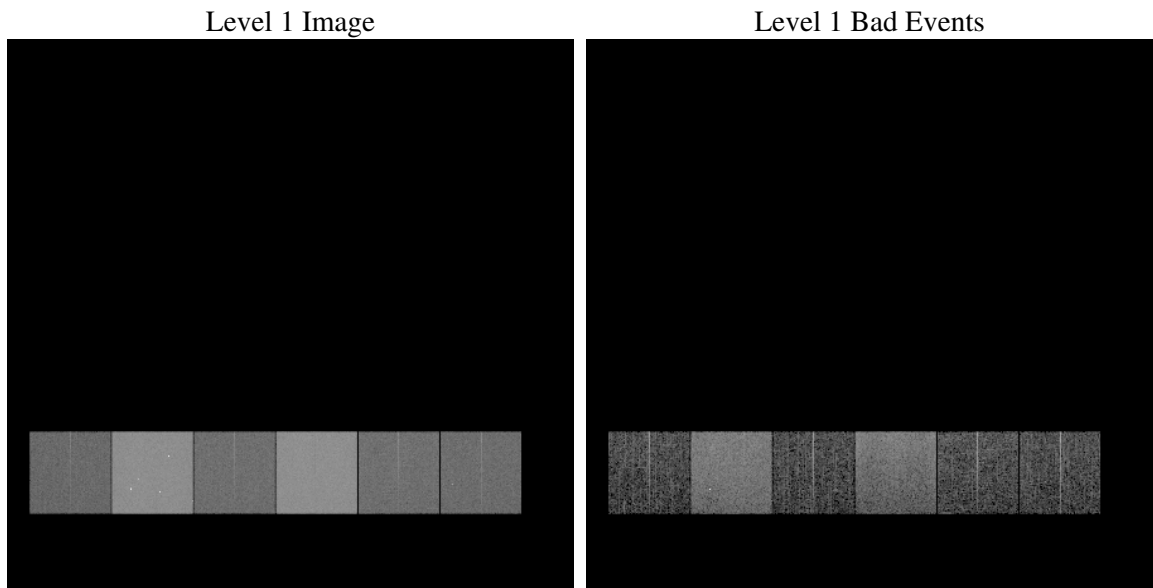
1 Front

seq_num	
obs_id	61242
title	ACIS-456789 diagnostics
observer	CHANDRA engineering request/realtime commanding
object	
dtcycle	0
cycle	P
ra_targ	0.0
dec_targ	0.0
ra_nom	247.98364711153
dec_nom	-7.976385986885
roll_nom	91.595139847179
revision	2
ontime	7333.6000687182
livetime	7240.7376088843
ontime4	2646.8309093714
ontime5	7891.045725733
ontime6	2948.205941081
ontime7	7333.6000687182
ontime8	2977.7137305439
ontime9	2870.2984391451
l2events	1292389

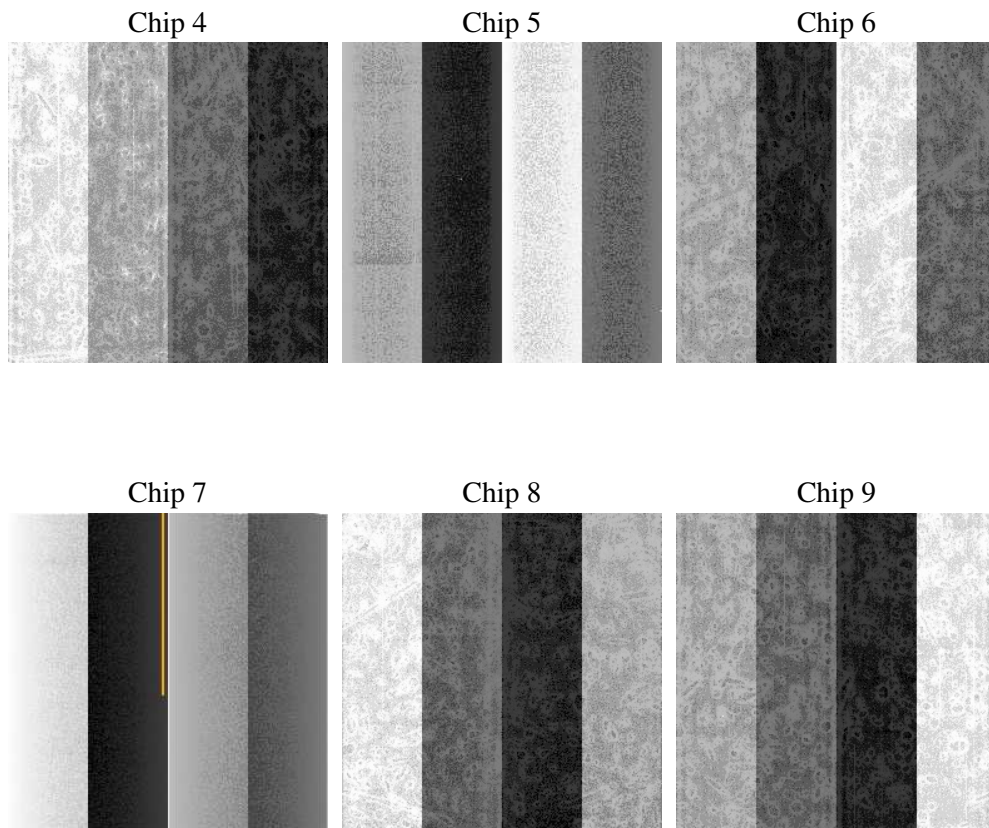
2 OBI

2.1 OBI

2.1.1 Images



2.1.2 Bias



2.1.3 Parameters

obi_num	1
ascdsver	7.6.8.1
caldsver	3.2.3
date	2006-09-09T20:12:44
revision	2

sched_exp_time	0.0
ontime	7379.7730629444
ontime4	2664.1322821379
ontime5	7943.7006504834
ontime6	2965.5483538508
ontime7	7379.7730629444
ontime8	2997.9588033557
ontime9	2887.7639719248
l1events	1570162

2.1.4 Events

	ccd 4	ccd 5	ccd 6	ccd 7	ccd 8	ccd 9
level 1 events	155952	432292	182266	439051	187263	173338
rejected events	22601	68349	22397	56130	25039	23629
rejected %	14%	15%	12%	12%	13%	13%

	ccd 4	ccd 5	ccd 6	ccd 7	ccd 8	ccd 9
grade 0 events	76118	47015	87736	70780	89479	82588
	48%	10%	48%	16%	47%	47%
grade 1 events	381	149	430	159	414	445
	0%	0%	0%	0%	0%	0%
grade 2 events	23611	173939	27733	115839	28829	26611
	15%	40%	15%	26%	15%	15%
grade 3 events	8315	12204	9906	29209	10382	9321
	5%	2%	5%	6%	5%	5%
grade 4 events	8150	12169	10016	28308	10532	9336
	5%	2%	5%	6%	5%	5%
grade 5 events	1292	7565	1670	7312	1778	1723
	0%	1%	0%	1%	0%	0%
grade 6 events	17937	120888	25348	141220	24046	22725
	11%	27%	13%	32%	12%	13%
grade 7 events	20148	58363	19427	46224	21803	20589
	12%	13%	10%	10%	11%	11%

2.2 Compared Parameters

Parameter	Planned	Actual	Parameter	Planned	Actual
Instrument	ACIS	ACIS	Obspar format version number	6	6
Detector	ACIS-456789	ACIS-456789	Obspar file type	PREDICTED	ACTUAL
Grating	NONE	NONE	Obspar update status	NONE	UPDATED
Data mode	FAINT	FAINT	On-chip summing requested	N	N
Observation mode	SECONDARY	SECONDARY	Subarray requested	NONE	NONE
Pointing RA	0	247.9836471115331	Alternating exposures requested	N	N
Pointing Dec	0	-7.976385986885047	Primary exposure time	0.000000	3.2
Pointing Roll	0.0	91.59513984717947			
SIM focus pos (mm)	-0.684267	-0.7809083437167272			
SIM defocus (mm)	0	0.7524282956875696			
SIM translation stage pos (mm)	-190.132523	250.466033080201			
SIM translation stage offset (mm)	0	-0.01005468664627074			
Observation start time	134360026.027	134360025.0026			
Observation start date	2002-04-05T02:13:46	2002-04-05T02:13:45			
Observation end time	134381335.778	134381334.75346			
Observation end date	2002-04-05T08:08:56	2002-04-05T08:08:54			
Read mode	TIMED	TIMED			

2.3 Aspect

2.4 Star Slots

2.5 FID Slots

A Summary

A.1 Status

V&V Scientist	Jen Lauer
V&V Date (YYYY-MM-DD)	2006.09.10
V&V Edition	1
V&V Disposition and Status	OK
V&V Charge Time	7.33360006

A.2 Comments