

V&V Reference Report

L2 ASCDS Version : 8.4.5

Observation 61239 - L2 Version 3
Chandra X-Ray Center

L2 Processing Date : Oct 4 2012

Contents

1	Front	2
2	OBI	3
2.1	OBI	3
2.1.1	Images	3
2.1.2	Bias	3
2.1.3	Parameters	4
2.1.4	Events	4
2.2	Compared Parameters	5
2.3	Star Slots	6
2.4	FID Slots	6
A	Summary	7
A.1	Status	7
A.2	Comments	7

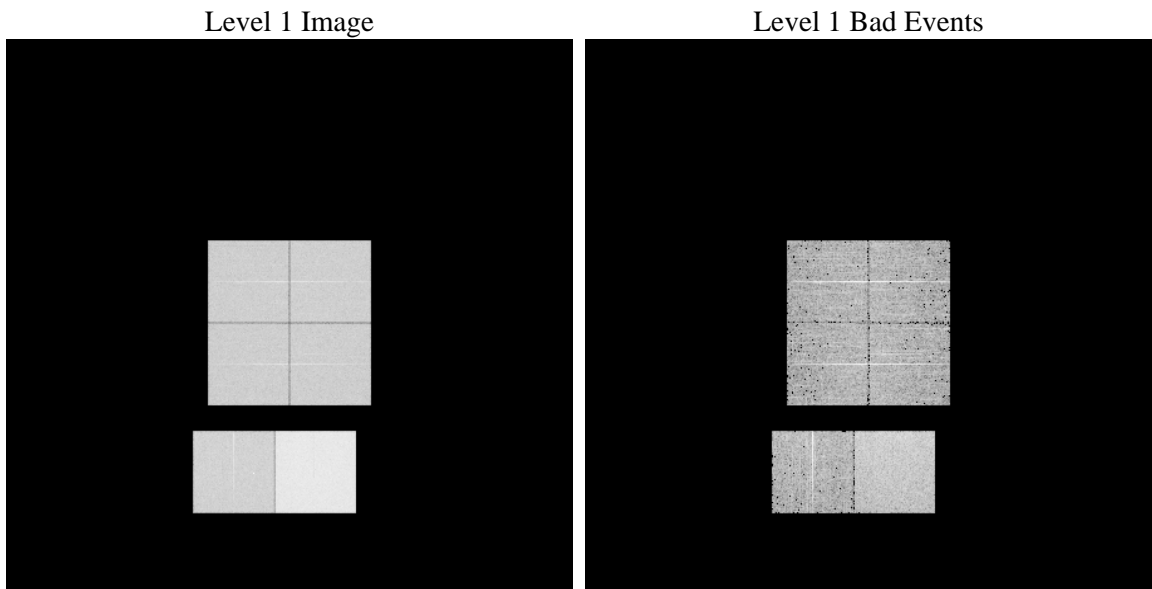
1 Front

seq_num	 	Sequence number
obs_id	61239	Observation id
title	ACIS-012367 diagnostics	Proposal title
observer	CHANDRA engineering request/realtime commanding	Principal investig
object	 	Source name
dtycle	0	
cycle	P	events from which exps? Prim/Second/Both
ra_targ	0.0	Observer's specified target RA [deg]
dec_targ	0.0	Observer's specified target Dec [deg]
ra_nom	165.03282346338	Nominal RA [deg]
dec_nom	-35.010001419609	Nominal Dec [deg]
roll_nom	306.94121161136	Nominal Roll [deg]
revision	3	Processing version of data
ontime	8351.9999688864	Sum of GTIs [s]
livetime	8246.2419163097	Livetime [s]
ontime0	3448.2300961912	Sum of GTIs [s]
ontime1	3561.8343535066	Sum of GTIs [s]
ontime2	3354.4091190696	Sum of GTIs [s]
ontime3	3360.8911595941	Sum of GTIs [s]
ontime6	3743.2856144309	Sum of GTIs [s]
ontime7	8351.9999688864	Sum of GTIs [s]
l2events	1306206	Number of level 2 events

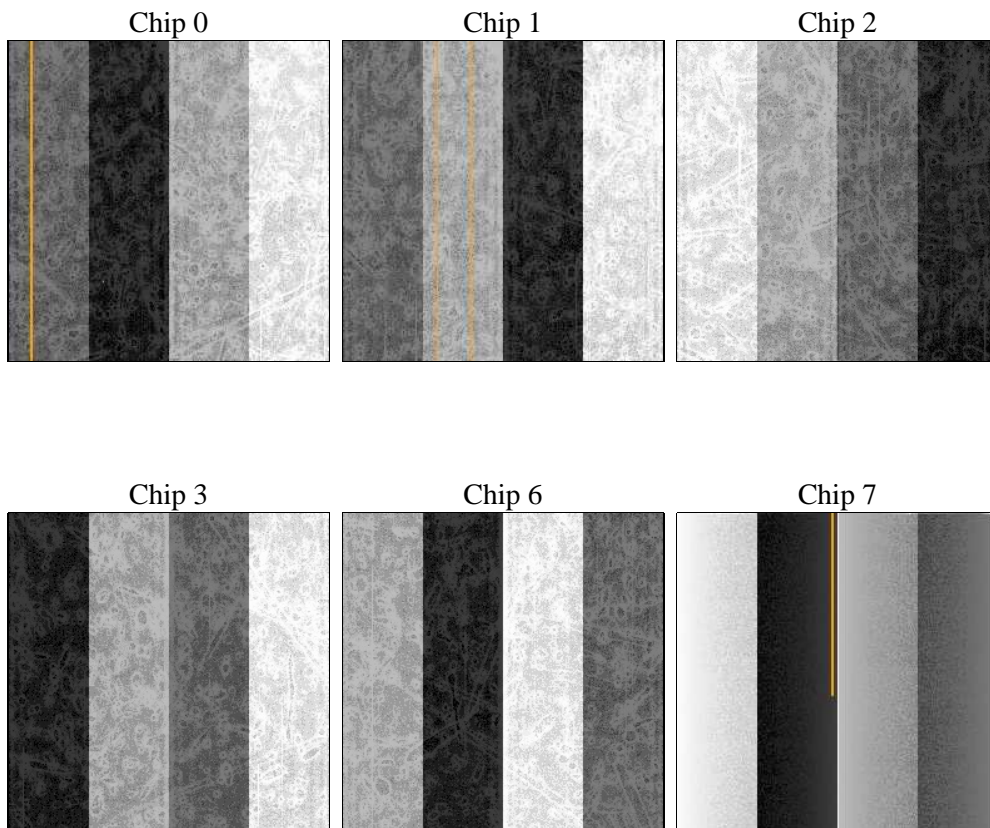
2 OBI

2.1 OBI

2.1.1 Images



2.1.2 Bias



2.1.3 Parameters

obi_num	1	Obi number	sched_exp_time	0.0	[s] Scheduled observation exposure time
ascdsver	8.4.5	Processing system revision	ontime	8351.9999688864	Sum of GTIs [s]
caldsver	4.5.2	 	ontime0	3448.2300961912	Sum of GTIs [s]
date	2012-10-05T01:23:27	Date and time of file creation	ontime1	3561.8343535066	Sum of GTIs [s]
revision	3	Processing version of data	ontime2	3354.4091190696	Sum of GTIs [s]
			ontime3	3360.8911595941	Sum of GTIs [s]
			ontime6	3743.2856144309	Sum of GTIs [s]
			ontime7	8351.9999688864	Sum of GTIs [s]
			l1events	1561275	Number of level 1 events

2.1.4 Events

	ccd 0	ccd 1	ccd 2	ccd 3	ccd 6	ccd 7		ccd 0	ccd 1	ccd 2	ccd 3	ccd 6	ccd 7
level 1 events	205626	211396	202830	204287	234723	502413	grade 0 events	98886	102371	98168	98788	112131	113935
rejected events	28423	28327	28260	29491	31487	53523		48%	48%	48%	48%	47%	22%
rejected %	13%	13%	13%	14%	13%	10%	grade 1 events	514	485	517	504	535	322
								0%	0%	0%	0%	0%	0%
							grade 2 events	32061	32865	31284	31232	35613	100575
								15%	15%	15%	15%	15%	20%
							grade 3 events	11378	11534	10873	11144	12560	46205
								5%	5%	5%	5%	5%	9%
							grade 4 events	11322	11606	11204	11090	12778	45565
								5%	5%	5%	5%	5%	9%
							grade 5 events	1795	1899	1725	1816	2085	9327
								0%	0%	0%	0%	0%	1%
							grade 6 events	26263	27220	25294	24850	32770	148628
								12%	12%	12%	12%	13%	29%
							grade 7 events	23407	23416	23765	24863	26251	37856
								11%	11%	11%	12%	11%	7%

2.2 Compared Parameters

Parameter	Planned	Actual	Parameter	Planned	Actual
Instrument	ACIS	ACIS	Obspar format version number	7	7
Detector	ACIS-012367	ACIS-012367	Obspar file type	PREDICTED	ACTUAL
Grating	NONE	NONE	Obspar update status	NONE	UPDATED
Data mode	FAINT	FAINT	On-chip summing requested	N	N
Observation mode	SECONDARY	SECONDARY	Subarray requested	NONE	NONE
[deg] Pointing RA	0	165.03282346338	Alternating exposures requested	N	N
[deg] Pointing Dec	0	-35.01000141960925	[s] Primary exposure time	3.2	3.2
[deg] Pointing Roll	0.0	306.9412116113579			
[mm] SIM focus pos	-0.782348	-0.6828225247311905			
[mm] SIM defocus	0	0.8505141146731063			
[mm] SIM translation stage pos	-233.592463	250.466033080201			
[mm] SIM translation stage offset	0	-0.01005468664627074			
[s] Observation start time (MET)	134591081.536704	134591080.51197			
Observation start date	2002-04-07T18:24:42	2002-04-07T18:24:40			
[s] Observation end time (MET)	134612391.28757	134612390.26284			
Observation end date	2002-04-08T00:19:51	2002-04-08T00:19:50			
Read mode	TIMED	TIMED			

2.3 Star Slots

2.4 FID Slots

A Summary

A.1 Status

V&V Scientist	Beth Sundheim
V&V Date (YYYY-MM-DD)	2012.10.10
V&V Edition	1
V&V Disposition and Status	OK
V&V Charge Time	8.3519999688864

A.2 Comments