

# V&V Reference Report

## L2 ASCDS Version : 7.6.8.1

Observation 61236 - L2 Version 001  
Chandra X-Ray Center

L2 Processing Date : Sep 9 2006

## Contents

<b>1</b>	<b>Front</b>	<b>2</b>
<b>2</b>	<b>OBI</b>	<b>3</b>
2.1	OBI . . . . .	3
2.1.1	Images . . . . .	3
2.1.2	Bias . . . . .	3
2.1.3	Parameters . . . . .	4
2.1.4	Events . . . . .	4
2.2	Compared Parameters . . . . .	5
2.3	Aspect . . . . .	6
2.4	Star Slots . . . . .	8
2.5	FID Slots . . . . .	8
<b>A</b>	<b>Summary</b>	<b>9</b>
A.1	Status . . . . .	9
A.2	Comments . . . . .	9

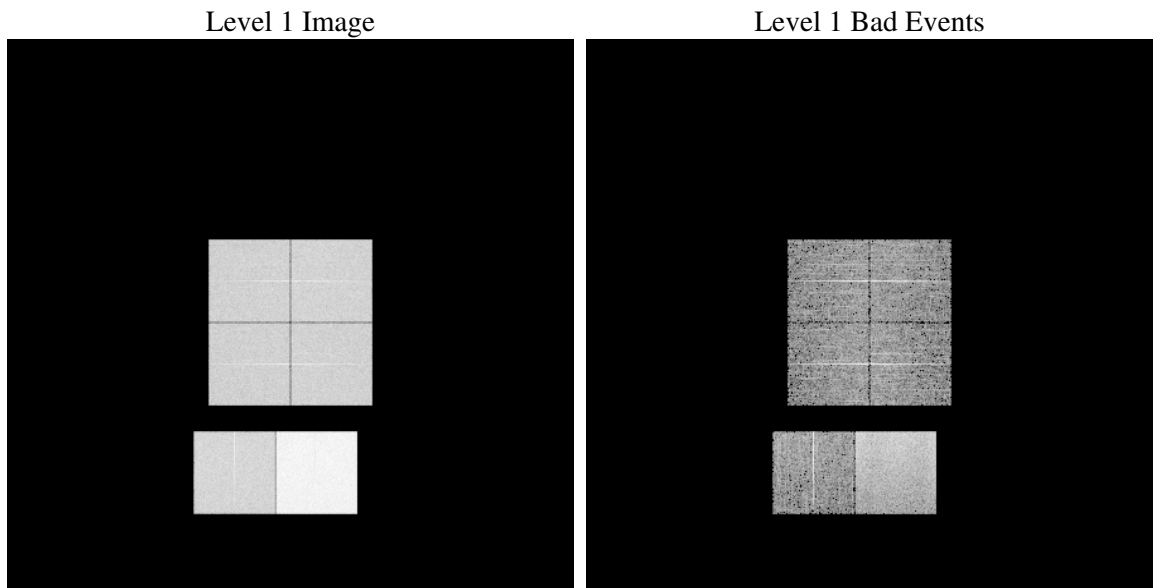
# 1 Front

seq_num	&#160
obs_id	61236
title	ACIS-012367 diagnostics
observer	CHANDRA engineering request/realtime commanding
object	&#160
dtcycle	0
cycle	P
ra_targ	0.0
dec_targ	0.0
ra_nom	251.73150619776
dec_nom	-3.4781406087452
roll_nom	97.389769942835
revision	2
ontime	8463.326497525
livetime	8356.1587614099
ontime0	3507.9115244448
ontime1	3657.0394277871
ontime2	3384.8341843784
ontime3	3446.2495652735
ontime6	3760.833024025
ontime7	8463.326497525
l2events	1313346

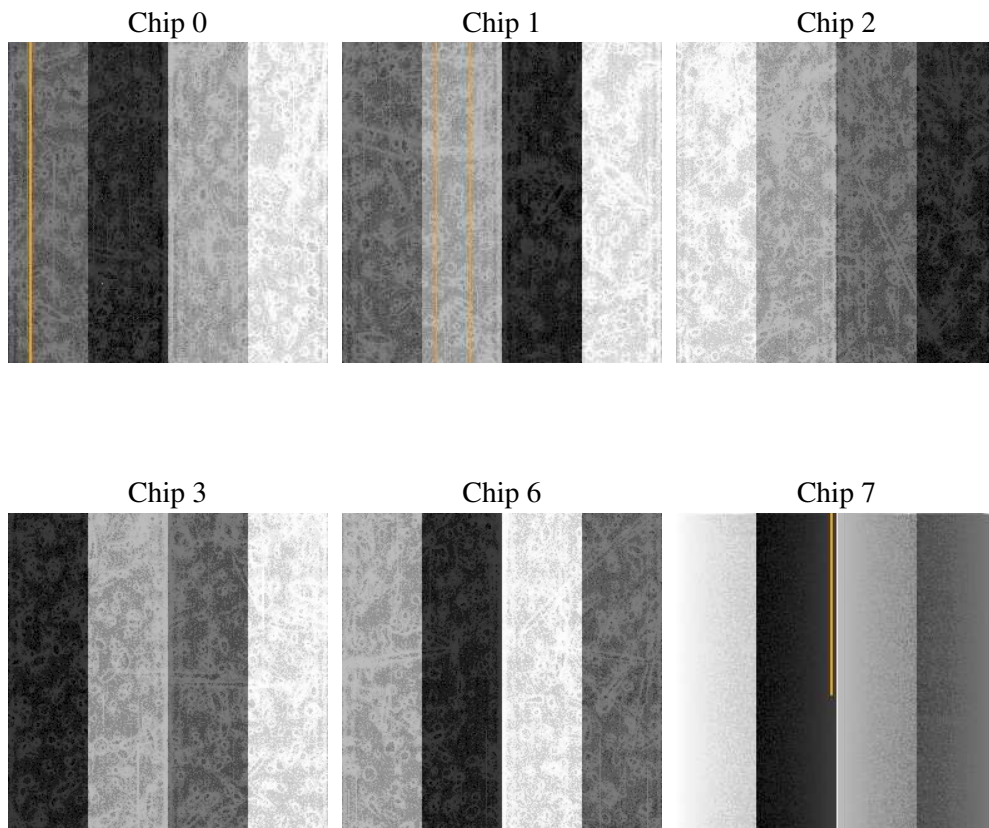
## 2 OBI

### 2.1 OBI

#### 2.1.1 Images



#### 2.1.2 Bias



### 2.1.3 Parameters

obi_num	2
ascdsver	7.6.8.1
caldsver	3.2.3
date	2006-09-09T21:31:37
revision	2

sched_exp_time	0.0
ontime	8465.4967638254
ontime0	3510.040750742
ontime1	3659.1276140809
ontime2	3386.8813306689
ontime3	3448.4608715773
ontime6	3762.839130342
ontime7	8465.4967638254
l1events	1561381

### 2.1.4 Events

	ccd 0	ccd 1	ccd 2	ccd 3	ccd 6	ccd 7
level 1 events	205785	213696	202364	206203	231862	501471
rejected events	25386	25454	25631	25912	28134	60914
rejected %	12%	11%	12%	12%	12%	12%

	ccd 0	ccd 1	ccd 2	ccd 3	ccd 6	ccd 7
grade 0 events	99816	103458	98294	100379	111287	81961
	48%	48%	48%	48%	47%	16%
grade 1 events	532	532	513	489	553	206
	0%	0%	0%	0%	0%	0%
grade 2 events	31672	33594	31221	31853	35194	131278
	15%	15%	15%	15%	15%	26%
grade 3 events	11438	12084	11069	11354	12665	33747
	5%	5%	5%	5%	5%	6%
grade 4 events	11395	12083	11123	11505	12529	32650
	5%	5%	5%	5%	5%	6%
grade 5 events	1763	1805	1625	1819	2135	8318
	0%	0%	0%	0%	0%	1%
grade 6 events	26218	27194	25192	25366	32227	161081
	12%	12%	12%	12%	13%	32%
grade 7 events	22951	22946	23327	23438	25272	52230
	11%	10%	11%	11%	10%	10%

## 2.2 Compared Parameters

Parameter	Planned	Actual	Parameter	Planned	Actual
Instrument	ACIS	ACIS	Obspar format version number	6	6
Detector	ACIS-012367	ACIS-012367	Obspar file type	PREDICTED	ACTUAL
Grating	NONE	NONE	Obspar update status	NONE	UPDATED
Data mode	FAINT	FAINT	On-chip summing requested	N	N
Observation mode	SECONDARY	SECONDARY	Subarray requested	NONE	NONE
Pointing RA	0	251.731506197761	Alternating exposures requested	N	N
Pointing Dec	0	-3.478140608745162	Primary exposure time	0.000000	3.2
Pointing Roll	0.0	97.38976994283526			
SIM focus pos (mm)	-0.782348	-0.6828225247311905			
SIM defocus (mm)	0	0.8505141146731063			
SIM translation stage pos (mm)	-233.592463	250.466033080201			
SIM translation stage offset (mm)	0	-0.01005468664627074			
Observation start time	134819059.996	134819058.97123			
Observation start date	2002-04-10T09:44:20	2002-04-10T09:44:18			
Observation end time	134842331.597	134842330.57218			
Observation end date	2002-04-10T16:12:12	2002-04-10T16:12:10			
Read mode	TIMED	TIMED			

## 2.3 Aspect



## 2.4 Star Slots

## 2.5 FID Slots



## A Summary

### A.1 Status

V&V Scientist	Jen Lauer
V&V Date (YYYY-MM-DD)	2006.09.10
V&V Edition	1
V&V Disposition and Status	OK
V&V Charge Time	8.46332649

### A.2 Comments