

# V&V Reference Report

## L2 ASCDS Version : 7.6.9

Observation 61222 - L2 Version 001  
Chandra X-Ray Center

L2 Processing Date : Sep 15 2006

## Contents

<b>1</b>	<b>Front</b>	<b>2</b>
<b>2</b>	<b>OBI</b>	<b>3</b>
2.1	OBI . . . . .	3
2.1.1	Images . . . . .	3
2.1.2	Bias . . . . .	3
2.1.3	Parameters . . . . .	4
2.1.4	Events . . . . .	4
2.2	Compared Parameters . . . . .	5
2.3	Aspect . . . . .	6
2.4	Star Slots . . . . .	8
2.5	FID Slots . . . . .	8
<b>A</b>	<b>Summary</b>	<b>9</b>
A.1	Status . . . . .	9
A.2	Comments . . . . .	9

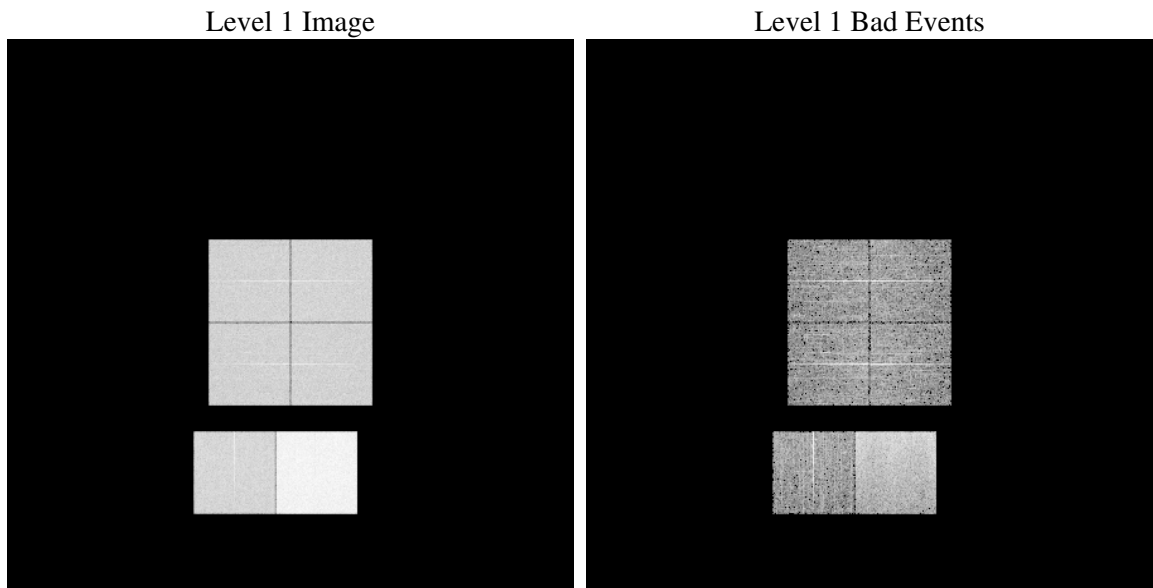
# 1 Front

seq_num	&#160
obs_id	61222
title	ACIS-012367 diagnostics
observer	CHANDRA engineering request/realtime commanding
object	&#160
dtcycle	0
cycle	P
ra_targ	0.0
dec_targ	0.0
ra_nom	235.50502790583
dec_nom	-34.471674941882
roll_nom	48.844887795989
revision	2
ontime	8462.7005812228
livetime	8355.5407708368
ontime0	3643.4079815745
ontime1	3734.1972050667
ontime2	3494.4030392468
ontime3	3542.8541798294
ontime6	3782.8946754336
ontime7	8462.7005812228
l2events	1316813

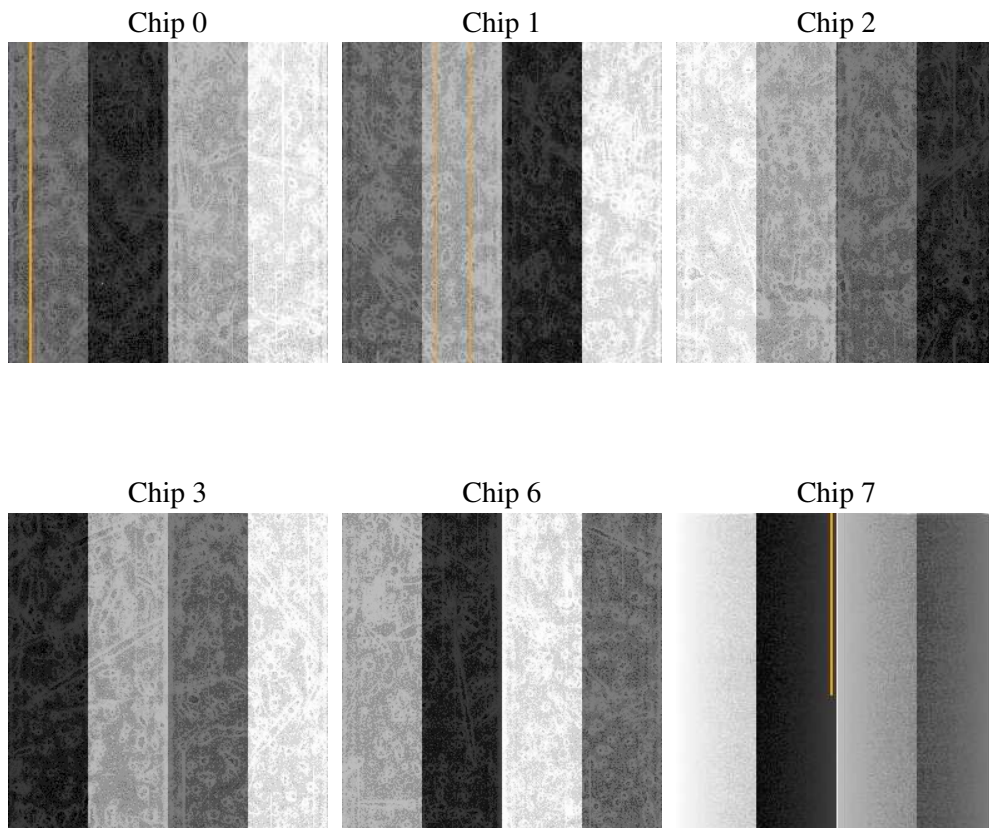
## 2 OBI

### 2.1 OBI

#### 2.1.1 Images



#### 2.1.2 Bias



### 2.1.3 Parameters

obi_num	1
ascdsver	7.6.9
caldbver	3.2.3
date	2006-09-15T05:13:08
revision	2

sched_exp_time	0.0
ontime	8465.4966947734
ontime0	3646.1630551219
ontime1	3736.9112386107
ontime2	3497.0760327876
ontime3	3545.6913333833
ontime6	3785.5266290009
ontime7	8465.4966947734
l1events	1561191

### 2.1.4 Events

	ccd 0	ccd 1	ccd 2	ccd 3	ccd 6	ccd 7
level 1 events	209368	215468	205517	208300	230792	491746
rejected events	24379	24764	25531	25683	27511	58936
rejected %	11%	11%	12%	12%	11%	11%

	ccd 0	ccd 1	ccd 2	ccd 3	ccd 6	ccd 7
grade 0 events	101860	105085	99968	102402	110711	79337
	48%	48%	48%	49%	47%	16%
grade 1 events	511	512	490	517	542	192
	0%	0%	0%	0%	0%	0%
grade 2 events	32963	33566	31739	31692	35429	130632
	15%	15%	15%	15%	15%	26%
grade 3 events	11571	12192	11164	11578	12501	32527
	5%	5%	5%	5%	5%	6%
grade 4 events	11752	12164	11273	11528	12524	31882
	5%	5%	5%	5%	5%	6%
grade 5 events	1704	1789	1662	1835	1920	8114
	0%	0%	0%	0%	0%	1%
grade 6 events	27007	27895	25988	25585	32314	158582
	12%	12%	12%	12%	14%	32%
grade 7 events	22000	22265	23233	23163	24851	50480
	10%	10%	11%	11%	10%	10%

## 2.2 Compared Parameters

Parameter	Planned	Actual	Parameter	Planned	Actual
Instrument	ACIS	ACIS	Obspar format version number	6	6
Detector	ACIS-012367	ACIS-012367	Obspar file type	PREDICTED	ACTUAL
Grating	NONE	NONE	Obspar update status	NONE	UPDATED
Data mode	FAINT	FAINT	On-chip summing requested	N	N
Observation mode	SECONDARY	SECONDARY	Subarray requested	NONE	NONE
Pointing RA	0	235.5050279058327	Alternating exposures requested	N	N
Pointing Dec	0	-34.4716749418819	Primary exposure time	0.000000	3.2
Pointing Roll	0.0	48.84488779598866			
SIM focus pos (mm)	-0.782348	-0.6828225247311905			
SIM defocus (mm)	0	0.8505141146731063			
SIM translation stage pos (mm)	-233.592463	250.466033080201			
SIM translation stage offset (mm)	0	-0.01005468664627074			
Observation start time	136190795.002	136190793.97703			
Observation start date	2002-04-26T06:46:35	2002-04-26T06:46:33			
Observation end time	136212104.753	136212103.7279			
Observation end date	2002-04-26T12:41:45	2002-04-26T12:41:43			
Read mode	TIMED	TIMED			

## 2.3 Aspect



## **2.4 Star Slots**

## **2.5 FID Slots**



## A Summary

### A.1 Status

V&V Scientist	Doug Morgan
V&V Date (YYYY-MM-DD)	2006.09.15
V&V Edition	1
V&V Disposition and Status	OK
V&V Charge Time	8.46270058

### A.2 Comments