

V&V Reference Report

L2 ASCDS Version : 7.6.9

Observation 61220 - L2 Version 001
Chandra X-Ray Center

L2 Processing Date : Sep 15 2006

Contents

1	Front	2
2	OBI	3
2.1	OBI	3
2.1.1	Images	3
2.1.2	Bias	3
2.1.3	Parameters	4
2.1.4	Events	4
2.2	Compared Parameters	5
2.3	Aspect	6
2.4	Star Slots	8
2.5	FID Slots	8
A	Summary	9
A.1	Status	9
A.2	Comments	9

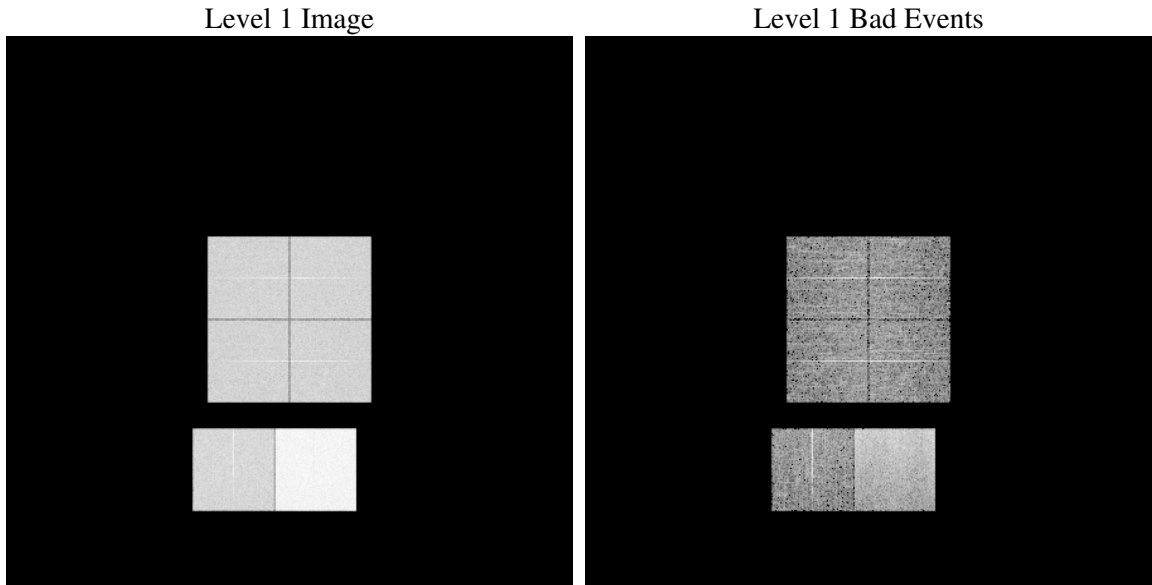
1 Front

seq_num	
obs_id	61220
title	ACIS-012367 diagnostics
observer	CHANDRA engineering request/realtime commanding
object	
dtcycle	0
cycle	P
ra_targ	0.0
dec_targ	0.0
ra_nom	83.05195947043
dec_nom	59.987989275356
roll_nom	302.36488449188
revision	2
ontime	8463.9999684691
livetime	8356.8237044595
ontime0	3605.7863571942
ontime1	3665.1763471365
ontime2	3506.4085009992
ontime3	3515.9665236771
ontime6	3835.8975249231
ontime7	8463.9999684691
l2events	1313756

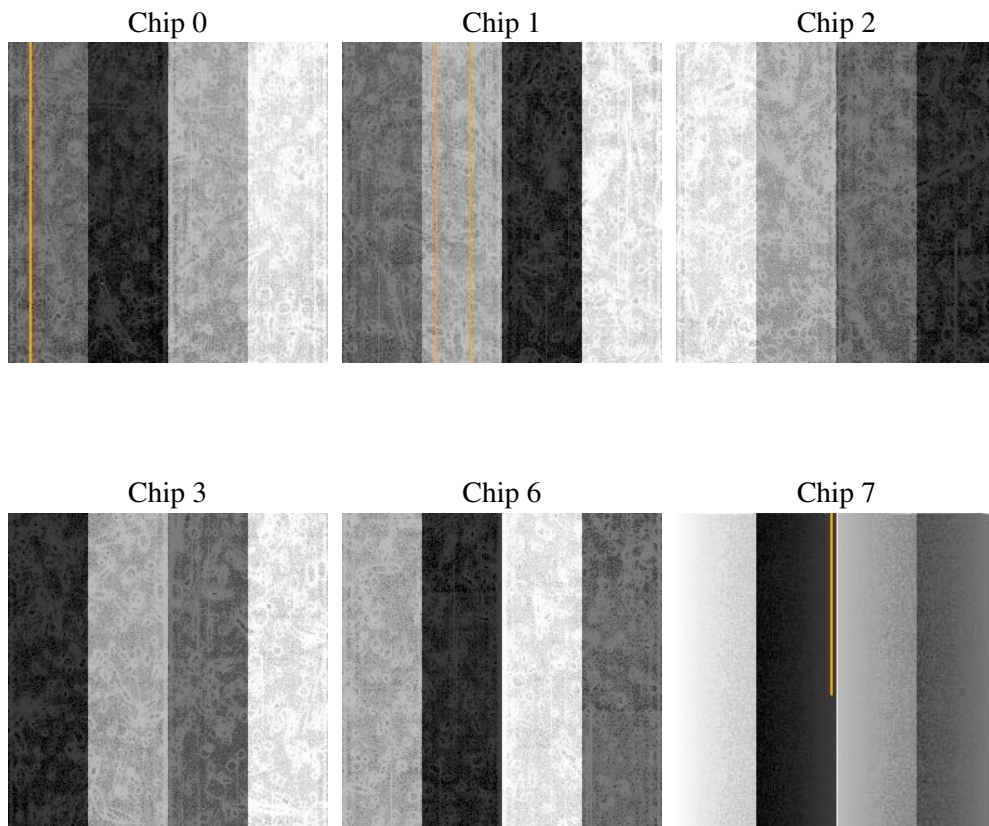
2 OBI

2.1 OBI

2.1.1 Images



2.1.2 Bias



2.1.3 Parameters

obi_num	1
ascdsver	7.6.9
caldbver	3.2.3
date	2006-09-15T05:27:56
revision	2

sched_exp_time	0.0
ontime	8465.4839149415
ontime0	3607.2703036666
ontime1	3665.6078571379
ontime2	3506.7989709973
ontime3	3516.5211536884
ontime6	3837.3814713955
ontime7	8465.4839149415
l1events	1560614

2.1.4 Events

	ccd 0	ccd 1	ccd 2	ccd 3	ccd 6	ccd 7
level 1 events	208642	211573	205734	206446	232483	495736
rejected events	25146	24852	25480	25995	27480	61287
rejected %	12%	11%	12%	12%	11%	12%

	ccd 0	ccd 1	ccd 2	ccd 3	ccd 6	ccd 7
grade 0 events	100892	102591	100064	100479	111894	78768
	48%	48%	48%	48%	48%	15%
grade 1 events	498	512	465	546	518	178
	0%	0%	0%	0%	0%	0%
grade 2 events	32350	32945	31541	31545	35144	131633
	15%	15%	15%	15%	15%	26%
grade 3 events	11845	11795	11430	11384	12647	32203
	5%	5%	5%	5%	5%	6%
grade 4 events	11543	11869	11422	11437	12675	31859
	5%	5%	5%	5%	5%	6%
grade 5 events	1817	1874	1778	1786	2079	8134
	0%	0%	0%	0%	0%	1%
grade 6 events	26866	27521	25797	25606	32643	159986
	12%	13%	12%	12%	14%	32%
grade 7 events	22831	22466	23237	23663	24883	52975
	10%	10%	11%	11%	10%	10%

2.2 Compared Parameters

Parameter	Planned	Actual	Parameter	Planned	Actual
Instrument	ACIS	ACIS	Obspar format version number	6	6
Detector	ACIS-012367	ACIS-012367	Obspar file type	PREDICTED	ACTUAL
Grating	NONE	NONE	Obspar update status	NONE	UPDATED
Data mode	FAINT	FAINT	On-chip summing requested	N	N
Observation mode	SECONDARY	SECONDARY	Subarray requested	NONE	NONE
Pointing RA	0	83.05195947043039	Alternating exposures requested	N	N
Pointing Dec	0	59.98798927535599	Primary exposure time	0.000000	3.2
Pointing Roll	0.0	302.3648844918827			
SIM focus pos (mm)	-0.782348	-0.6828225247311905			
SIM defocus (mm)	0	0.8505141146731063			
SIM translation stage pos (mm)	-233.592463	250.466033080201			
SIM translation stage offset (mm)	0	-0.01005468664627074			
Observation start time	136414406.961	136414405.93615			
Observation start date	2002-04-28T20:53:27	2002-04-28T20:53:25			
Observation end time	136437420.262	136437419.23709			
Observation end date	2002-04-29T03:17:00	2002-04-29T03:16:59			
Read mode	TIMED	TIMED			

2.3 Aspect

2.4 Star Slots

2.5 FID Slots

A Summary

A.1 Status

V&V Scientist	Doug Morgan
V&V Date (YYYY-MM-DD)	2006.09.15
V&V Edition	1
V&V Disposition and Status	OK
V&V Charge Time	8.46399996

A.2 Comments