

V&V Reference Report

L2 ASCDS Version : 7.6.9

Observation 61217 - L2 Version 001
Chandra X-Ray Center

L2 Processing Date : Sep 15 2006

Contents

1	Front	2
2	OBI	3
2.1	OBI	3
2.1.1	Images	3
2.1.2	Bias	3
2.1.3	Parameters	4
2.1.4	Events	4
2.2	Compared Parameters	5
2.3	Aspect	6
2.4	Star Slots	8
2.5	FID Slots	8
A	Summary	9
A.1	Status	9
A.2	Comments	9

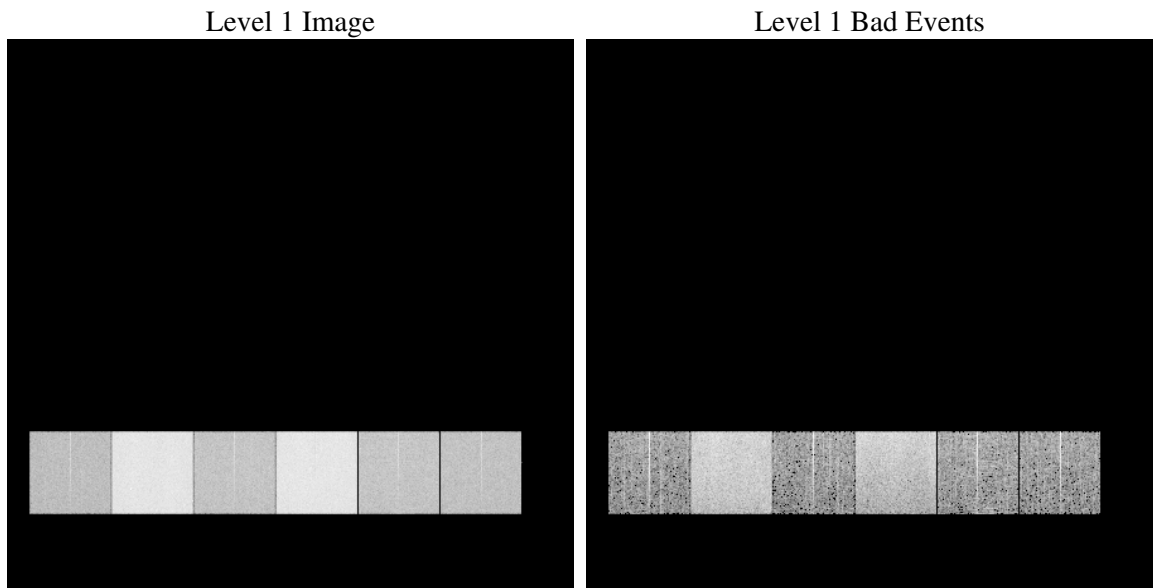
1 Front

seq_num	
obs_id	61217
title	ACIS-456789 diagnostics
observer	CHANDRA engineering request/realtime commanding
object	
dtcycle	0
cycle	P
ra_targ	0.0
dec_targ	0.0
ra_nom	179.00442806117
dec_nom	0.97171734663913
roll_nom	246.05661864431
revision	2
ontime	7505.0839513242
livetime	7410.0500593135
ontime4	2697.8653388619
ontime5	8127.3492729664
ontime6	3008.9636196792
ontime7	7505.0839513242
ontime8	3012.2863413692
ontime9	2862.9934412539
l2events	1291708

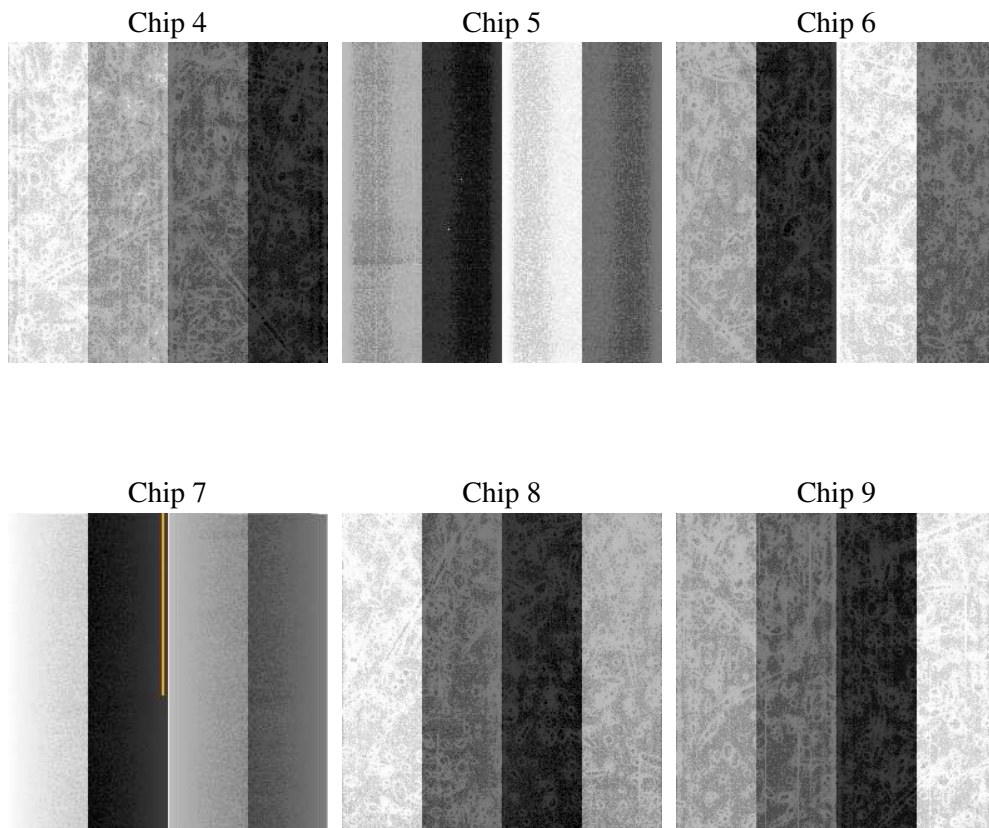
2 OBI

2.1 OBI

2.1.1 Images



2.1.2 Bias



2.1.3 Parameters

obi_num	0
ascdsver	7.6.9
caldsver	3.2.3
date	2006-09-15T06:07:36
revision	2

sched_exp_time	0.0
ontime	7528.8582172096
ontime4	2709.5071610212
ontime5	8151.1235388517
ontime6	3020.6464818418
ontime7	7528.8582172096
ontime8	3023.8871235549
ontime9	2874.7994234264
l1events	1567298

2.1.4 Events

	ccd 4	ccd 5	ccd 6	ccd 7	ccd 8	ccd 9
level 1 events	154955	431165	183775	440852	187001	169550
rejected events	23194	69663	23214	56140	26129	23134
rejected %	14%	16%	12%	12%	13%	13%

	ccd 4	ccd 5	ccd 6	ccd 7	ccd 8	ccd 9
grade 0 events	74609	39647	88332	70819	88958	80990
	48%	9%	48%	16%	47%	47%
grade 1 events	367	118	417	170	417	392
	0%	0%	0%	0%	0%	0%
grade 2 events	23742	175468	28000	116209	28674	25960
	15%	40%	15%	26%	15%	15%
grade 3 events	7904	11593	9913	28850	10057	8862
	5%	2%	5%	6%	5%	5%
grade 4 events	8051	11237	9828	28671	9971	8932
	5%	2%	5%	6%	5%	5%
grade 5 events	1442	7552	1634	7392	1939	1640
	0%	1%	0%	1%	1%	0%
grade 6 events	18110	124719	25203	141558	23862	22362
	11%	28%	13%	32%	12%	13%
grade 7 events	20730	60831	20448	47183	23123	20412
	13%	14%	11%	10%	12%	12%

2.2 Compared Parameters

Parameter	Planned	Actual	Parameter	Planned	Actual
Instrument	ACIS	ACIS	Obspar format version number	6	6
Detector	ACIS-456789	ACIS-456789	Obspar file type	PREDICTED	ACTUAL
Grating	NONE	NONE	Obspar update status	NONE	UPDATED
Data mode	FAINT	FAINT	On-chip summing requested	N	N
Observation mode	SECONDARY	SECONDARY	Subarray requested	NONE	NONE
Pointing RA	0	179.004428061171	Alternating exposures requested	N	N
Pointing Dec	0	0.9717173466391323	Primary exposure time	3.2	3.2
Pointing Roll	0.0	246.0566186443106			
SIM focus pos (mm)	-0.684267	-0.6828225247311905			
SIM defocus (mm)	0	0.8505141146731063			
SIM translation stage pos (mm)	-190.132523	250.466033080201			
SIM translation stage offset (mm)	0	-0.01005468664627074			
Observation start time	136648699.420414	136648698.3957			
Observation start date	2002-05-01T13:58:19	2002-05-01T13:58:18			
Observation end time	136670009.171283	136670008.14657			
Observation end date	2002-05-01T19:53:29	2002-05-01T19:53:28			
Read mode	TIMED	TIMED			

2.3 Aspect

2.4 Star Slots

2.5 FID Slots

A Summary

A.1 Status

V&V Scientist	Doug Morgan
V&V Date (YYYY-MM-DD)	2006.09.15
V&V Edition	1
V&V Disposition and Status	OK
V&V Charge Time	7.50508395

A.2 Comments