

V&V Reference Report

L2 ASCDS Version : 7.6.9

Observation 61180 - L2 Version 001
Chandra X-Ray Center

L2 Processing Date : Sep 18 2006

Contents

1	Front	2
2	OBI	3
2.1	OBI	3
2.1.1	Images	3
2.1.2	Bias	3
2.1.3	Parameters	4
2.1.4	Events	4
2.2	Compared Parameters	5
2.3	Aspect	6
2.4	Star Slots	8
2.5	FID Slots	8
A	Summary	9
A.1	Status	9
A.2	Comments	9

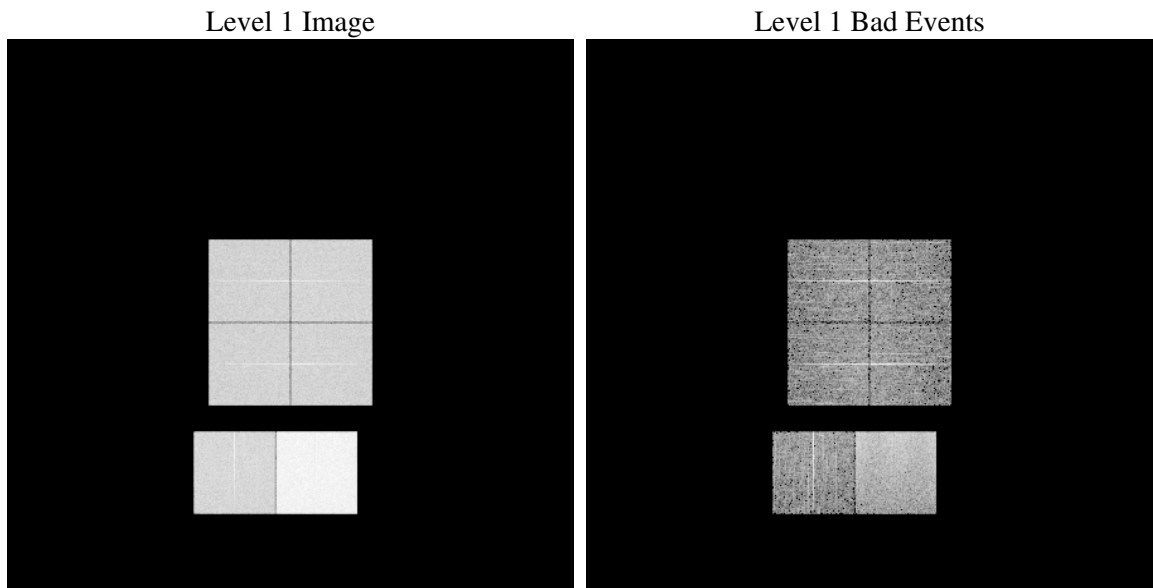
1 Front

seq_num	
obs_id	61180
title	ACIS-012367 diagnostics
observer	CHANDRA engineering request/realtime commanding
object	
dtcycle	0
cycle	P
ra_targ	0.0
dec_targ	0.0
ra_nom	279.99208131218
dec_nom	-37.97206528966
roll_nom	69.789709057421
revision	2
ontime	7794.9011996686
livetime	7696.1974671524
ontime0	3345.0707578659
ontime1	3516.8855525851
ontime2	3303.0194174945
ontime3	3361.1942862868
ontime6	3656.3310085833
ontime7	7794.9011996686
l2events	1210863

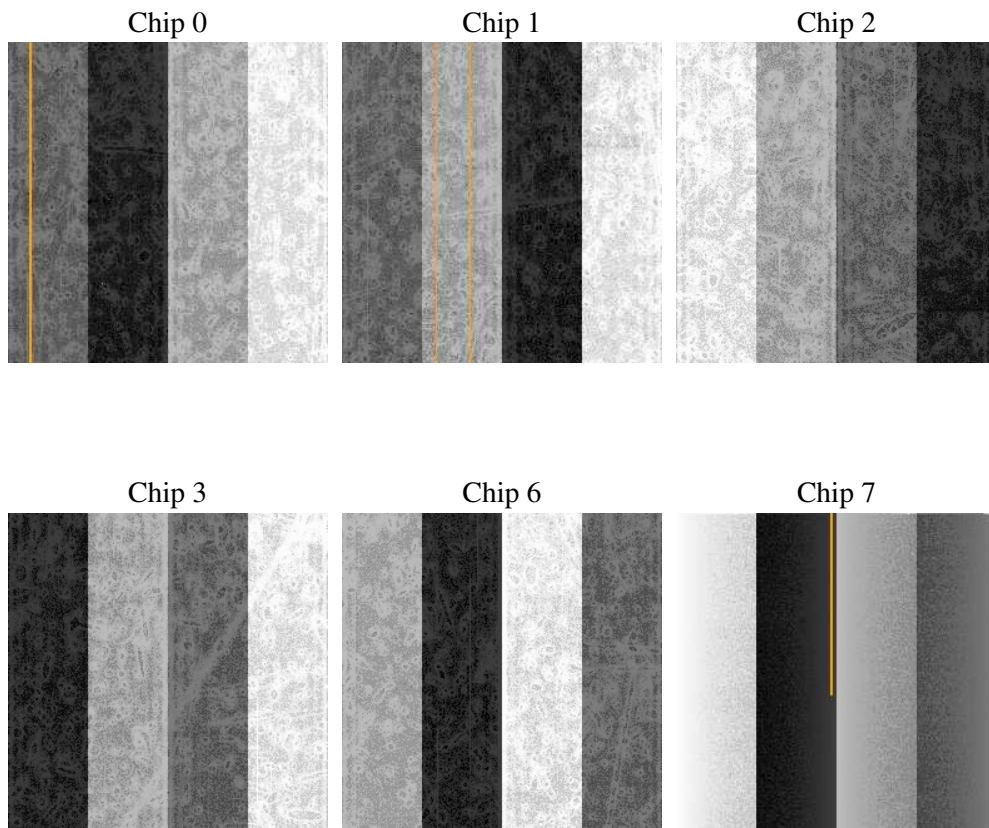
2 OBI

2.1 OBI

2.1.1 Images



2.1.2 Bias



2.1.3 Parameters

obi_num	0
ascdsver	7.6.9
caldbver	3.2.3
date	2006-09-18T09:53:43
revision	2

sched_exp_time	0.0
ontime	7797.8596481979
ontime0	3347.9881663918
ontime1	3519.7619211078
ontime2	3305.8547460139
ontime3	3364.1937748194
ontime6	3659.1252971292
ontime7	7797.8596481979
l1events	1439307

2.1.4 Events

	ccd 0	ccd 1	ccd 2	ccd 3	ccd 6	ccd 7
level 1 events	189946	199183	191341	193993	217697	447147
rejected events	23412	23301	24771	24711	26297	53121
rejected %	12%	11%	12%	12%	12%	11%

	ccd 0	ccd 1	ccd 2	ccd 3	ccd 6	ccd 7
grade 0 events	91601	97300	92633	95282	104307	74772
	48%	48%	48%	49%	47%	16%
grade 1 events	478	494	439	459	495	194
	0%	0%	0%	0%	0%	0%
grade 2 events	29780	30940	29771	29297	33300	116701
	15%	15%	15%	15%	15%	26%
grade 3 events	10565	11285	10527	10782	11861	30154
	5%	5%	5%	5%	5%	6%
grade 4 events	10473	11155	10530	10725	11906	30043
	5%	5%	5%	5%	5%	6%
grade 5 events	1573	1746	1561	1764	1925	7165
	0%	0%	0%	0%	0%	1%
grade 6 events	24282	25392	23301	23349	30185	142535
	12%	12%	12%	12%	13%	31%
grade 7 events	21194	20871	22579	22335	23718	45583
	11%	10%	11%	11%	10%	10%

2.2 Compared Parameters

Parameter	Planned	Actual	Parameter	Planned	Actual
Instrument	ACIS	ACIS	Obspar format version number	6	6
Detector	ACIS-012367	ACIS-012367	Obspar file type	PREDICTED	ACTUAL
Grating	NONE	NONE	Obspar update status	NONE	UPDATED
Data mode	FAINT	FAINT	On-chip summing requested	N	N
Observation mode	SECONDARY	SECONDARY	Subarray requested	NONE	NONE
Pointing RA	0	279.9920813121755	Alternating exposures requested	N	N
Pointing Dec	0	-37.97206528965985	Primary exposure time	0.000000	3.2
Pointing Roll	0.0	69.78970905742096			
SIM focus pos (mm)	-0.782348	-0.6828225247311905			
SIM defocus (mm)	0	0.8505141146731063			
SIM translation stage pos (mm)	-233.592463	250.466033080201			
SIM translation stage offset (mm)	0	-0.01005468664627074			
Observation start time	139122627.221	139122626.1966			
Observation start date	2002-05-30T05:10:27	2002-05-30T05:10:26			
Observation end time	139159379.623	139159378.5981			
Observation end date	2002-05-30T15:23:00	2002-05-30T15:22:58			
Read mode	TIMED	TIMED			

2.3 Aspect

2.4 Star Slots

2.5 FID Slots

A Summary

A.1 Status

V&V Scientist	Jen Lauer
V&V Date (YYYY-MM-DD)	2006.09.18
V&V Edition	1
V&V Disposition and Status	OK
V&V Charge Time	7.79490119

A.2 Comments