

V&V Reference Report

L2 ASCDS Version : 8.4.5

Observation 61172 - L2 Version 3
Chandra X-Ray Center

L2 Processing Date : Oct 9 2012

Contents

1	Front	2
2	OBI	3
2.1	OBI	3
2.1.1	Images	3
2.1.2	Bias	3
2.1.3	Parameters	4
2.1.4	Events	4
2.2	Compared Parameters	5
2.3	Star Slots	6
2.4	FID Slots	6
A	Summary	7
A.1	Status	7
A.2	Comments	7

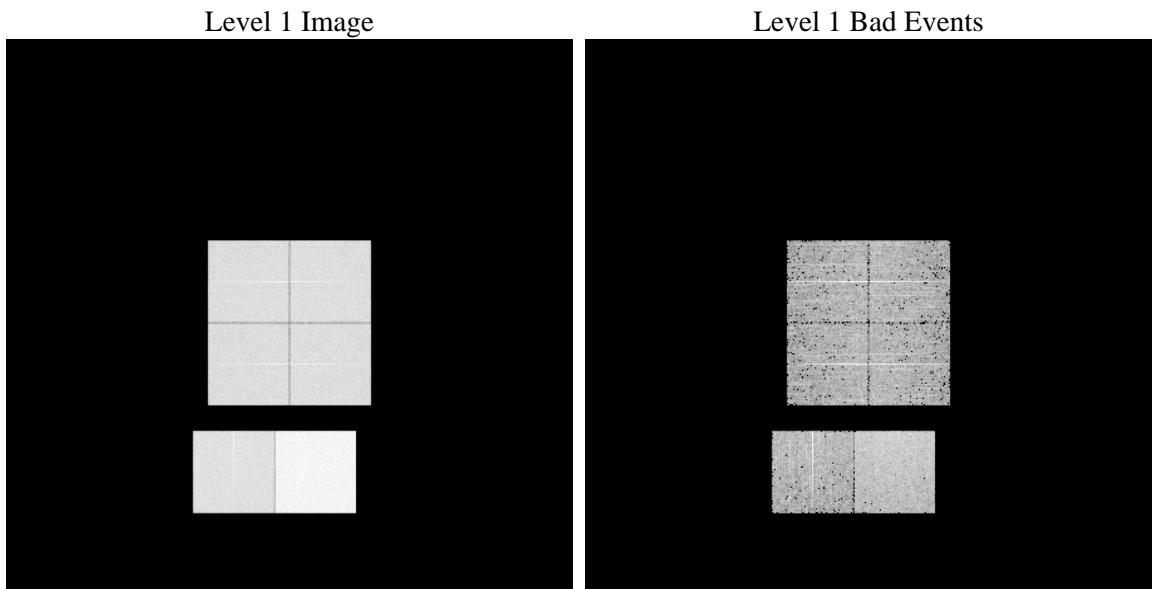
1 Front

seq_num	 	Sequence number
obs_id	61172	Observation id
title	ACIS-012367 diagnostics	Proposal title
observer	CHANDRA engineering request/realtime commanding	Principal investig
object	 	Source name
dtcycle	0	
cycle	P	events from which exps? Prim/Second/Both
ra_targ	0.0	Observer's specified target RA [deg]
dec_targ	0.0	Observer's specified target Dec [deg]
ra_nom	180.00540484565	Nominal RA [deg]
dec_nom	-5.7281049764346	Nominal Dec [deg]
roll_nom	248.0377255188	Nominal Roll [deg]
revision	3	Processing version of data
ontime	7795.1999709606	Sum of GTIs [s]
livetime	7696.4924552224	Livetime [s]
ontime0	3409.0792039931	Sum of GTIs [s]
ontime1	3471.7365384698	Sum of GTIs [s]
ontime2	3286.998036176	Sum of GTIs [s]
ontime3	3321.4903390706	Sum of GTIs [s]
ontime6	3692.1245389581	Sum of GTIs [s]
ontime7	7795.1999709606	Sum of GTIs [s]
l2events	1218310	Number of level 2 events

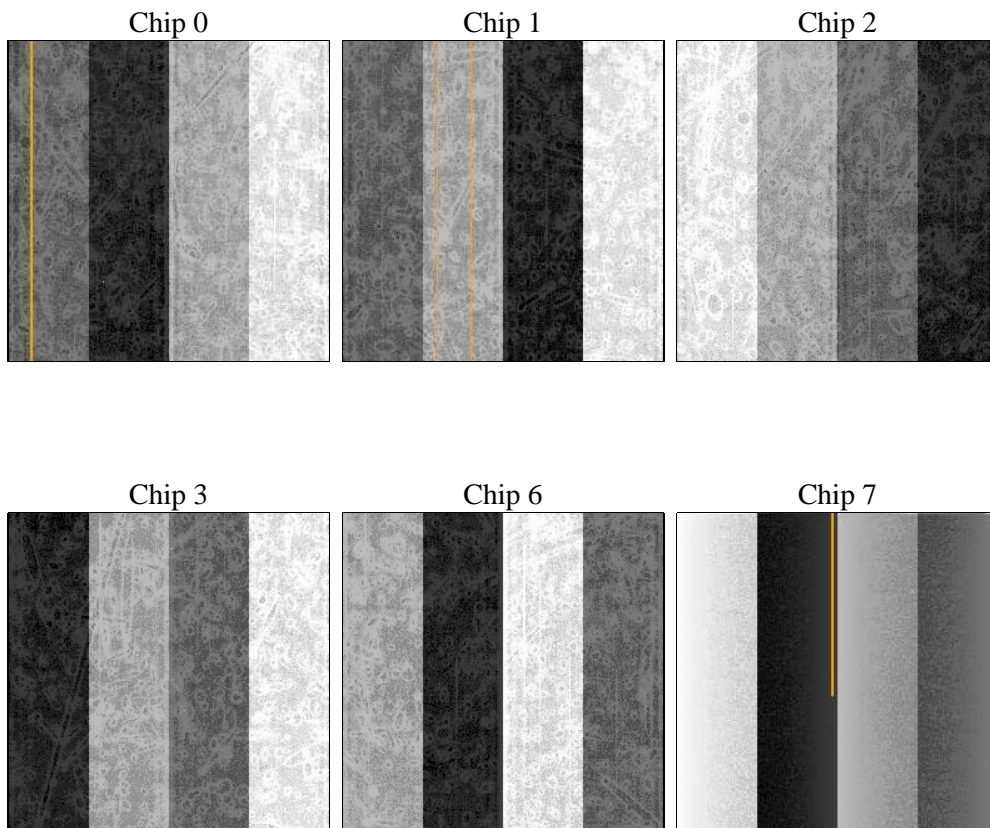
2 OBI

2.1 OBI

2.1.1 Images



2.1.2 Bias



2.1.3 Parameters

obi_num	1	Obi number	sched_exp_time	0.0	[s] Scheduled observation exposure time
ascdsver	8.4.5	Processing system revision	ontime	7795.1999709606	Sum of GTIs [s]
caldsver	4.5.2	 	ontime0	3409.0792039931	Sum of GTIs [s]
date	2012-10-09T03:56:36	Date and time of file creation	ontime1	3471.7365384698	Sum of GTIs [s]
revision	3	Processing version of data	ontime2	3286.998036176	Sum of GTIs [s]
			ontime3	3321.4903390706	Sum of GTIs [s]
			ontime6	3692.1245389581	Sum of GTIs [s]
			ontime7	7795.1999709606	Sum of GTIs [s]
			l1events	1438171	Number of level 1 events

2.1.4 Events

	ccd 0	ccd 1	ccd 2	ccd 3	ccd 6	ccd 7		ccd 0	ccd 1	ccd 2	ccd 3	ccd 6	ccd 7
level 1 events	192750	196998	189289	191496	220490	447148	grade 0 events	92388	94969	91859	92644	105267	102893
rejected events	24294	25127	23945	25124	27639	41521		47%	48%	48%	48%	47%	23%
rejected %	12%	12%	12%	13%	12%	9%	grade 1 events	511	487	483	494	489	275
								0%	0%	0%	0%	0%	0%
							grade 2 events	30045	30300	29165	29242	33784	90067
								15%	15%	15%	15%	15%	20%
							grade 3 events	10681	10860	10485	10654	11998	41185
								5%	5%	5%	5%	5%	9%
							grade 4 events	10670	11073	10456	10644	11702	40794
								5%	5%	5%	5%	5%	9%
							grade 5 events	1651	1725	1514	1751	1994	8202
								0%	0%	0%	0%	0%	1%
							grade 6 events	24672	24842	23515	23188	30271	130863
								12%	12%	12%	12%	13%	29%
							grade 7 events	22132	22742	21812	22879	24985	32869
								11%	11%	11%	11%	11%	7%

2.2 Compared Parameters

Parameter	Planned	Actual	Parameter	Planned	Actual
Instrument	ACIS	ACIS	Obspar format version number	7	7
Detector	ACIS-012367	ACIS-012367	Obspar file type	PREDICTED	ACTUAL
Grating	NONE	NONE	Obspar update status	NONE	UPDATED
Data mode	FAINT	FAINT	On-chip summing requested	N	N
Observation mode	SECONDARY	SECONDARY	Subarray requested	NONE	NONE
[deg] Pointing RA	0	180.0054048456545	Alternating exposures requested	N	N
[deg] Pointing Dec	0	-5.728104976434612	[s] Primary exposure time	3.2	3.2
[deg] Pointing Roll	0.0	248.0377255188034			
[mm] SIM focus pos	-0.782348	-0.6828225247311905			
[mm] SIM defocus	0	0.8505141146731063			
[mm] SIM translation stage pos	-233.592463	250.466033080201			
[mm] SIM translation stage offset	0	-0.01005468664627074			
[s] Observation start time (MET)	139807960.699296	139807959.6746			
Observation start date	2002-06-07T03:32:41	2002-06-07T03:32:39			
[s] Observation end time (MET)	139844805.350817	139844804.32611			
Observation end date	2002-06-07T13:46:45	2002-06-07T13:46:44			
Read mode	TIMED	TIMED			

2.3 Star Slots

2.4 FID Slots

A Summary

A.1 Status

V&V Scientist	Jen Lauer
V&V Date (YYYY-MM-DD)	2012.10.18
V&V Edition	1
V&V Disposition and Status	OK
V&V Charge Time	7.7951999709606

A.2 Comments