

V&V Reference Report

L2 ASCDS Version : 7.6.9

Observation 61169 - L2 Version 002
Chandra X-Ray Center

L2 Processing Date : Nov 17 2006

Contents

1	Front	2
2	OBI	3
2.1	OBI	3
2.1.1	Images	3
2.1.2	Bias	3
2.1.3	Parameters	4
2.1.4	Events	4
2.2	Compared Parameters	5
2.3	Aspect	6
2.4	Star Slots	8
2.5	FID Slots	8
A	Summary	9
A.1	Status	9
A.2	Comments	9

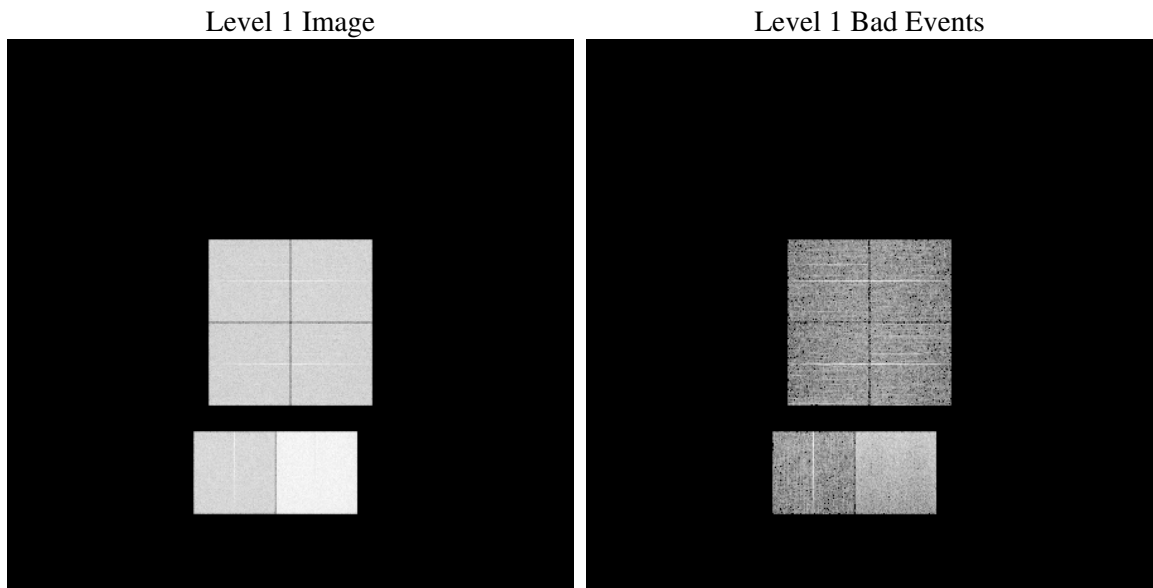
1 Front

seq_num	
obs_id	61169
title	ACIS-012367 diagnostics
observer	CHANDRA engineering request/realtime commanding
object	
dtcycle	0
cycle	P
ra_targ	0.0
dec_targ	0.0
ra_nom	180.00539471785
dec_nom	-6.7281143503671
roll_nom	247.95613038298
revision	3
ontime	8457.5590081811
livetime	8350.4643034889
ontime0	3745.5461410284
ontime1	3875.2278634608
ontime2	3622.4692395926
ontime3	3657.9561105371
ontime6	3946.6117374897
ontime7	8457.5590081811
l2events	1302664

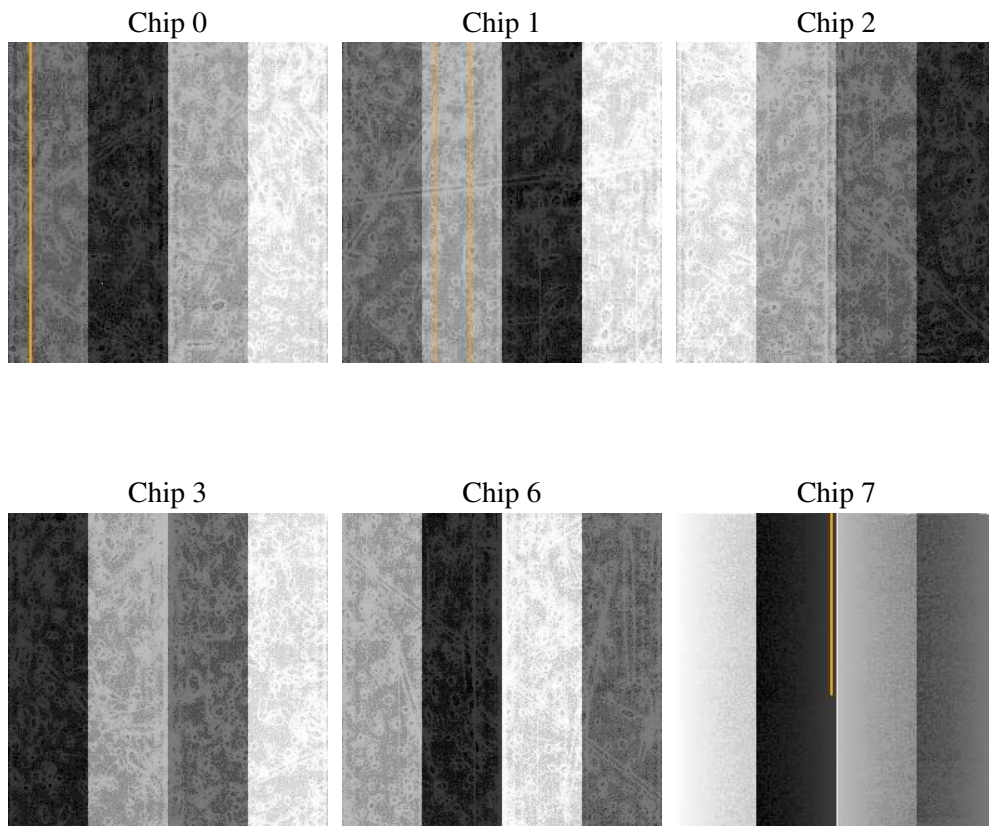
2 OBI

2.1 OBI

2.1.1 Images



2.1.2 Bias



2.1.3 Parameters

obi_num	0
ascdsver	7.6.9
caldbver	3.2.4
date	2006-11-17T15:55:42
revision	3

sched_exp_time	0.0
ontime	8459.0111455917
ontime0	3746.6342583895
ontime1	3876.2749408185
ontime2	3623.475276947
ontime3	3659.1263079047
ontime6	3947.5767348707
ontime7	8459.0111455917
l1events	1556477

2.1.4 Events

	ccd 0	ccd 1	ccd 2	ccd 3	ccd 6	ccd 7
level 1 events	210563	217238	206836	210866	232388	478586
rejected events	26207	25972	26729	28217	28864	60896
rejected %	12%	11%	12%	13%	12%	12%

	ccd 0	ccd 1	ccd 2	ccd 3	ccd 6	ccd 7
grade 0 events	101603	105232	99940	102510	110917	74612
	48%	48%	48%	48%	47%	15%
grade 1 events	508	508	467	515	549	168
	0%	0%	0%	0%	0%	0%
grade 2 events	32706	34105	31921	31966	35361	126913
	15%	15%	15%	15%	15%	26%
grade 3 events	11647	11957	11373	11350	12423	30742
	5%	5%	5%	5%	5%	6%
grade 4 events	11395	12239	11292	11333	12404	30216
	5%	5%	5%	5%	5%	6%
grade 5 events	1795	1911	1666	1937	1987	7894
	0%	0%	0%	0%	0%	1%
grade 6 events	27005	27733	25617	25490	32419	155241
	12%	12%	12%	12%	13%	32%
grade 7 events	23904	23553	24560	25765	26328	52800
	11%	10%	11%	12%	11%	11%

2.2 Compared Parameters

Parameter	Planned	Actual	Parameter	Planned	Actual
Instrument	ACIS	ACIS	Obspar format version number	6	6
Detector	ACIS-012367	ACIS-012367	Obspar file type	PREDICTED	ACTUAL
Grating	NONE	NONE	Obspar update status	NONE	UPDATED
Data mode	FAINT	FAINT	On-chip summing requested	N	N
Observation mode	SECONDARY	SECONDARY	Subarray requested	NONE	NONE
Pointing RA	0	180.005394717851	Alternating exposures requested	N	N
Pointing Dec	0	-6.728114350367136	Primary exposure time	0.000000	3.2
Pointing Roll	0.0	247.9561303829768			
SIM focus pos (mm)	-0.782348	-0.7809083437167272			
SIM defocus (mm)	0	0.7524282956875696			
SIM translation stage pos (mm)	-233.592463	250.466033080201			
SIM translation stage offset (mm)	0	-0.01005468664627074			
Observation start time	140075719.41	140075718.38555			
Observation start date	2002-06-10T05:55:19	2002-06-10T05:55:18			
Observation end time	140097037.361	140097036.33642			
Observation end date	2002-06-10T11:50:37	2002-06-10T11:50:36			
Read mode	TIMED	TIMED			

2.3 Aspect

2.4 Star Slots

2.5 FID Slots

A Summary

A.1 Status

V&V Scientist	Beth Sundheim
V&V Date (YYYY-MM-DD)	2006.11.17
V&V Edition	1
V&V Disposition and Status	OK
V&V Charge Time	8.457559

A.2 Comments

Focal plane temperature is warmer than -118.7 C degrees during the first half of this observation.