

V&V Reference Report

L2 ASCDS Version : 7.6.9

Observation 61166 - L2 Version 001
Chandra X-Ray Center

L2 Processing Date : Sep 19 2006

Contents

1	Front	2
2	OBI	3
2.1	OBI	3
2.1.1	Images	3
2.1.2	Bias	3
2.1.3	Parameters	4
2.1.4	Events	4
2.2	Compared Parameters	5
2.3	Aspect	6
2.4	Star Slots	8
2.5	FID Slots	8
A	Summary	9
A.1	Status	9
A.2	Comments	9

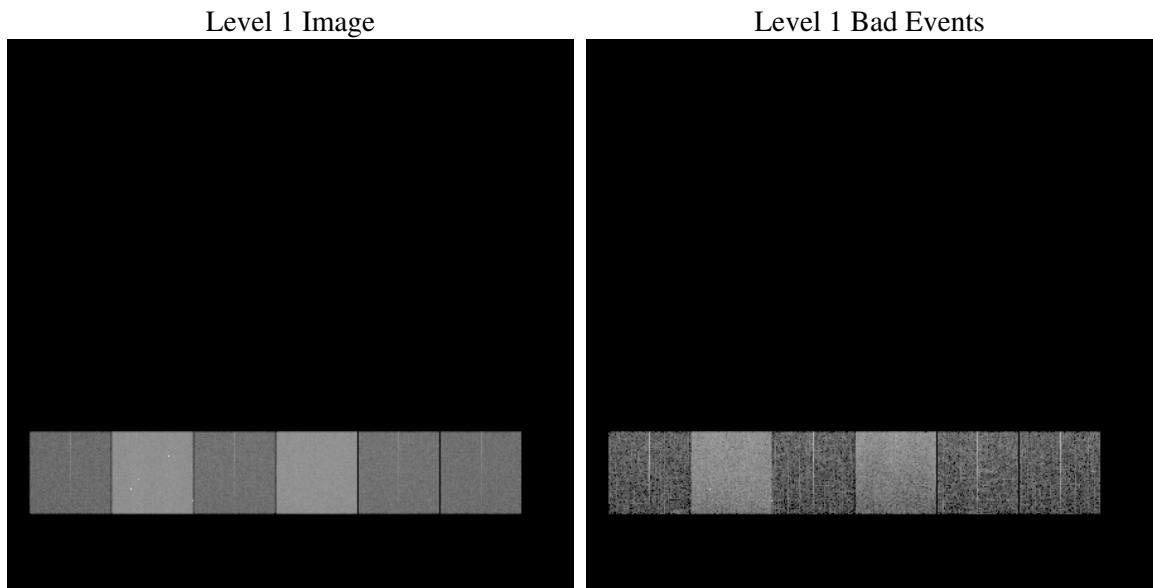
1 Front

seq_num	
obs_id	61166
title	ACIS-456789 diagnostics
observer	CHANDRA engineering request/realtime commanding
object	
dtcycle	0
cycle	P
ra_targ	0.0
dec_targ	0.0
ra_nom	289.98831970586
dec_nom	-30.97319334882
roll_nom	77.637900153955
revision	2
ontime	7715.3786159158
livetime	7617.6818462378
ontime4	2808.5255557001
ontime5	8308.4748155773
ontime6	3013.3581048846
ontime7	7715.3786159158
ontime8	3096.9769989848
ontime9	2990.5475257933
l2events	1294625

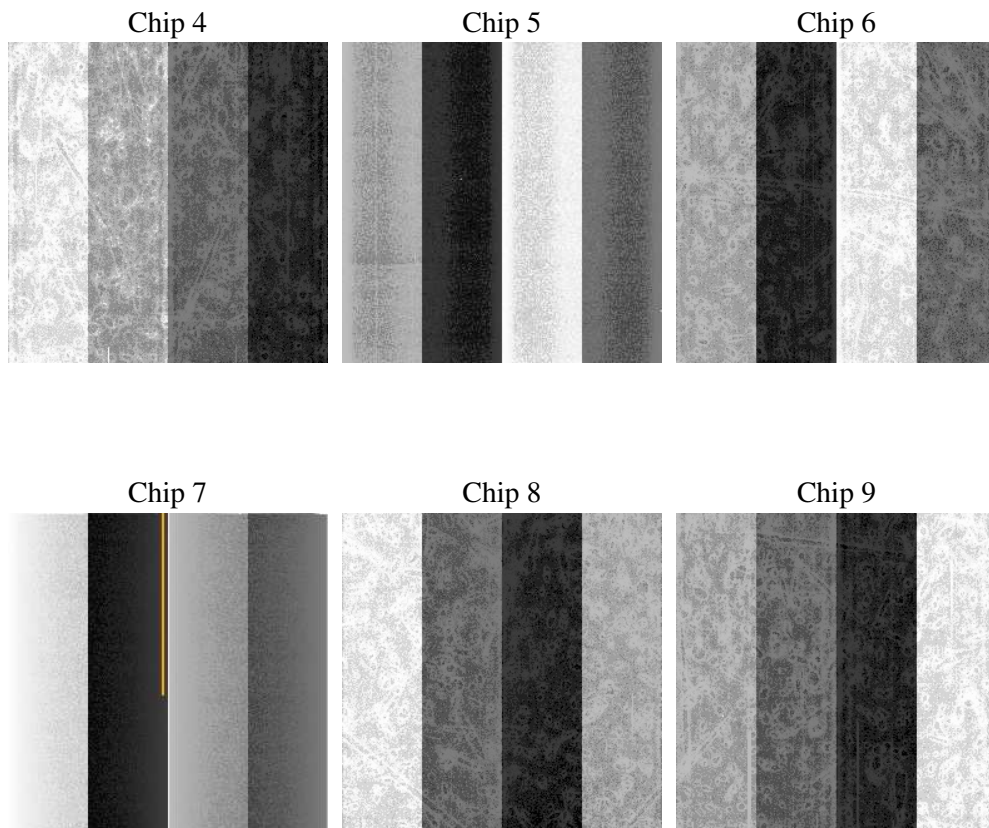
2 OBI

2.1 OBI

2.1.1 Images



2.1.2 Bias



2.1.3 Parameters

obi_num	0
ascdsver	7.6.9
caldbver	3.2.3
date	2006-09-19T21:24:00
revision	2

sched_exp_time	0.0
ontime	7716.8316834867
ontime4	2809.978623271
ontime5	8309.9278831482
ontime6	3014.1637640297
ontime7	7716.8316834867
ontime8	3098.4300665557
ontime9	2991.4763049483
l1events	1566037

2.1.4 Events

	ccd 4	ccd 5	ccd 6	ccd 7	ccd 8	ccd 9
level 1 events	156444	433000	178749	439835	186660	171349
rejected events	22057	67298	22403	54566	25059	22114
rejected %	14%	15%	12%	12%	13%	12%

	ccd 4	ccd 5	ccd 6	ccd 7	ccd 8	ccd 9
grade 0 events	75668	45296	85053	71507	88775	81810
	48%	10%	47%	16%	47%	47%
grade 1 events	392	262	420	158	440	420
	0%	0%	0%	0%	0%	0%
grade 2 events	23707	175182	27017	115663	28700	26580
	15%	40%	15%	26%	15%	15%
grade 3 events	8270	12293	9660	28693	10301	9436
	5%	2%	5%	6%	5%	5%
grade 4 events	8336	12067	9715	28717	10341	9285
	5%	2%	5%	6%	5%	5%
grade 5 events	1494	7798	1699	7313	1871	1684
	0%	1%	0%	1%	1%	0%
grade 6 events	18406	120864	24901	140689	23484	22124
	11%	27%	13%	31%	12%	12%
grade 7 events	20171	59238	20284	47095	22748	20010
	12%	13%	11%	10%	12%	11%

2.2 Compared Parameters

Parameter	Planned	Actual	Parameter	Planned	Actual
Instrument	ACIS	ACIS	Obspar format version number	6	6
Detector	ACIS-456789	ACIS-456789	Obspar file type	PREDICTED	ACTUAL
Grating	NONE	NONE	Obspar update status	NONE	UPDATED
Data mode	FAINT	FAINT	On-chip summing requested	N	N
Observation mode	SECONDARY	SECONDARY	Subarray requested	NONE	NONE
Pointing RA	0	289.9883197058638	Alternating exposures requested	N	N
Pointing Dec	0	-30.97319334882031	Primary exposure time	3.2	3.2
Pointing Roll	0.0	77.63790015395519			
SIM focus pos (mm)	-0.684267	-0.6828225247311905			
SIM defocus (mm)	0	0.8505141146731063			
SIM translation stage pos (mm)	-190.132523	250.466033080201			
SIM translation stage offset (mm)	0	-0.01005468664627074			
Observation start time	140297445.369341	140297444.34462			
Observation start date	2002-06-12T19:30:45	2002-06-12T19:30:44			
Observation end time	140321434.470323	140321433.4456			
Observation end date	2002-06-13T02:10:34	2002-06-13T02:10:33			
Read mode	TIMED	TIMED			

2.3 Aspect

2.4 Star Slots

2.5 FID Slots

A Summary

A.1 Status

V&V Scientist	Jen Lauer
V&V Date (YYYY-MM-DD)	2006.09.20
V&V Edition	1
V&V Disposition and Status	OK
V&V Charge Time	7.71537861

A.2 Comments