

V&V Reference Report

L2 ASCDS Version : 7.6.9

Observation 61165 - L2 Version 001
Chandra X-Ray Center

L2 Processing Date : Sep 19 2006

Contents

1	Front	2
2	OBI	3
2.1	OBI	3
2.1.1	Images	3
2.1.2	Bias	3
2.1.3	Parameters	4
2.1.4	Events	4
2.2	Compared Parameters	5
2.3	Aspect	6
2.4	Star Slots	8
2.5	FID Slots	8
A	Summary	9
A.1	Status	9
A.2	Comments	9

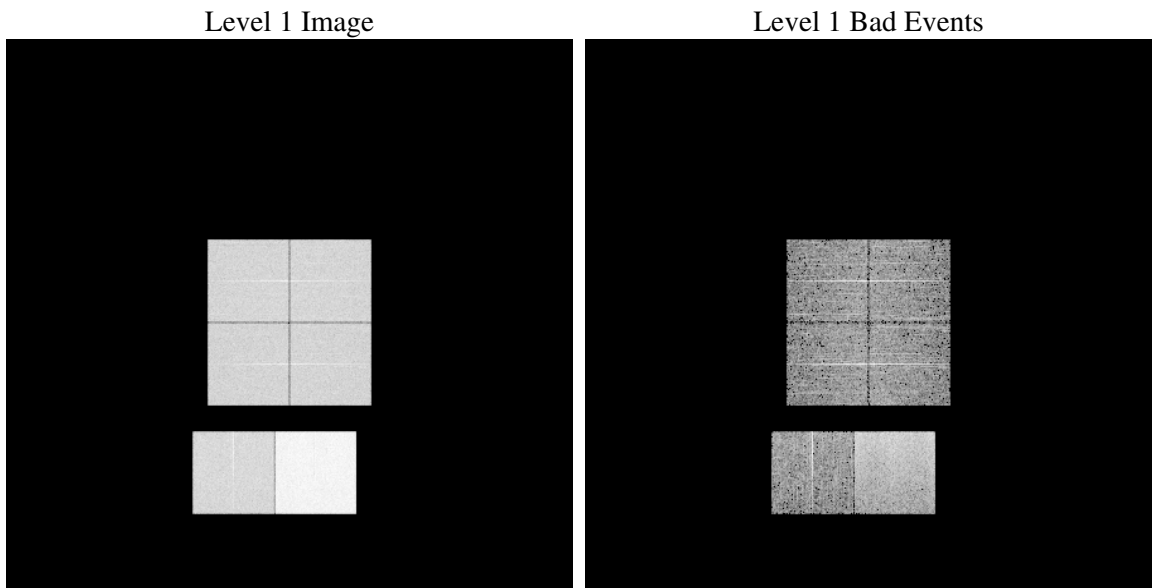
1 Front

seq_num	
obs_id	61165
title	ACIS-012367 diagnostics
observer	CHANDRA engineering request/realtime commanding
object	
dtcycle	0
cycle	P
ra_targ	0.0
dec_targ	0.0
ra_nom	152.00227917912
dec_nom	-14.02852202082
roll_nom	241.60182375713
revision	2
ontime	7796.7998386323
livetime	7698.0720644064
ontime0	3509.0343775153
ontime1	3492.8696098328
ontime2	3356.7890034914
ontime3	3320.9732342064
ontime6	3651.7614932656
ontime7	7796.7998386323
l2events	1204801

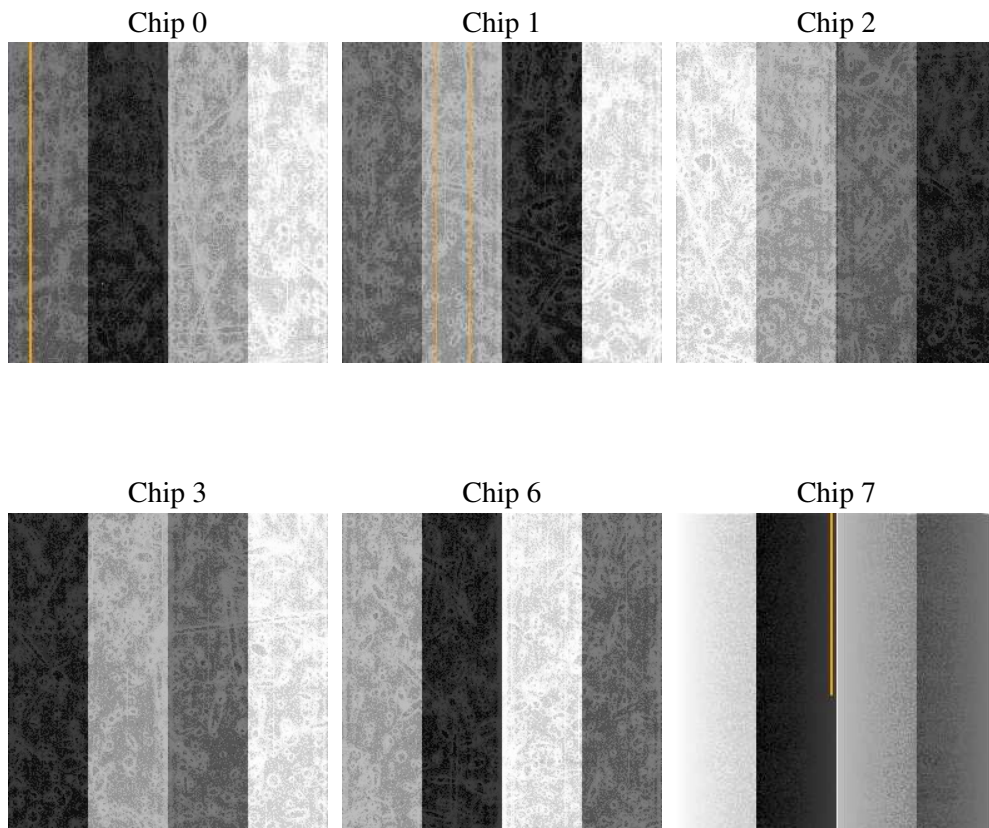
2 OBI

2.1 OBI

2.1.1 Images



2.1.2 Bias



2.1.3 Parameters

obi_num	0
ascdsver	7.6.9
caldbver	3.2.3
date	2006-09-19T21:34:18
revision	2

sched_exp_time	0.0
ontime	7797.8449288905
ontime0	3510.0384277701
ontime1	3493.8326200843
ontime2	3357.7109737396
ontime3	3322.0593644679
ontime6	3652.6424235404
ontime7	7797.8449288905
l1events	1438014

2.1.4 Events

	ccd 0	ccd 1	ccd 2	ccd 3	ccd 6	ccd 7
level 1 events	197244	197195	190859	191167	216410	445139
rejected events	24337	24358	24320	25178	26500	56100
rejected %	12%	12%	12%	13%	12%	12%

	ccd 0	ccd 1	ccd 2	ccd 3	ccd 6	ccd 7
grade 0 events	95336	95543	92381	92670	103842	71122
	48%	48%	48%	48%	47%	15%
grade 1 events	479	419	486	498	497	187
	0%	0%	0%	0%	0%	0%
grade 2 events	30672	30207	29349	29017	32501	117349
	15%	15%	15%	15%	15%	26%
grade 3 events	10906	11197	10420	10654	11697	28935
	5%	5%	5%	5%	5%	6%
grade 4 events	11010	10900	10382	10651	11882	29006
	5%	5%	5%	5%	5%	6%
grade 5 events	1691	1707	1616	1697	1997	7564
	0%	0%	0%	0%	0%	1%
grade 6 events	24983	24990	24007	22997	29988	142627
	12%	12%	12%	12%	13%	32%
grade 7 events	22167	22232	22218	22983	24006	48349
	11%	11%	11%	12%	11%	10%

2.2 Compared Parameters

Parameter	Planned	Actual	Parameter	Planned	Actual
Instrument	ACIS	ACIS	Obspar format version number	6	6
Detector	ACIS-012367	ACIS-012367	Obspar file type	PREDICTED	ACTUAL
Grating	NONE	NONE	Obspar update status	NONE	UPDATED
Data mode	FAINT	FAINT	On-chip summing requested	N	N
Observation mode	SECONDARY	SECONDARY	Subarray requested	NONE	NONE
Pointing RA	0	152.0022791791174	Alternating exposures requested	N	N
Pointing Dec	0	-14.02852202082046	Primary exposure time	3.2	3.2
Pointing Roll	0.0	241.6018237571288			
SIM focus pos (mm)	-0.782348	-0.7809083437167272			
SIM defocus (mm)	0	0.7524282956875696			
SIM translation stage pos (mm)	-233.592463	250.466033080201			
SIM translation stage offset (mm)	0	-0.01005468664627074			
Observation start time	140493640.627377	140493639.60264			
Observation start date	2002-06-15T02:00:41	2002-06-15T02:00:39			
Observation end time	140531992.028949	140531991.00421			
Observation end date	2002-06-15T12:39:52	2002-06-15T12:39:51			
Read mode	TIMED	TIMED			

2.3 Aspect

2.4 Star Slots

2.5 FID Slots

A Summary

A.1 Status

V&V Scientist	Jen Lauer
V&V Date (YYYY-MM-DD)	2006.09.20
V&V Edition	1
V&V Disposition and Status	OK
V&V Charge Time	7.79679983

A.2 Comments