

# V&V Reference Report

## L2 ASCDS Version : 7.6.9

Observation 61151 - L2 Version 001  
Chandra X-Ray Center

L2 Processing Date : Sep 21 2006

## Contents

<b>1</b>	<b>Front</b>	<b>2</b>
<b>2</b>	<b>OBI</b>	<b>3</b>
2.1	OBI . . . . .	3
2.1.1	Images . . . . .	3
2.1.2	Bias . . . . .	3
2.1.3	Parameters . . . . .	4
2.1.4	Events . . . . .	4
2.2	Compared Parameters . . . . .	5
2.3	Aspect . . . . .	6
2.4	Star Slots . . . . .	8
2.5	FID Slots . . . . .	8
<b>A</b>	<b>Summary</b>	<b>9</b>
A.1	Status . . . . .	9
A.2	Comments . . . . .	9

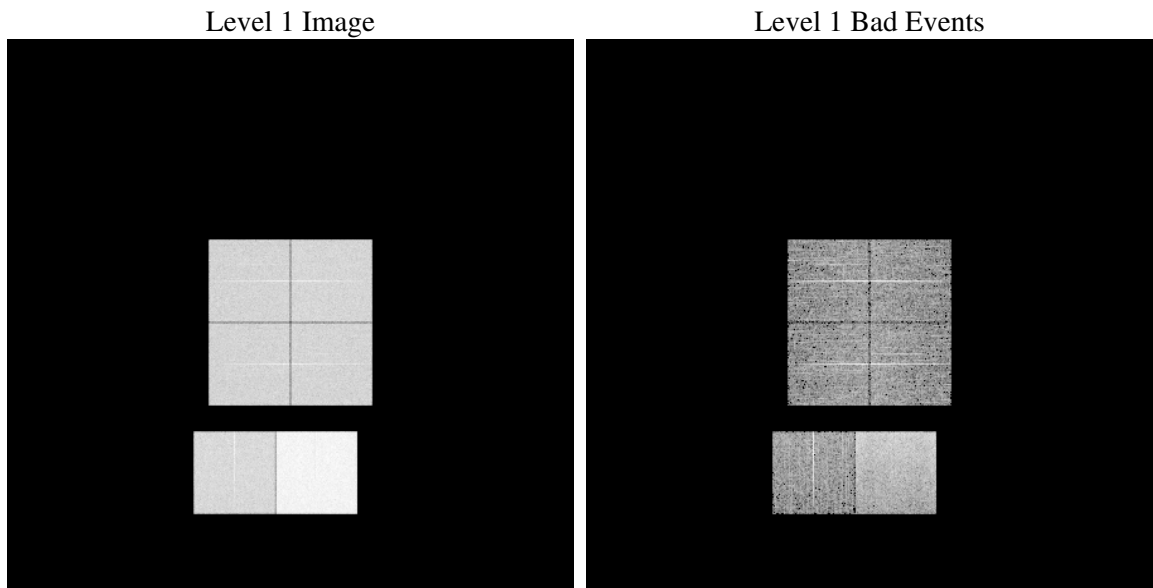
# 1 Front

seq_num	&#160
obs_id	61151
title	ACIS-012367 diagnostics
observer	CHANDRA engineering request/realtime commanding
object	&#160
dtcycle	0
cycle	P
ra_targ	0.0
dec_targ	0.0
ra_nom	284.99227078768
dec_nom	-26.972213581901
roll_nom	71.064364070798
revision	2
ontime	8454.2257549167
livetime	8347.1732578843
ontime0	3696.514954865
ontime1	3891.0161228478
ontime2	3628.5351648331
ontime3	3670.5046245158
ontime6	3991.4978280067
ontime7	8454.2257549167
l2events	1297882

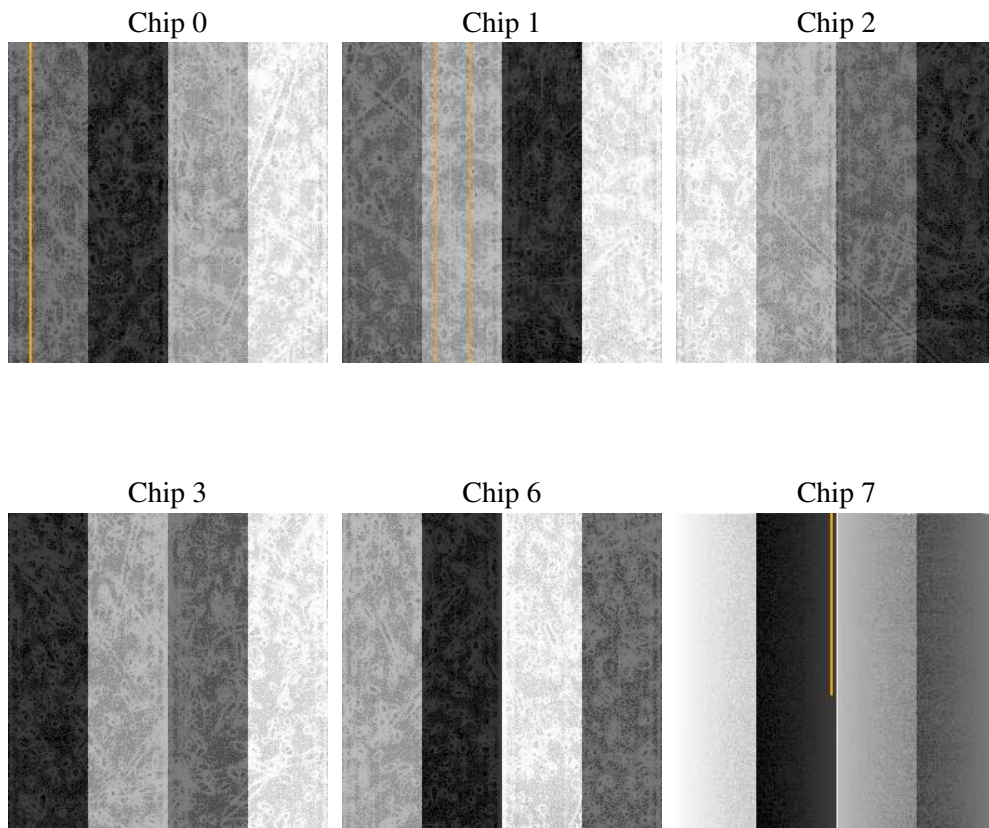
## 2 OBI

### 2.1 OBI

#### 2.1.1 Images



#### 2.1.2 Bias



### 2.1.3 Parameters

obi_num	0
ascdsver	7.6.9
caldbver	3.2.3
date	2006-09-21T11:55:34
revision	2

sched_exp_time	0.0
ontime	8455.7711363137
ontime0	3698.0192962587
ontime1	3892.4794242382
ontime2	3629.9574262202
ontime3	3672.0910459161
ontime6	3992.950956285
ontime7	8455.7711363137
l1events	1556922

### 2.1.4 Events

	ccd 0	ccd 1	ccd 2	ccd 3	ccd 6	ccd 7
level 1 events	207056	217267	207399	210032	236071	479097
rejected events	27381	26679	28043	28462	30172	61480
rejected %	13%	12%	13%	13%	12%	12%

	ccd 0	ccd 1	ccd 2	ccd 3	ccd 6	ccd 7
grade 0 events	98743	105329	99632	101639	111453	76762
	47%	48%	48%	48%	47%	16%
grade 1 events	542	547	523	518	603	197
	0%	0%	0%	0%	0%	0%
grade 2 events	31974	33463	31496	31326	35961	125402
	15%	15%	15%	14%	15%	26%
grade 3 events	11315	11935	11339	11458	12744	31104
	5%	5%	5%	5%	5%	6%
grade 4 events	11373	11985	11344	11577	12785	30886
	5%	5%	5%	5%	5%	6%
grade 5 events	1822	1904	1754	1946	2202	8144
	0%	0%	0%	0%	0%	1%
grade 6 events	26536	27876	25654	25570	33072	153724
	12%	12%	12%	12%	14%	32%
grade 7 events	24751	24228	25657	25998	27251	52878
	11%	11%	12%	12%	11%	11%

## 2.2 Compared Parameters

Parameter	Planned	Actual	Parameter	Planned	Actual
Instrument	ACIS	ACIS	Obspar format version number	6	6
Detector	ACIS-012367	ACIS-012367	Obspar file type	PREDICTED	ACTUAL
Grating	NONE	NONE	Obspar update status	NONE	UPDATED
Data mode	FAINT	FAINT	On-chip summing requested	N	N
Observation mode	SECONDARY	SECONDARY	Subarray requested	NONE	NONE
Pointing RA	0	284.9922707876832	Alternating exposures requested	N	N
Pointing Dec	0	-26.97221358190088	Primary exposure time	3.2	3.2
Pointing Roll	0.0	71.06436407079826			
SIM focus pos (mm)	-0.782348	-0.6828225247311905			
SIM defocus (mm)	0	0.8505141146731063			
SIM translation stage pos (mm)	-233.592463	250.466033080201			
SIM translation stage offset (mm)	0	-0.01005468664627074			
Observation start time	141445529.466334	141445528.44162			
Observation start date	2002-06-26T02:25:29	2002-06-26T02:25:28			
Observation end time	141467163.11722	141467162.0925			
Observation end date	2002-06-26T08:26:03	2002-06-26T08:26:02			
Read mode	TIMED	TIMED			

## 2.3 Aspect



## **2.4 Star Slots**

## **2.5 FID Slots**

## A Summary

### A.1 Status

V&V Scientist	Jen Lauer
V&V Date (YYYY-MM-DD)	2006.09.21
V&V Edition	1
V&V Disposition and Status	OK
V&V Charge Time	8.45422575

### A.2 Comments