

# V&V Reference Report

## L2 ASCDS Version : 8.4.5

Observation 61149 - L2 Version 3  
Chandra X-Ray Center

L2 Processing Date : Oct 10 2012

## Contents

<b>1</b>	<b>Front</b>	<b>2</b>
<b>2</b>	<b>OBI</b>	<b>3</b>
2.1	OBI . . . . .	3
2.1.1	Images . . . . .	3
2.1.2	Bias . . . . .	3
2.1.3	Parameters . . . . .	4
2.1.4	Events . . . . .	4
2.2	Compared Parameters . . . . .	5
2.3	Star Slots . . . . .	6
2.4	FID Slots . . . . .	6
<b>A</b>	<b>Summary</b>	<b>7</b>
A.1	Status . . . . .	7
A.2	Comments . . . . .	7

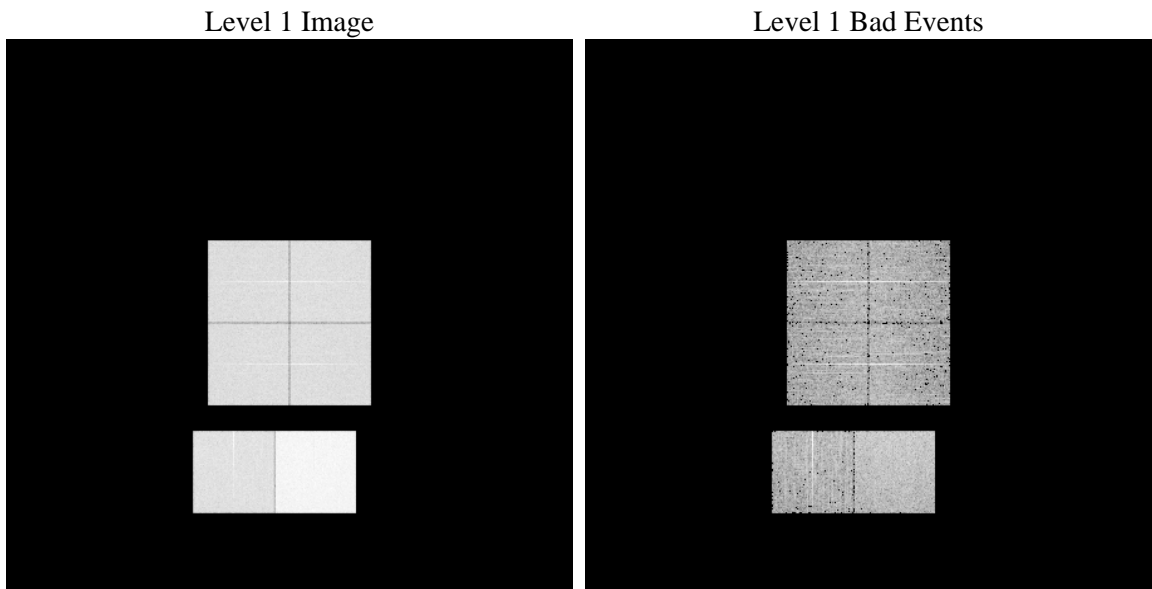
# 1 Front

seq_num	&#160	Sequence number
obs_id	61149	Observation id
title	ACIS-012367 diagnostics	Proposal title
observer	CHANDRA engineering request/realtime commanding	Principal investig
object	&#160	Source name
dtcycle	0	&#160
cycle	P	events from which exps? Prim/Second/Both
ra_targ	0.0	Observer's specified target RA [deg]
dec_targ	0.0	Observer's specified target Dec [deg]
ra_nom	151.89784219648	Nominal RA [deg]
dec_nom	-22.028539254244	Nominal Dec [deg]
roll_nom	233.17236373374	Nominal Roll [deg]
revision	3	Processing version of data
ontime	7794.6110193133	Sum of GTIs [s]
livetime	7695.9109612355	Livetime [s]
ontime0	3398.8750130832	Sum of GTIs [s]
ontime1	3552.1718126833	Sum of GTIs [s]
ontime2	3377.158182621	Sum of GTIs [s]
ontime3	3351.2295438349	Sum of GTIs [s]
ontime6	3709.889261663	Sum of GTIs [s]
ontime7	7794.6110193133	Sum of GTIs [s]
l2events	1210865	Number of level 2 events

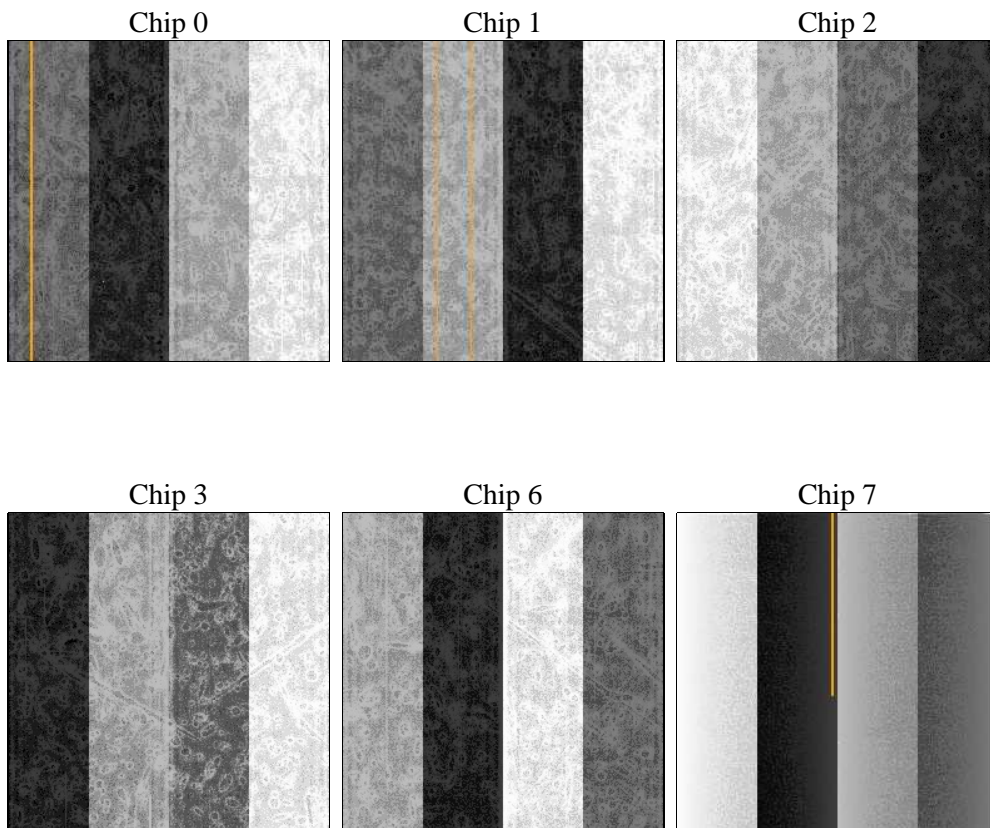
## 2 OBI

### 2.1 OBI

#### 2.1.1 Images



#### 2.1.2 Bias



### 2.1.3 Parameters

obi_num	0	Obi number	sched_exp_time	0.0	[s] Scheduled observation exposure time
ascdsver	8.4.5	Processing system revision	ontime	7794.6110193133	Sum of GTIs [s]
caldsver	4.5.2	&#160	ontime0	3398.8750130832	Sum of GTIs [s]
date	2012-10-10T07:49:41	Date and time of file creation	ontime1	3552.1718126833	Sum of GTIs [s]
revision	3	Processing version of data	ontime2	3377.158182621	Sum of GTIs [s]
			ontime3	3351.2295438349	Sum of GTIs [s]
			ontime6	3709.889261663	Sum of GTIs [s]
			ontime7	7794.6110193133	Sum of GTIs [s]
			l1events	1437298	Number of level 1 events

### 2.1.4 Events

	ccd 0	ccd 1	ccd 2	ccd 3	ccd 6	ccd 7		ccd 0	ccd 1	ccd 2	ccd 3	ccd 6	ccd 7
level 1 events	190591	198725	192006	191669	220574	443733	grade 0 events	90935	95868	92948	92866	103782	101661
rejected events	24937	24803	25173	25836	30119	42986		47%	48%	48%	48%	47%	22%
rejected %	13%	12%	13%	13%	13%	9%	grade 1 events	461	499	482	492	490	254
								0%	0%	0%	0%	0%	0%
							grade 2 events	29319	30386	29210	28880	33078	89469
								15%	15%	15%	15%	14%	20%
							grade 3 events	10530	11255	10581	10487	11744	40388
								5%	5%	5%	5%	5%	9%
							grade 4 events	10477	11152	10393	10429	11636	40652
								5%	5%	5%	5%	5%	9%
							grade 5 events	1694	1784	1473	1710	1974	8505
								0%	0%	0%	0%	0%	1%
							grade 6 events	24393	25261	23701	23171	30215	128577
								12%	12%	12%	12%	13%	28%
							grade 7 events	22782	22520	23218	23634	27655	34227
								11%	11%	12%	12%	12%	7%

## 2.2 Compared Parameters

Parameter	Planned	Actual
Instrument	ACIS	ACIS
Detector	ACIS-012367	ACIS-012367
Grating	NONE	NONE
Data mode	FAINT	FAINT
Observation mode	SECONDARY	SECONDARY
[deg] Pointing RA	0	151.8978421964762
[deg] Pointing Dec	0	-22.02853925424442
[deg] Pointing Roll	0.0	233.1723637337439
[mm] SIM focus pos	-0.782348	-0.6828225247311905
[mm] SIM defocus	0	0.8505141146731063
[mm] SIM translation stage pos	-233.592463	250.466033080201
[mm] SIM translation stage offset	0	-0.01005468664627074
[s] Observation start time (MET)	141636259.424158	141636258.39944
Observation start date	2002-06-28T07:24:19	2002-06-28T07:24:18
[s] Observation end time (MET)	141671369.775599	141671368.75087
Observation end date	2002-06-28T17:09:30	2002-06-28T17:09:28
Read mode	TIMED	TIMED

Parameter	Planned	Actual
Obspar format version number	7	7
Obspar file type	PREDICTED	ACTUAL
Obspar update status	NONE	UPDATED
On-chip summing requested	N	N
Subarray requested	NONE	NONE
Alternating exposures requested	N	N
[s] Primary exposure time	3.2	3.2

## **2.3 Star Slots**

## **2.4 FID Slots**

## A Summary

### A.1 Status

V&V Scientist	Jen Lauer
V&V Date (YYYY-MM-DD)	2012.10.19
V&V Edition	1
V&V Disposition and Status	OK
V&V Charge Time	7.7946110193133

### A.2 Comments