

V&V Reference Report

L2 ASCDS Version : 7.6.9

Observation 61149 - L2 Version 001
Chandra X-Ray Center

L2 Processing Date : Sep 21 2006

Contents

1	Front	2
2	OBI	3
2.1	OBI	3
2.1.1	Images	3
2.1.2	Bias	3
2.1.3	Parameters	4
2.1.4	Events	4
2.2	Compared Parameters	5
2.3	Aspect	6
2.4	Star Slots	8
2.5	FID Slots	8
A	Summary	9
A.1	Status	9
A.2	Comments	9

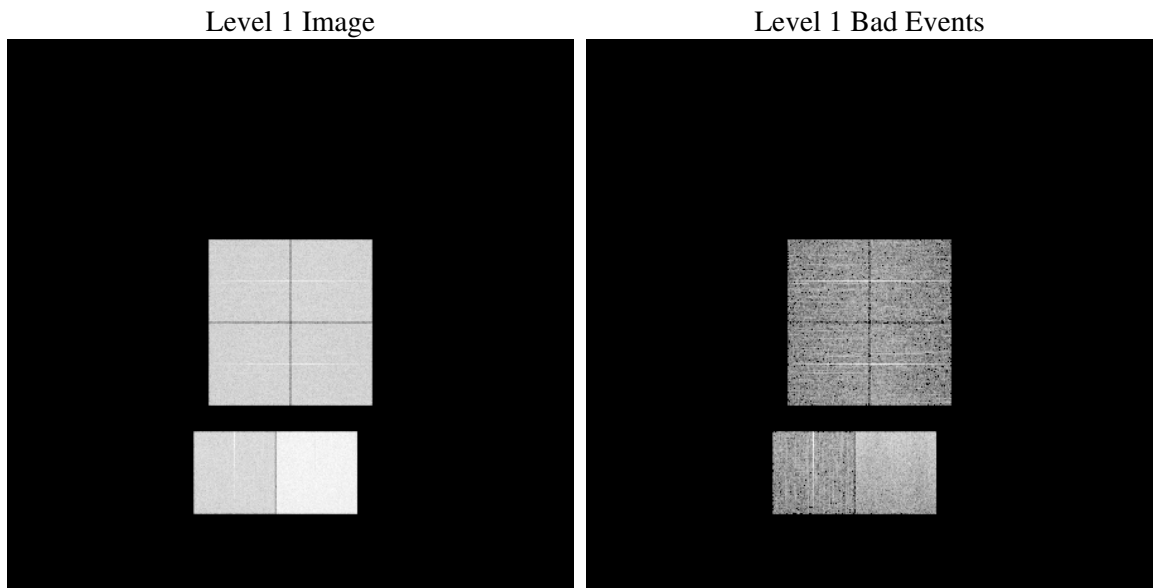
1 Front

seq_num	
obs_id	61149
title	ACIS-012367 diagnostics
observer	CHANDRA engineering request/realtime commanding
object	
dtcycle	0
cycle	P
ra_targ	0.0
dec_targ	0.0
ra_nom	151.8978421952
dec_nom	-22.028539255097
roll_nom	233.17236373425
revision	2
ontime	7794.487404108
livetime	7695.7889113204
ontime0	3399.7619011998
ontime1	3552.1302774847
ontime2	3377.1576874256
ontime3	3351.0648886263
ontime6	3710.9818449616
ontime7	7794.487404108
l2events	1198256

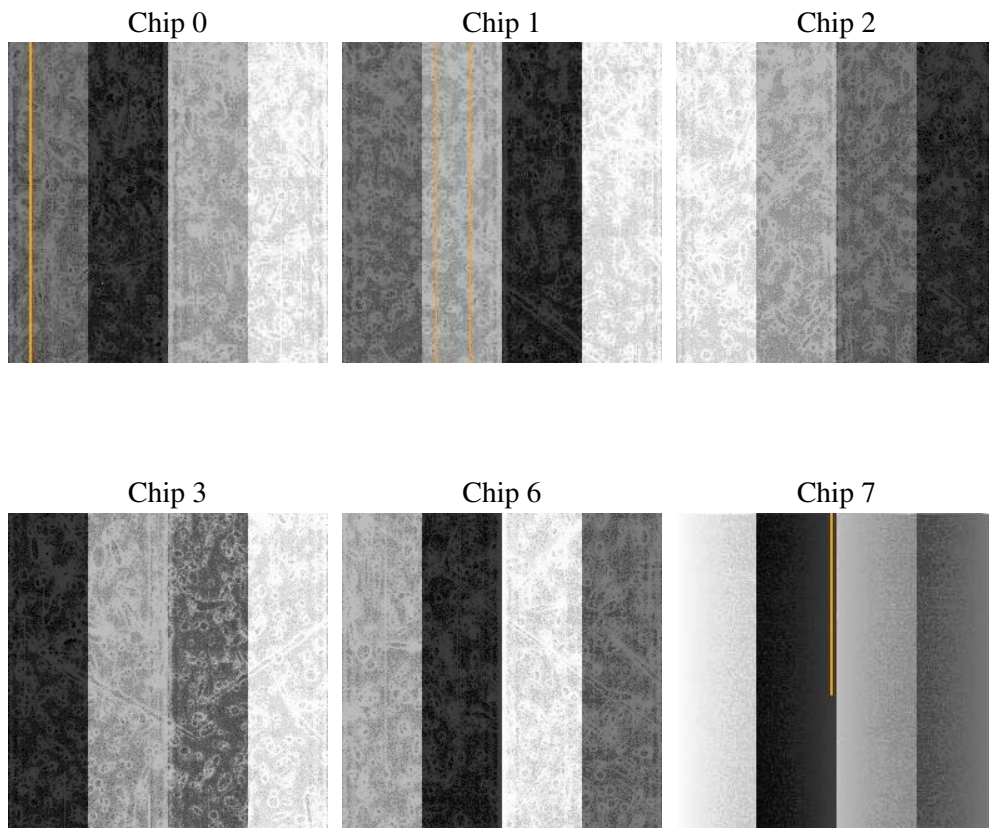
2 OBI

2.1 OBI

2.1.1 Images



2.1.2 Bias



2.1.3 Parameters

obi_num	0
ascdsver	7.6.9
caldbver	3.2.3
date	2006-09-21T12:01:43
revision	2

sched_exp_time	0.0
ontime	7794.6110193133
ontime0	3399.8444764018
ontime1	3552.1718126833
ontime2	3377.158182621
ontime3	3351.2295438349
ontime6	3710.9818449616
ontime7	7794.6110193133
l1events	1437298

2.1.4 Events

	ccd 0	ccd 1	ccd 2	ccd 3	ccd 6	ccd 7
level 1 events	190591	198725	192006	191669	220574	443733
rejected events	24937	24803	25174	25836	30119	55720
rejected %	13%	12%	13%	13%	13%	12%

	ccd 0	ccd 1	ccd 2	ccd 3	ccd 6	ccd 7
grade 0 events	90935	95868	92948	92866	103782	73113
	47%	48%	48%	48%	47%	16%
grade 1 events	461	499	482	492	490	159
	0%	0%	0%	0%	0%	0%
grade 2 events	29319	30386	29210	28880	33078	115857
	15%	15%	15%	15%	14%	26%
grade 3 events	10530	11255	10581	10487	11744	29362
	5%	5%	5%	5%	5%	6%
grade 4 events	10477	11152	10393	10429	11636	29341
	5%	5%	5%	5%	5%	6%
grade 5 events	1694	1784	1473	1710	1974	7553
	0%	0%	0%	0%	0%	1%
grade 6 events	24393	25261	23700	23171	30215	140340
	12%	12%	12%	12%	13%	31%
grade 7 events	22782	22520	23219	23634	27655	48008
	11%	11%	12%	12%	12%	10%

2.2 Compared Parameters

Parameter	Planned	Actual	Parameter	Planned	Actual
Instrument	ACIS	ACIS	Obspar format version number	6	6
Detector	ACIS-012367	ACIS-012367	Obspar file type	PREDICTED	ACTUAL
Grating	NONE	NONE	Obspar update status	NONE	UPDATED
Data mode	FAINT	FAINT	On-chip summing requested	N	N
Observation mode	SECONDARY	SECONDARY	Subarray requested	NONE	NONE
Pointing RA	0	151.8978421952032	Alternating exposures requested	N	N
Pointing Dec	0	-22.02853925509653	Primary exposure time	3.2	3.2
Pointing Roll	0.0	233.1723637342537			
SIM focus pos (mm)	-0.782348	-0.6828225247311905			
SIM defocus (mm)	0	0.8505141146731063			
SIM translation stage pos (mm)	-233.592463	250.466033080201			
SIM translation stage offset (mm)	0	-0.01005468664627074			
Observation start time	141636259.424158	141636258.39944			
Observation start date	2002-06-28T07:24:19	2002-06-28T07:24:18			
Observation end time	141671369.775599	141671368.75087			
Observation end date	2002-06-28T17:09:30	2002-06-28T17:09:28			
Read mode	TIMED	TIMED			

2.3 Aspect

2.4 Star Slots

2.5 FID Slots

A Summary

A.1 Status

V&V Scientist	Jen Lauer
V&V Date (YYYY-MM-DD)	2006.09.21
V&V Edition	1
V&V Disposition and Status	OK
V&V Charge Time	7.7944874

A.2 Comments