

V&V Reference Report

L2 ASCDS Version : 8.4.5

Observation 61136 - L2 Version 3
Chandra X-Ray Center

L2 Processing Date : Oct 10 2012

Contents

1	Front	2
2	OBI	3
2.1	OBI	3
2.1.1	Images	3
2.1.2	Bias	3
2.1.3	Parameters	4
2.1.4	Events	4
2.2	Compared Parameters	5
2.3	Star Slots	6
2.4	FID Slots	6
A	Summary	7
A.1	Status	7
A.2	Comments	7

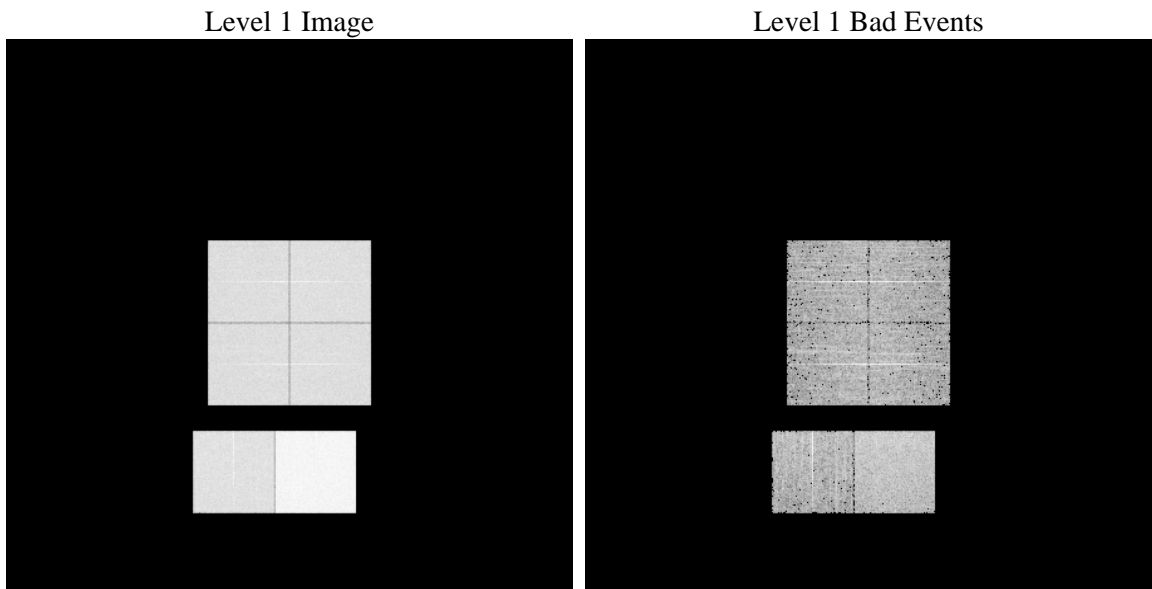
1 Front

seq_num	 	Sequence number
obs_id	61136	Observation id
title	ACIS-012367 diagnostics	Proposal title
observer	CHANDRA engineering request/realtime commanding	Principal investig
object	 	Source name
dtcycle	0	
cycle	P	events from which exps? Prim/Second/Both
ra_targ	0.0	Observer's specified target RA [deg]
dec_targ	0.0	Observer's specified target Dec [deg]
ra_nom	226.11753909069	Nominal RA [deg]
dec_nom	-78.014936300512	Nominal Dec [deg]
roll_nom	295.92396793514	Nominal Roll [deg]
revision	3	Processing version of data
ontime	7791.9999709725	Sum of GTIs [s]
livetime	7693.332975561	Livetime [s]
ontime0	3458.8169286251	Sum of GTIs [s]
ontime1	3620.8672837317	Sum of GTIs [s]
ontime2	3389.5445553064	Sum of GTIs [s]
ontime3	3431.5130880475	Sum of GTIs [s]
ontime6	3671.5523976386	Sum of GTIs [s]
ontime7	7791.9999709725	Sum of GTIs [s]
l2events	1210980	Number of level 2 events

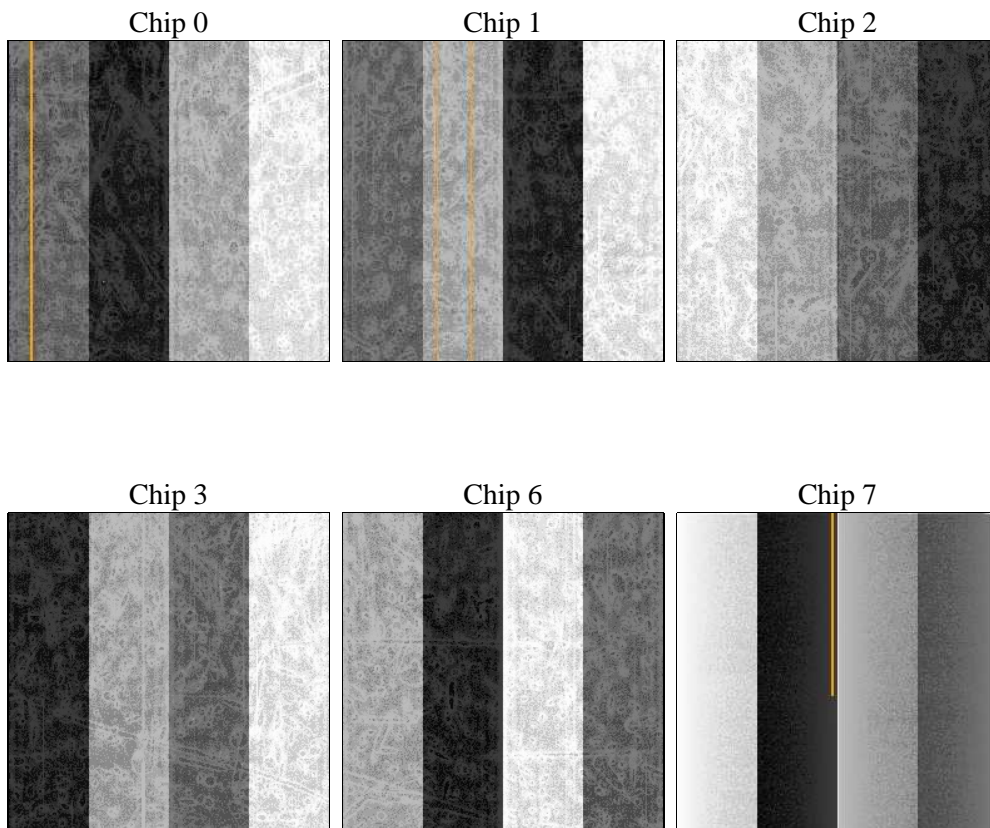
2 OBI

2.1 OBI

2.1.1 Images



2.1.2 Bias



2.1.3 Parameters

obi_num	0	Obi number	sched_exp_time	0.0	[s] Scheduled observation exposure time
ascdsver	8.4.5	Processing system revision	ontime	7791.9999709725	Sum of GTIs [s]
caldsver	4.5.2	 	ontime0	3458.8169286251	Sum of GTIs [s]
date	2012-10-10T11:14:46	Date and time of file creation	ontime1	3620.8672837317	Sum of GTIs [s]
revision	3	Processing version of data	ontime2	3389.5445553064	Sum of GTIs [s]
			ontime3	3431.5130880475	Sum of GTIs [s]
			ontime6	3671.5523976386	Sum of GTIs [s]
			ontime7	7791.9999709725	Sum of GTIs [s]
			l1events	1436699	Number of level 1 events

2.1.4 Events

	ccd 0	ccd 1	ccd 2	ccd 3	ccd 6	ccd 7		ccd 0	ccd 1	ccd 2	ccd 3	ccd 6	ccd 7
level 1 events	193270	200809	192081	194840	216425	439274	grade 0 events	92532	97152	93039	94051	102296	100367
rejected events	25328	24784	25229	26207	28803	42563		47%	48%	48%	48%	47%	22%
rejected %	13%	12%	13%	13%	13%	9%	grade 1 events	551	480	468	457	492	280
								0%	0%	0%	0%	0%	0%
							grade 2 events	29799	31256	29321	29742	32548	88055
								15%	15%	15%	15%	15%	20%
							grade 3 events	10611	11023	10375	10714	11688	40160
								5%	5%	5%	5%	5%	9%
							grade 4 events	10782	11132	10558	10762	11786	40084
								5%	5%	5%	5%	5%	9%
							grade 5 events	1703	1730	1641	1853	2043	8369
								0%	0%	0%	0%	0%	1%
							grade 6 events	24377	25585	23559	23364	29304	128203
								12%	12%	12%	11%	13%	29%
							grade 7 events	22915	22451	23120	23897	26268	33756
								11%	11%	12%	12%	12%	7%

2.2 Compared Parameters

Parameter	Planned	Actual	Parameter	Planned	Actual
Instrument	ACIS	ACIS	Obspar format version number	7	7
Detector	ACIS-012367	ACIS-012367	Obspar file type	PREDICTED	ACTUAL
Grating	NONE	NONE	Obspar update status	NONE	UPDATED
Data mode	FAINT	FAINT	On-chip summing requested	N	N
Observation mode	SECONDARY	SECONDARY	Subarray requested	NONE	NONE
[deg] Pointing RA	0	226.1175390906905	Alternating exposures requested	N	N
[deg] Pointing Dec	0	-78.01493630051212	[s] Primary exposure time	3.2	3.2
[deg] Pointing Roll	0.0	295.9239679351351			
[mm] SIM focus pos	-0.782348	-0.6828225247311905			
[mm] SIM defocus	0	0.8505141146731063			
[mm] SIM translation stage pos	-233.592463	250.466033080201			
[mm] SIM translation stage offset	0	-0.01005468664627074			
[s] Observation start time (MET)	142321672.852257	142321671.82754			
Observation start date	2002-07-06T05:47:53	2002-07-06T05:47:51			
[s] Observation end time (MET)	142333263.552732	142333262.52802			
Observation end date	2002-07-06T09:01:04	2002-07-06T09:01:02			
Read mode	TIMED	TIMED			

2.3 Star Slots

2.4 FID Slots

A Summary

A.1 Status

V&V Scientist	Jen Lauer
V&V Date (YYYY-MM-DD)	2012.10.19
V&V Edition	1
V&V Disposition and Status	OK
V&V Charge Time	7.7919999709725

A.2 Comments