

V&V Reference Report

L2 ASCDS Version : 7.6.9

Observation 61136 - L2 Version 001
Chandra X-Ray Center

L2 Processing Date : Sep 23 2006

Contents

1	Front	2
2	OBI	3
2.1	OBI	3
2.1.1	Images	3
2.1.2	Bias	3
2.1.3	Parameters	4
2.1.4	Events	4
2.2	Compared Parameters	5
2.3	Aspect	6
2.4	Star Slots	8
2.5	FID Slots	8
A	Summary	9
A.1	Status	9
A.2	Comments	9

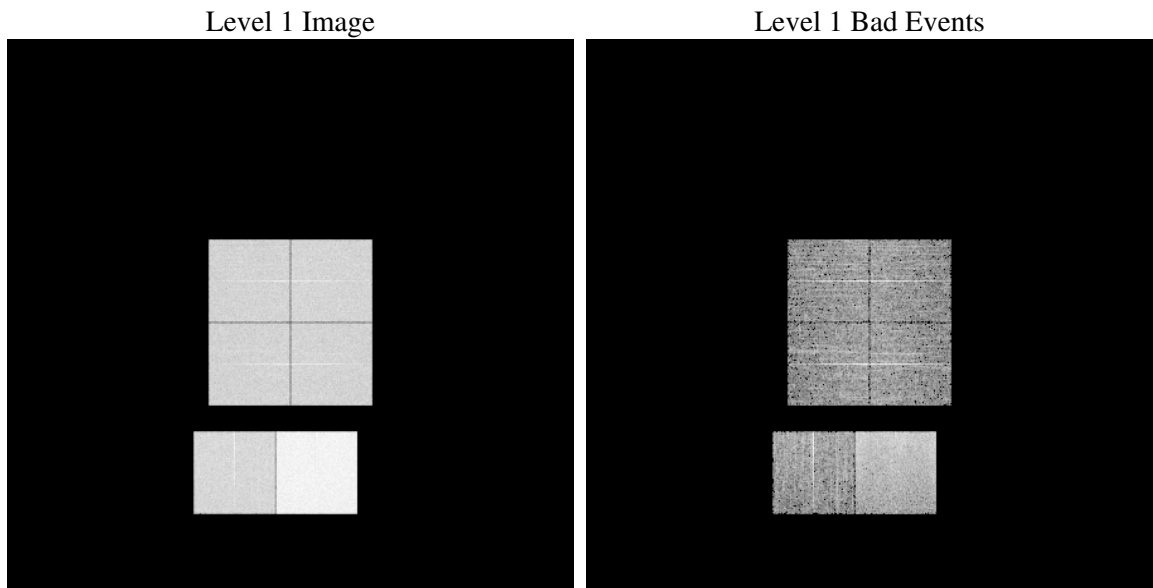
1 Front

seq_num	
obs_id	61136
title	ACIS-012367 diagnostics
observer	CHANDRA engineering request/realtime commanding
object	
dtcycle	0
cycle	P
ra_targ	0.0
dec_targ	0.0
ra_nom	226.1175391584
dec_nom	-78.014936299021
roll_nom	295.923968002
revision	2
ontime	7791.9999709725
livetime	7693.332975561
ontime0	3458.8169286251
ontime1	3620.8672837317
ontime2	3387.9445553124
ontime3	3429.9130880535
ontime6	3669.9523976445
ontime7	7791.9999709725
l2events	1197338

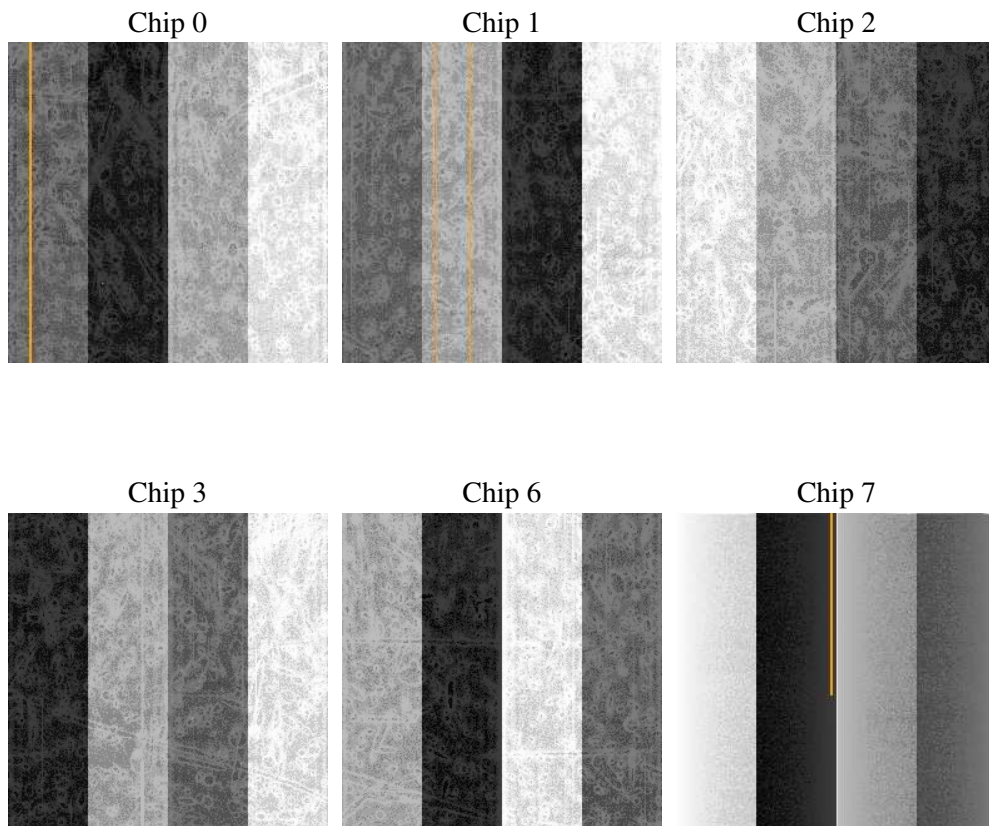
2 OBI

2.1 OBI

2.1.1 Images



2.1.2 Bias



2.1.3 Parameters

obi_num	0
ascdsver	7.6.9
caldbver	3.2.3
date	2006-09-23T03:17:41
revision	2

sched_exp_time	0.0
ontime	7794.6063897312
ontime0	3461.4233473837
ontime1	3623.4737024903
ontime2	3390.121374011
ontime3	3432.2540667653
ontime6	3672.0881763697
ontime7	7794.6063897312
l1events	1436699

2.1.4 Events

	ccd 0	ccd 1	ccd 2	ccd 3	ccd 6	ccd 7
level 1 events	193270	200809	192081	194840	216425	439274
rejected events	25304	24815	25368	26358	28960	55898
rejected %	13%	12%	13%	13%	13%	12%

	ccd 0	ccd 1	ccd 2	ccd 3	ccd 6	ccd 7
grade 0 events	92533	97157	93041	94056	102299	71112
	47%	48%	48%	48%	47%	16%
grade 1 events	551	481	469	457	492	185
	0%	0%	0%	0%	0%	0%
grade 2 events	29798	31250	29319	29737	32545	115077
	15%	15%	15%	15%	15%	26%
grade 3 events	10612	11025	10375	10715	11690	28859
	5%	5%	5%	5%	5%	6%
grade 4 events	10784	11132	10559	10763	11787	28618
	5%	5%	5%	5%	5%	6%
grade 5 events	1703	1731	1641	1854	2042	7510
	0%	0%	0%	0%	0%	1%
grade 6 events	24374	25583	23557	23363	29304	139869
	12%	12%	12%	11%	13%	31%
grade 7 events	22915	22450	23120	23895	26266	48044
	11%	11%	12%	12%	12%	10%

2.2 Compared Parameters

Parameter	Planned	Actual	Parameter	Planned	Actual
Instrument	ACIS	ACIS	Obspar format version number	6	6
Detector	ACIS-012367	ACIS-012367	Obspar file type	PREDICTED	ACTUAL
Grating	NONE	NONE	Obspar update status	NONE	UPDATED
Data mode	FAINT	FAINT	On-chip summing requested	N	N
Observation mode	SECONDARY	SECONDARY	Subarray requested	NONE	NONE
Pointing RA	0	226.1175391584007	Alternating exposures requested	N	N
Pointing Dec	0	-78.01493629902085	Primary exposure time	3.2	3.2
Pointing Roll	0.0	295.9239680020028			
SIM focus pos (mm)	-0.782348	-0.6828225247311905			
SIM defocus (mm)	0	0.8505141146731063			
SIM translation stage pos (mm)	-233.592463	250.466033080201			
SIM translation stage offset (mm)	0	-0.01005468664627074			
Observation start time	142321672.852257	142321671.82754			
Observation start date	2002-07-06T05:47:53	2002-07-06T05:47:51			
Observation end time	142333263.552732	142333262.52802			
Observation end date	2002-07-06T09:01:04	2002-07-06T09:01:02			
Read mode	TIMED	TIMED			

2.3 Aspect

2.4 Star Slots

2.5 FID Slots

A Summary

A.1 Status

V&V Scientist	Beth Sundheim
V&V Date (YYYY-MM-DD)	2006.09.24
V&V Edition	1
V&V Disposition and Status	OK
V&V Charge Time	7.79199997

A.2 Comments