

# V&V Reference Report

## L2 ASCDS Version : 8.4.5

Observation 61128 - L2 Version 3  
Chandra X-Ray Center

L2 Processing Date : Oct 11 2012

## Contents

<b>1</b>	<b>Front</b>	<b>2</b>
<b>2</b>	<b>OBI</b>	<b>3</b>
2.1	OBI . . . . .	3
2.1.1	Images . . . . .	3
2.1.2	Bias . . . . .	3
2.1.3	Parameters . . . . .	4
2.1.4	Events . . . . .	4
2.2	Compared Parameters . . . . .	5
2.3	Star Slots . . . . .	6
2.4	FID Slots . . . . .	6
<b>A</b>	<b>Summary</b>	<b>7</b>
A.1	Status . . . . .	7
A.2	Comments . . . . .	7

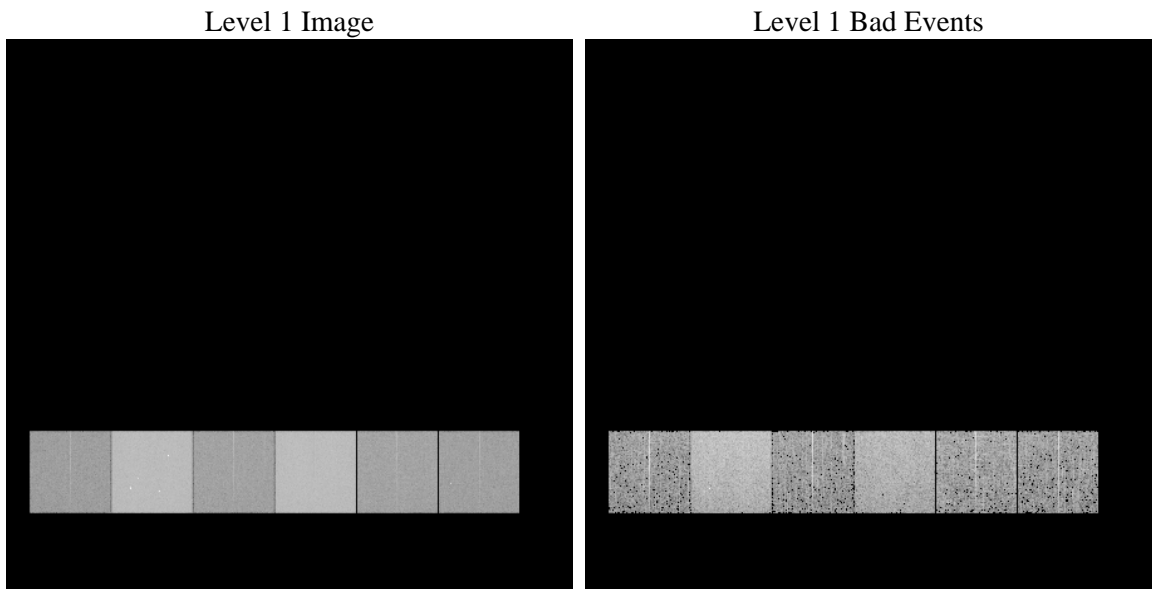
# 1 Front

seq_num	&#160	Sequence number
obs_id	61128	Observation id
title	ACIS-456789 diagnostics	Proposal title
observer	CHANDRA engineering request/realtime commanding	Principal investig
object	&#160	Source name
dtcycle	0	&#160
cycle	P	events from which exps? Prim/Second/Both
ra_targ	0.0	Observer's specified target RA [deg]
dec_targ	0.0	Observer's specified target Dec [deg]
ra_nom	163.69736078045	Nominal RA [deg]
dec_nom	-20.828519428424	Nominal Dec [deg]
roll_nom	232.23903384491	Nominal Roll [deg]
revision	3	Processing version of data
ontime	7294.8973240256	Sum of GTIs [s]
livetime	7202.524941649	Livetime [s]
ontime4	2595.5964401662	Sum of GTIs [s]
ontime5	7790.8047761917	Sum of GTIs [s]
ontime6	2796.499650389	Sum of GTIs [s]
ontime7	7294.8973240256	Sum of GTIs [s]
ontime8	2898.1258356273	Sum of GTIs [s]
ontime9	2708.8685102165	Sum of GTIs [s]
l2events	1210224	Number of level 2 events

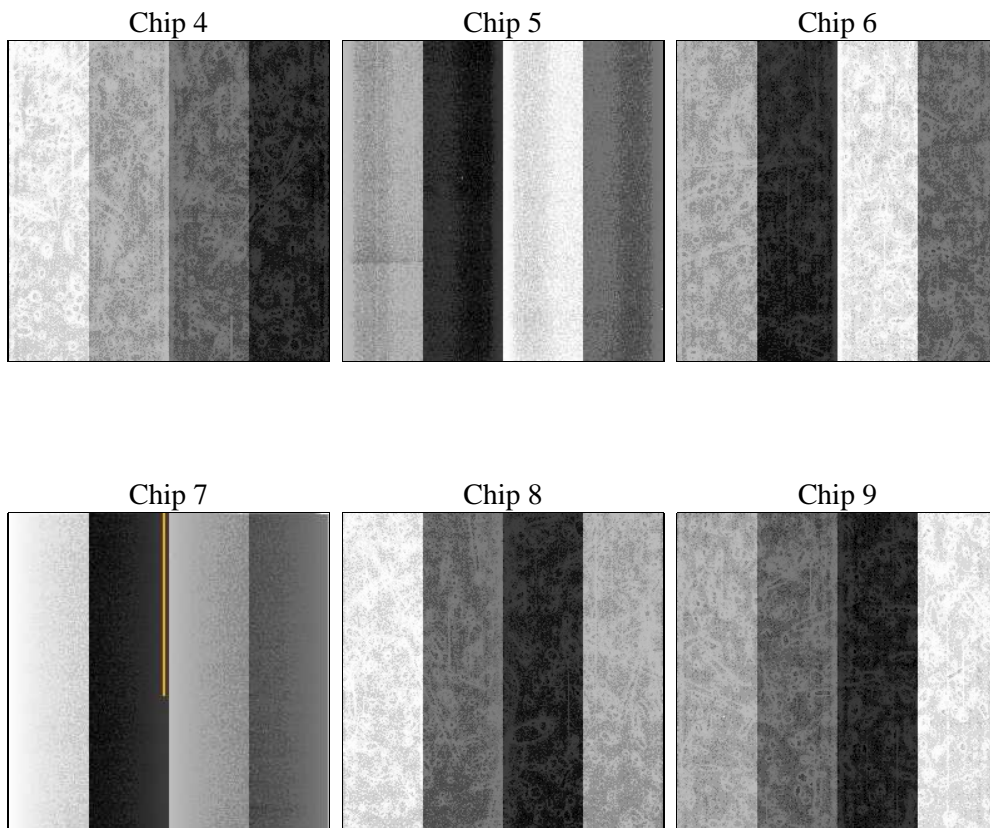
## 2 OBI

### 2.1 OBI

#### 2.1.1 Images



#### 2.1.2 Bias



### 2.1.3 Parameters

obi_num	0	Obi number	sched_exp_time	0.0	[s] Scheduled observation exposure time
ascdsver	8.4.5	Processing system revision	ontime	7294.8973240256	Sum of GTIs [s]
caldbver	4.5.2	&#160	ontime4	2595.5964401662	Sum of GTIs [s]
date	2012-10-11T23:54:38	Date and time of file creation	ontime5	7790.8047761917	Sum of GTIs [s]
revision	3	Processing version of data	ontime6	2796.499650389	Sum of GTIs [s]
			ontime7	7294.8973240256	Sum of GTIs [s]
			ontime8	2898.1258356273	Sum of GTIs [s]
			ontime9	2708.8685102165	Sum of GTIs [s]
			l1events	1442553	Number of level 1 events

### 2.1.4 Events

	ccd 4	ccd 5	ccd 6	ccd 7	ccd 8	ccd 9		ccd 4	ccd 5	ccd 6	ccd 7	ccd 8	ccd 9
level 1 events	141802	402710	164452	408665	172494	152430	grade 0 events	68285	89152	78042	93498	81459	72197
rejected events	20704	52263	21515	39574	24559	20764		48%	22%	47%	22%	47%	47%
rejected %	14%	12%	13%	9%	14%	13%	grade 1 events	348	410	378	269	396	392
								0%	0%	0%	0%	0%	0%
							grade 2 events	21471	120586	24976	81984	26330	23180
								15%	29%	15%	20%	15%	15%
							grade 3 events	7509	23285	8770	37568	9329	8108
								5%	5%	5%	9%	5%	5%
							grade 4 events	7501	22940	8762	37002	9424	8089
								5%	5%	5%	9%	5%	5%
							grade 5 events	1385	9480	1468	7840	1831	1502
								0%	2%	0%	1%	1%	0%
							grade 6 events	16332	94484	22387	119039	21564	20092
								11%	23%	13%	29%	12%	13%
							grade 7 events	18971	42373	19669	31465	22161	18870
								13%	10%	11%	7%	12%	12%

## 2.2 Compared Parameters

Parameter	Planned	Actual	Parameter	Planned	Actual
Instrument	ACIS	ACIS	Obspar format version number	7	7
Detector	ACIS-456789	ACIS-456789	Obspar file type	PREDICTED	ACTUAL
Grating	NONE	NONE	Obspar update status	NONE	UPDATED
Data mode	FAINT	FAINT	On-chip summing requested	N	N
Observation mode	SECONDARY	SECONDARY	Subarray requested	NONE	NONE
[deg] Pointing RA	0	163.6973607804468	Alternating exposures requested	N	N
[deg] Pointing Dec	0	-20.82851942842358	[s] Primary exposure time	0.000000	3.2
[deg] Pointing Roll	0.0	232.2390338449064			
[mm] SIM focus pos	-0.684267	-0.6828225247311905			
[mm] SIM defocus	0	0.8505141146731063			
[mm] SIM translation stage pos	-190.132523	250.466033080201			
[mm] SIM translation stage offset	0	-0.01005468664627074			
[s] Observation start time (MET)	143007094.48	143007093.45568			
Observation start date	2002-07-14T04:11:34	2002-07-14T04:11:33			
[s] Observation end time (MET)	143043285.182	143043284.15716			
Observation end date	2002-07-14T14:14:45	2002-07-14T14:14:44			
Read mode	TIMED	TIMED			

## **2.3 Star Slots**

## **2.4 FID Slots**

## A Summary

### A.1 Status

V&V Scientist	Jen Lauer
V&V Date (YYYY-MM-DD)	2012.10.22
V&V Edition	1
V&V Disposition and Status	OK
V&V Charge Time	7.2948973240256

### A.2 Comments