

# V&V Reference Report

## L2 ASCDS Version : 7.6.9

Observation 61107 - L2 Version 001  
Chandra X-Ray Center

L2 Processing Date : Sep 26 2006

## Contents

<b>1</b>	<b>Front</b>	<b>2</b>
<b>2</b>	<b>OBI</b>	<b>3</b>
2.1	OBI . . . . .	3
2.1.1	Images . . . . .	3
2.1.2	Bias . . . . .	3
2.1.3	Parameters . . . . .	4
2.1.4	Events . . . . .	4
2.2	Compared Parameters . . . . .	5
2.3	Aspect . . . . .	6
2.4	Star Slots . . . . .	8
2.5	FID Slots . . . . .	8
<b>A</b>	<b>Summary</b>	<b>9</b>
A.1	Status . . . . .	9
A.2	Comments . . . . .	9

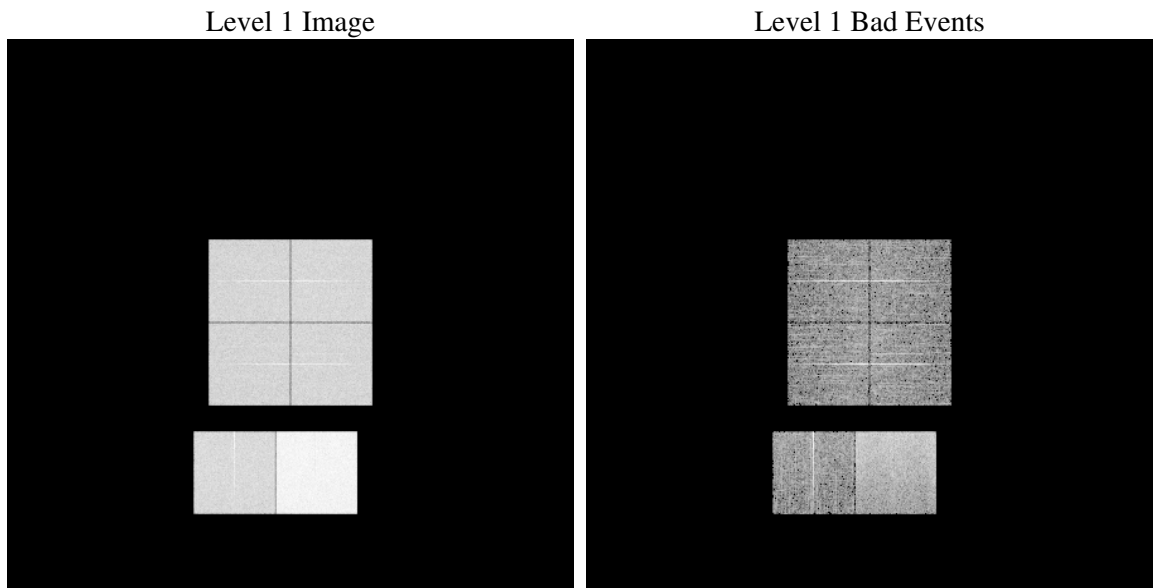
# 1 Front

seq_num	&#160
obs_id	61107
title	ACIS-012367 diagnostics
observer	CHANDRA engineering request/realtime commanding
object	&#160
dtcycle	0
cycle	P
ra_targ	0.0
dec_targ	0.0
ra_nom	293.03882242538
dec_nom	-42.996452210044
roll_nom	334.3016343554
revision	2
ontime	8460.7999684811
livetime	8353.664224798
ontime0	3875.1487740576
ontime1	4017.4241167009
ontime2	3696.9755773246
ontime3	3832.6860221624
ontime6	4130.8578249514
ontime7	8460.7999684811
l2events	1300626

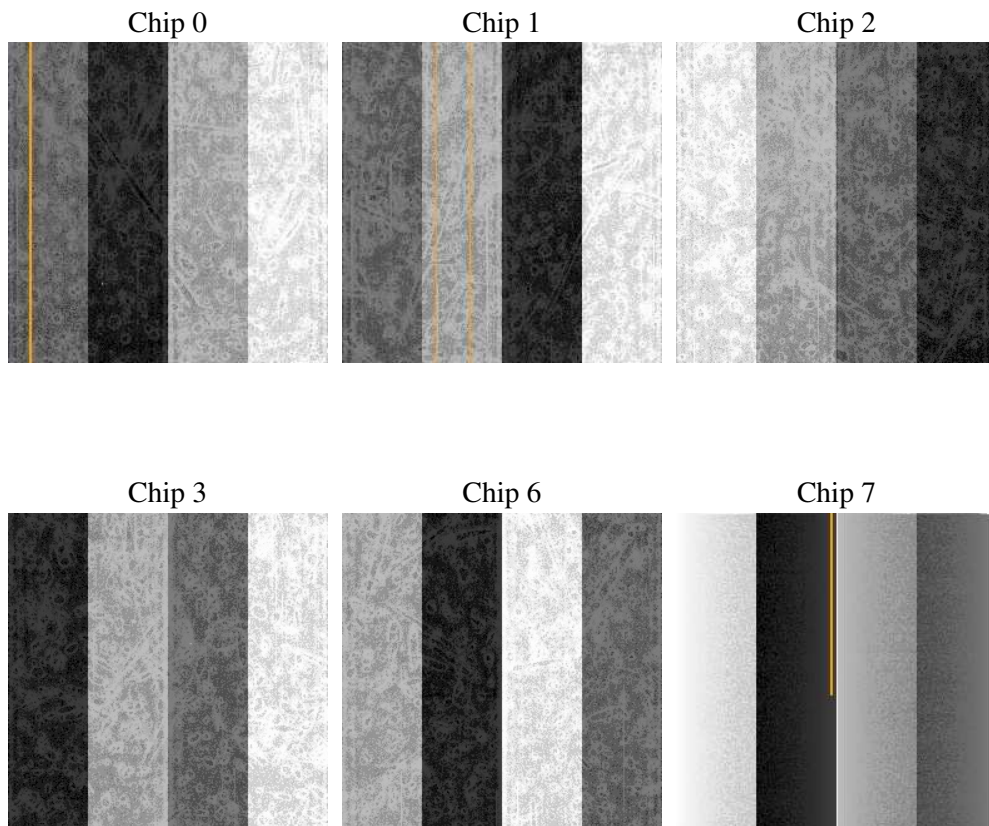
## 2 OBI

### 2.1 OBI

#### 2.1.1 Images



#### 2.1.2 Bias



### 2.1.3 Parameters

obi_num	0
ascdsver	7.6.9
caldbver	3.2.3
date	2006-09-26T21:13:27
revision	2

sched_exp_time	0.0
ontime	8462.2556777596
ontime0	3876.2745040059
ontime1	4018.8798259795
ontime2	3698.0192272663
ontime3	3834.141731441
ontime6	4132.31353423
ontime7	8462.2556777596
l1events	1556165

### 2.1.4 Events

	ccd 0	ccd 1	ccd 2	ccd 3	ccd 6	ccd 7
level 1 events	211973	219585	206702	213865	236573	467467
rejected events	26477	26200	27641	28246	30478	59575
rejected %	12%	11%	13%	13%	12%	12%

	ccd 0	ccd 1	ccd 2	ccd 3	ccd 6	ccd 7
grade 0 events	101730	105917	99002	103333	111851	72856
	47%	48%	47%	48%	47%	15%
grade 1 events	528	511	449	554	504	167
	0%	0%	0%	0%	0%	0%
grade 2 events	33212	34778	31953	33053	36136	124927
	15%	15%	15%	15%	15%	26%
grade 3 events	11691	12185	11042	11445	12608	30017
	5%	5%	5%	5%	5%	6%
grade 4 events	11666	12197	11043	11612	12412	29222
	5%	5%	5%	5%	5%	6%
grade 5 events	1769	1988	1746	1879	2201	7717
	0%	0%	0%	0%	0%	1%
grade 6 events	27197	28308	26021	26176	33088	150870
	12%	12%	12%	12%	13%	32%
grade 7 events	24180	23701	25446	25813	27773	51691
	11%	10%	12%	12%	11%	11%

## 2.2 Compared Parameters

Parameter	Planned	Actual	Parameter	Planned	Actual
Instrument	ACIS	ACIS	Obspar format version number	6	6
Detector	ACIS-012367	ACIS-012367	Obspar file type	PREDICTED	ACTUAL
Grating	NONE	NONE	Obspar update status	NONE	UPDATED
Data mode	FAINT	FAINT	On-chip summing requested	N	N
Observation mode	SECONDARY	SECONDARY	Subarray requested	NONE	NONE
Pointing RA	0	293.0388224253845	Alternating exposures requested	N	N
Pointing Dec	0	-42.99645221004415	Primary exposure time	3.2	3.2
Pointing Roll	0.0	334.3016343554008			
SIM focus pos (mm)	-0.782348	-0.7809083437167272			
SIM defocus (mm)	0	0.7524282956875696			
SIM translation stage pos (mm)	-233.592463	250.466033080201			
SIM translation stage offset (mm)	0	-0.01005468664627074			
Observation start time	143960824.219589	143960823.19487			
Observation start date	2002-07-25T05:07:04	2002-07-25T05:07:03			
Observation end time	143982133.970466	143982132.94575			
Observation end date	2002-07-25T11:02:14	2002-07-25T11:02:12			
Read mode	TIMED	TIMED			

## 2.3 Aspect



## **2.4 Star Slots**

## **2.5 FID Slots**



# A Summary

## A.1 Status

V&V Scientist	Jen Lauer
V&V Date (YYYY-MM-DD)	2006.09.27
V&V Edition	1
V&V Disposition and Status	OK
V&V Charge Time	8.46079996

## A.2 Comments

The ACIS focal plane temperature was above calibration limits for the entire observation, and decreased by more than two degrees over the course of the observation.