

# V&V Reference Report

## L2 ASCDS Version : 7.6.9

Observation 61081 - L2 Version 001  
Chandra X-Ray Center

L2 Processing Date : Sep 28 2006

## Contents

<b>1</b>	<b>Front</b>	<b>2</b>
<b>2</b>	<b>OBI</b>	<b>3</b>
2.1	OBI . . . . .	3
2.1.1	Images . . . . .	3
2.1.2	Bias . . . . .	3
2.1.3	Parameters . . . . .	4
2.1.4	Events . . . . .	4
2.2	Compared Parameters . . . . .	5
2.3	Aspect . . . . .	6
2.4	Star Slots . . . . .	8
2.5	FID Slots . . . . .	8
<b>A</b>	<b>Summary</b>	<b>9</b>
A.1	Status . . . . .	9
A.2	Comments . . . . .	9

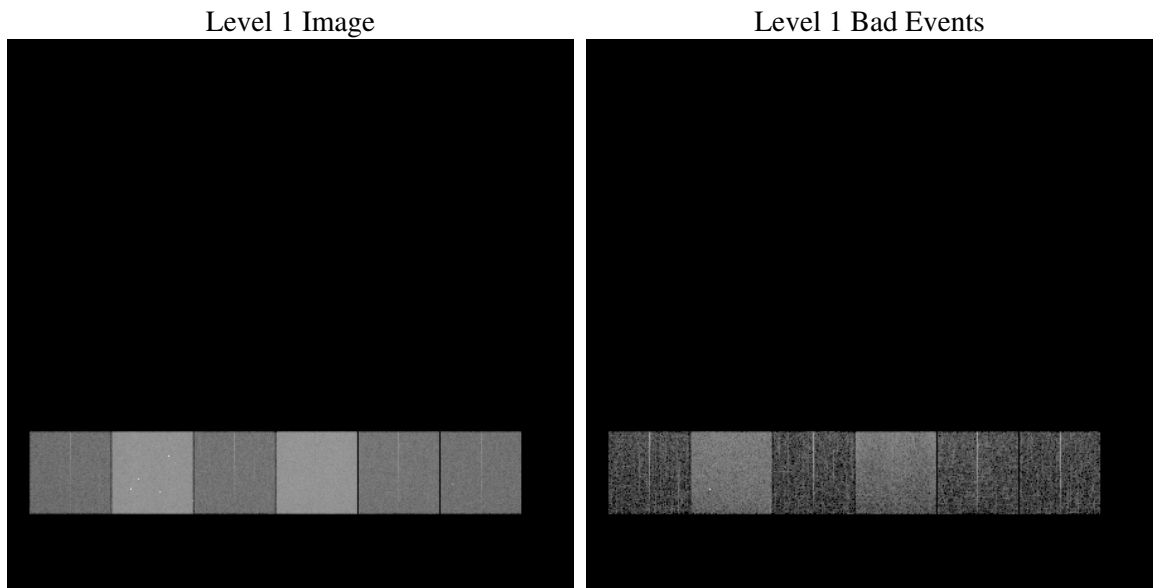
# 1 Front

seq_num	&#160
obs_id	61081
title	ACIS-456789 diagnostics
observer	CHANDRA engineering request/realtime commanding
object	&#160
dtcycle	0
cycle	P
ra_targ	0.0
dec_targ	0.0
ra_nom	223.77210341865
dec_nom	-43.799317763914
roll_nom	251.46010285996
revision	2
ontime	7438.7764603794
livetime	7344.5821937446
ontime4	2694.2618302107
ontime5	7788.7999709845
ontime6	2901.6472102404
ontime7	7438.7764603794
ontime8	2956.8264616728
ontime9	2823.7394492328
l2events	1184025

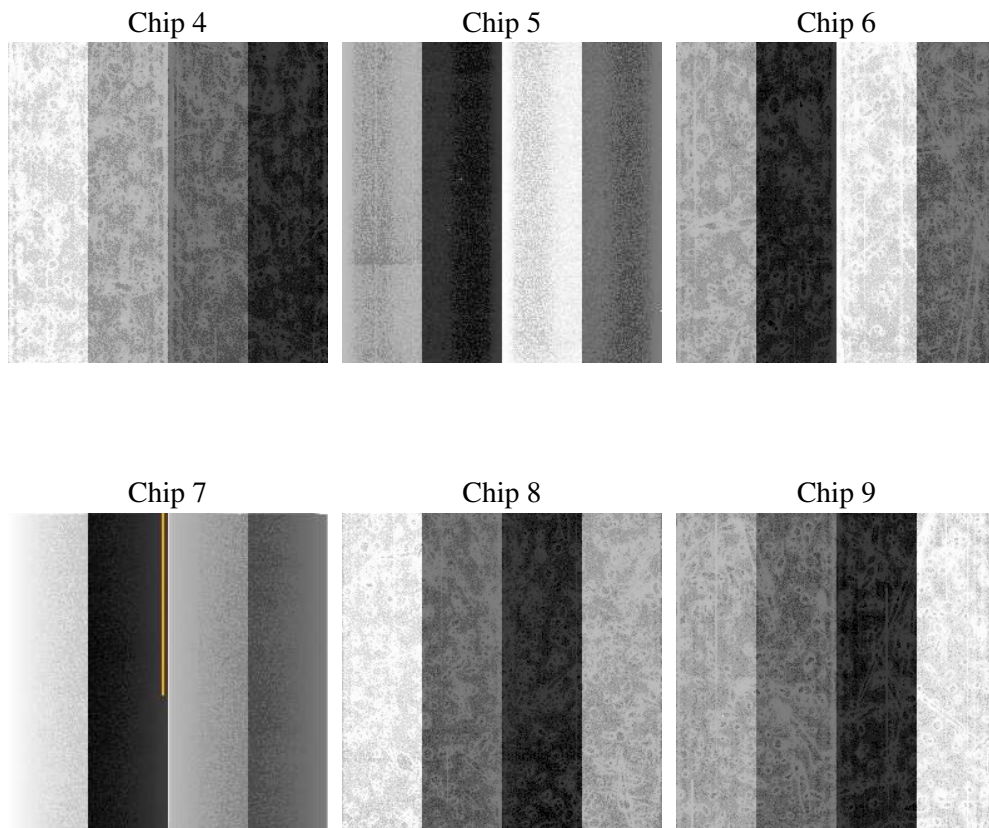
## 2 OBI

### 2.1 OBI

#### 2.1.1 Images



#### 2.1.2 Bias



### 2.1.3 Parameters

obi_num	1
ascdsver	7.6.9
caldsver	3.2.3
date	2006-09-28T19:17:14
revision	2

sched_exp_time	0.0
ontime	7441.3420704007
ontime4	2696.5421446264
ontime5	7791.3655810058
ontime6	2903.9685646594
ontime7	7441.3420704007
ontime8	2959.065736115
ontime9	2826.1839236617
l1events	1436929

### 2.1.4 Events

	ccd 4	ccd 5	ccd 6	ccd 7	ccd 8	ccd 9
level 1 events	144603	393208	164619	408335	171098	155066
rejected events	20617	62665	21232	50445	23493	20261
rejected %	14%	15%	12%	12%	13%	13%

	ccd 4	ccd 5	ccd 6	ccd 7	ccd 8	ccd 9
grade 0 events	71962	41432	78398	68213	81433	74553
	49%	10%	47%	16%	47%	48%
grade 1 events	489	111	402	158	430	415
	0%	0%	0%	0%	0%	0%
grade 2 events	19983	157742	24842	105286	25720	23271
	13%	40%	15%	25%	15%	15%
grade 3 events	8221	11226	8931	27464	9423	8512
	5%	2%	5%	6%	5%	5%
grade 4 events	8204	10871	8760	27539	9468	8666
	5%	2%	5%	6%	5%	5%
grade 5 events	1350	7381	1557	6859	1690	1487
	0%	1%	0%	1%	0%	0%
grade 6 events	15762	109435	22603	129518	21707	19971
	10%	27%	13%	31%	12%	12%
grade 7 events	18632	55010	19126	43298	21227	18191
	12%	13%	11%	10%	12%	11%

## 2.2 Compared Parameters

Parameter	Planned	Actual	Parameter	Planned	Actual
Instrument	ACIS	ACIS	Obspar format version number	6	6
Detector	ACIS-456789	ACIS-456789	Obspar file type	PREDICTED	ACTUAL
Grating	NONE	NONE	Obspar update status	NONE	UPDATED
Data mode	FAINT	FAINT	On-chip summing requested	N	N
Observation mode	SECONDARY	SECONDARY	Subarray requested	NONE	NONE
Pointing RA	0	223.7721034186508	Alternating exposures requested	N	N
Pointing Dec	0	-43.79931776391376	Primary exposure time	0.000000	3.2
Pointing Roll	0.0	251.4601028599591			
SIM focus pos (mm)	-0.684267	-0.6828225247311905			
SIM defocus (mm)	0	0.8505141146731063			
SIM translation stage pos (mm)	-190.132523	250.4635187648994			
SIM translation stage offset (mm)	0	-0.007540371344731511			
Observation start time	145984057.452867	145984056.42815			
Observation start date	2002-08-17T15:07:37	2002-08-17T15:07:36			
Observation end time	146015473.704163	146015472.67944			
Observation end date	2002-08-17T23:51:14	2002-08-17T23:51:12			
Read mode	TIMED	TIMED			

## 2.3 Aspect



## **2.4 Star Slots**

## **2.5 FID Slots**



## A Summary

### A.1 Status

V&V Scientist	Jen Lauer
V&V Date (YYYY-MM-DD)	2006.09.29
V&V Edition	1
V&V Disposition and Status	OK
V&V Charge Time	7.43877646

### A.2 Comments