

V&V Reference Report

L2 ASCDS Version : 8.4.5

Observation 61073 - L2 Version 3
Chandra X-Ray Center

L2 Processing Date : Oct 14 2012

Contents

1	Front	2
2	OBI	3
2.1	OBI	3
2.1.1	Images	3
2.1.2	Bias	3
2.1.3	Parameters	4
2.1.4	Events	4
2.2	Compared Parameters	5
2.3	Star Slots	6
2.4	FID Slots	6
A	Summary	7
A.1	Status	7
A.2	Comments	7

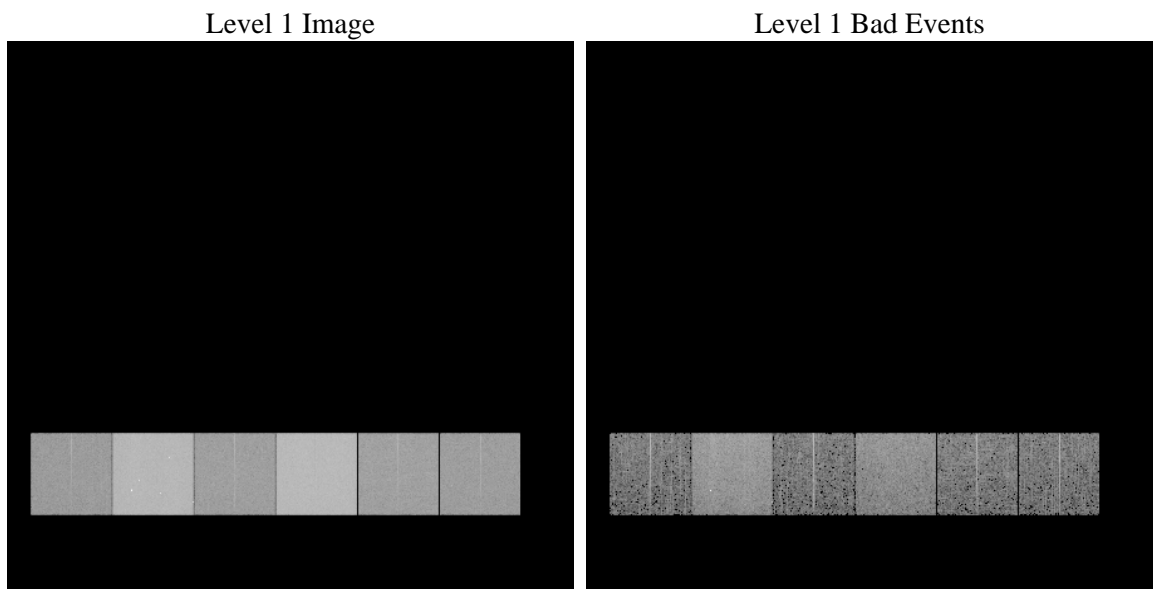
1 Front

seq_num	 	Sequence number
obs_id	61073	Observation id
title	ACIS-456789 diagnostics	Proposal title
observer	CHANDRA engineering request/realtime commanding	Principal investig
object	 	Source name
dtcycle	0	
cycle	P	events from which exps? Prim/Second/Both
ra_targ	0.0	Observer's specified target RA [deg]
dec_targ	0.0	Observer's specified target Dec [deg]
ra_nom	344.97083325814	Nominal RA [deg]
dec_nom	11.798240827211	Nominal Dec [deg]
roll_nom	150.72641661665	Nominal Roll [deg]
revision	3	Processing version of data
ontime	8240.4586764574	Sum of GTIs [s]
livetime	8136.1130268876	Livetime [s]
ontime4	2965.5480952859	Sum of GTIs [s]
ontime5	8444.5984740555	Sum of GTIs [s]
ontime6	3197.4074724019	Sum of GTIs [s]
ontime7	8240.4586764574	Sum of GTIs [s]
ontime8	3322.0618169606	Sum of GTIs [s]
ontime9	3127.5996661782	Sum of GTIs [s]
l2events	1303853	Number of level 2 events

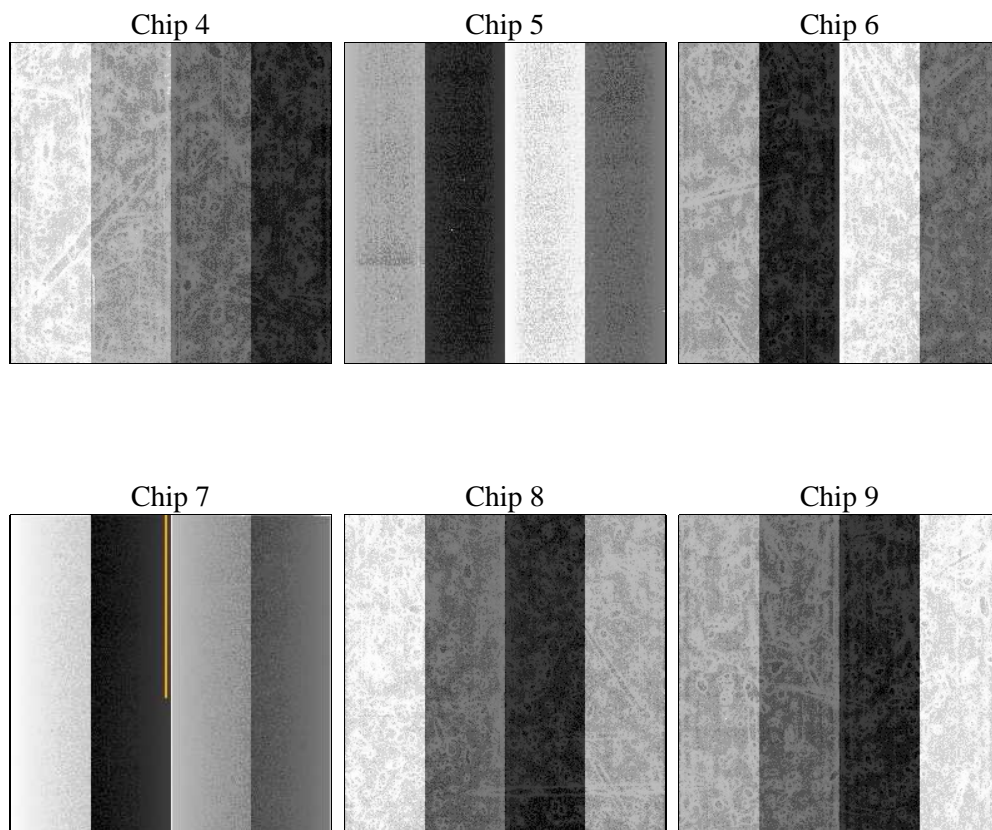
2 OBI

2.1 OBI

2.1.1 Images



2.1.2 Bias



2.1.3 Parameters

obi_num	1	Obi number	sched_exp_time	0.0	[s] Scheduled observation exposure time
ascdsver	8.4.5	Processing system revision	ontime	8240.4586764574	Sum of GTIs [s]
caldsver	4.5.2	 	ontime4	2965.5480952859	Sum of GTIs [s]
date	2012-10-14T02:26:45	Date and time of file creation	ontime5	8444.5984740555	Sum of GTIs [s]
revision	3	Processing version of data	ontime6	3197.4074724019	Sum of GTIs [s]
			ontime7	8240.4586764574	Sum of GTIs [s]
			ontime8	3322.0618169606	Sum of GTIs [s]
			ontime9	3127.5996661782	Sum of GTIs [s]
			l1events	1555610	Number of level 1 events

2.1.4 Events

	ccd 4	ccd 5	ccd 6	ccd 7	ccd 8	ccd 9		ccd 4	ccd 5	ccd 6	ccd 7	ccd 8	ccd 9
level 1 events	156957	417152	178985	444527	188792	169197	grade 0 events	79374	72743	85663	100594	91257	81968
rejected events	22918	59295	22667	42237	24857	22685		50%	17%	47%	22%	48%	48%
rejected %	14%	14%	12%	9%	13%	13%	grade 1 events	591	305	403	254	463	488
								0%	0%	0%	0%	0%	0%
							grade 2 events	20028	142070	26909	89265	28151	24519
								12%	34%	15%	20%	14%	14%
							grade 3 events	8875	19197	9501	40412	10305	9334
								5%	4%	5%	9%	5%	5%
							grade 4 events	9032	18893	9573	39920	10572	9373
								5%	4%	5%	8%	5%	5%
							grade 5 events	1428	9985	1568	8103	1836	1704
								0%	2%	0%	1%	0%	1%
							grade 6 events	17035	105638	24826	132578	23812	21630
								10%	25%	13%	29%	12%	12%
							grade 7 events	20594	48321	20542	33401	22396	20181
								13%	11%	11%	7%	11%	11%

2.2 Compared Parameters

Parameter	Planned	Actual	Parameter	Planned	Actual
Instrument	ACIS	ACIS	Obspar format version number	7	7
Detector	ACIS-456789	ACIS-456789	Obspar file type	PREDICTED	ACTUAL
Grating	NONE	NONE	Obspar update status	NONE	UPDATED
Data mode	FAINT	FAINT	On-chip summing requested	N	N
Observation mode	SECONDARY	SECONDARY	Subarray requested	NONE	NONE
[deg] Pointing RA	0	344.9708332581387	Alternating exposures requested	N	N
[deg] Pointing Dec	0	11.7982408272114	[s] Primary exposure time	0.000000	3.2
[deg] Pointing Roll	0.0	150.7264166166536			
[mm] SIM focus pos	-0.684267	-0.6828225247311905			
[mm] SIM defocus	0	0.8505141146731063			
[mm] SIM translation stage pos	-190.132523	250.466033080201			
[mm] SIM translation stage offset	0	-0.01005468664627074			
[s] Observation start time (MET)	146473388.373042	146473387.34832			
Observation start date	2002-08-23T07:03:08	2002-08-23T07:03:07			
[s] Observation end time (MET)	146494698.123921	146494697.0992			
Observation end date	2002-08-23T12:58:18	2002-08-23T12:58:17			
Read mode	TIMED	TIMED			

2.3 Star Slots

2.4 FID Slots

A Summary

A.1 Status

V&V Scientist	Beth Sundheim
V&V Date (YYYY-MM-DD)	2012.10.23
V&V Edition	1
V&V Disposition and Status	OK
V&V Charge Time	8.2404586764574

A.2 Comments