

# V&V Reference Report

## L2 ASCDS Version : 8.4.5

Observation 61054 - L2 Version 3  
Chandra X-Ray Center

L2 Processing Date : Oct 13 2012

## Contents

<b>1</b>	<b>Front</b>	<b>2</b>
<b>2</b>	<b>OBI</b>	<b>3</b>
2.1	OBI . . . . .	3
2.1.1	Images . . . . .	3
2.1.2	Bias . . . . .	3
2.1.3	Parameters . . . . .	4
2.1.4	Events . . . . .	4
2.2	Compared Parameters . . . . .	5
2.3	Star Slots . . . . .	6
2.4	FID Slots . . . . .	6
<b>A</b>	<b>Summary</b>	<b>7</b>
A.1	Status . . . . .	7
A.2	Comments . . . . .	7

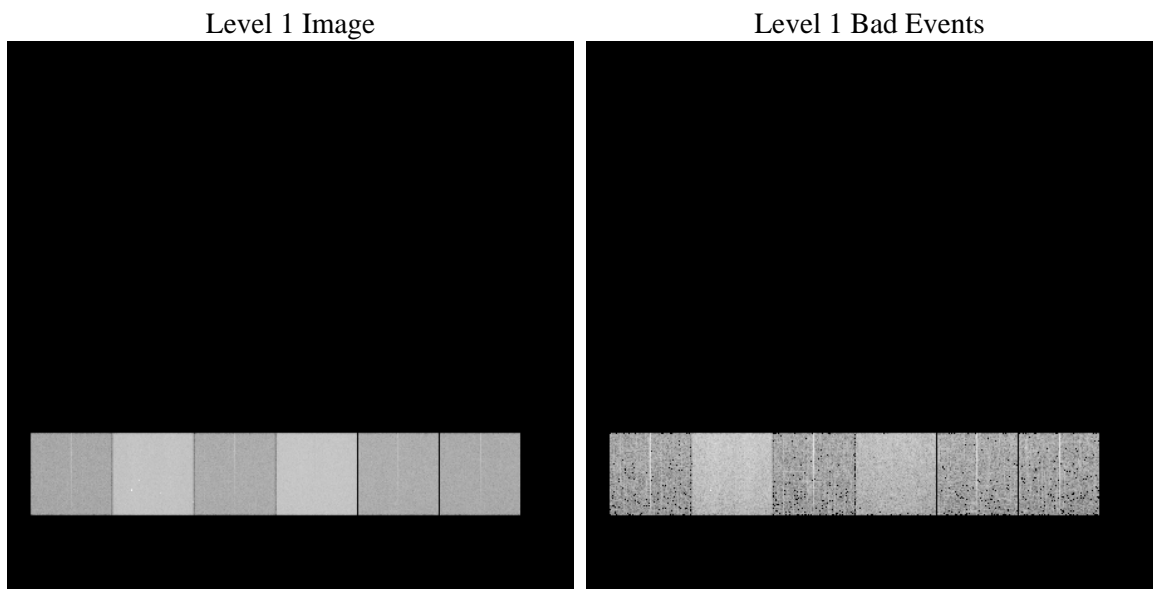
# 1 Front

seq_num	&#160	Sequence number
obs_id	61054	Observation id
title	ACIS-456789 diagnostics	Proposal title
observer	CHANDRA engineering request/realtime commanding	Principal investig
object	&#160	Source name
dtcycle	0	&#160
cycle	P	events from which exps? Prim/Second/Both
ra_targ	0.0	Observer's specified target RA [deg]
dec_targ	0.0	Observer's specified target Dec [deg]
ra_nom	349.97099182147	Nominal RA [deg]
dec_nom	9.9985462167312	Nominal Dec [deg]
roll_nom	150.1080926367	Nominal Roll [deg]
revision	3	Processing version of data
ontime	8244.622161895	Sum of GTIs [s]
livetime	8140.2237917657	Livetime [s]
ontime4	2954.3702331483	Sum of GTIs [s]
ontime5	8458.5667006075	Sum of GTIs [s]
ontime6	3243.8698709011	Sum of GTIs [s]
ontime7	8244.622161895	Sum of GTIs [s]
ontime8	3346.5340696573	Sum of GTIs [s]
ontime9	3169.2035980225	Sum of GTIs [s]
l2events	1302048	Number of level 2 events

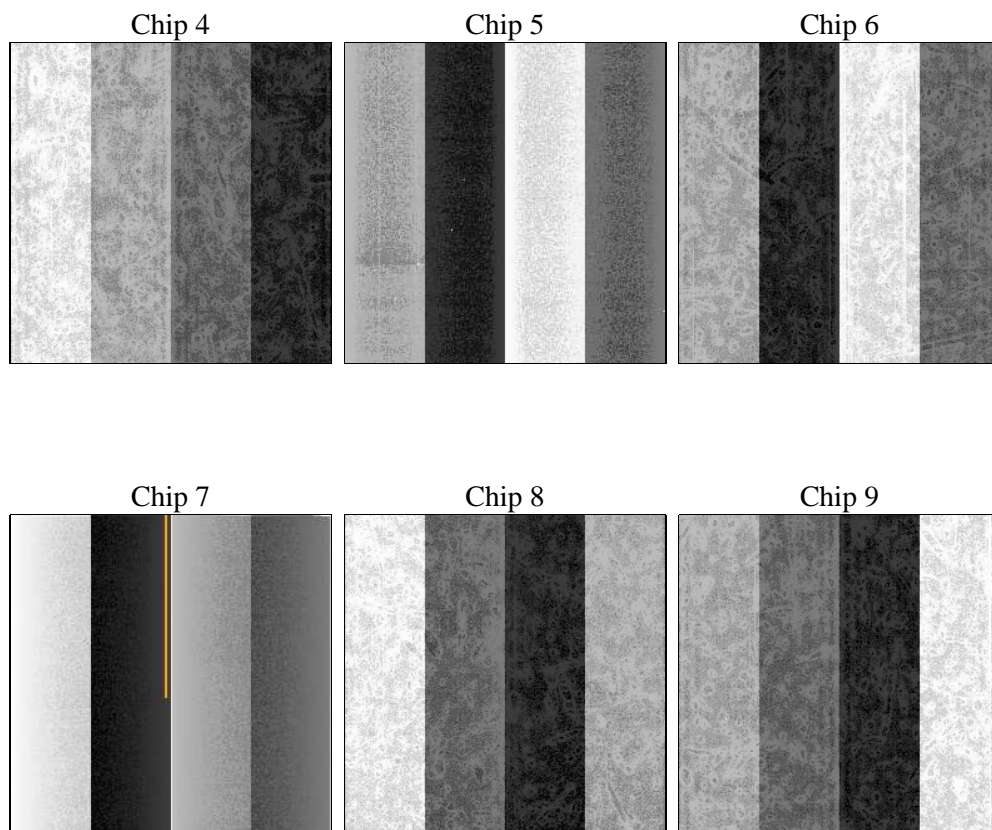
## 2 OBI

### 2.1 OBI

#### 2.1.1 Images



#### 2.1.2 Bias



### 2.1.3 Parameters

obi_num	1	Obi number	sched_exp_time	0.0	[s] Scheduled observation exposure time
ascdsver	8.4.5	Processing system revision	ontime	8244.622161895	Sum of GTIs [s]
caldbver	4.5.2	&#160	ontime4	2954.3702331483	Sum of GTIs [s]
date	2012-10-13T05:26:15	Date and time of file creation	ontime5	8458.5667006075	Sum of GTIs [s]
revision	3	Processing version of data	ontime6	3243.8698709011	Sum of GTIs [s]
			ontime7	8244.622161895	Sum of GTIs [s]
			ontime8	3346.5340696573	Sum of GTIs [s]
			ontime9	3169.2035980225	Sum of GTIs [s]
			l1events	1555599	Number of level 1 events

### 2.1.4 Events

	ccd 4	ccd 5	ccd 6	ccd 7	ccd 8	ccd 9		ccd 4	ccd 5	ccd 6	ccd 7	ccd 8	ccd 9
level 1 events	155298	413778	180982	443333	190401	171807	grade 0 events	78001	69481	85848	99169	91605	82958
rejected events	23012	59737	23621	42921	25349	23065		50%	16%	47%	22%	48%	48%
rejected %	14%	14%	13%	9%	13%	13%	grade 1 events	586	228	395	246	447	434
								0%	0%	0%	0%	0%	0%
							grade 2 events	19795	142052	27198	88704	28399	24826
								12%	34%	15%	20%	14%	14%
							grade 3 events	8789	18969	9475	39845	10354	9258
								5%	4%	5%	8%	5%	5%
							grade 4 events	8742	17899	9710	39699	10660	9519
								5%	4%	5%	8%	5%	5%
							grade 5 events	1456	10086	1731	8529	1866	1663
								0%	2%	0%	1%	0%	0%
							grade 6 events	16959	105640	25130	132995	24034	22181
								10%	25%	13%	29%	12%	12%
							grade 7 events	20970	49423	21495	34146	23036	20968
								13%	11%	11%	7%	12%	12%

## 2.2 Compared Parameters

Parameter	Planned	Actual
Instrument	ACIS	ACIS
Detector	ACIS-456789	ACIS-456789
Grating	NONE	NONE
Data mode	FAINT	FAINT
Observation mode	SECONDARY	SECONDARY
[deg] Pointing RA	0	349.9709918214651
[deg] Pointing Dec	0	9.99854621673123
[deg] Pointing Roll	0.0	150.1080926366963
[mm] SIM focus pos	-0.684267	-1.038866356238299
[mm] SIM defocus	0	0.4944702831659975
[mm] SIM translation stage pos	-190.132523	250.466033080201
[mm] SIM translation stage offset	0	-0.01005468664627074
[s] Observation start time (MET)	147158000.251275	147157999.22656
Observation start date	2002-08-31T05:13:20	2002-08-31T05:13:19
[s] Observation end time (MET)	147180626.102208	147180625.0775
Observation end date	2002-08-31T11:30:26	2002-08-31T11:30:25
Read mode	TIMED	TIMED

Parameter	Planned	Actual
Obspar format version number	7	7
Obspar file type	PREDICTED	ACTUAL
Obspar update status	NONE	UPDATED
On-chip summing requested	N	N
Subarray requested	NONE	NONE
Alternating exposures requested	N	N
[s] Primary exposure time	0.000000	3.2

## **2.3 Star Slots**

## **2.4 FID Slots**

## A Summary

### A.1 Status

V&V Scientist	Beth Sundheim
V&V Date (YYYY-MM-DD)	2012.10.23
V&V Edition	1
V&V Disposition and Status	OK
V&V Charge Time	8.244622161895

### A.2 Comments