

V&V Reference Report

L2 ASCDS Version : 8.4.5

Observation 61047 - L2 Version 3
Chandra X-Ray Center

L2 Processing Date : Oct 13 2012

Contents

1	Front	2
2	OBI	3
2.1	OBI	3
2.1.1	Images	3
2.1.2	Bias	3
2.1.3	Parameters	4
2.1.4	Events	4
2.2	Compared Parameters	5
2.3	Star Slots	6
2.4	FID Slots	6
A	Summary	7
A.1	Status	7
A.2	Comments	7

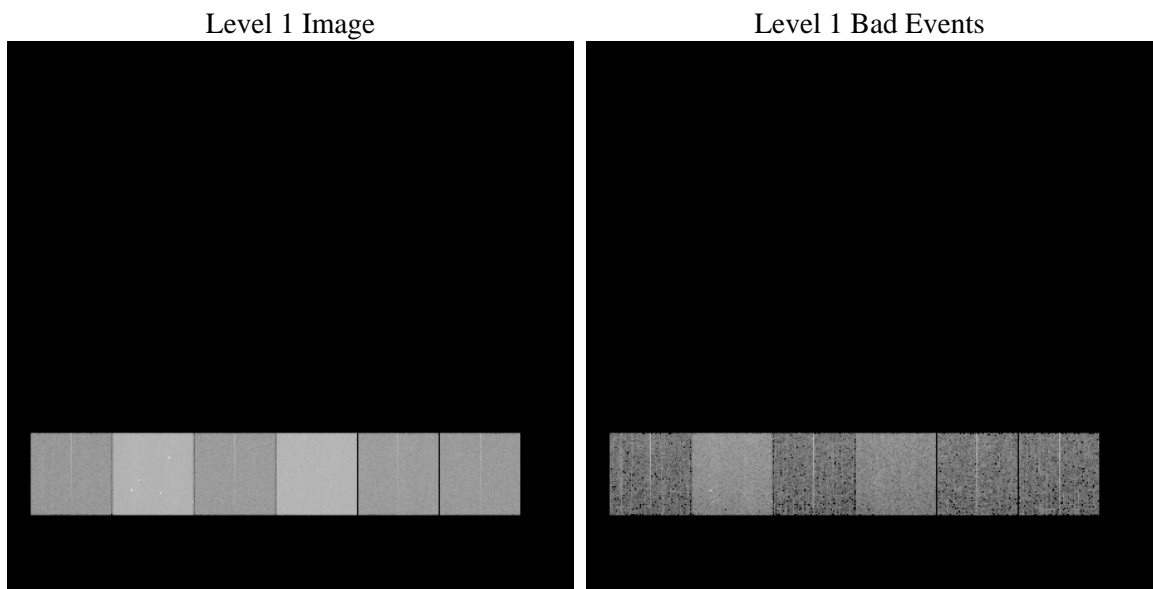
1 Front

seq_num	 	Sequence number
obs_id	61047	Observation id
title	ACIS-456789 diagnostics	Proposal title
observer	CHANDRA engineering request/realtime commanding	Principal investig
object	 	Source name
dtcycle	0	
cycle	P	events from which exps? Prim/Second/Both
ra_targ	0.0	Observer's specified target RA [deg]
dec_targ	0.0	Observer's specified target Dec [deg]
ra_nom	284.53001859257	Nominal RA [deg]
dec_nom	-43.318490358982	Nominal Dec [deg]
roll_nom	286.90694363142	Nominal Roll [deg]
revision	3	Processing version of data
ontime	8227.6188304424	Sum of GTIs [s]
livetime	8123.4357667341	Livetime [s]
ontime4	2936.3793429136	Sum of GTIs [s]
ontime5	8425.2765572667	Sum of GTIs [s]
ontime6	3198.9025759399	Sum of GTIs [s]
ontime7	8227.6188304424	Sum of GTIs [s]
ontime8	3215.1074171364	Sum of GTIs [s]
ontime9	3091.9485250413	Sum of GTIs [s]
l2events	1290690	Number of level 2 events

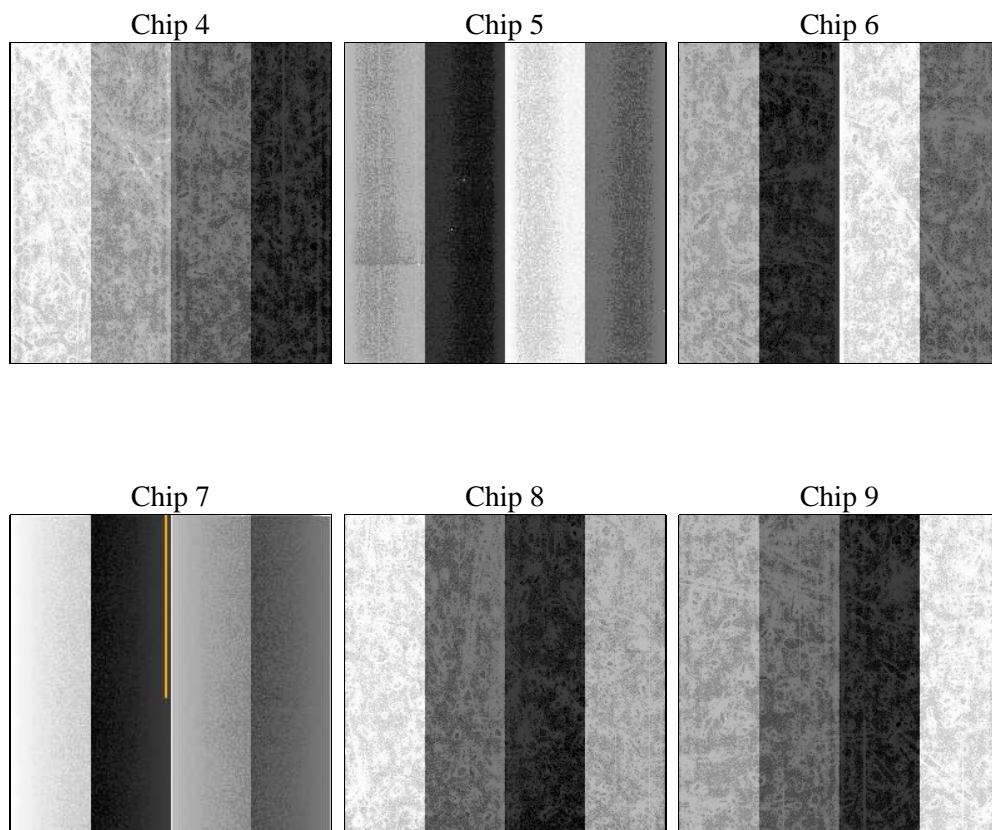
2 OBI

2.1 OBI

2.1.1 Images



2.1.2 Bias



2.1.3 Parameters

obi_num	0	Obi number	sched_exp_time	0.0	[s] Scheduled observation exposure time
ascdsver	8.4.5	Processing system revision	ontime	8227.6188304424	Sum of GTIs [s]
caldsver	4.5.2	 	ontime4	2936.3793429136	Sum of GTIs [s]
date	2012-10-13T05:28:50	Date and time of file creation	ontime5	8425.2765572667	Sum of GTIs [s]
revision	3	Processing version of data	ontime6	3198.9025759399	Sum of GTIs [s]
			ontime7	8227.6188304424	Sum of GTIs [s]
			ontime8	3215.1074171364	Sum of GTIs [s]
			ontime9	3091.9485250413	Sum of GTIs [s]
			l1events	1555166	Number of level 1 events

2.1.4 Events

	ccd 4	ccd 5	ccd 6	ccd 7	ccd 8	ccd 9		ccd 4	ccd 5	ccd 6	ccd 7	ccd 8	ccd 9
level 1 events	156849	419946	179121	445434	184671	169145	grade 0 events	78673	68314	84817	99027	88516	81681
rejected events	24198	64103	23863	44675	25876	23699		50%	16%	47%	22%	47%	48%
rejected %	15%	15%	13%	10%	14%	14%	grade 1 events	549	386	401	274	406	453
								0%	0%	0%	0%	0%	0%
							grade 2 events	19801	145634	27256	88795	27291	24102
								12%	34%	15%	19%	14%	14%
							grade 3 events	8845	17840	9147	39764	10188	9178
								5%	4%	5%	8%	5%	5%
							grade 4 events	8964	17252	9537	39291	10216	9278
								5%	4%	5%	8%	5%	5%
							grade 5 events	1467	10756	1688	8371	1822	1700
								0%	2%	0%	1%	0%	1%
							grade 6 events	16812	107998	25130	135250	23226	21679
								10%	25%	14%	30%	12%	12%
							grade 7 events	21738	51766	21145	34662	23006	21074
								13%	12%	11%	7%	12%	12%

2.2 Compared Parameters

Parameter	Planned	Actual	Parameter	Planned	Actual
Instrument	ACIS	ACIS	Obspar format version number	7	7
Detector	ACIS-456789	ACIS-456789	Obspar file type	PREDICTED	ACTUAL
Grating	NONE	NONE	Obspar update status	NONE	UPDATED
Data mode	FAINT	FAINT	On-chip summing requested	N	N
Observation mode	SECONDARY	SECONDARY	Subarray requested	NONE	NONE
[deg] Pointing RA	0	284.5300185925695	Alternating exposures requested	N	N
[deg] Pointing Dec	0	-43.31849035898178	[s] Primary exposure time	3.2	3.2
[deg] Pointing Roll	0.0	286.9069436314151			
[mm] SIM focus pos	-0.684267	-0.6828225247311905			
[mm] SIM defocus	0	0.8505141146731063			
[mm] SIM translation stage pos	-190.132523	250.466033080201			
[mm] SIM translation stage offset	0	-0.01005468664627074			
[s] Observation start time (MET)	147610804.269958	147610803.24525			
Observation start date	2002-09-05T11:00:04	2002-09-05T11:00:03			
[s] Observation end time (MET)	147634112.770919	147634111.74621			
Observation end date	2002-09-05T17:28:33	2002-09-05T17:28:31			
Read mode	TIMED	TIMED			

2.3 Star Slots

2.4 FID Slots

A Summary

A.1 Status

V&V Scientist	Beth Sundheim
V&V Date (YYYY-MM-DD)	2012.10.23
V&V Edition	1
V&V Disposition and Status	OK
V&V Charge Time	8.2276188304424

A.2 Comments