

V&V Reference Report

L2 ASCDS Version : 7.6.9

Observation 61027 - L2 Version 001
Chandra X-Ray Center

L2 Processing Date : Oct 4 2006

Contents

1	Front	2
2	OBI	3
2.1	OBI	3
2.1.1	Images	3
2.1.2	Bias	3
2.1.3	Parameters	4
2.1.4	Events	4
2.2	Compared Parameters	5
2.3	Aspect	6
2.4	Star Slots	8
2.5	FID Slots	8
A	Summary	9
A.1	Status	9
A.2	Comments	9

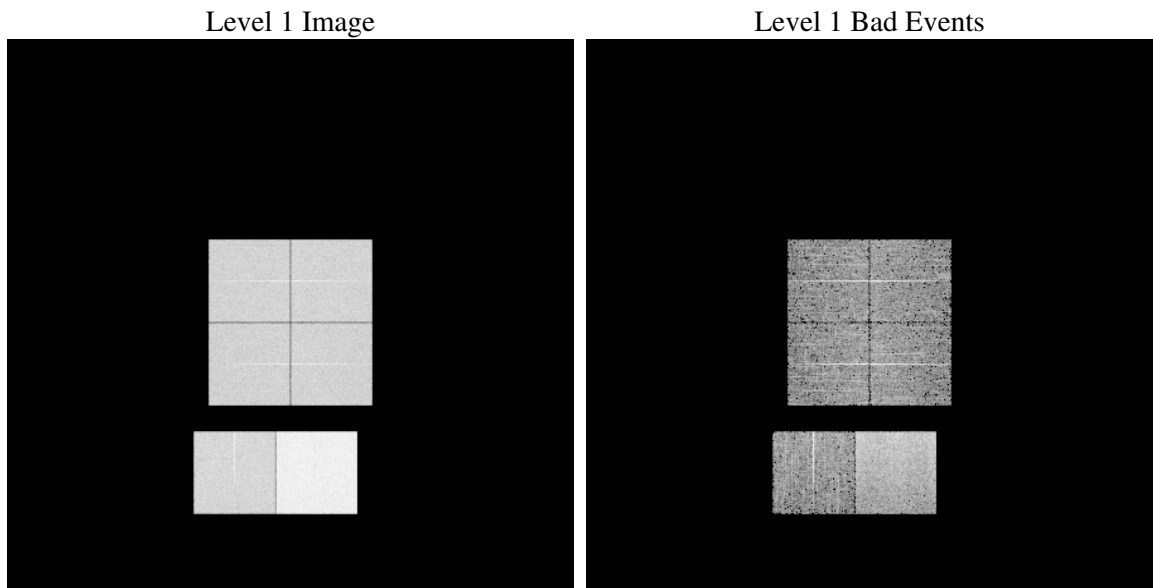
1 Front

seq_num	
obs_id	61027
title	ACIS-012367 diagnostics
observer	CHANDRA engineering request/realtime commanding
object	
dtcycle	0
cycle	P
ra_targ	0.0
dec_targ	0.0
ra_nom	348.0999956091
dec_nom	5.4713891786515
roll_nom	237.16711664161
revision	2
ontime	7797.4483860135
livetime	7698.7123994901
ontime0	3788.4023932815
ontime1	3850.0220961869
ontime2	3613.4700164199
ontime3	3642.4738014936
ontime6	4005.6726817787
ontime7	7797.4483860135
l2events	1200159

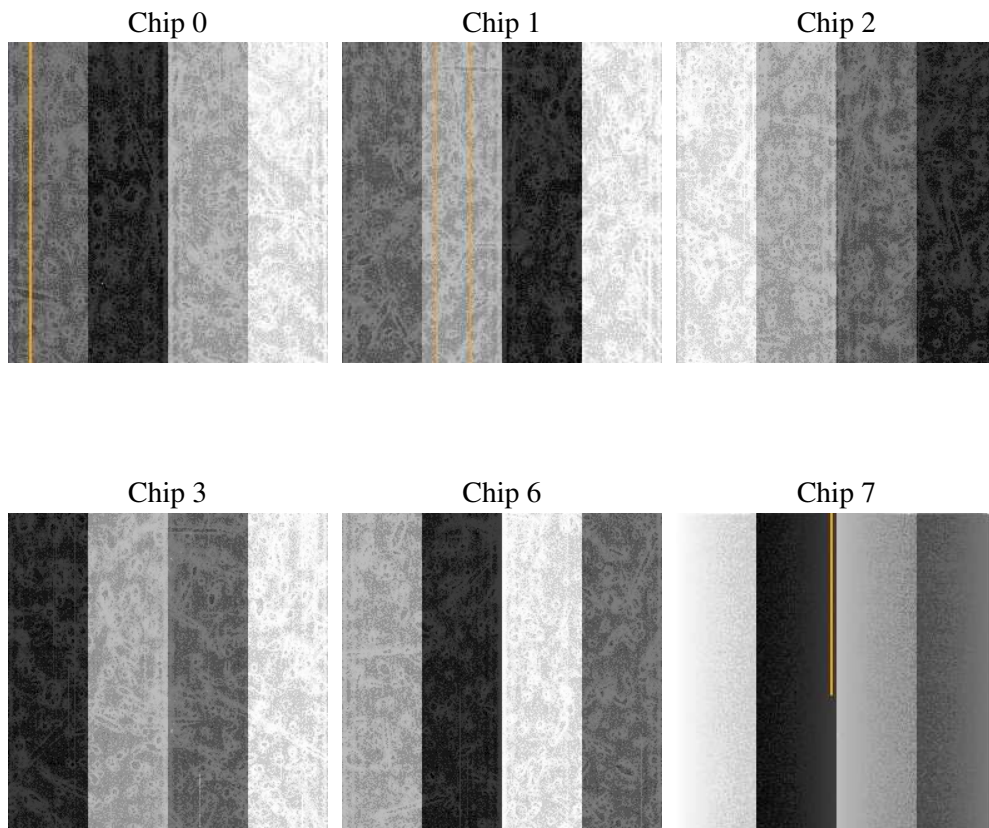
2 OBI

2.1 OBI

2.1.1 Images



2.1.2 Bias



2.1.3 Parameters

obi_num	0
ascdsver	7.6.9
caldbver	3.2.3
date	2006-10-04T20:41:04
revision	2

sched_exp_time	0.0
ontime	7797.8525824845
ontime0	3788.7655497491
ontime1	3850.3442126513
ontime2	3613.751092881
ontime3	3642.9190379679
ontime6	4005.9127182662
ontime7	7797.8525824845
l1events	1434020

2.1.4 Events

	ccd 0	ccd 1	ccd 2	ccd 3	ccd 6	ccd 7
level 1 events	199207	203164	194419	196217	221565	419448
rejected events	24128	24564	25629	25729	27296	53217
rejected %	12%	12%	13%	13%	12%	12%

	ccd 0	ccd 1	ccd 2	ccd 3	ccd 6	ccd 7
grade 0 events	96946	98720	94716	96093	105912	68592
	48%	48%	48%	48%	47%	16%
grade 1 events	508	479	549	538	509	160
	0%	0%	0%	0%	0%	0%
grade 2 events	30226	31625	28832	29029	33354	109432
	15%	15%	14%	14%	15%	26%
grade 3 events	11225	11167	11056	11020	11986	27625
	5%	5%	5%	5%	5%	6%
grade 4 events	11451	11370	10949	11096	12174	27378
	5%	5%	5%	5%	5%	6%
grade 5 events	1769	1861	1671	1748	1950	7157
	0%	0%	0%	0%	0%	1%
grade 6 events	25231	25718	23237	23250	30843	133204
	12%	12%	11%	11%	13%	31%
grade 7 events	21851	22224	23409	23443	24837	45900
	10%	10%	12%	11%	11%	10%

2.2 Compared Parameters

Parameter	Planned	Actual	Parameter	Planned	Actual
Instrument	ACIS	ACIS	Obspar format version number	6	6
Detector	ACIS-012367	ACIS-012367	Obspar file type	PREDICTED	ACTUAL
Grating	NONE	NONE	Obspar update status	NONE	UPDATED
Data mode	FAINT	FAINT	On-chip summing requested	N	N
Observation mode	SECONDARY	SECONDARY	Subarray requested	NONE	NONE
Pointing RA	0	348.0999956091048	Alternating exposures requested	N	N
Pointing Dec	0	5.471389178651539	Primary exposure time	0.000000	3.2
Pointing Roll	0.0	237.1671166416061			
SIM focus pos (mm)	-0.782348	-0.7809083437167272			
SIM defocus (mm)	0	0.7524282956875696			
SIM translation stage pos (mm)	-233.592463	250.466033080201			
SIM translation stage offset (mm)	0	-0.01005468664627074			
Observation start time	148946756.525153	148946755.50045			
Observation start date	2002-09-20T22:05:57	2002-09-20T22:05:55			
Observation end time	148984507.276713	148984506.25202			
Observation end date	2002-09-21T08:35:07	2002-09-21T08:35:06			
Read mode	TIMED	TIMED			

2.3 Aspect

2.4 Star Slots

2.5 FID Slots

A Summary

A.1 Status

V&V Scientist	Jen Lauer
V&V Date (YYYY-MM-DD)	2006.10.05
V&V Edition	1
V&V Disposition and Status	OK
V&V Charge Time	7.79744838

A.2 Comments