

# V&V Reference Report

## L2 ASCDS Version : 7.6.9

Observation 61022 - L2 Version 001  
Chandra X-Ray Center

L2 Processing Date : Oct 4 2006

## Contents

<b>1</b>	<b>Front</b>	<b>2</b>
<b>2</b>	<b>OBI</b>	<b>3</b>
2.1	OBI . . . . .	3
2.1.1	Images . . . . .	3
2.1.2	Bias . . . . .	3
2.1.3	Parameters . . . . .	4
2.1.4	Events . . . . .	4
2.2	Compared Parameters . . . . .	5
2.3	Aspect . . . . .	6
2.4	Star Slots . . . . .	8
2.5	FID Slots . . . . .	8
<b>A</b>	<b>Summary</b>	<b>9</b>
A.1	Status . . . . .	9
A.2	Comments . . . . .	9

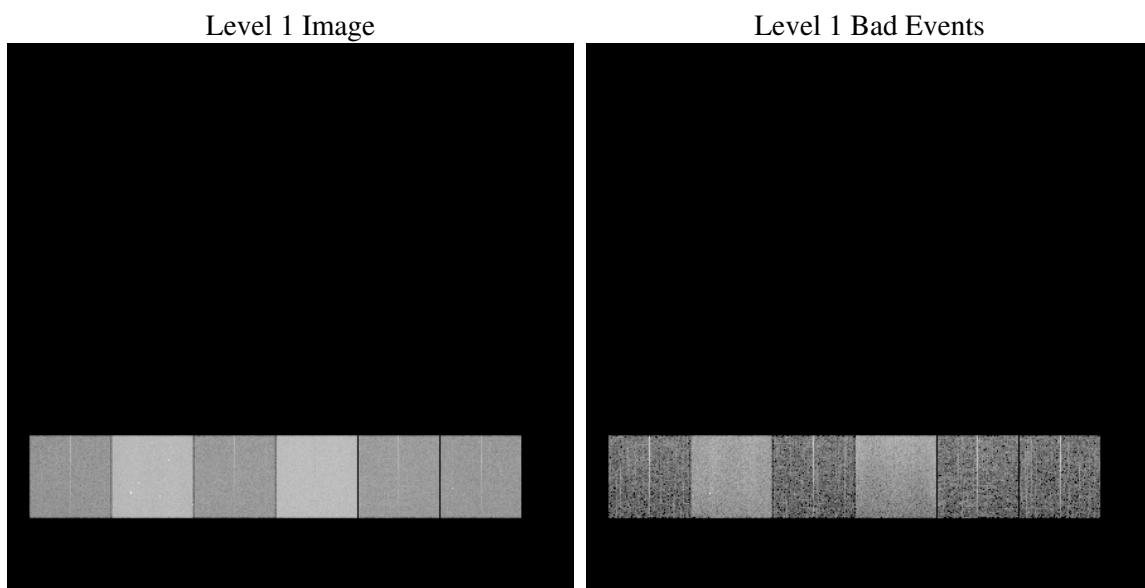
# 1 Front

seq_num	&#160
obs_id	61022
title	ACIS-456789 diagnostics
observer	CHANDRA engineering request/realtime commanding
object	&#160
dtcycle	0
cycle	P
ra_targ	0.0
dec_targ	0.0
ra_nom	250.7159932401
dec_nom	2.0762856701106
roll_nom	271.16736896265
revision	2
ontime	8457.599968493
livetime	8350.5047451366
ontime4	2996.7961301208
ontime5	8457.599968493
ontime6	3239.8316244483
ontime7	8457.599968493
ontime8	3346.5823904574
ontime9	3191.0932733119
l2events	1268227

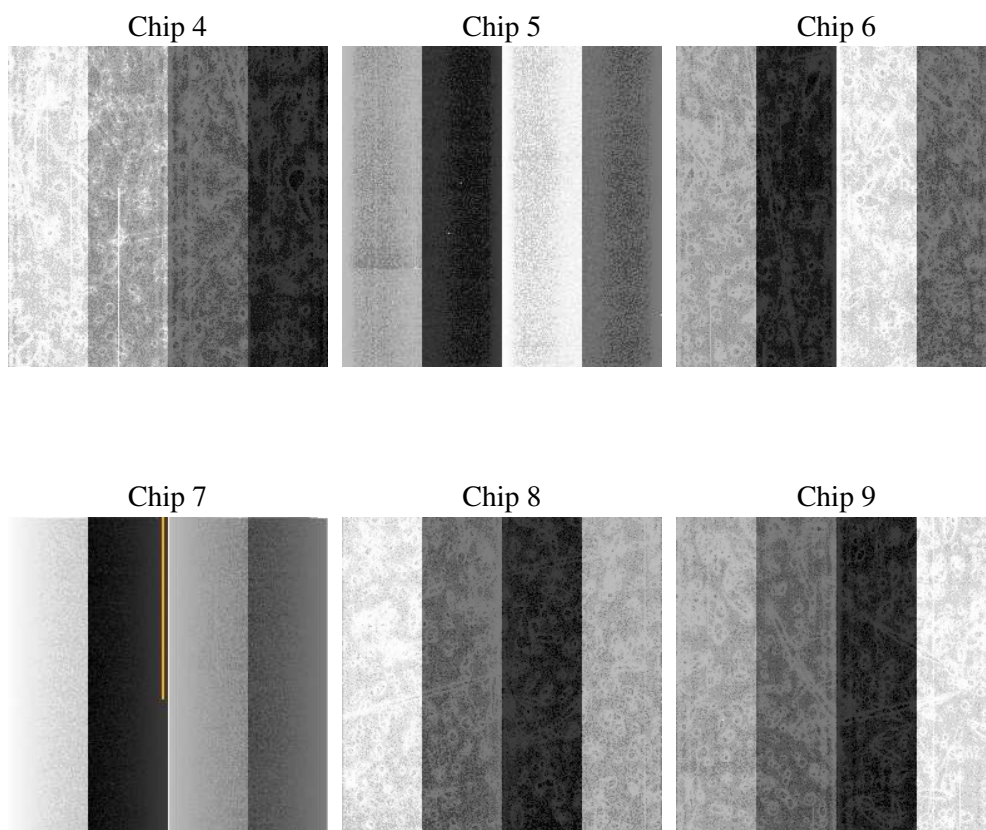
## 2 OBI

### 2.1 OBI

#### 2.1.1 Images



#### 2.1.2 Bias



### 2.1.3 Parameters

obi_num	0
ascdsver	7.6.9
caldbver	3.2.3
date	2006-10-04T21:15:48
revision	2

sched_exp_time	0.0
ontime	8459.0058300197
ontime4	2997.9584340453
ontime5	8459.0058300197
ontime6	3241.0349683762
ontime7	8459.0058300197
ontime8	3347.9882519841
ontime9	3192.4197372496
l1events	1550056

### 2.1.4 Events

	ccd 4	ccd 5	ccd 6	ccd 7	ccd 8	ccd 9
level 1 events	155956	409673	178530	448279	187299	170319
rejected events	24382	68258	23823	60572	25918	23548
rejected %	15%	16%	13%	13%	13%	13%

	ccd 4	ccd 5	ccd 6	ccd 7	ccd 8	ccd 9
grade 0 events	77858	35435	84353	67158	88994	81932
	49%	8%	47%	14%	47%	48%
grade 1 events	523	114	396	145	460	434
	0%	0%	0%	0%	0%	0%
grade 2 events	19837	164450	27073	120040	27801	24479
	12%	40%	15%	26%	14%	14%
grade 3 events	8737	10546	9118	27706	10387	9177
	5%	2%	5%	6%	5%	5%
grade 4 events	8543	9899	9398	27042	10296	9310
	5%	2%	5%	6%	5%	5%
grade 5 events	1489	6932	1713	7704	1893	1642
	0%	1%	0%	1%	1%	0%
grade 6 events	16599	121085	24765	145761	23903	21873
	10%	29%	13%	32%	12%	12%
grade 7 events	22370	61212	21714	52723	23565	21472
	14%	14%	12%	11%	12%	12%

## 2.2 Compared Parameters

Parameter	Planned	Actual	Parameter	Planned	Actual
Instrument	ACIS	ACIS	Obspar format version number	6	6
Detector	ACIS-456789	ACIS-456789	Obspar file type	PREDICTED	ACTUAL
Grating	NONE	NONE	Obspar update status	NONE	UPDATED
Data mode	FAINT	FAINT	On-chip summing requested	N	N
Observation mode	SECONDARY	SECONDARY	Subarray requested	NONE	NONE
Pointing RA	0	250.715993240104	Alternating exposures requested	N	N
Pointing Dec	0	2.076285670110567	Primary exposure time	0.000000	3.2
Pointing Roll	0.0	271.1673689626539			
SIM focus pos (mm)	-0.684267	-1.038866356238299			
SIM defocus (mm)	0	0.4944702831659975			
SIM translation stage pos (mm)	-190.132523	250.466033080201			
SIM translation stage offset (mm)	0	-0.01005468664627074			
Observation start time	149214142.13624	149214141.11152			
Observation start date	2002-09-24T00:22:22	2002-09-24T00:22:21			
Observation end time	149237268.187198	149237267.16248			
Observation end date	2002-09-24T06:47:48	2002-09-24T06:47:47			
Read mode	TIMED	TIMED			

## 2.3 Aspect



## **2.4 Star Slots**

## **2.5 FID Slots**



## A Summary

### A.1 Status

V&V Scientist	Jen Lauer
V&V Date (YYYY-MM-DD)	2006.10.05
V&V Edition	1
V&V Disposition and Status	OK
V&V Charge Time	8.45759996

### A.2 Comments

The ACIS focal plane temperature was above calibration limits for the entire observation.