

V&V Reference Report

L2 ASCDS Version : 7.6.9

Observation 61011 - L2 Version 001
Chandra X-Ray Center

L2 Processing Date : Oct 5 2006

Contents

1	Front	2
2	OBI	3
2.1	OBI	3
2.1.1	Images	3
2.1.2	Bias	3
2.1.3	Parameters	4
2.1.4	Events	4
2.2	Compared Parameters	5
2.3	Aspect	6
2.4	Star Slots	8
2.5	FID Slots	8
A	Summary	9
A.1	Status	9
A.2	Comments	9

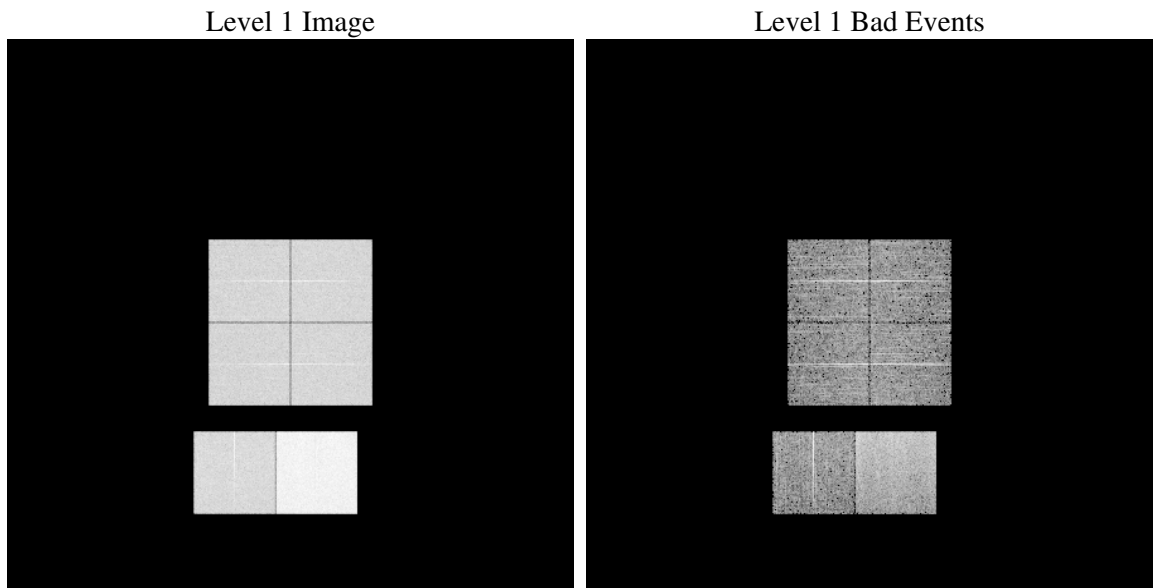
1 Front

seq_num	
obs_id	61011
title	ACIS-012367 diagnostics
observer	CHANDRA engineering request/realtime commanding
object	
dtcycle	0
cycle	P
ra_targ	0.0
dec_targ	0.0
ra_nom	30.144302287102
dec_nom	24.971731787336
roll_nom	133.46270716967
revision	2
ontime	7790.565207243
livetime	7691.9163796737
ontime0	3775.0402947366
ontime1	3823.6960972548
ontime2	3632.5180494487
ontime3	3726.3427241743
ontime6	3972.8645527065
ontime7	7790.565207243
l2events	1196755

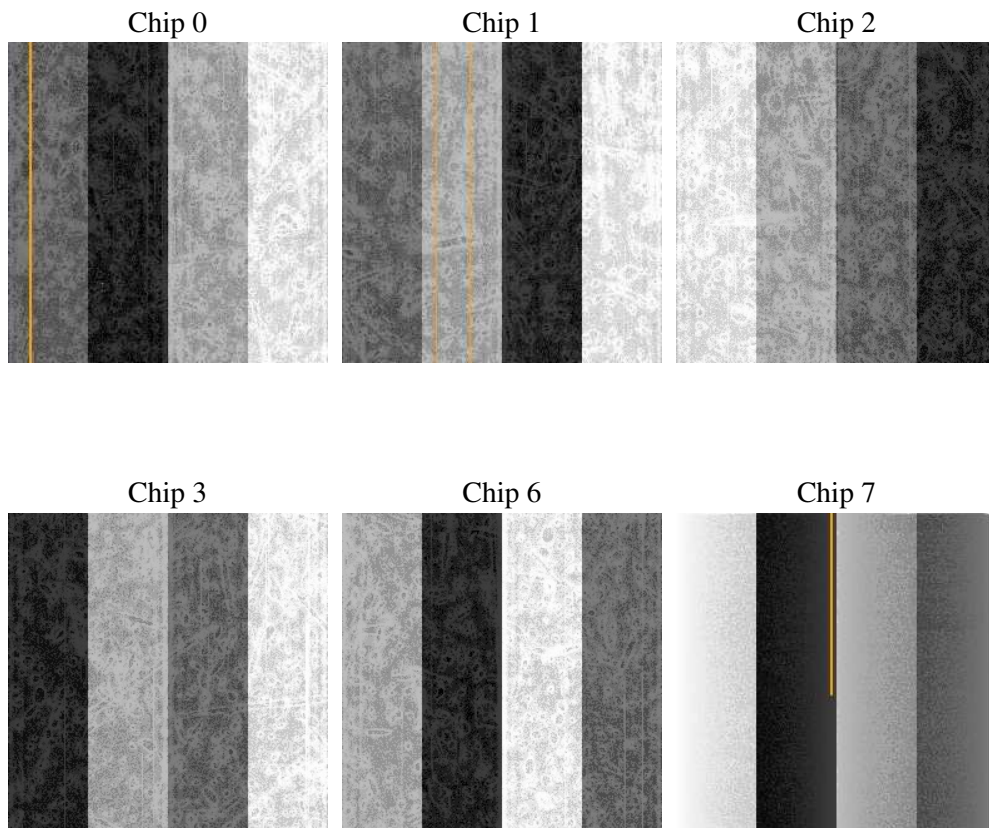
2 OBI

2.1 OBI

2.1.1 Images



2.1.2 Bias



2.1.3 Parameters

obi_num	0
ascdsver	7.6.9
caldbver	3.2.3
date	2006-10-06T01:25:03
revision	2

sched_exp_time	0.0
ontime	7791.3666025102
ontime0	3775.8006500006
ontime1	3824.4154125154
ontime2	3633.1963247061
ontime3	3727.1851594448
ontime6	3973.5017879903
ontime7	7791.3666025102
l1events	1431731

2.1.4 Events

	ccd 0	ccd 1	ccd 2	ccd 3	ccd 6	ccd 7
level 1 events	199076	201920	194247	200052	219625	416811
rejected events	25424	25359	24956	26364	27178	53102
rejected %	12%	12%	12%	13%	12%	12%

	ccd 0	ccd 1	ccd 2	ccd 3	ccd 6	ccd 7
grade 0 events	96347	97008	95014	97912	104934	67827
	48%	48%	48%	48%	47%	16%
grade 1 events	534	481	535	552	507	166
	0%	0%	0%	0%	0%	0%
grade 2 events	30081	31093	28678	29707	33283	108614
	15%	15%	14%	14%	15%	26%
grade 3 events	11155	11331	11080	11205	11933	27586
	5%	5%	5%	5%	5%	6%
grade 4 events	11095	11283	10975	11256	11886	27291
	5%	5%	5%	5%	5%	6%
grade 5 events	1791	1828	1689	1803	2038	7079
	0%	0%	0%	0%	0%	1%
grade 6 events	24974	25846	23544	23608	30411	132391
	12%	12%	12%	11%	13%	31%
grade 7 events	23099	23050	22732	24009	24633	45857
	11%	11%	11%	12%	11%	11%

2.2 Compared Parameters

Parameter	Planned	Actual	Parameter	Planned	Actual
Instrument	ACIS	ACIS	Obspar format version number	6	6
Detector	ACIS-012367	ACIS-012367	Obspar file type	PREDICTED	ACTUAL
Grating	NONE	NONE	Obspar update status	NONE	UPDATED
Data mode	FAINT	FAINT	On-chip summing requested	N	N
Observation mode	SECONDARY	SECONDARY	Subarray requested	NONE	NONE
Pointing RA	0	30.14430228710248	Alternating exposures requested	N	N
Pointing Dec	0	24.97173178733641	Primary exposure time	0.000000	3.2
Pointing Roll	0.0	133.4627071696655			
SIM focus pos (mm)	-0.782348	-0.6828225247311905			
SIM defocus (mm)	0	0.8505141146731063			
SIM translation stage pos (mm)	-233.592463	250.466033080201			
SIM translation stage offset (mm)	0	-0.01005468664627074			
Observation start time	150091454.022578	150091452.99784			
Observation start date	2002-10-04T04:04:14	2002-10-04T04:04:12			
Observation end time	150103159.523063	150103158.49833			
Observation end date	2002-10-04T07:19:20	2002-10-04T07:19:18			
Read mode	TIMED	TIMED			

2.3 Aspect

2.4 Star Slots

2.5 FID Slots

A Summary

A.1 Status

V&V Scientist	Jen Lauer
V&V Date (YYYY-MM-DD)	2006.10.06
V&V Edition	1
V&V Disposition and Status	OK
V&V Charge Time	7.7905652

A.2 Comments