

V&V Reference Report

L2 ASCDS Version : 8.4.5

Observation 61006 - L2 Version 3
Chandra X-Ray Center

L2 Processing Date : Oct 15 2012

Contents

1	Front	2
2	OBI	3
2.1	OBI	3
2.1.1	Images	3
2.1.2	Bias	3
2.1.3	Parameters	4
2.1.4	Events	4
2.2	Compared Parameters	5
2.3	Star Slots	6
2.4	FID Slots	6
A	Summary	7
A.1	Status	7
A.2	Comments	7

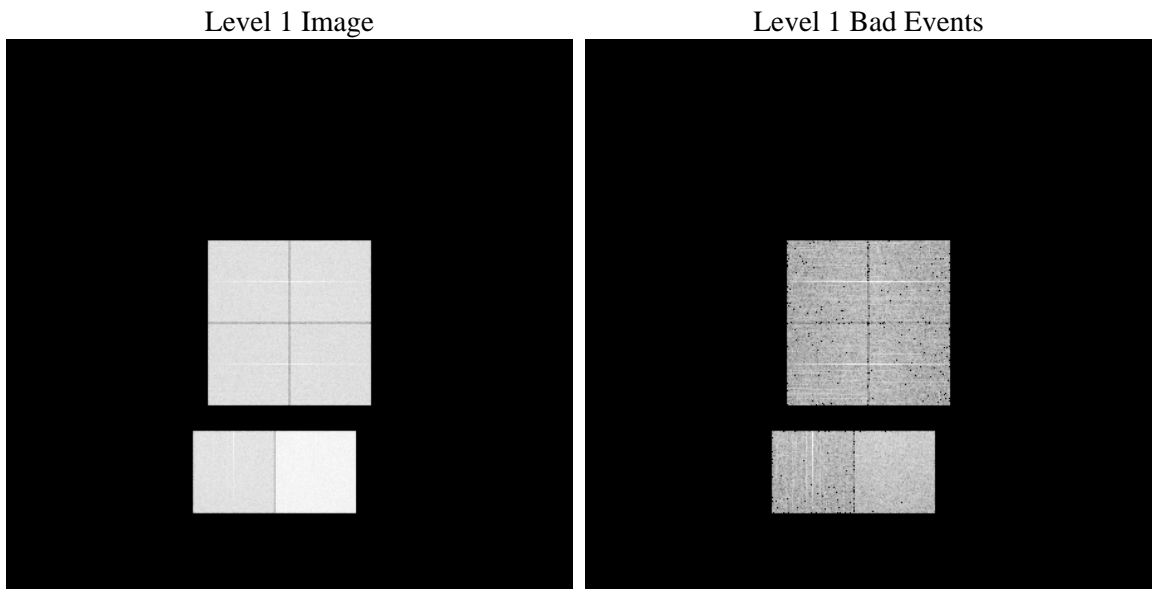
1 Front

seq_num	 	Sequence number
obs_id	61006	Observation id
title	ACIS-012367 diagnostics	Proposal title
observer	CHANDRA engineering request/realtime commanding	Principal investig
object	 	Source name
dtcycle	0	
cycle	P	events from which exps? Prim/Second/Both
ra_targ	0.0	Observer's specified target RA [deg]
dec_targ	0.0	Observer's specified target Dec [deg]
ra_nom	0.02383190741034	Nominal RA [deg]
dec_nom	-0.015851554858996	Nominal Dec [deg]
roll_nom	293.48567362547	Nominal Roll [deg]
revision	3	Processing version of data
ontime	8438.3999685645	Sum of GTIs [s]
livetime	8331.5478671681	Livetime [s]
ontime0	3972.4296507835	Sum of GTIs [s]
ontime1	4118.1805744469	Sum of GTIs [s]
ontime2	3862.1424405873	Sum of GTIs [s]
ontime3	3914.0097971857	Sum of GTIs [s]
ontime6	4235.0741017163	Sum of GTIs [s]
ontime7	8438.3999685645	Sum of GTIs [s]
l2events	1297330	Number of level 2 events

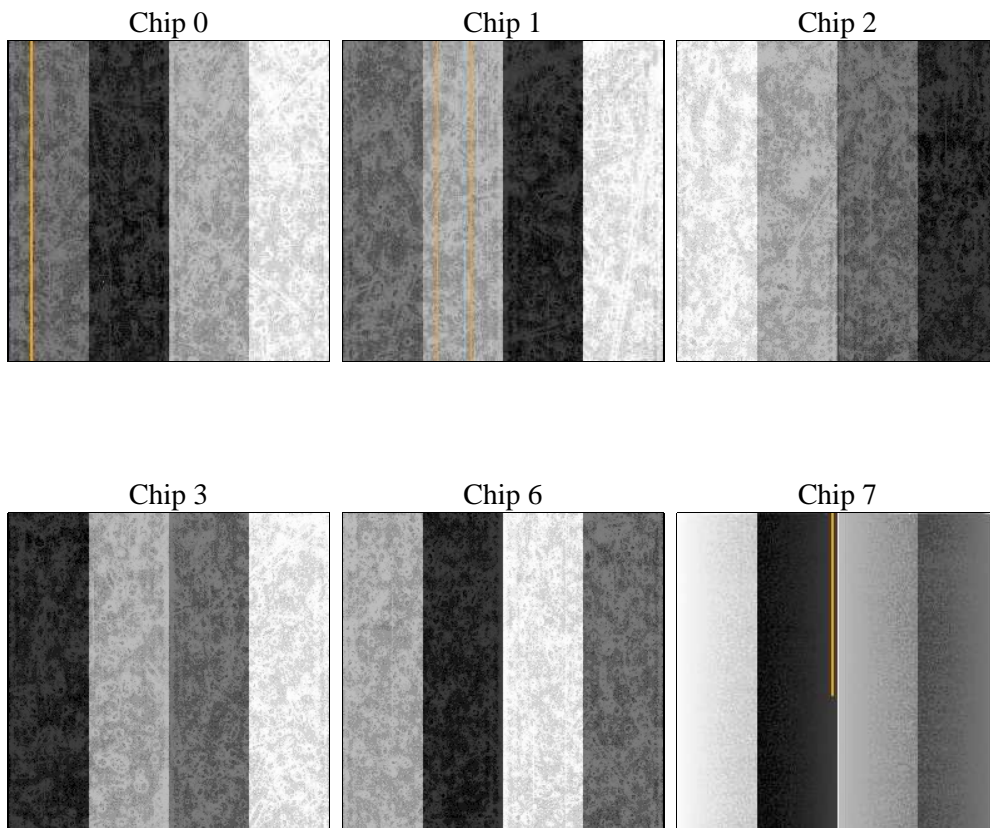
2 OBI

2.1 OBI

2.1.1 Images



2.1.2 Bias



2.1.3 Parameters

obi_num	0	Obi number	sched_exp_time	0.0	[s] Scheduled observation exposure time
ascdsver	8.4.5	Processing system revision	ontime	8438.3999685645	Sum of GTIs [s]
caldbver	4.5.2	 	ontime0	3972.4296507835	Sum of GTIs [s]
date	2012-10-15T12:59:52	Date and time of file creation	ontime1	4118.1805744469	Sum of GTIs [s]
revision	3	Processing version of data	ontime2	3862.1424405873	Sum of GTIs [s]
			ontime3	3914.0097971857	Sum of GTIs [s]
			ontime6	4235.0741017163	Sum of GTIs [s]
			ontime7	8438.3999685645	Sum of GTIs [s]
			l1events	1551583	Number of level 1 events

2.1.4 Events

	ccd 0	ccd 1	ccd 2	ccd 3	ccd 6	ccd 7		ccd 0	ccd 1	ccd 2	ccd 3	ccd 6	ccd 7
level 1 events	213870	221353	210476	211666	237494	456724	grade 0 events	102321	104807	101213	102419	112205	102622
rejected events	29210	30391	30134	28743	31185	46977		47%	47%	48%	48%	47%	22%
rejected %	13%	13%	14%	13%	13%	10%	grade 1 events	567	549	620	686	554	270
								0%	0%	0%	0%	0%	0%
							grade 2 events	32037	33770	30460	31320	35821	90392
								14%	15%	14%	14%	15%	19%
							grade 3 events	11871	12344	11689	11874	12846	41412
								5%	5%	5%	5%	5%	9%
							grade 4 events	11820	12265	11891	12100	12718	40819
								5%	5%	5%	5%	5%	8%
							grade 5 events	1999	2027	1980	2071	2283	9001
								0%	0%	0%	0%	0%	1%
							grade 6 events	26921	28223	25391	25497	33187	135413
								12%	12%	12%	12%	13%	29%
							grade 7 events	26334	27368	27232	25699	27880	36795
								12%	12%	12%	12%	11%	8%

2.2 Compared Parameters

Parameter	Planned	Actual
Instrument	ACIS	ACIS
Detector	ACIS-012367	ACIS-012367
Grating	NONE	NONE
Data mode	FAINT	FAINT
Observation mode	SECONDARY	SECONDARY
[deg] Pointing RA	0	0.02383190741034014
[deg] Pointing Dec	0	-0.01585155485899633
[deg] Pointing Roll	0.0	293.4856736254667
[mm] SIM focus pos	-0.782348	-1.428180813131781
[mm] SIM defocus	0	0.1051558262725154
[mm] SIM translation stage pos	-233.592463	250.466033080201
[mm] SIM translation stage offset	0	-0.01005468664627074
[s] Observation start time (MET)	150355293.133488	150355292.10877
Observation start date	2002-10-07T05:21:33	2002-10-07T05:21:32
[s] Observation end time (MET)	150377902.584425	150377901.55971
Observation end date	2002-10-07T11:38:23	2002-10-07T11:38:21
Read mode	TIMED	TIMED

Parameter	Planned	Actual
Obspar format version number	7	7
Obspar file type	PREDICTED	ACTUAL
Obspar update status	NONE	UPDATED
On-chip summing requested	N	N
Subarray requested	NONE	NONE
Alternating exposures requested	N	N
[s] Primary exposure time	0.000000	3.2

2.3 Star Slots

2.4 FID Slots

A Summary

A.1 Status

V&V Scientist	Jen Lauer
V&V Date (YYYY-MM-DD)	2012.10.25
V&V Edition	1
V&V Disposition and Status	OK
V&V Charge Time	8.4383999685645

A.2 Comments