

# V&V Reference Report

## L2 ASCDS Version : 7.6.9

Observation 60996 - L2 Version 001  
Chandra X-Ray Center

L2 Processing Date : Oct 7 2006

## Contents

<b>1</b>	<b>Front</b>	<b>2</b>
<b>2</b>	<b>OBI</b>	<b>3</b>
2.1	OBI . . . . .	3
2.1.1	Images . . . . .	3
2.1.2	Bias . . . . .	3
2.1.3	Parameters . . . . .	4
2.1.4	Events . . . . .	4
2.2	Compared Parameters . . . . .	5
2.3	Aspect . . . . .	6
2.4	Star Slots . . . . .	8
2.5	FID Slots . . . . .	8
<b>A</b>	<b>Summary</b>	<b>9</b>
A.1	Status . . . . .	9
A.2	Comments . . . . .	9

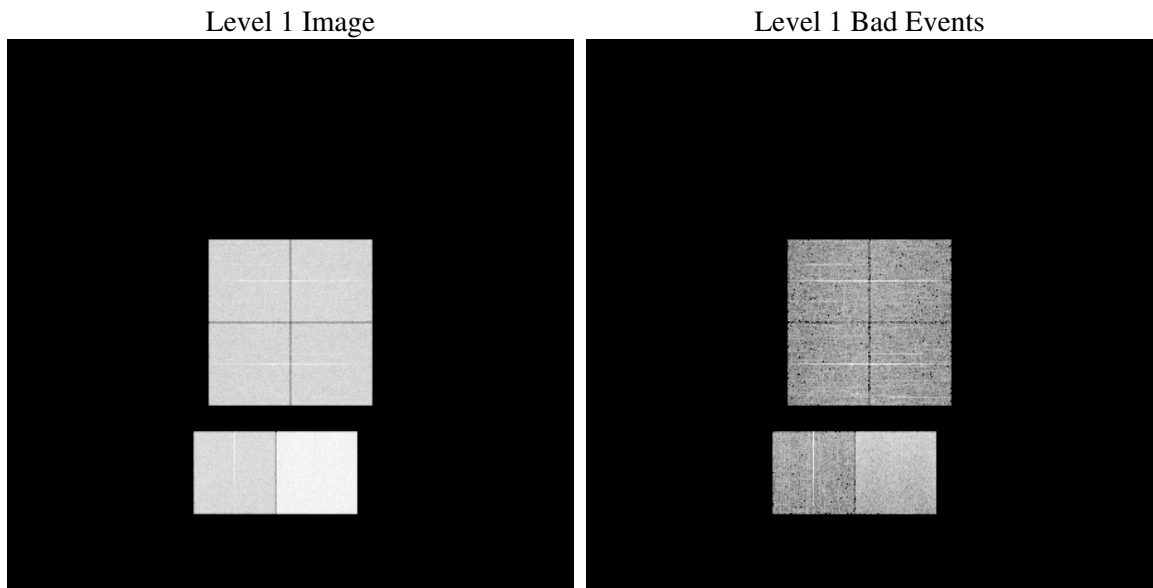
# 1 Front

seq_num	&#160
obs_id	60996
title	ACIS-012367 diagnostics
observer	CHANDRA engineering request/realtime commanding
object	&#160
dtcycle	0
cycle	P
ra_targ	0.0
dec_targ	0.0
ra_nom	110.07395137282
dec_nom	58.525162668872
roll_nom	85.57009278502
revision	2
ontime	8351.9999688864
livetime	8246.2419163097
ontime0	3888.0697560012
ontime1	3991.8224823773
ontime2	3748.788751483
ontime3	3832.8901368082
ontime6	4151.7005484104
ontime7	8351.9999688864
l2events	1265552

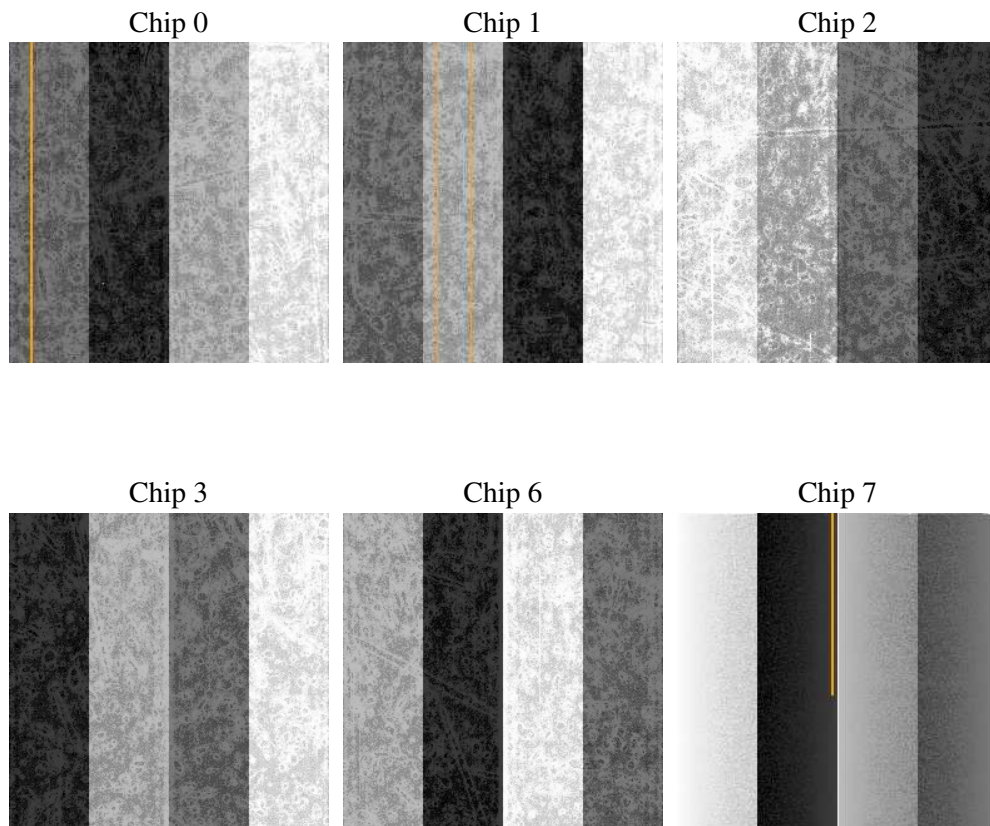
## 2 OBI

### 2.1 OBI

#### 2.1.1 Images



#### 2.1.2 Bias



### 2.1.3 Parameters

obi_num	0
ascdsver	7.6.9
caldbver	3.2.3
date	2006-10-07T14:48:26
revision	2

sched_exp_time	0.0
ontime	8459.0117607713
ontime0	3937.8536150455
ontime1	4041.565351218
ontime2	3795.2494606078
ontime3	3879.5149561465
ontime6	4210.0977666974
ontime7	8459.0117607713
l1events	1553047

### 2.1.4 Events

	ccd 0	ccd 1	ccd 2	ccd 3	ccd 6	ccd 7
level 1 events	212670	219117	208606	213745	236867	462042
rejected events	31290	31655	32065	32291	34633	69386
rejected %	14%	14%	15%	15%	14%	15%

	ccd 0	ccd 1	ccd 2	ccd 3	ccd 6	ccd 7
grade 0 events	101187	103947	100326	103616	111140	69795
	47%	47%	48%	48%	46%	15%
grade 1 events	561	518	638	587	558	174
	0%	0%	0%	0%	0%	0%
grade 2 events	31684	33942	29767	30872	35450	122324
	14%	15%	14%	14%	14%	26%
grade 3 events	11931	11852	11655	11780	12712	28388
	5%	5%	5%	5%	5%	6%
grade 4 events	11653	11713	11606	11816	12493	27939
	5%	5%	5%	5%	5%	6%
grade 5 events	1984	2064	1933	2045	2341	8210
	0%	0%	0%	0%	0%	1%
grade 6 events	27110	28227	25347	25359	33181	149090
	12%	12%	12%	11%	14%	32%
grade 7 events	26560	26854	27334	27670	28992	56122
	12%	12%	13%	12%	12%	12%

## 2.2 Compared Parameters

Parameter	Planned	Actual	Parameter	Planned	Actual
Instrument	ACIS	ACIS	Obspar format version number	6	6
Detector	ACIS-012367	ACIS-012367	Obspar file type	PREDICTED	ACTUAL
Grating	NONE	NONE	Obspar update status	NONE	UPDATED
Data mode	FAINT	FAINT	On-chip summing requested	N	N
Observation mode	SECONDARY	SECONDARY	Subarray requested	NONE	NONE
Pointing RA	0	110.0739513728173	Alternating exposures requested	N	N
Pointing Dec	0	58.52516266887224	Primary exposure time	3.2	3.2
Pointing Roll	0.0	85.57009278502002			
SIM focus pos (mm)	-0.782348	-0.7809083437167272			
SIM defocus (mm)	0	0.7524282956875696			
SIM translation stage pos (mm)	-233.592463	250.4635187648994			
SIM translation stage offset (mm)	0	-0.007540371344731511			
Observation start time	151041424.061921	151041423.03721			
Observation start date	2002-10-15T03:57:04	2002-10-15T03:57:03			
Observation end time	151063789.562848	151063788.53814			
Observation end date	2002-10-15T10:09:50	2002-10-15T10:09:48			
Read mode	TIMED	TIMED			

## 2.3 Aspect



## **2.4 Star Slots**

## **2.5 FID Slots**



## A Summary

### A.1 Status

V&V Scientist	Jen Lauer
V&V Date (YYYY-MM-DD)	2006.10.08
V&V Edition	1
V&V Disposition and Status	OK
V&V Charge Time	8.35199996

### A.2 Comments

The ACIS focal plane temperature was above calibration limits for the entire observation.