

# V&V Reference Report

## L2 ASCDS Version : 7.6.9

Observation 60948 - L2 Version 001  
Chandra X-Ray Center

L2 Processing Date : Oct 13 2006

## Contents

<b>1</b>	<b>Front</b>	<b>2</b>
<b>2</b>	<b>OBI</b>	<b>3</b>
2.1	OBI . . . . .	3
2.1.1	Images . . . . .	3
2.1.2	Bias . . . . .	3
2.1.3	Parameters . . . . .	4
2.1.4	Events . . . . .	4
2.2	Compared Parameters . . . . .	5
2.3	Aspect . . . . .	6
2.4	Star Slots . . . . .	8
2.5	FID Slots . . . . .	8
<b>A</b>	<b>Summary</b>	<b>9</b>
A.1	Status . . . . .	9
A.2	Comments . . . . .	9

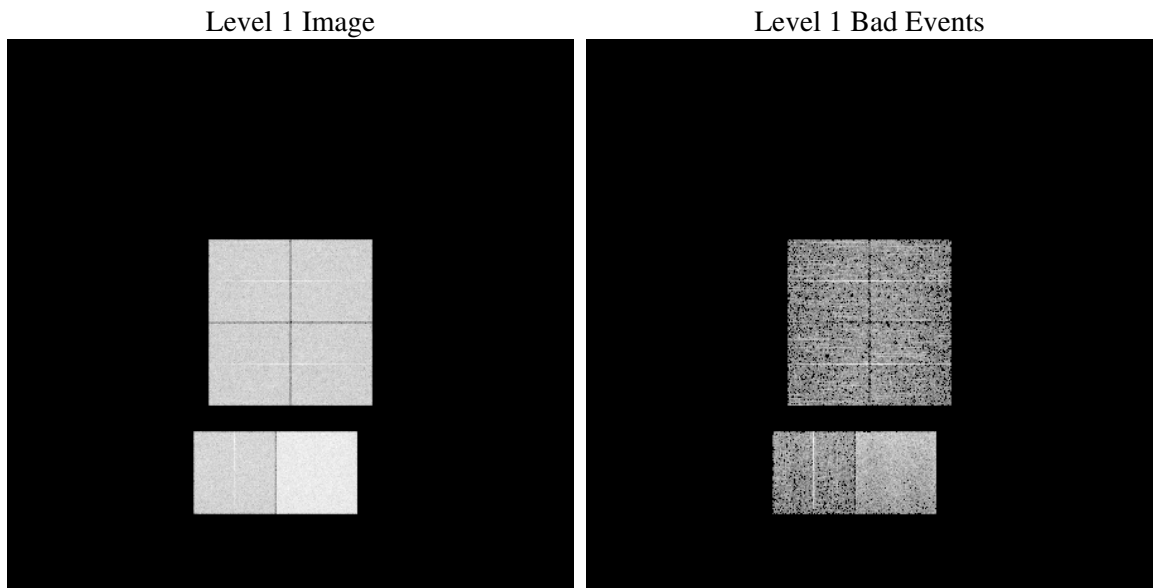
# 1 Front

seq_num	&#160
obs_id	60948
title	ACIS-012367 diagnostics
observer	CHANDRA engineering request/realtime commanding
object	&#160
dtcycle	0
cycle	P
ra_targ	0.0
dec_targ	0.0
ra_nom	84.309137202399
dec_nom	-3.4729173205871
roll_nom	38.273296484966
revision	3
ontime	4067.1999848485
livetime	4015.6986496665
ontime0	2177.7160027027
ontime1	2178.5851124525
ontime2	2061.9510846436
ontime3	2096.6914380491
ontime6	2249.0176571012
ontime7	4067.1999848485
l2events	632837

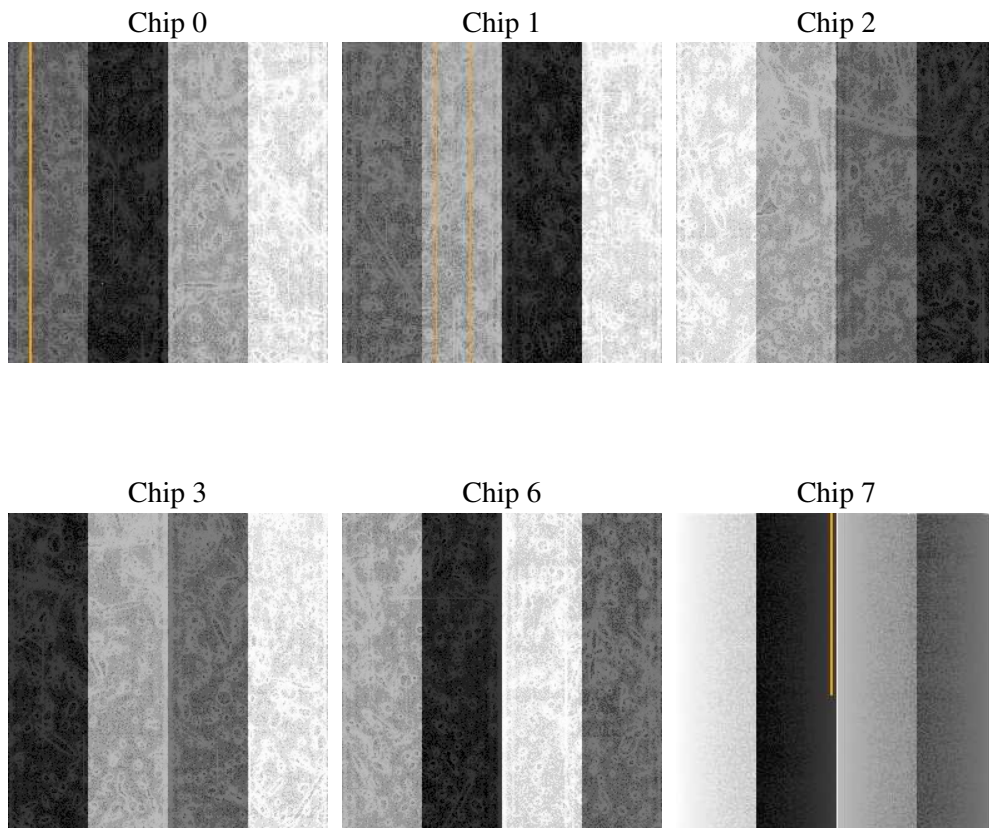
## 2 OBI

### 2.1 OBI

#### 2.1.1 Images



#### 2.1.2 Bias



### 2.1.3 Parameters

obi_num	1
ascdsver	7.6.9
caldbver	3.2.3
date	2006-10-13T22:49:43
revision	3

sched_exp_time	0.0
ontime	4077.1760197282
ontime0	2187.6920375824
ontime1	2187.691868484
ontime2	2071.0168006718
ontime3	2106.6674729288
ontime6	2258.9936919808
ontime7	4077.1760197282
l1events	763127

### 2.1.4 Events

	ccd 0	ccd 1	ccd 2	ccd 3	ccd 6	ccd 7
level 1 events	110445	110422	106653	107799	119412	208396
rejected events	14692	14553	14560	14451	15336	27822
rejected %	13%	13%	13%	13%	12%	13%

	ccd 0	ccd 1	ccd 2	ccd 3	ccd 6	ccd 7
grade 0 events	52956	53034	51933	52695	56908	32829
	47%	48%	48%	48%	47%	15%
grade 1 events	308	269	330	331	258	84
	0%	0%	0%	0%	0%	0%
grade 2 events	16845	17030	15710	15934	18174	54752
	15%	15%	14%	14%	15%	26%
grade 3 events	6259	6087	6073	5990	6378	13518
	5%	5%	5%	5%	5%	6%
grade 4 events	6265	5968	6027	6182	6449	13273
	5%	5%	5%	5%	5%	6%
grade 5 events	1047	997	977	1006	1117	3562
	0%	0%	0%	0%	0%	1%
grade 6 events	13851	14172	12764	12942	16625	66655
	12%	12%	11%	12%	13%	31%
grade 7 events	12914	12865	12839	12719	13503	23723
	11%	11%	12%	11%	11%	11%

## 2.2 Compared Parameters

Parameter	Planned	Actual	Parameter	Planned	Actual
Instrument	ACIS	ACIS	Obspar format version number	6	6
Detector	ACIS-012367	ACIS-012367	Obspar file type	PREDICTED	ACTUAL
Grating	NONE	NONE	Obspar update status	NONE	UPDATED
Data mode	FAINT	FAINT	On-chip summing requested	N	N
Observation mode	SECONDARY	SECONDARY	Subarray requested	NONE	NONE
Pointing RA	0	84.30913720239946	Alternating exposures requested	N	N
Pointing Dec	0	-3.472917320587078	Primary exposure time	3.2	3.2
Pointing Roll	0.0	38.27329648496612			
SIM focus pos (mm)	-0.782348	-0.6828225247311905			
SIM defocus (mm)	0	0.8505141146731063			
SIM translation stage pos (mm)	-233.592463	250.4635187648994			
SIM translation stage offset (mm)	0	-0.007540371344731511			
Observation start time	154841646.569934	154841645.54522			
Observation start date	2002-11-28T03:34:07	2002-11-28T03:34:05			
Observation end time	154846134.020121	154846132.99541			
Observation end date	2002-11-28T04:48:54	2002-11-28T04:48:52			
Read mode	TIMED	TIMED			

## 2.3 Aspect



## **2.4 Star Slots**

## **2.5 FID Slots**



## A Summary

### A.1 Status

V&V Scientist	Beth Sundheim
V&V Date (YYYY-MM-DD)	2006.10.15
V&V Edition	1
V&V Disposition and Status	OK
V&V Charge Time	4.06719998

### A.2 Comments