

V&V Reference Report

L2 ASCDS Version : 7.6.9

Observation 60943 - L2 Version 001
Chandra X-Ray Center

L2 Processing Date : Oct 13 2006

Contents

1	Front	2
2	OBI	3
2.1	OBI	3
2.1.1	Images	3
2.1.2	Bias	3
2.1.3	Parameters	4
2.1.4	Events	4
2.2	Compared Parameters	5
2.3	Aspect	6
2.4	Star Slots	8
2.5	FID Slots	8
A	Summary	9
A.1	Status	9
A.2	Comments	9

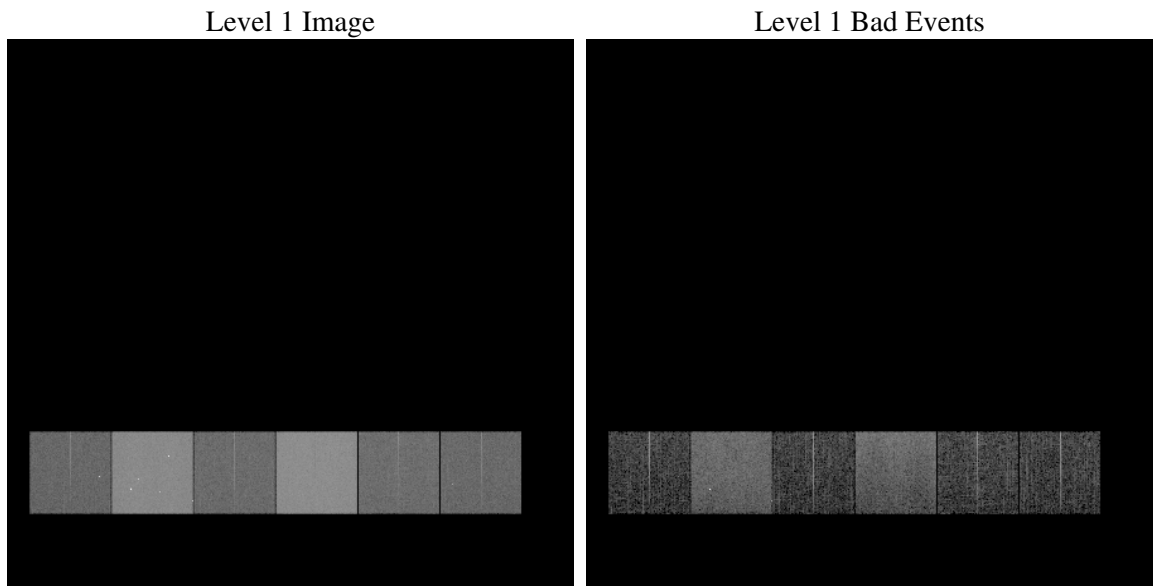
1 Front

seq_num	
obs_id	60943
title	ACIS-456789 diagnostics
observer	CHANDRA engineering request/realtime commanding
object	
dtcycle	0
cycle	P
ra_targ	0.0
dec_targ	0.0
ra_nom	126.5922101353
dec_nom	13.327572872867
roll_nom	72.477258542103
revision	2
ontime	8459.5821314752
livetime	8352.4618087777
ontime4	3024.5734443963
ontime5	8462.8641616404
ontime6	3241.6813666821
ontime7	8459.5821314752
ontime8	3371.4039604664
ontime9	3128.1219862103
l2events	1260071

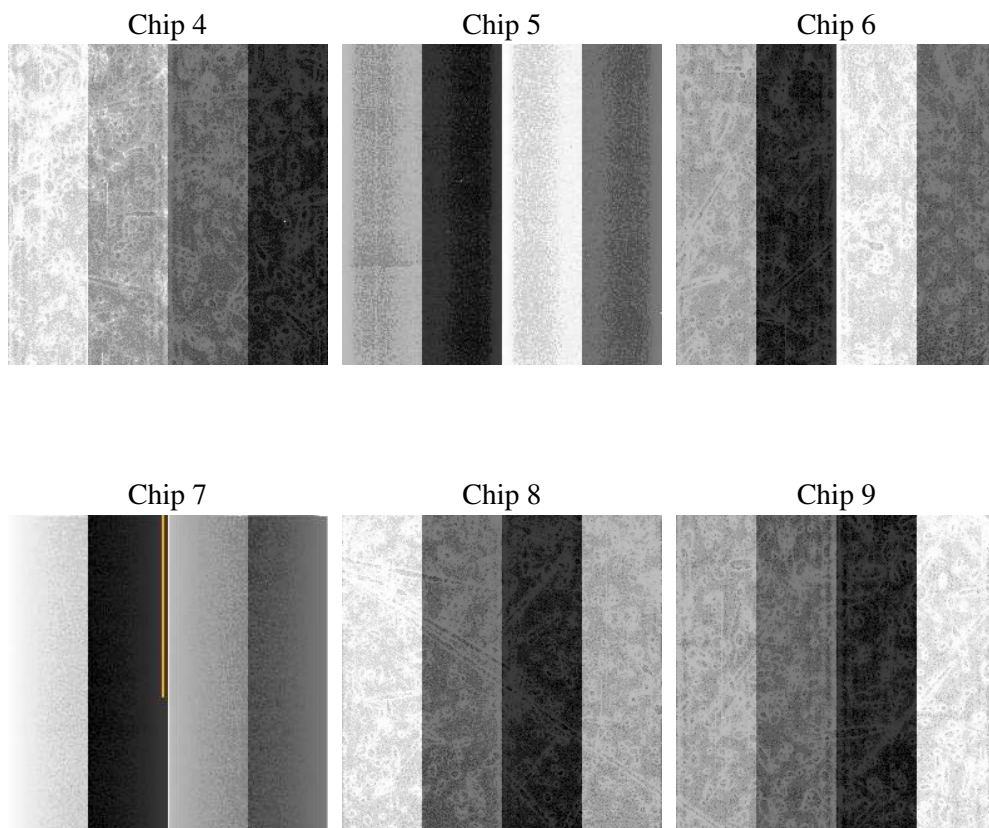
2 OBI

2.1 OBI

2.1.1 Images



2.1.2 Bias



2.1.3 Parameters

obi_num	1
ascdsver	7.6.9
caldbver	3.2.3
date	2006-10-13T23:53:10
revision	2

sched_exp_time	0.0
ontime	8462.2596326768
ontime4	3027.127825588
ontime5	8465.5006228387
ontime6	3244.2767878771
ontime7	8462.2596326768
ontime8	3373.9173016846
ontime9	3130.8405274153
l1events	1549494

2.1.4 Events

	ccd 4	ccd 5	ccd 6	ccd 7	ccd 8	ccd 9
level 1 events	158560	410980	178399	445561	188470	167524
rejected events	24332	68645	24943	59944	27594	25255
rejected %	15%	16%	13%	13%	14%	15%

	ccd 4	ccd 5	ccd 6	ccd 7	ccd 8	ccd 9
grade 0 events	77645	40949	83309	69476	88596	78500
	48%	9%	46%	15%	47%	46%
grade 1 events	572	216	410	185	505	443
	0%	0%	0%	0%	0%	0%
grade 2 events	21432	164321	26642	117068	27746	24130
	13%	39%	14%	26%	14%	14%
grade 3 events	8973	11092	9541	28041	10301	9154
	5%	2%	5%	6%	5%	5%
grade 4 events	8728	10778	9372	27976	10367	8968
	5%	2%	5%	6%	5%	5%
grade 5 events	1527	7882	1802	7707	1979	1728
	0%	1%	1%	1%	1%	1%
grade 6 events	17564	115331	24750	143198	24013	21659
	11%	28%	13%	32%	12%	12%
grade 7 events	22119	60411	22573	51910	24963	22942
	13%	14%	12%	11%	13%	13%

2.2 Compared Parameters

Parameter	Planned	Actual	Parameter	Planned	Actual
Instrument	ACIS	ACIS	Obspar format version number	6	6
Detector	ACIS-456789	ACIS-456789	Obspar file type	PREDICTED	ACTUAL
Grating	NONE	NONE	Obspar update status	NONE	UPDATED
Data mode	FAINT	FAINT	On-chip summing requested	N	N
Observation mode	SECONDARY	SECONDARY	Subarray requested	NONE	NONE
Pointing RA	0	126.5922101353038	Alternating exposures requested	N	N
Pointing Dec	0	13.32757287286655	Primary exposure time	0.000000	3.2
Pointing Roll	0.0	72.47725854210336			
SIM focus pos (mm)	-0.684267	-0.6828225247311905			
SIM defocus (mm)	0	0.8505141146731063			
SIM translation stage pos (mm)	-190.132523	250.466033080201			
SIM translation stage offset (mm)	0	-0.01005468664627074			
Observation start time	155155382.683004	155155381.6583			
Observation start date	2002-12-01T18:43:03	2002-12-01T18:43:01			
Observation end time	155177440.683923	155177439.65922			
Observation end date	2002-12-02T00:50:41	2002-12-02T00:50:39			
Read mode	TIMED	TIMED			

2.3 Aspect

2.4 Star Slots

2.5 FID Slots

A Summary

A.1 Status

V&V Scientist	Beth Sundheim
V&V Date (YYYY-MM-DD)	2006.10.15
V&V Edition	1
V&V Disposition and Status	OK
V&V Charge Time	8.45958213

A.2 Comments