

V&V Reference Report

L2 ASCDS Version : 8.4.5

Observation 60929 - L2 Version 3
Chandra X-Ray Center

L2 Processing Date : Oct 18 2012

Contents

1	Front	2
2	OBI	3
2.1	OBI	3
2.1.1	Images	3
2.1.2	Bias	3
2.1.3	Parameters	4
2.1.4	Events	4
2.2	Compared Parameters	5
2.3	Star Slots	6
2.4	FID Slots	6
A	Summary	7
A.1	Status	7
A.2	Comments	7

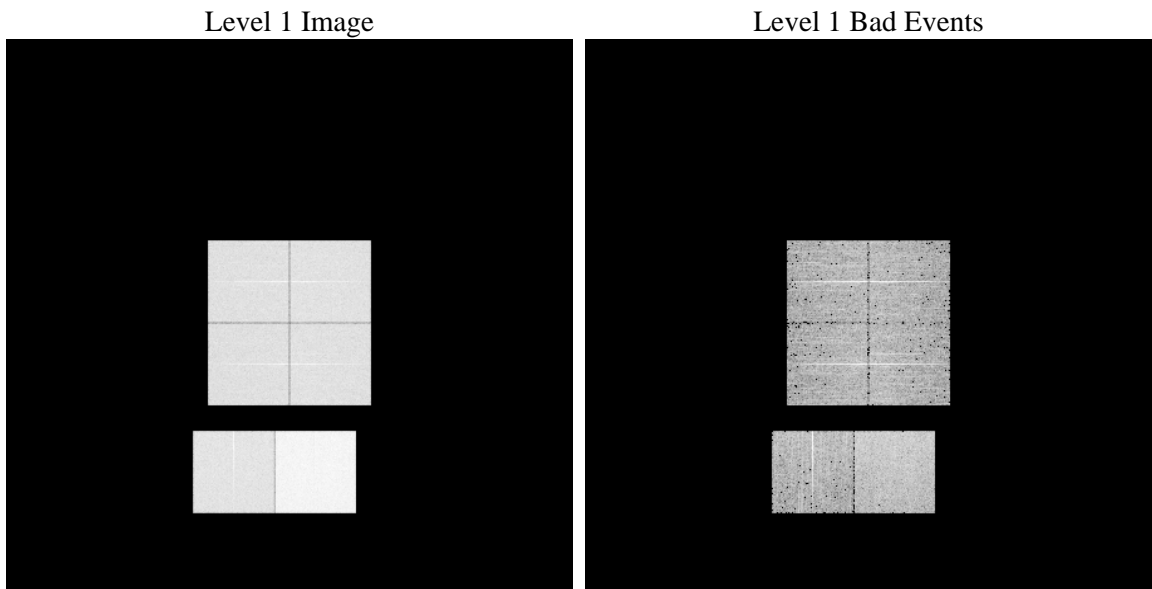
1 Front

seq_num	 	Sequence number
obs_id	60929	Observation id
title	ACIS-012367 diagnostics	Proposal title
observer	CHANDRA engineering request/realtime commanding	Principal investig
object	 	Source name
dtcycle	0	
cycle	P	events from which exps? Prim/Second/Both
ra_targ	0.0	Observer's specified target RA [deg]
dec_targ	0.0	Observer's specified target Dec [deg]
ra_nom	194.00178252993	Nominal RA [deg]
dec_nom	26.028532086816	Nominal Dec [deg]
roll_nom	53.927432675959	Nominal Roll [deg]
revision	3	Processing version of data
ontime	8467.1852461398	Sum of GTIs [s]
livetime	8359.9686482263	Livetime [s]
ontime0	4273.3862064183	Sum of GTIs [s]
ontime1	4441.9858696759	Sum of GTIs [s]
ontime2	4127.5408110917	Sum of GTIs [s]
ontime3	4263.6079420745	Sum of GTIs [s]
ontime6	4578.0396506488	Sum of GTIs [s]
ontime7	8467.1852461398	Sum of GTIs [s]
l2events	1298816	Number of level 2 events

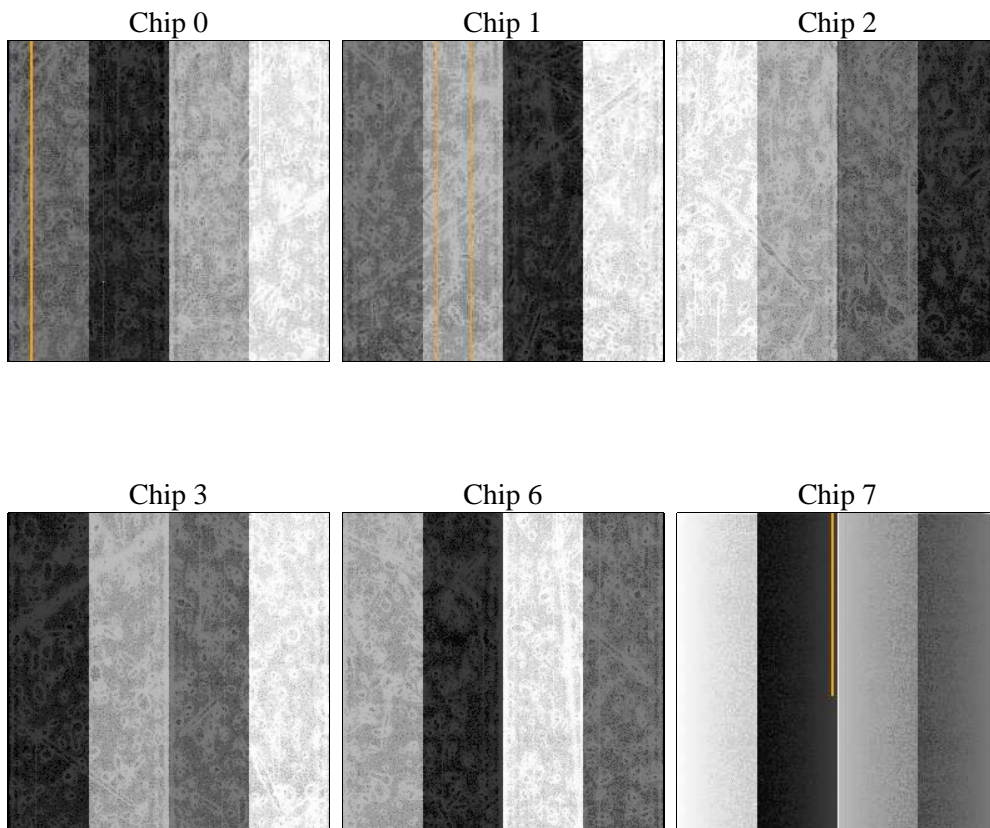
2 OBI

2.1 OBI

2.1.1 Images



2.1.2 Bias



2.1.3 Parameters

obi_num	0	Obi number	sched_exp_time	0.0	[s] Scheduled observation exposure time
ascdsver	8.4.5	Processing system revision	ontime	8467.1852461398	Sum of GTIs [s]
caldsver	4.5.2	 	ontime0	4273.3862064183	Sum of GTIs [s]
date	2012-10-18T13:28:08	Date and time of file creation	ontime1	4441.9858696759	Sum of GTIs [s]
revision	3	Processing version of data	ontime2	4127.5408110917	Sum of GTIs [s]
			ontime3	4263.6079420745	Sum of GTIs [s]
			ontime6	4578.0396506488	Sum of GTIs [s]
			ontime7	8467.1852461398	Sum of GTIs [s]
			l1events	1550259	Number of level 1 events

2.1.4 Events

	ccd 0	ccd 1	ccd 2	ccd 3	ccd 6	ccd 7		ccd 0	ccd 1	ccd 2	ccd 3	ccd 6	ccd 7
level 1 events	215845	223747	211483	218976	243008	437200	grade 0 events	103070	107415	102550	106303	114953	98274
rejected events	28842	28701	29076	29669	31328	45827		47%	48%	48%	48%	47%	22%
rejected %	13%	12%	13%	13%	12%	10%	grade 1 events	583	514	640	635	556	266
								0%	0%	0%	0%	0%	0%
							grade 2 events	32418	34592	30892	32326	36448	85876
								15%	15%	14%	14%	14%	19%
							grade 3 events	12149	12606	11832	12275	13294	39707
								5%	5%	5%	5%	5%	9%
							grade 4 events	12072	12282	11604	12497	12963	39120
								5%	5%	5%	5%	5%	8%
							grade 5 events	2052	2062	1935	2066	2342	8829
								0%	0%	0%	0%	0%	2%
							grade 6 events	27294	28151	25529	25906	34022	128396
								12%	12%	12%	11%	14%	29%
							grade 7 events	26207	26125	26501	26968	28430	36732
								12%	11%	12%	12%	11%	8%

2.2 Compared Parameters

Parameter	Planned	Actual
Instrument	ACIS	ACIS
Detector	ACIS-012367	ACIS-012367
Grating	NONE	NONE
Data mode	FAINT	FAINT
Observation mode	SECONDARY	SECONDARY
[deg] Pointing RA	0	194.0017825299267
[deg] Pointing Dec	0	26.0285320868159
[deg] Pointing Roll	0.0	53.92743267595949
[mm] SIM focus pos	-0.782348	-0.6828225247311905
[mm] SIM defocus	0	0.8505141146731063
[mm] SIM translation stage pos	-233.592463	250.466033080201
[mm] SIM translation stage offset	0	-0.01005468664627074
[s] Observation start time (MET)	155379494.842359	155379493.81765
Observation start date	2002-12-04T08:58:15	2002-12-04T08:58:13
[s] Observation end time (MET)	155401675.843284	155401674.81857
Observation end date	2002-12-04T15:07:56	2002-12-04T15:07:54
Read mode	TIMED	TIMED

Parameter	Planned	Actual
Obspar format version number	7	7
Obspar file type	PREDICTED	ACTUAL
Obspar update status	NONE	UPDATED
On-chip summing requested	N	N
Subarray requested	NONE	NONE
Alternating exposures requested	N	N
[s] Primary exposure time	0.000000	3.2

2.3 Star Slots

2.4 FID Slots

A Summary

A.1 Status

V&V Scientist	Jen Lauer
V&V Date (YYYY-MM-DD)	2012.10.30
V&V Edition	1
V&V Disposition and Status	OK
V&V Charge Time	8.4671852461398

A.2 Comments