

V&V Reference Report

L2 ASCDS Version : 7.6.9

Observation 60926 - L2 Version 001
Chandra X-Ray Center

L2 Processing Date : Oct 15 2006

Contents

| | | |
|----------|-------------------------------|----------|
| 1 | Front | 2 |
| 2 | OBI | 3 |
| 2.1 | OBI | 3 |
| 2.1.1 | Images | 3 |
| 2.1.2 | Bias | 3 |
| 2.1.3 | Parameters | 4 |
| 2.1.4 | Events | 4 |
| 2.2 | Compared Parameters | 5 |
| 2.3 | Aspect | 6 |
| 2.4 | Star Slots | 8 |
| 2.5 | FID Slots | 8 |
| A | Summary | 9 |
| A.1 | Status | 9 |
| A.2 | Comments | 9 |

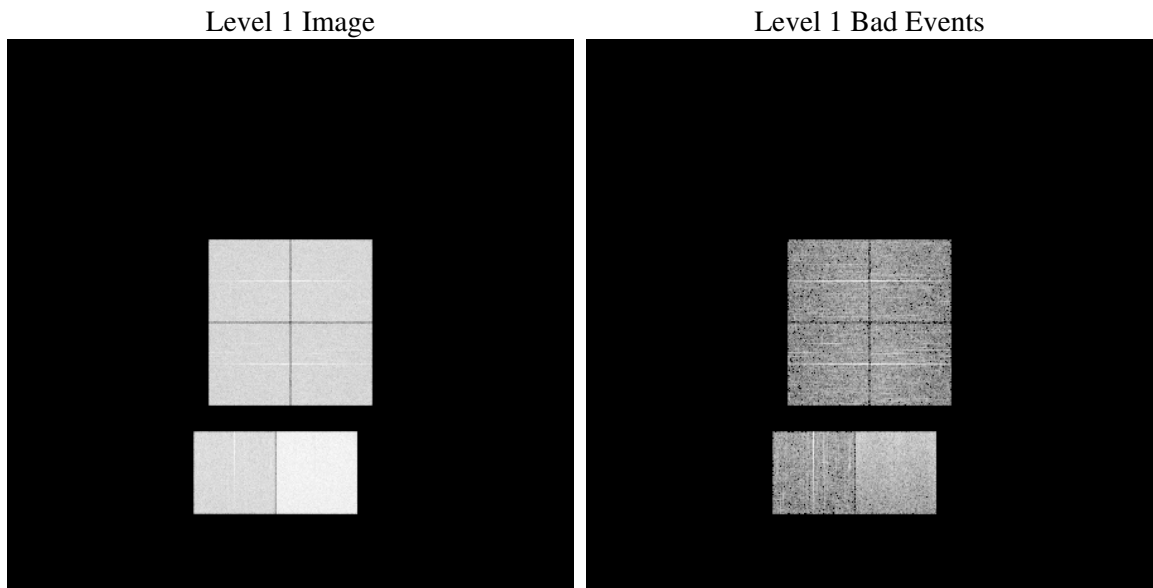
1 Front

| | |
|----------|---|
| seq_num | |
| obs_id | 60926 |
| title | ACIS-012367 diagnostics |
| observer | CHANDRA engineering request/realtime commanding |
| object | |
| dtcycle | 0 |
| cycle | P |
| ra_targ | 0.0 |
| dec_targ | 0.0 |
| ra_nom | 107.88349010636 |
| dec_nom | 25.524398327198 |
| roll_nom | 88.502121280877 |
| revision | 2 |
| ontime | 7797.3144398928 |
| livetime | 7698.5801494758 |
| ontime0 | 3979.4881165028 |
| ontime1 | 4102.6881682873 |
| ontime2 | 3846.6892312467 |
| ontime3 | 3833.5613396764 |
| ontime6 | 4212.9633660316 |
| ontime7 | 7797.3144398928 |
| l2events | 1188940 |

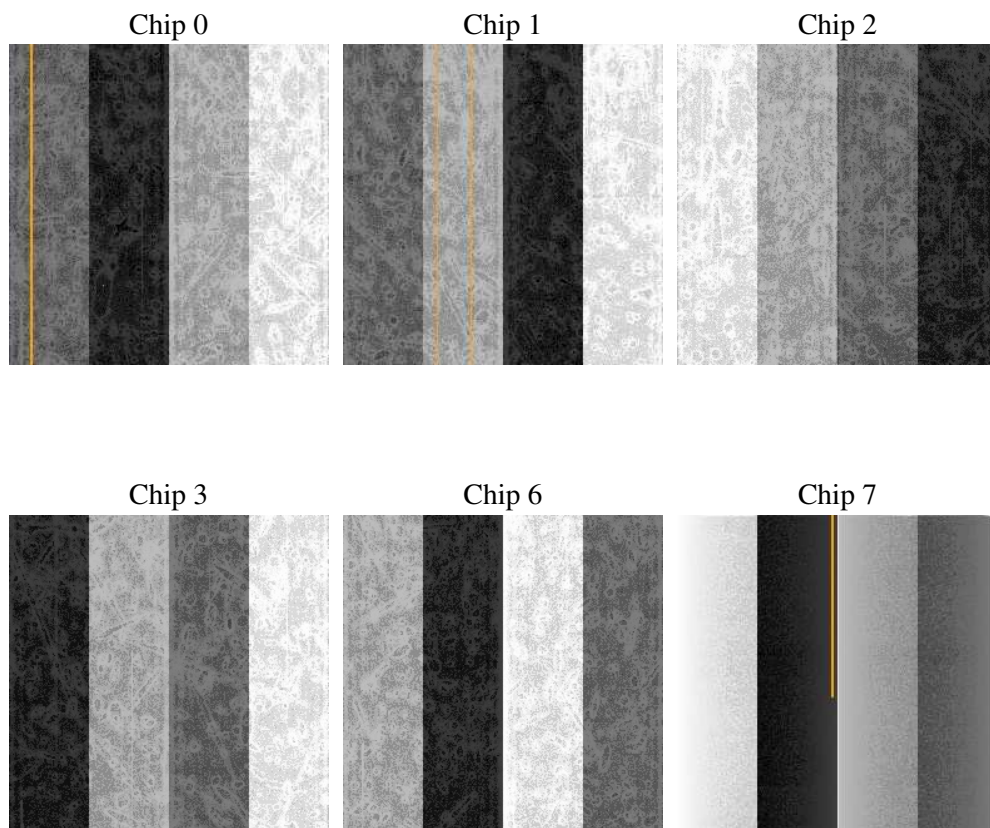
2 OBI

2.1 OBI

2.1.1 Images



2.1.2 Bias



2.1.3 Parameters

| | |
|----------|---------------------|
| obi_num | 0 |
| ascdsver | 7.6.9 |
| caldbver | 3.2.3 |
| date | 2006-10-15T07:46:23 |
| revision | 2 |

| | |
|----------------|-----------------|
| sched_exp_time | 0.0 |
| ontime | 7797.8503551185 |
| ontime0 | 3979.9829917252 |
| ontime1 | 4103.1420035064 |
| ontime2 | 3847.1020264626 |
| ontime3 | 3834.1382949054 |
| ontime6 | 4213.335121274 |
| ontime7 | 7797.8503551185 |
| l1events | 1430719 |

2.1.4 Events

| | ccd 0 | ccd 1 | ccd 2 | ccd 3 | ccd 6 | ccd 7 |
|-----------------|--------|--------|--------|--------|--------|--------|
| level 1 events | 201306 | 206798 | 197848 | 198928 | 224211 | 401628 |
| rejected events | 26555 | 26120 | 25700 | 27410 | 29483 | 52552 |
| rejected % | 13% | 12% | 12% | 13% | 13% | 13% |

| | ccd 0 | ccd 1 | ccd 2 | ccd 3 | ccd 6 | ccd 7 |
|----------------|-------|-------|-------|-------|--------|--------|
| grade 0 events | 96445 | 99229 | 96691 | 96401 | 106001 | 64701 |
| | 47% | 47% | 48% | 48% | 47% | 16% |
| grade 1 events | 551 | 505 | 559 | 521 | 536 | 156 |
| | 0% | 0% | 0% | 0% | 0% | 0% |
| grade 2 events | 30663 | 32230 | 29101 | 29386 | 33521 | 104692 |
| | 15% | 15% | 14% | 14% | 14% | 26% |
| grade 3 events | 11113 | 11406 | 11327 | 11102 | 12020 | 26012 |
| | 5% | 5% | 5% | 5% | 5% | 6% |
| grade 4 events | 11365 | 11379 | 10949 | 11068 | 12132 | 26111 |
| | 5% | 5% | 5% | 5% | 5% | 6% |
| grade 5 events | 1841 | 1903 | 1740 | 1936 | 2034 | 6934 |
| | 0% | 0% | 0% | 0% | 0% | 1% |
| grade 6 events | 25165 | 26434 | 24080 | 23561 | 31054 | 127560 |
| | 12% | 12% | 12% | 11% | 13% | 31% |
| grade 7 events | 24163 | 23712 | 23401 | 24953 | 26913 | 45462 |
| | 12% | 11% | 11% | 12% | 12% | 11% |

2.2 Compared Parameters

| Parameter | Planned | Actual | Parameter | Planned | Actual |
|-----------------------------------|---------------------|----------------------|---------------------------------|-----------|---------|
| Instrument | ACIS | ACIS | Obspar format version number | 6 | 6 |
| Detector | ACIS-012367 | ACIS-012367 | Obspar file type | PREDICTED | ACTUAL |
| Grating | NONE | NONE | Obspar update status | NONE | UPDATED |
| Data mode | FAINT | FAINT | On-chip summing requested | N | N |
| Observation mode | SECONDARY | SECONDARY | Subarray requested | NONE | NONE |
| Pointing RA | 0 | 107.8834901063617 | Alternating exposures requested | N | N |
| Pointing Dec | 0 | 25.52439832719807 | Primary exposure time | 0.000000 | 3.2 |
| Pointing Roll | 0.0 | 88.50212128087696 | | | |
| SIM focus pos (mm) | -0.782348 | -0.6828225247311905 | | | |
| SIM defocus (mm) | 0 | 0.8505141146731063 | | | |
| SIM translation stage pos (mm) | -233.592463 | 250.466033080201 | | | |
| SIM translation stage offset (mm) | 0 | -0.01005468664627074 | | | |
| Observation start time | 155808197.010255 | 155808195.98553 | | | |
| Observation start date | 2002-12-09T08:03:17 | 2002-12-09T08:03:15 | | | |
| Observation end time | 155840726.411613 | 155840725.38689 | | | |
| Observation end date | 2002-12-09T17:05:26 | 2002-12-09T17:05:25 | | | |
| Read mode | TIMED | TIMED | | | |

2.3 Aspect

2.4 Star Slots

2.5 FID Slots

A Summary

A.1 Status

| | |
|----------------------------|---------------|
| V&V Scientist | Beth Sundheim |
| V&V Date (YYYY-MM-DD) | 2006.10.15 |
| V&V Edition | 1 |
| V&V Disposition and Status | OK |
| V&V Charge Time | 7.79731443 |

A.2 Comments