

V&V Reference Report

L2 ASCDS Version : 7.6.9

Observation 60921 - L2 Version 001
Chandra X-Ray Center

L2 Processing Date : Oct 15 2006

Contents

1	Front	2
2	OBI	3
2.1	OBI	3
2.1.1	Images	3
2.1.2	Bias	3
2.1.3	Parameters	4
2.1.4	Events	4
2.2	Compared Parameters	5
2.3	Aspect	6
2.4	Star Slots	8
2.5	FID Slots	8
A	Summary	9
A.1	Status	9
A.2	Comments	9

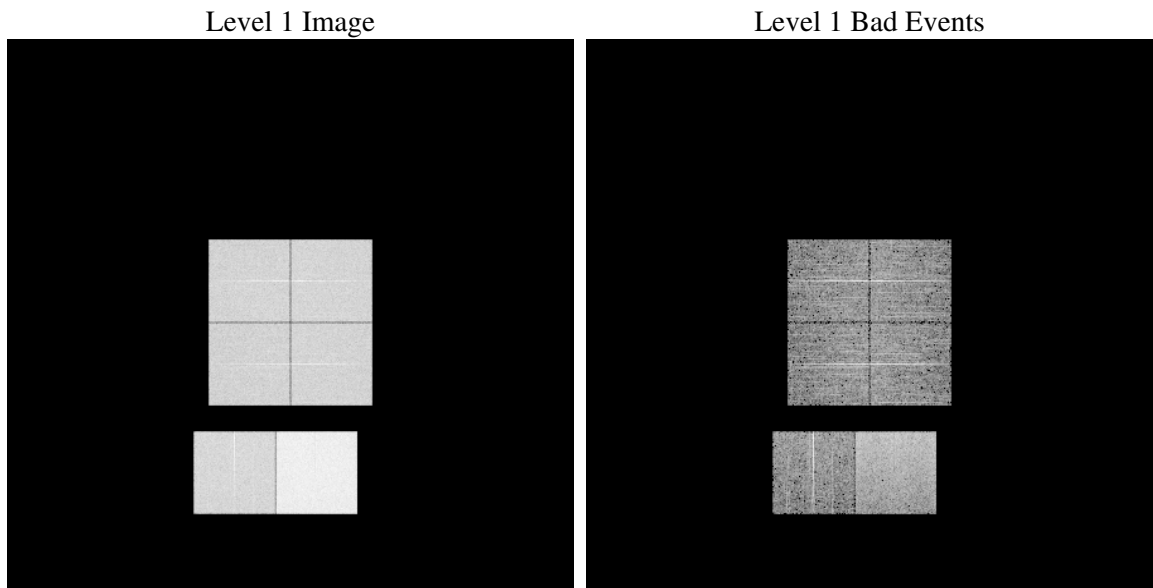
1 Front

seq_num	
obs_id	60921
title	ACIS-012367 diagnostics
observer	CHANDRA engineering request/realtime commanding
object	
dtcycle	0
cycle	P
ra_targ	0.0
dec_targ	0.0
ra_nom	57.013218089876
dec_nom	27.973906129528
roll_nom	261.21310638308
revision	2
ontime	8459.1086337864
livetime	8351.9943068017
ontime0	4378.7617239952
ontime1	4424.1757207513
ontime2	4161.6956483126
ontime3	4274.9676896036
ontime6	4602.5128785968
ontime7	8459.1086337864
l2events	1286396

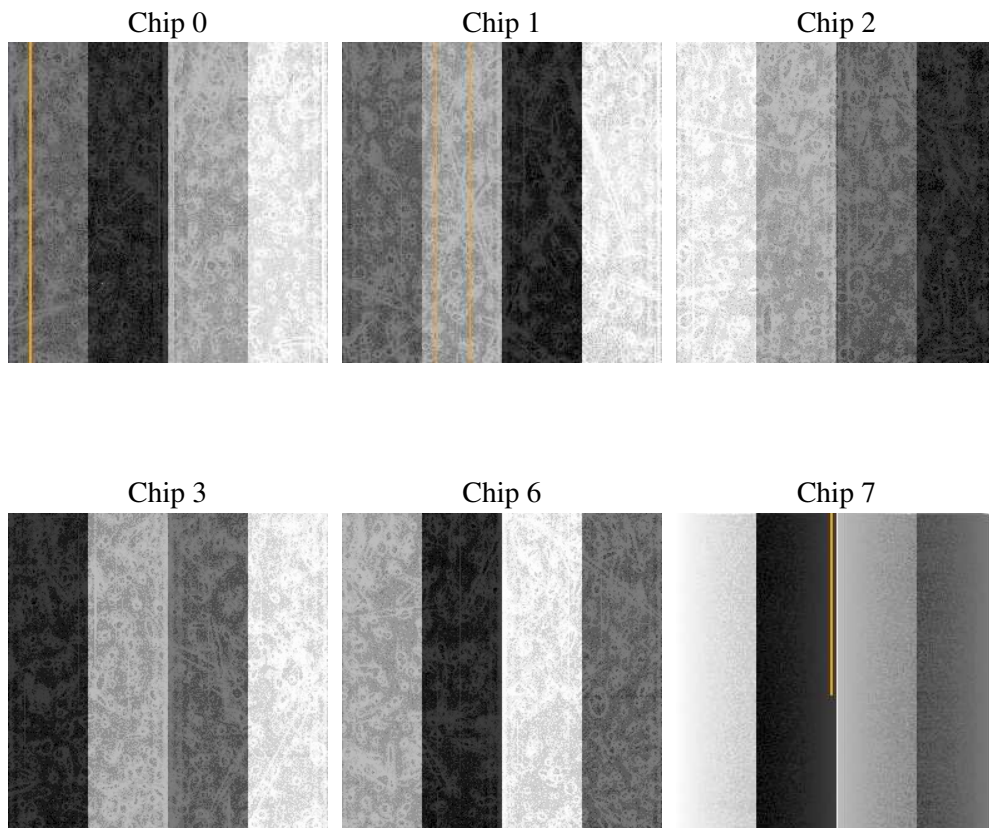
2 OBI

2.1 OBI

2.1.1 Images



2.1.2 Bias



2.1.3 Parameters

obi_num	0
ascdsver	7.6.9
caldbver	3.2.3
date	2006-10-15T08:27:56
revision	2

sched_exp_time	0.0
ontime	8462.2600528002
ontime0	4381.8721030056
ontime1	4427.2450597584
ontime2	4164.7239473164
ontime3	4278.1601486206
ontime6	4605.5001376271
ontime7	8462.2600528002
l1events	1549509

2.1.4 Events

	ccd 0	ccd 1	ccd 2	ccd 3	ccd 6	ccd 7
level 1 events	219911	223998	211247	218782	241501	434070
rejected events	28764	30145	28705	30082	30080	56925
rejected %	13%	13%	13%	13%	12%	13%

	ccd 0	ccd 1	ccd 2	ccd 3	ccd 6	ccd 7
grade 0 events	105753	106773	102350	106201	115370	69876
	48%	47%	48%	48%	47%	16%
grade 1 events	584	543	625	616	523	170
	0%	0%	0%	0%	0%	0%
grade 2 events	33322	34153	30955	32201	36555	113245
	15%	15%	14%	14%	15%	26%
grade 3 events	12385	12362	11903	12383	13092	28703
	5%	5%	5%	5%	5%	6%
grade 4 events	12335	12378	11861	12307	13046	27904
	5%	5%	5%	5%	5%	6%
grade 5 events	2012	2039	1873	2109	2300	7620
	0%	0%	0%	0%	0%	1%
grade 6 events	27510	28334	25629	25756	33507	137561
	12%	12%	12%	11%	13%	31%
grade 7 events	26010	27416	26051	27209	27108	48991
	11%	12%	12%	12%	11%	11%

2.2 Compared Parameters

Parameter	Planned	Actual	Parameter	Planned	Actual
Instrument	ACIS	ACIS	Obspar format version number	6	6
Detector	ACIS-012367	ACIS-012367	Obspar file type	PREDICTED	ACTUAL
Grating	NONE	NONE	Obspar update status	NONE	UPDATED
Data mode	FAINT	FAINT	On-chip summing requested	N	N
Observation mode	SECONDARY	SECONDARY	Subarray requested	NONE	NONE
Pointing RA	0	57.01321808987629	Alternating exposures requested	N	N
Pointing Dec	0	27.97390612952844	Primary exposure time	0.000000	3.2
Pointing Roll	0.0	261.213106383084			
SIM focus pos (mm)	-0.782348	-1.428180813131781			
SIM defocus (mm)	0	0.1051558262725154			
SIM translation stage pos (mm)	-233.592463	250.466033080201			
SIM translation stage offset (mm)	0	-0.01005468664627074			
Observation start time	156063485.570911	156063484.54618			
Observation start date	2002-12-12T06:58:06	2002-12-12T06:58:04			
Observation end time	156086865.821888	156086864.79716			
Observation end date	2002-12-12T13:27:46	2002-12-12T13:27:44			
Read mode	TIMED	TIMED			

2.3 Aspect

2.4 Star Slots

2.5 FID Slots

A Summary

A.1 Status

V&V Scientist	Beth Sundheim
V&V Date (YYYY-MM-DD)	2006.10.15
V&V Edition	1
V&V Disposition and Status	OK
V&V Charge Time	8.45910863

A.2 Comments