

V&V Reference Report

L2 ASCDS Version : 8.4.5

Observation 60918 - L2 Version 3
Chandra X-Ray Center

L2 Processing Date : Oct 19 2012

Contents

1	Front	2
2	OBI	3
2.1	OBI	3
2.1.1	Images	3
2.1.2	Bias	3
2.1.3	Parameters	4
2.1.4	Events	4
2.2	Compared Parameters	5
2.3	Star Slots	6
2.4	FID Slots	6
A	Summary	7
A.1	Status	7
A.2	Comments	7

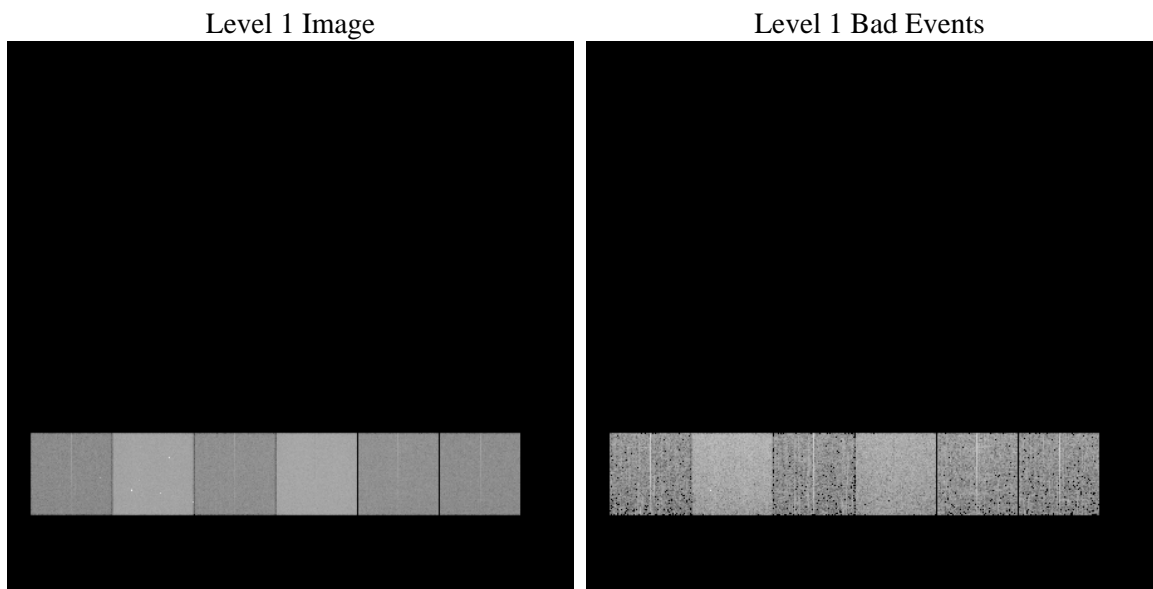
1 Front

seq_num	 	Sequence number
obs_id	60918	Observation id
title	ACIS-456789 diagnostics	Proposal title
observer	CHANDRA engineering request/realtime commanding	Principal investig
object	 	Source name
dtcycle	0	
cycle	P	events from which exps? Prim/Second/Both
ra_targ	0.0	Observer's specified target RA [deg]
dec_targ	0.0	Observer's specified target Dec [deg]
ra_nom	116.92488099695	Nominal RA [deg]
dec_nom	44.583838834623	Nominal Dec [deg]
roll_nom	118.19204119161	Nominal Roll [deg]
revision	3	Processing version of data
ontime	7788.7999709845	Sum of GTIs [s]
livetime	7690.1734958996	Livetime [s]
ontime4	2975.2707598805	Sum of GTIs [s]
ontime5	7788.7618561387	Sum of GTIs [s]
ontime6	3253.9990545809	Sum of GTIs [s]
ontime7	7788.7999709845	Sum of GTIs [s]
ontime8	3387.3771020174	Sum of GTIs [s]
ontime9	3153.4834069908	Sum of GTIs [s]
l2events	1184099	Number of level 2 events

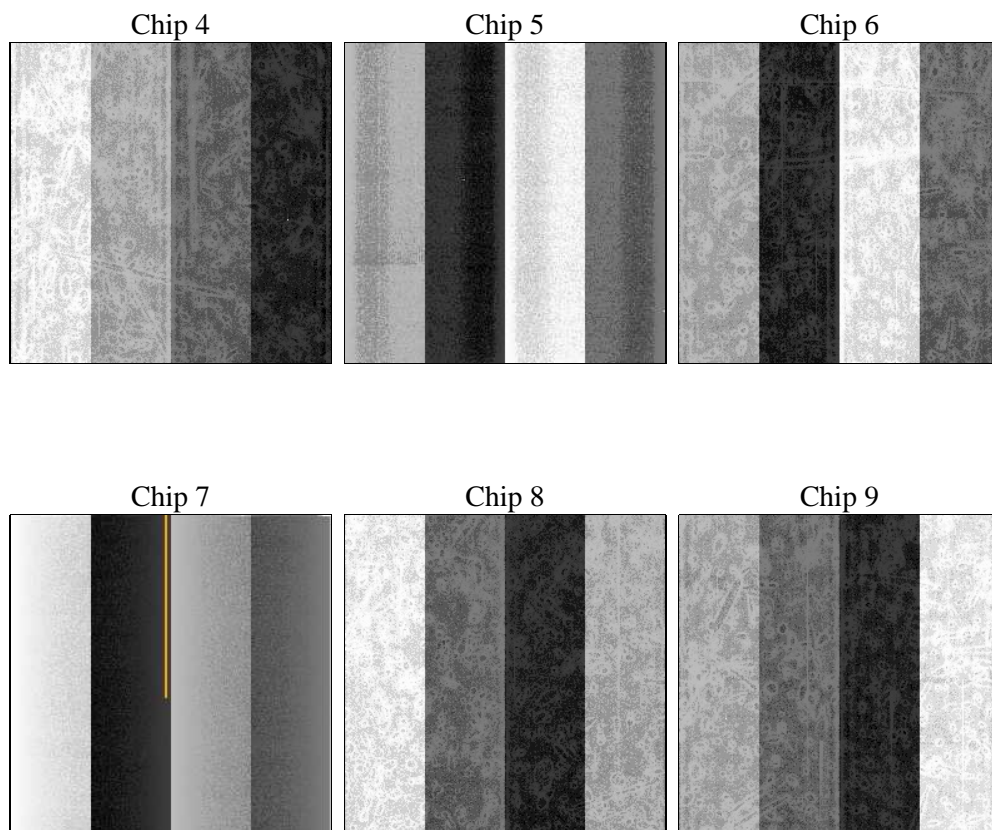
2 OBI

2.1 OBI

2.1.1 Images



2.1.2 Bias



2.1.3 Parameters

obi_num	0	Obi number	sched_exp_time	0.0	[s] Scheduled observation exposure time
ascdsver	8.4.5	Processing system revision	ontime	7788.7999709845	Sum of GTIs [s]
caldsver	4.5.2	 	ontime4	2975.2707598805	Sum of GTIs [s]
date	2012-10-19T11:56:09	Date and time of file creation	ontime5	7788.7618561387	Sum of GTIs [s]
revision	3	Processing version of data	ontime6	3253.9990545809	Sum of GTIs [s]
			ontime7	7788.7999709845	Sum of GTIs [s]
			ontime8	3387.3771020174	Sum of GTIs [s]
			ontime9	3153.4834069908	Sum of GTIs [s]
			l1events	1425563	Number of level 1 events

2.1.4 Events

	ccd 4	ccd 5	ccd 6	ccd 7	ccd 8	ccd 9		ccd 4	ccd 5	ccd 6	ccd 7	ccd 8	ccd 9
level 1 events	147912	367573	172179	396030	181627	160242	grade 0 events	72790	79505	81635	89438	85925	76383
rejected events	22152	49272	22942	39652	25853	21815		49%	21%	47%	22%	47%	47%
rejected %	14%	13%	13%	10%	14%	13%	grade 1 events	519	467	379	240	429	417
								0%	0%	0%	0%	0%	0%
							grade 2 events	20158	111634	25905	78919	27209	23668
								13%	30%	15%	19%	14%	14%
							grade 3 events	8391	20904	9346	36098	10092	9000
								5%	5%	5%	9%	5%	5%
							grade 4 events	8396	20775	9116	35624	10050	8784
								5%	5%	5%	8%	5%	5%
							grade 5 events	1427	8706	1648	7800	1868	1628
								0%	2%	0%	1%	1%	1%
							grade 6 events	16025	85609	23235	116454	22646	20592
								10%	23%	13%	29%	12%	12%
							grade 7 events	20206	39973	20915	31457	23408	19770
								13%	10%	12%	7%	12%	12%

2.2 Compared Parameters

Parameter	Planned	Actual	Parameter	Planned	Actual
Instrument	ACIS	ACIS	Obspar format version number	7	7
Detector	ACIS-456789	ACIS-456789	Obspar file type	PREDICTED	ACTUAL
Grating	NONE	NONE	Obspar update status	NONE	UPDATED
Data mode	FAINT	FAINT	On-chip summing requested	N	N
Observation mode	SECONDARY	SECONDARY	Subarray requested	NONE	NONE
[deg] Pointing RA	0	116.9248809969534	Alternating exposures requested	N	N
[deg] Pointing Dec	0	44.58383883462311	[s] Primary exposure time	0.000000	3.2
[deg] Pointing Roll	0.0	118.1920411916096			
[mm] SIM focus pos	-0.684267	-0.6828225247311905			
[mm] SIM defocus	0	0.8505141146731063			
[mm] SIM translation stage pos	-190.132523	250.466033080201			
[mm] SIM translation stage offset	0	-0.01005468664627074			
[s] Observation start time (MET)	156493708.838858	156493707.81412			
Observation start date	2002-12-17T06:28:29	2002-12-17T06:28:27			
[s] Observation end time (MET)	156523526.090102	156523525.06537			
Observation end date	2002-12-17T14:45:26	2002-12-17T14:45:25			
Read mode	TIMED	TIMED			

2.3 Star Slots

2.4 FID Slots

A Summary

A.1 Status

V&V Scientist	Beth Sundheim
V&V Date (YYYY-MM-DD)	2012.11.19
V&V Edition	1
V&V Disposition and Status	OK
V&V Charge Time	7.7887999709845

A.2 Comments