

V&V Reference Report

L2 ASCDS Version : 7.6.9

Observation 60910 - L2 Version 001
Chandra X-Ray Center

L2 Processing Date : Oct 16 2006

Contents

1	Front	2
2	OBI	3
2.1	OBI	3
2.1.1	Images	3
2.1.2	Bias	3
2.1.3	Parameters	4
2.1.4	Events	4
2.2	Compared Parameters	5
2.3	Aspect	6
2.4	Star Slots	8
2.5	FID Slots	8
A	Summary	9
A.1	Status	9
A.2	Comments	9

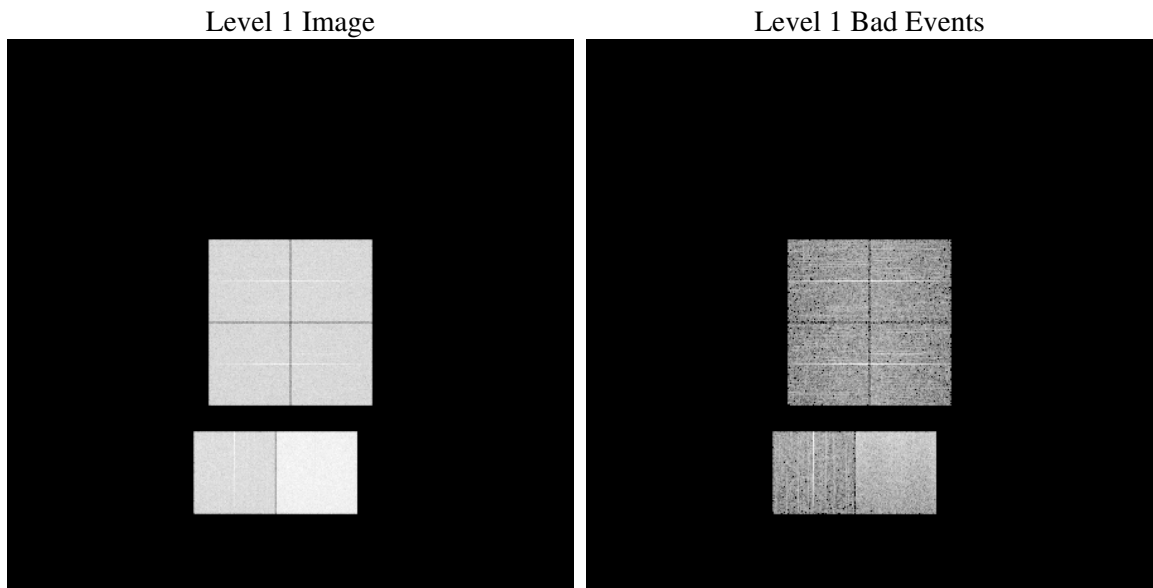
1 Front

seq_num	
obs_id	60910
title	ACIS-012367 diagnostics
observer	CHANDRA engineering request/realtime commanding
object	
dtcycle	0
cycle	P
ra_targ	0.0
dec_targ	0.0
ra_nom	114.99738520262
dec_nom	14.228472063685
roll_nom	62.209400072553
revision	2
ontime	8463.5585294962
livetime	8356.3878552526
ontime0	4467.4748181999
ontime1	4574.4689425826
ontime2	4279.5791080594
ontime3	4386.3680236936
ontime6	4694.4685866535
ontime7	8463.5585294962
l2events	1287458

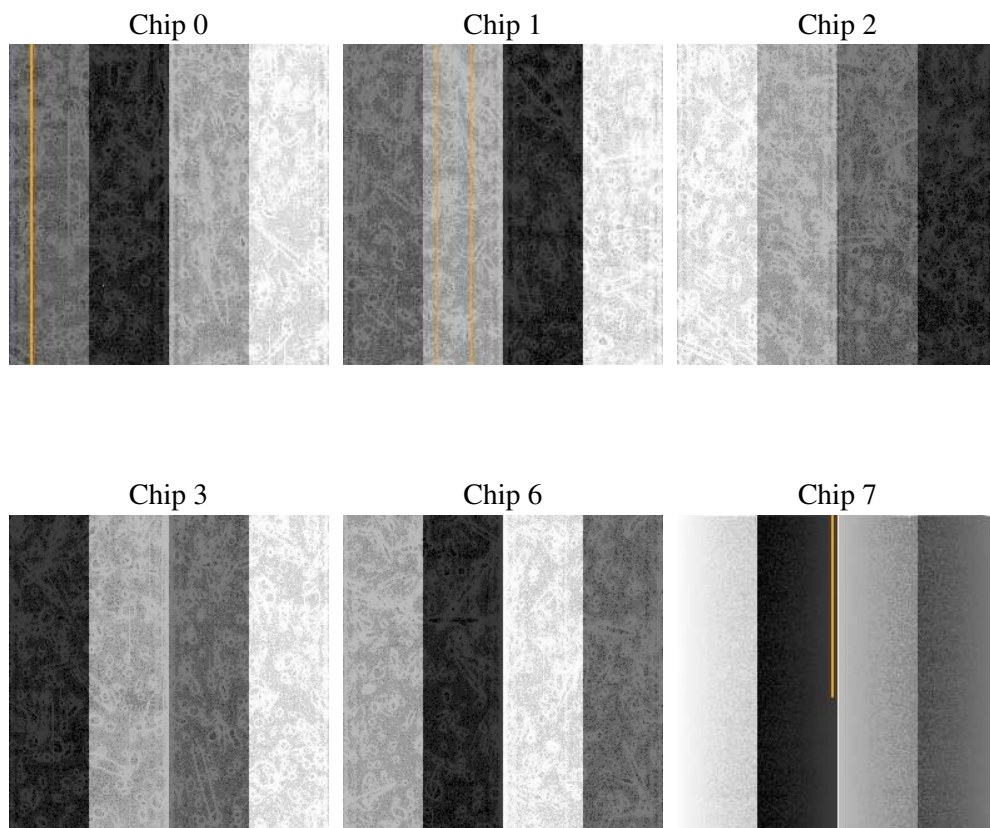
2 OBI

2.1 OBI

2.1.1 Images



2.1.2 Bias



2.1.3 Parameters

obi_num	1
ascdsver	7.6.9
caldbver	3.2.3
date	2006-10-16T08:40:29
revision	2

sched_exp_time	0.0
ontime	8465.5028435588
ontime0	4469.3780922592
ontime1	4576.3311766386
ontime2	4281.4003021121
ontime3	4388.3533777595
ontime6	4696.2487407327
ontime7	8465.5028435588
l1events	1547932

2.1.4 Events

	ccd 0	ccd 1	ccd 2	ccd 3	ccd 6	ccd 7
level 1 events	219626	224974	214857	220461	244265	423749
rejected events	27818	28144	27900	29103	31814	57411
rejected %	12%	12%	12%	13%	13%	13%

	ccd 0	ccd 1	ccd 2	ccd 3	ccd 6	ccd 7
grade 0 events	106423	108144	105136	108092	115839	64042
	48%	48%	48%	49%	47%	15%
grade 1 events	560	467	609	604	546	145
	0%	0%	0%	0%	0%	0%
grade 2 events	33506	35058	31372	32288	36483	112951
	15%	15%	14%	14%	14%	26%
grade 3 events	12293	12515	12137	12563	13268	26404
	5%	5%	5%	5%	5%	6%
grade 4 events	12144	12319	12099	12438	13012	25684
	5%	5%	5%	5%	5%	6%
grade 5 events	2062	1991	1856	2063	2352	7370
	0%	0%	0%	0%	0%	1%
grade 6 events	27578	28920	26342	26118	34003	137405
	12%	12%	12%	11%	13%	32%
grade 7 events	25060	25560	25306	26295	28762	49748
	11%	11%	11%	11%	11%	11%

2.2 Compared Parameters

Parameter	Planned	Actual	Parameter	Planned	Actual
Instrument	ACIS	ACIS	Obspar format version number	6	6
Detector	ACIS-012367	ACIS-012367	Obspar file type	PREDICTED	ACTUAL
Grating	NONE	NONE	Obspar update status	NONE	UPDATED
Data mode	FAINT	FAINT	On-chip summing requested	N	N
Observation mode	SECONDARY	SECONDARY	Subarray requested	NONE	NONE
Pointing RA	0	114.9973852026223	Alternating exposures requested	N	N
Pointing Dec	0	14.22847206368516	Primary exposure time	3.2	3.2
Pointing Roll	0.0	62.2094000725528			
SIM focus pos (mm)	-0.782348	-0.6828225247311905			
SIM defocus (mm)	0	0.8505141146731063			
SIM translation stage pos (mm)	-233.592463	250.4635187648994			
SIM translation stage offset (mm)	0	-0.007540371344731511			
Observation start time	157209763.618733	157209762.59402			
Observation start date	2002-12-25T13:22:44	2002-12-25T13:22:42			
Observation end time	157232729.769692	157232728.74498			
Observation end date	2002-12-25T19:45:30	2002-12-25T19:45:28			
Read mode	TIMED	TIMED			

2.3 Aspect

2.4 Star Slots

2.5 FID Slots

A Summary

A.1 Status

V&V Scientist	Jen Lauer
V&V Date (YYYY-MM-DD)	2006.10.16
V&V Edition	1
V&V Disposition and Status	OK
V&V Charge Time	8.46355852

A.2 Comments

The ACIS focal plane temperature was above calibration limits for the entire observation.