

# V&V Reference Report

## L2 ASCDS Version : 7.6.9

Observation 60907 - L2 Version 001  
Chandra X-Ray Center

L2 Processing Date : Oct 16 2006

## Contents

<b>1</b>	<b>Front</b>	<b>2</b>
<b>2</b>	<b>OBI</b>	<b>3</b>
2.1	OBI . . . . .	3
2.1.1	Images . . . . .	3
2.1.2	Bias . . . . .	3
2.1.3	Parameters . . . . .	4
2.1.4	Events . . . . .	4
2.2	Compared Parameters . . . . .	5
2.3	Aspect . . . . .	6
2.4	Star Slots . . . . .	8
2.5	FID Slots . . . . .	8
<b>A</b>	<b>Summary</b>	<b>9</b>
A.1	Status . . . . .	9
A.2	Comments . . . . .	9

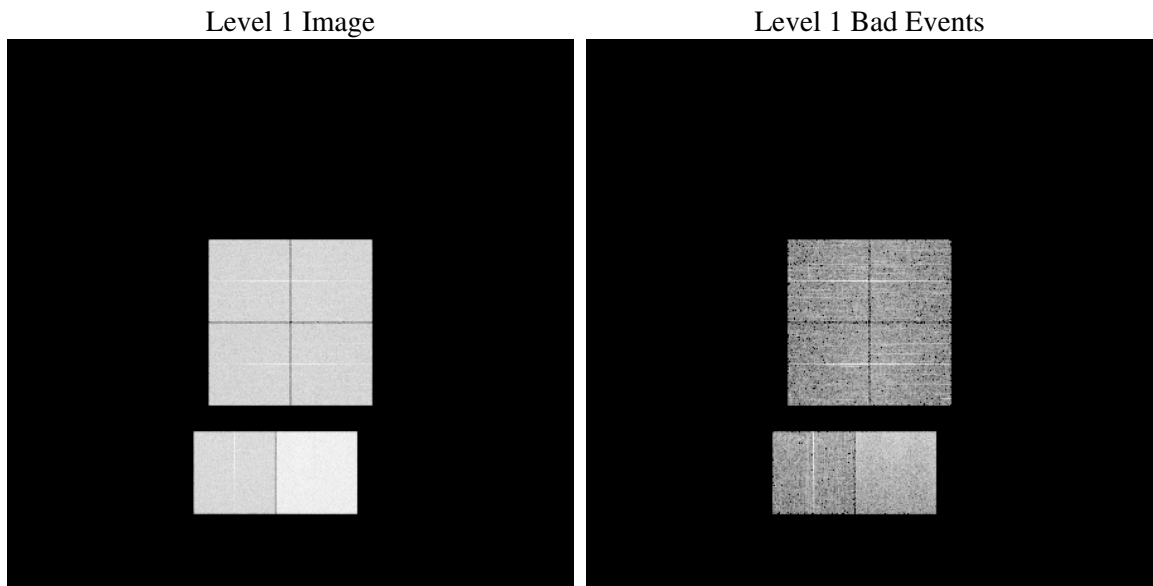
# 1 Front

seq_num	&#160
obs_id	60907
title	ACIS-012367 diagnostics
observer	CHANDRA engineering request/realtime commanding
object	&#160
dtcycle	0
cycle	P
ra_targ	0.0
dec_targ	0.0
ra_nom	94.164888416615
dec_nom	49.582657894919
roll_nom	184.41524241569
revision	2
ontime	7795.1999709606
livetime	7696.4924552224
ontime0	4064.840919286
ontime1	4213.9262176752
ontime2	3936.0039118528
ontime3	3990.9364458919
ontime6	4295.7944241166
ontime7	7795.1999709606
l2events	1186762

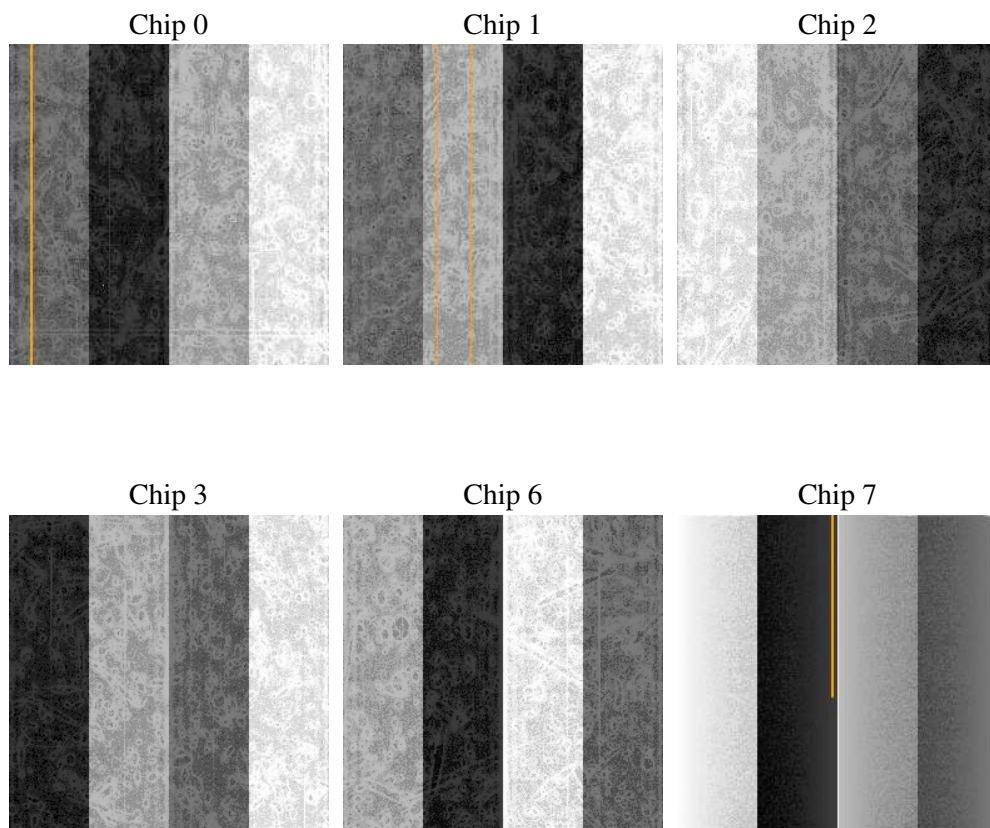
## 2 OBI

### 2.1 OBI

#### 2.1.1 Images



#### 2.1.2 Bias



### 2.1.3 Parameters

obi_num	1
ascdsver	7.6.9
caldbver	3.2.3
date	2006-10-16T08:49:15
revision	2

sched_exp_time	0.0
ontime	7797.8494956791
ontime0	4067.4904440045
ontime1	4216.5757423937
ontime2	3937.8505373299
ontime3	3992.9472313821
ontime6	4297.6000096202
ontime7	7797.8494956791
l1events	1428541

### 2.1.4 Events

	ccd 0	ccd 1	ccd 2	ccd 3	ccd 6	ccd 7
level 1 events	202595	208769	197977	201933	224432	392835
rejected events	27451	26742	25834	27757	29246	50514
rejected %	13%	12%	13%	13%	13%	12%

	ccd 0	ccd 1	ccd 2	ccd 3	ccd 6	ccd 7
grade 0 events	96822	100211	96681	98631	106768	64304
	47%	48%	48%	48%	47%	16%
grade 1 events	507	452	579	593	505	149
	0%	0%	0%	0%	0%	0%
grade 2 events	30787	32333	29586	29466	33794	102009
	15%	15%	14%	14%	15%	25%
grade 3 events	11339	11532	11072	11155	12153	26293
	5%	5%	5%	5%	5%	6%
grade 4 events	11149	11601	10967	11309	12042	25797
	5%	5%	5%	5%	5%	6%
grade 5 events	1783	1815	1780	1984	2140	6929
	0%	0%	0%	0%	0%	1%
grade 6 events	25201	26484	23966	23746	30569	124082
	12%	12%	12%	11%	13%	31%
grade 7 events	25007	24341	23346	25049	26461	43272
	12%	11%	11%	12%	11%	11%

## 2.2 Compared Parameters

Parameter	Planned	Actual	Parameter	Planned	Actual
Instrument	ACIS	ACIS	Obspar format version number	6	6
Detector	ACIS-012367	ACIS-012367	Obspar file type	PREDICTED	ACTUAL
Grating	NONE	NONE	Obspar update status	NONE	UPDATED
Data mode	FAINT	FAINT	On-chip summing requested	N	N
Observation mode	SECONDARY	SECONDARY	Subarray requested	NONE	NONE
Pointing RA	0	94.16488841661483	Alternating exposures requested	N	N
Pointing Dec	0	49.582657894919	Primary exposure time	0.000000	3.2
Pointing Roll	0.0	184.4152424156939			
SIM focus pos (mm)	-0.782348	-0.6828225247311905			
SIM defocus (mm)	0	0.8505141146731063			
SIM translation stage pos (mm)	-233.592463	250.4635187648994			
SIM translation stage offset (mm)	0	-0.007540371344731511			
Observation start time	157400514.076724	157400513.05199			
Observation start date	2002-12-27T18:21:54	2002-12-27T18:21:53			
Observation end time	157412240.077214	157412239.05248			
Observation end date	2002-12-27T21:37:20	2002-12-27T21:37:19			
Read mode	TIMED	TIMED			

## 2.3 Aspect



## **2.4 Star Slots**

## **2.5 FID Slots**



## A Summary

### A.1 Status

V&V Scientist	Jen Lauer
V&V Date (YYYY-MM-DD)	2006.10.16
V&V Edition	1
V&V Disposition and Status	OK
V&V Charge Time	7.79519997

### A.2 Comments