

V&V Reference Report

L2 ASCDS Version : 7.6.10

Observation 62857 - L2 Version 001
Chandra X-Ray Center

L2 Processing Date : Jan 13 2007

Contents

1	Front	2
2	OBI	3
2.1	OBI	3
2.1.1	Images	3
2.1.2	Bias	3
2.1.3	Parameters	4
2.1.4	Events	4
2.2	Compared Parameters	5
2.3	Star Slots	6
2.4	FID Slots	6
A	Summary	7
A.1	Status	7
A.2	Comments	7

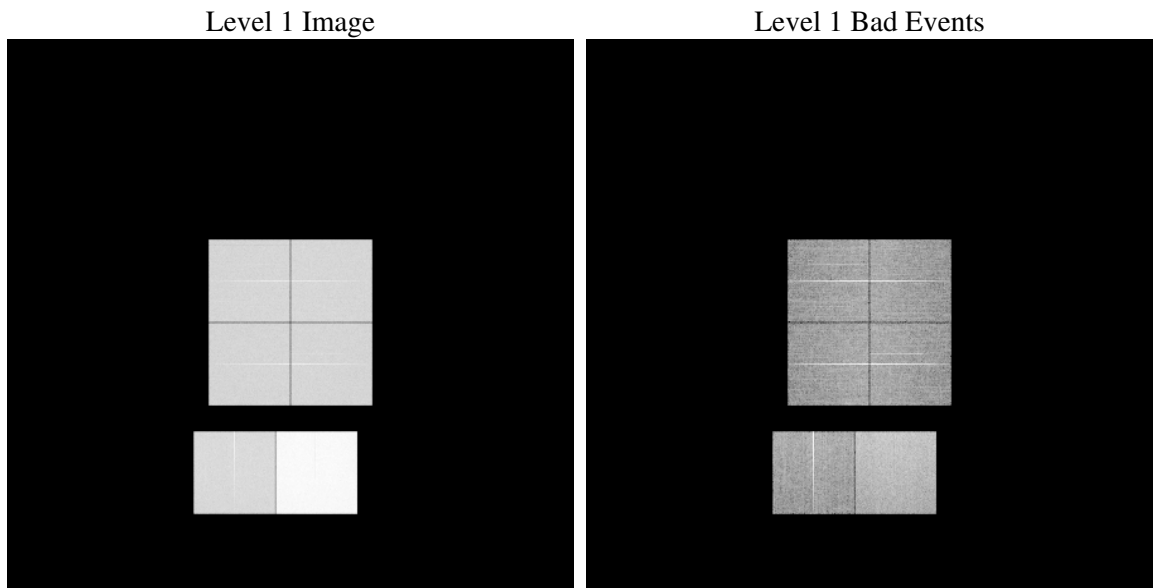
1 Front

seq_num	
obs_id	62857
title	ACIS-012367 diagnostics
observer	CHANDRA engineering request/realtime commanding
object	
dtcycle	0
cycle	P
ra_targ	0.0
dec_targ	0.0
ra_nom	140.98325106132
dec_nom	60.027388209415
roll_nom	74.22549755755
revision	2
ontime	35171.657620177
livetime	34726.29291356
ontime0	13891.582261056
ontime1	14072.89916347
ontime2	13372.837755069
ontime3	13492.755597189
ontime6	14604.426872313
ontime7	35171.657620177
l2events	5888396

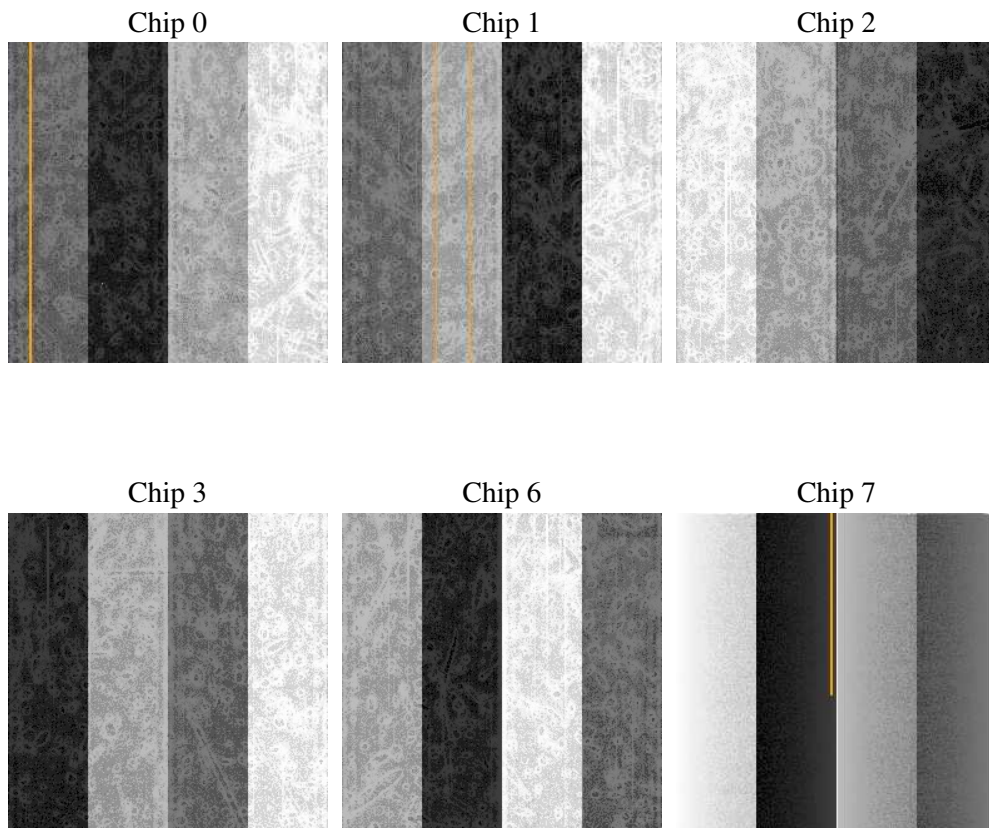
2 OBI

2.1 OBI

2.1.1 Images



2.1.2 Bias



2.1.3 Parameters

obi_num	0
ascdsver	7.6.10
caldbver	3.3.0
date	2007-01-13T19:03:49
revision	2

sched_exp_time	0.0
ontime	35171.657620177
ontime0	13891.582261056
ontime1	14072.89916347
ontime2	13372.837755069
ontime3	13492.755597189
ontime6	14604.426872313
ontime7	35171.657620177
l1events	6818905

2.1.4 Events

	ccd 0	ccd 1	ccd 2	ccd 3	ccd 6	ccd 7
level 1 events	892528	907631	875461	886203	988165	2268917
rejected events	97632	98060	99143	101348	107370	180382
rejected %	10%	10%	11%	11%	10%	7%

	ccd 0	ccd 1	ccd 2	ccd 3	ccd 6	ccd 7
grade 0 events	439408	448052	433215	440315	481399	532575
	49%	49%	49%	49%	48%	23%
grade 1 events	2312	2209	2078	2218	2261	1343
	0%	0%	0%	0%	0%	0%
grade 2 events	140709	142817	137191	138208	152817	462928
	15%	15%	15%	15%	15%	20%
grade 3 events	50249	51402	48700	49675	54319	213257
	5%	5%	5%	5%	5%	9%
grade 4 events	50344	51477	48711	49295	54488	211558
	5%	5%	5%	5%	5%	9%
grade 5 events	7032	7207	6658	6920	8153	36848
	0%	0%	0%	0%	0%	1%
grade 6 events	115836	117644	109923	108963	139590	672242
	12%	12%	12%	12%	14%	29%
grade 7 events	86638	86823	88985	90609	95138	138166
	9%	9%	10%	10%	9%	6%

2.2 Compared Parameters

Parameter	Planned	Actual	Parameter	Planned	Actual
Instrument	ACIS	ACIS	Obspar format version number	6	6
Detector	ACIS-012367	ACIS-012367	Obspar file type	PREDICTED	ACTUAL
Grating	NONE	NONE	Obspar update status	NONE	UPDATED
Data mode	FAINT	FAINT	On-chip summing requested	N	N
Observation mode	SECONDARY	SECONDARY	Subarray requested	NONE	NONE
Pointing RA	0	140.9832510613232	Alternating exposures requested	N	N
Pointing Dec	0	60.02738820941512	Primary exposure time	3.2	3.2
Pointing Roll	0.0	74.2254975575495			
SIM focus pos (mm)	-0.782348	-0.6828225247311905			
SIM defocus (mm)	0	0.8505141146731063			
SIM translation stage pos (mm)	-233.592463	250.466033080201			
SIM translation stage offset (mm)	0	-0.01005468664627074			
Observation start time	121638118.858949	121638118.09051			
Observation start date	2001-11-08T20:21:59	2001-11-08T20:21:58			
Observation end time	121677552.660517	121677551.89209			
Observation end date	2001-11-09T07:19:13	2001-11-09T07:19:11			
Read mode	TIMED	TIMED			

2.3 Star Slots

2.4 FID Slots

A Summary

A.1 Status

V&V Scientist	Doug Morgan
V&V Date (YYYY-MM-DD)	2007.01.14
V&V Edition	1
V&V Disposition and Status	OK
V&V Charge Time	35.1716576

A.2 Comments