

V&V Reference Report

L2 ASCDS Version : 8.4.5

Observation 61751 - L2 Version 4
Chandra X-Ray Center

L2 Processing Date : Sep 16 2012

Contents

1	Front	2
2	OBI	3
2.1	OBI	3
2.1.1	Images	3
2.1.2	Bias	3
2.1.3	Parameters	4
2.1.4	Events	4
2.2	Compared Parameters	5
2.3	Star Slots	6
2.4	FID Slots	6
A	Summary	7
A.1	Status	7
A.2	Comments	7

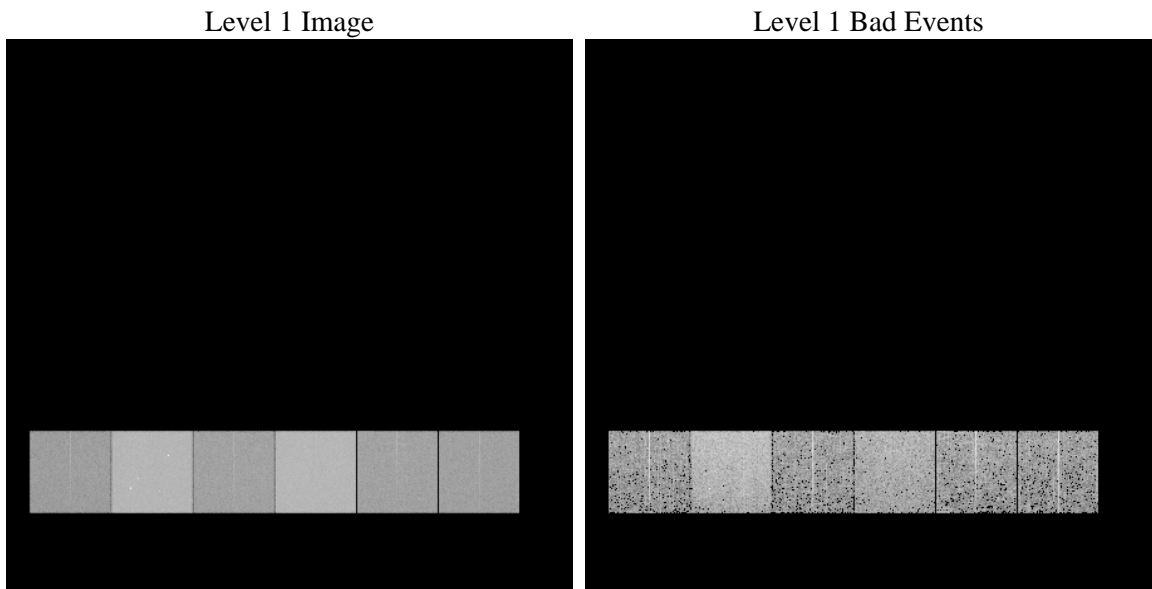
1 Front

seq_num	 	Sequence number
obs_id	61751	Observation id
title	ACIS-456789 diagnostics	Proposal title
observer	CHANDRA engineering request/realtime commanding	Principal investig
object	 	Source name
dtcycle	0	
cycle	P	events from which exps? Prim/Second/Both
ra_targ	0.0	Observer's specified target RA [deg]
dec_targ	0.0	Observer's specified target Dec [deg]
ra_nom	166.01000774463	Nominal RA [deg]
dec_nom	-19.972860365963	Nominal Dec [deg]
roll_nom	38.243225644596	Nominal Roll [deg]
revision	4	Processing version of data
ontime	4951.0038545281	Sum of GTIs [s]
livetime	4888.3112625854	Livetime [s]
ontime4	2008.2916773856	Sum of GTIs [s]
ontime5	5301.0690006912	Sum of GTIs [s]
ontime6	2226.8184160739	Sum of GTIs [s]
ontime7	4951.0038545281	Sum of GTIs [s]
ontime8	2228.7230780125	Sum of GTIs [s]
ontime9	2157.2153270692	Sum of GTIs [s]
l2events	1239224	Number of level 2 events

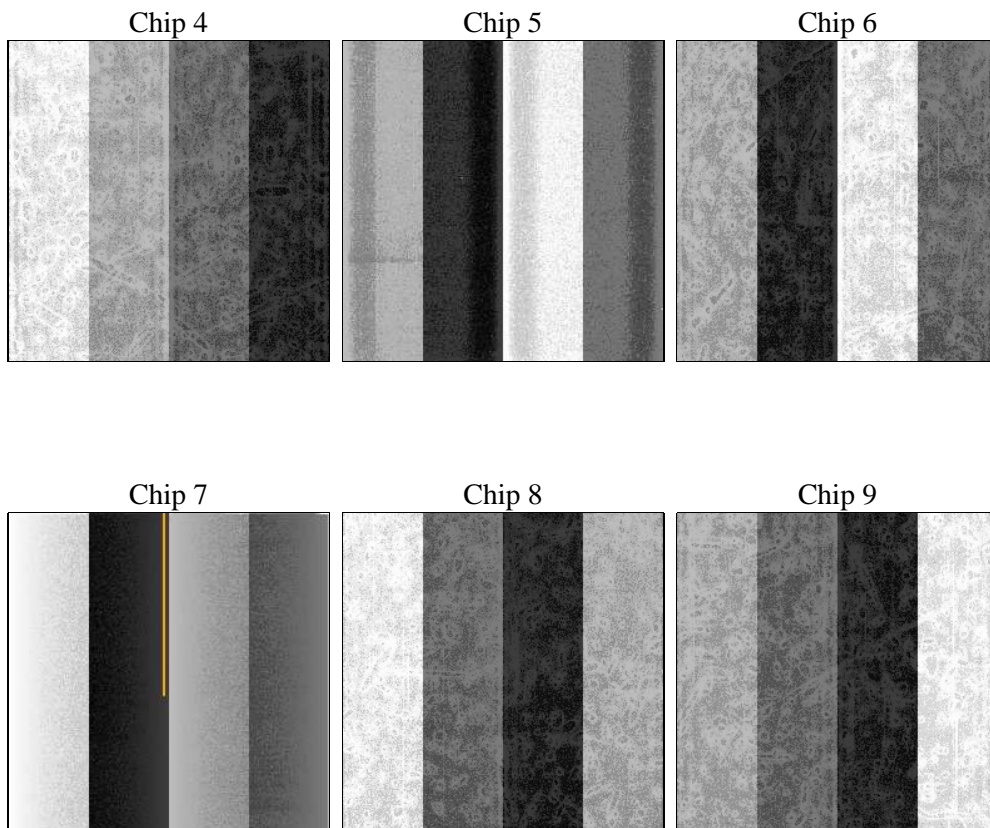
2 OBI

2.1 OBI

2.1.1 Images



2.1.2 Bias



2.1.3 Parameters

obi_num	0	Obi number	sched_exp_time	0.0	[s] Scheduled observation exposure time
ascdsver	8.4.5	Processing system revision	ontime	4951.0038545281	Sum of GTIs [s]
caldbver	4.5.1.1	 	ontime4	2008.2916773856	Sum of GTIs [s]
date	2012-09-16T05:00:43	Date and time of file creation	ontime5	5301.0690006912	Sum of GTIs [s]
revision	4	Processing version of data	ontime6	2226.8184160739	Sum of GTIs [s]
			ontime7	4951.0038545281	Sum of GTIs [s]
			ontime8	2228.7230780125	Sum of GTIs [s]
			ontime9	2157.2153270692	Sum of GTIs [s]
			l1events	1426282	Number of level 1 events

2.1.4 Events

	ccd 4	ccd 5	ccd 6	ccd 7	ccd 8	ccd 9		ccd 4	ccd 5	ccd 6	ccd 7	ccd 8	ccd 9
level 1 events	151990	368096	179883	377725	180538	168050	grade 0 events	76915	86030	89016	90999	89612	83210
rejected events	17165	36600	17260	25140	18669	16621		50%	23%	49%	24%	49%	49%
rejected %	11%	9%	9%	6%	10%	9%	grade 1 events	398	298	400	267	458	411
								0%	0%	0%	0%	0%	0%
							grade 2 events	23703	115207	28171	78068	28408	26828
								15%	31%	15%	20%	15%	15%
							grade 3 events	8184	22111	10210	36171	10213	9432
								5%	6%	5%	9%	5%	5%
							grade 4 events	8187	22159	10173	35604	10247	9399
								5%	6%	5%	9%	5%	5%
							grade 5 events	1165	7146	1385	5506	1488	1324
								0%	1%	0%	1%	0%	0%
							grade 6 events	17836	85989	25284	111743	23389	22560
								11%	23%	14%	29%	12%	13%
							grade 7 events	15602	29156	15244	19367	16723	14886
								10%	7%	8%	5%	9%	8%

2.2 Compared Parameters

Parameter	Planned	Actual	Parameter	Planned	Actual
Instrument	ACIS	ACIS	Obspar format version number	7	7
Detector	ACIS-456789	ACIS-456789	Obspar file type	PREDICTED	ACTUAL
Grating	NONE	NONE	Obspar update status	NONE	UPDATED
Data mode	FAINT	FAINT	On-chip summing requested	N	N
Observation mode	SECONDARY	SECONDARY	Subarray requested	NONE	NONE
[deg] Pointing RA	0	166.0100077446324	Alternating exposures requested	N	N
[deg] Pointing Dec	0	-19.97286036596267	[s] Primary exposure time	0.000000	3.2
[deg] Pointing Roll	0.0	38.24322564459578			
[mm] SIM focus pos	-0.684267	-0.6828225247311905			
[mm] SIM defocus	0	0.8505141146731063			
[mm] SIM translation stage pos	-190.132523	250.466033080201			
[mm] SIM translation stage offset	0	-0.01005468664627074			
[s] Observation start time (MET)	97770625.97499999	97770625.20697799			
Observation start date	2001-02-05T14:30:26	2001-02-05T14:30:25			
[s] Observation end time (MET)	97782069.07600001	97782068.307419			
Observation end date	2001-02-05T17:41:09	2001-02-05T17:41:08			
Read mode	TIMED	TIMED			

2.3 Star Slots

2.4 FID Slots

A Summary

A.1 Status

V&V Scientist	Jen Lauer
V&V Date (YYYY-MM-DD)	2012.09.19
V&V Edition	1
V&V Disposition and Status	OK
V&V Charge Time	4.9510038545281

A.2 Comments