

V&V Reference Report

L2 ASCDS Version : 7.6.9

Observation 61736 - L2 Version 001
Chandra X-Ray Center

L2 Processing Date : Nov 8 2006

Contents

1	Front	2
2	OBI	3
2.1	OBI	3
2.1.1	Images	3
2.1.2	Bias	3
2.1.3	Parameters	4
2.1.4	Events	4
2.2	Compared Parameters	5
2.3	Aspect	6
2.4	Star Slots	8
2.5	FID Slots	8
A	Summary	9
A.1	Status	9
A.2	Comments	9

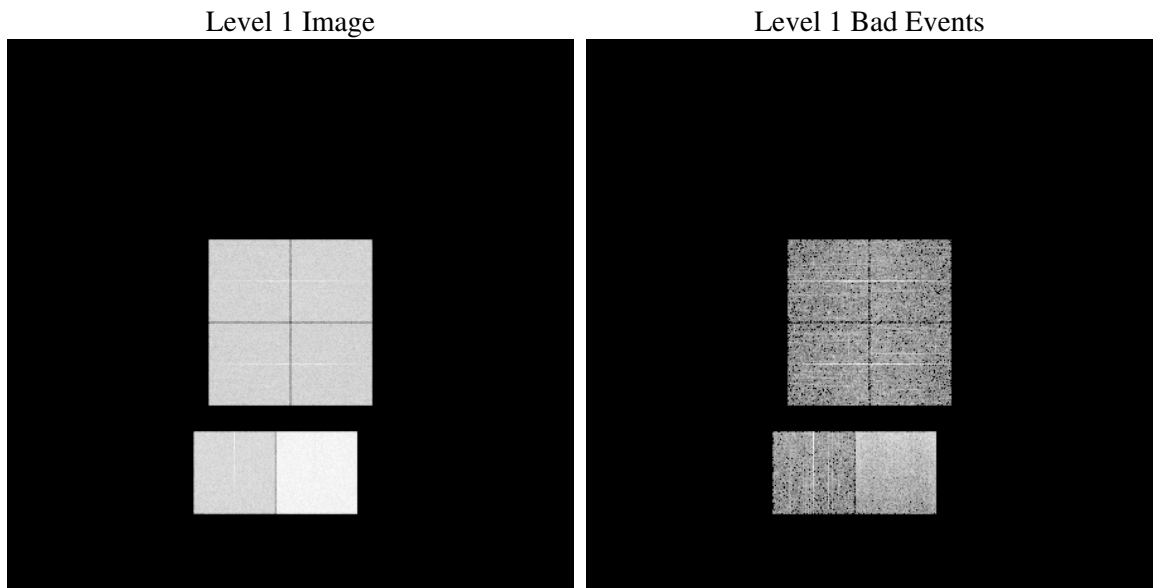
1 Front

seq_num	
obs_id	61736
title	ACIS-012367 diagnostics
observer	CHANDRA engineering request/realtime commanding
object	
dtcycle	0
cycle	P
ra_targ	0.0
dec_targ	0.0
ra_nom	343.12295917022
dec_nom	77.259676425872
roll_nom	347.00500088993
revision	2
ontime	5871.4960229844
livetime	5797.1476049509
ontime0	2429.6056074202
ontime1	2517.1545477808
ontime2	2384.313466534
ontime3	2377.6670271456
ontime6	2663.0827097744
ontime7	5871.4960229844
l2events	1229787

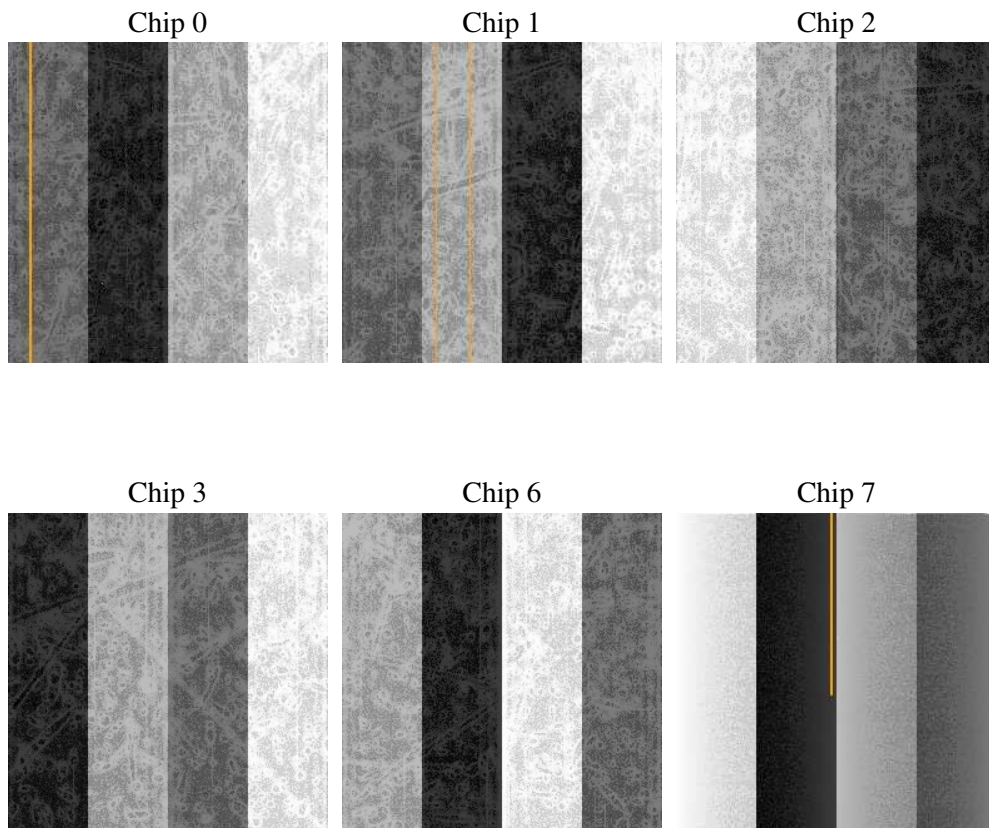
2 OBI

2.1 OBI

2.1.1 Images



2.1.2 Bias



2.1.3 Parameters

obi_num	0
ascdsver	7.6.9
caldbver	3.2.3
date	2006-11-09T00:22:48
revision	2

sched_exp_time	0.0
ontime	5872.7091062814
ontime0	2430.7776507139
ontime1	2518.2855510861
ontime2	2385.403429836
ontime3	2378.9211504459
ontime6	2664.1316330731
ontime7	5872.7091062814
l1events	1422580

2.1.4 Events

	ccd 0	ccd 1	ccd 2	ccd 3	ccd 6	ccd 7
level 1 events	187437	193564	187869	187379	216191	450140
rejected events	18443	18678	19935	20151	21061	41509
rejected %	9%	9%	10%	10%	9%	9%

	ccd 0	ccd 1	ccd 2	ccd 3	ccd 6	ccd 7
grade 0 events	92924	96595	93706	93732	106945	79785
	49%	49%	49%	50%	49%	17%
grade 1 events	541	505	473	508	566	198
	0%	0%	0%	0%	0%	0%
grade 2 events	29738	30879	29589	29072	33482	119702
	15%	15%	15%	15%	15%	26%
grade 3 events	10818	11035	10438	10592	12114	32166
	5%	5%	5%	5%	5%	7%
grade 4 events	10608	11101	10336	10624	11975	31579
	5%	5%	5%	5%	5%	7%
grade 5 events	1439	1486	1379	1404	1698	6097
	0%	0%	0%	0%	0%	1%
grade 6 events	24906	25276	23865	23208	30614	145399
	13%	13%	12%	12%	14%	32%
grade 7 events	16463	16687	18083	18239	18797	35214
	8%	8%	9%	9%	8%	7%

2.2 Compared Parameters

Parameter	Planned	Actual	Parameter	Planned	Actual
Instrument	ACIS	ACIS	Obspar format version number	6	6
Detector	ACIS-012367	ACIS-012367	Obspar file type	PREDICTED	ACTUAL
Grating	NONE	NONE	Obspar update status	NONE	UPDATED
Data mode	FAINT	FAINT	On-chip summing requested	N	N
Observation mode	SECONDARY	SECONDARY	Subarray requested	NONE	NONE
Pointing RA	0	343.1229591702164	Alternating exposures requested	N	N
Pointing Dec	0	77.25967642587162	Primary exposure time	3.2	3.2
Pointing Roll	0.0	347.0050008899283			
SIM focus pos (mm)	-0.782348	-1.428180813131781			
SIM defocus (mm)	0	0.1051558262725154			
SIM translation stage pos (mm)	-233.592463	250.466033080201			
SIM translation stage offset (mm)	0	-0.01005468664627074			
Observation start time	98684360.21064299	98684359.44217999			
Observation start date	2001-02-16T04:19:20	2001-02-16T04:19:19			
Observation end time	98696276.86109699	98696276.09264			
Observation end date	2001-02-16T07:37:57	2001-02-16T07:37:56			
Read mode	TIMED	TIMED			

2.3 Aspect

2.4 Star Slots

2.5 FID Slots

A Summary

A.1 Status

V&V Scientist	Jen Lauer
V&V Date (YYYY-MM-DD)	2006.11.09
V&V Edition	1
V&V Disposition and Status	OK
V&V Charge Time	5.87149602

A.2 Comments