

V&V Reference Report

L2 ASCDS Version : 7.6.9

Observation 61713 - L2 Version 001
Chandra X-Ray Center

L2 Processing Date : Nov 7 2006

Contents

1	Front	2
2	OBI	3
2.1	OBI	3
2.1.1	Images	3
2.1.2	Bias	3
2.1.3	Parameters	4
2.1.4	Events	4
2.2	Compared Parameters	5
2.3	Aspect	6
2.4	Star Slots	8
2.5	FID Slots	8
A	Summary	9
A.1	Status	9
A.2	Comments	9

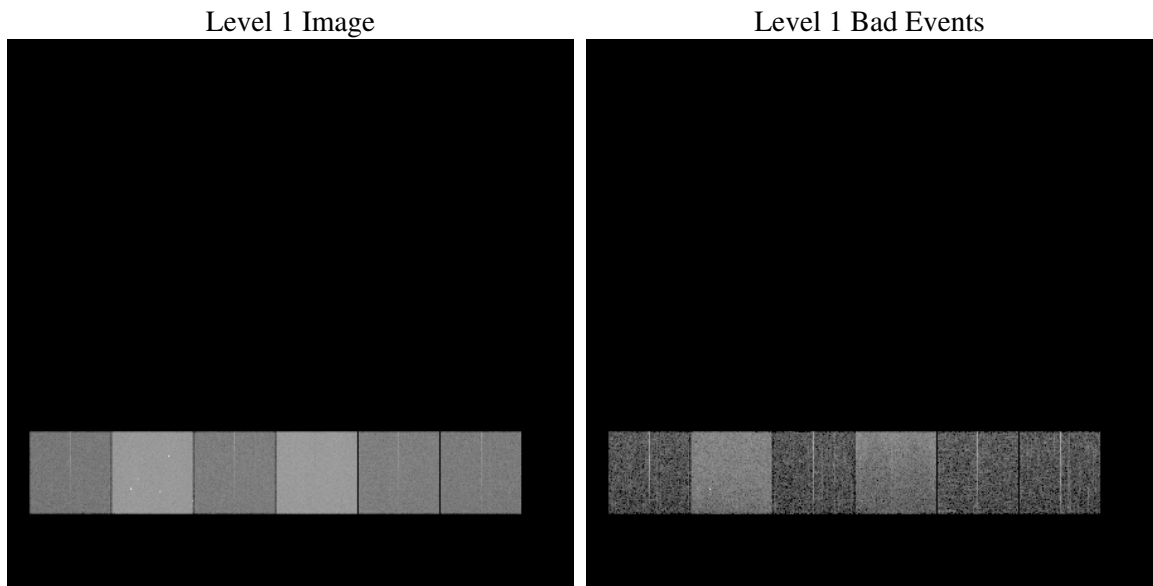
1 Front

seq_num	
obs_id	61713
title	ACIS-456789 diagnostics
observer	CHANDRA engineering request/realtime commanding
object	
dtcycle	0
cycle	P
ra_targ	0.0
dec_targ	0.0
ra_nom	120.01134187636
dec_nom	19.973377499116
roll_nom	259.10327123083
revision	2
ontime	5464.7255647629
livetime	5395.5279191992
ontime4	2133.0952692926
ontime5	5843.9587244838
ontime6	2343.7216792256
ontime7	5464.7255647629
ontime8	2402.1422000378
ontime9	2272.2957491726
l2events	1293136

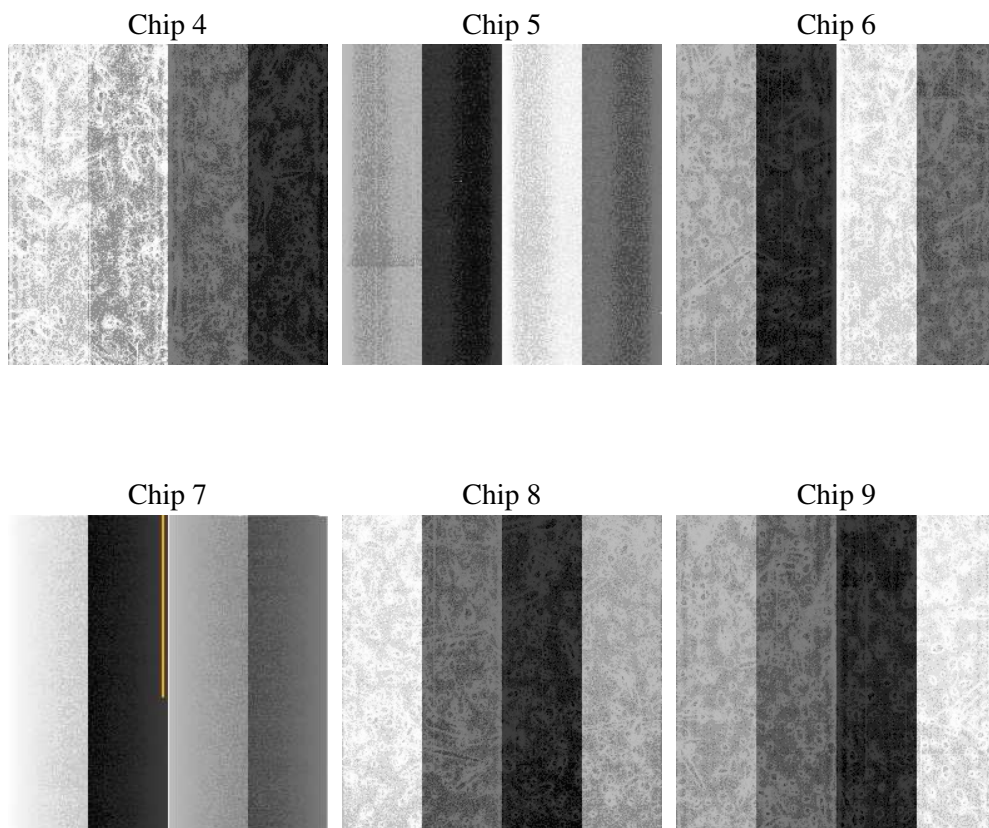
2 OBI

2.1 OBI

2.1.1 Images



2.1.2 Bias



2.1.3 Parameters

obi_num	0
ascdsver	7.6.9
caldsver	3.2.3
date	2006-11-08T02:04:43
revision	2

sched_exp_time	0.0
ontime	5529.1763266474
ontime4	2158.5308100134
ontime5	5914.8503867686
ontime6	2372.4392999411
ontime7	5529.1763266474
ontime8	2430.7777407467
ontime9	2301.1364898831
l1events	1542534

2.1.4 Events

	ccd 4	ccd 5	ccd 6	ccd 7	ccd 8	ccd 9
level 1 events	160841	405941	187879	417905	193591	176377
rejected events	20645	59542	21008	45577	22406	21400
rejected %	12%	14%	11%	10%	11%	12%

	ccd 4	ccd 5	ccd 6	ccd 7	ccd 8	ccd 9
grade 0 events	80340	44918	92427	73080	95189	86099
	49%	11%	49%	17%	49%	48%
grade 1 events	437	163	456	173	473	481
	0%	0%	0%	0%	0%	0%
grade 2 events	24868	168038	29087	110738	30831	27716
	15%	41%	15%	26%	15%	15%
grade 3 events	8793	12288	10332	29398	10941	9832
	5%	3%	5%	7%	5%	5%
grade 4 events	8765	12004	10367	29254	10856	9839
	5%	2%	5%	7%	5%	5%
grade 5 events	1297	6717	1511	6137	1577	1512
	0%	1%	0%	1%	0%	0%
grade 6 events	19292	113566	26785	134332	25509	23472
	11%	27%	14%	32%	13%	13%
grade 7 events	17049	48247	16914	34793	18215	17426
	10%	11%	9%	8%	9%	9%

2.2 Compared Parameters

Parameter	Planned	Actual	Parameter	Planned	Actual
Instrument	ACIS	ACIS	Obspar format version number	6	6
Detector	ACIS-456789	ACIS-456789	Obspar file type	PREDICTED	ACTUAL
Grating	NONE	NONE	Obspar update status	NONE	UPDATED
Data mode	FAINT	FAINT	On-chip summing requested	N	N
Observation mode	SECONDARY	SECONDARY	Subarray requested	NONE	NONE
Pointing RA	0	120.0113418763589	Alternating exposures requested	N	N
Pointing Dec	0	19.9733774991162	Primary exposure time	3.2	3.2
Pointing Roll	0.0	259.1032712308321			
SIM focus pos (mm)	-0.684267	-0.6828225247311905			
SIM defocus (mm)	0	0.8505141146731063			
SIM translation stage pos (mm)	-190.132523	250.4635187648994			
SIM translation stage offset (mm)	0	-0.007540371344731511			
Observation start time	100326020.77401	100326020.00555			
Observation start date	2001-03-07T04:20:21	2001-03-07T04:20:20			
Observation end time	100337976.374472	100337975.60601			
Observation end date	2001-03-07T07:39:36	2001-03-07T07:39:35			
Read mode	TIMED	TIMED			

2.3 Aspect

2.4 Star Slots

2.5 FID Slots

A Summary

A.1 Status

V&V Scientist	Jen Lauer
V&V Date (YYYY-MM-DD)	2006.11.08
V&V Edition	1
V&V Disposition and Status	OK
V&V Charge Time	5.46472556

A.2 Comments