

V&V Reference Report

L2 ASCDS Version : 8.4.5

Observation 61712 - L2 Version 3
Chandra X-Ray Center

L2 Processing Date : Sep 12 2012

Contents

1	Front	2
2	OBI	3
2.1	OBI	3
2.1.1	Images	3
2.1.2	Bias	3
2.1.3	Parameters	4
2.1.4	Events	4
2.2	Compared Parameters	5
2.3	Star Slots	6
2.4	FID Slots	6
A	Summary	7
A.1	Status	7
A.2	Comments	7

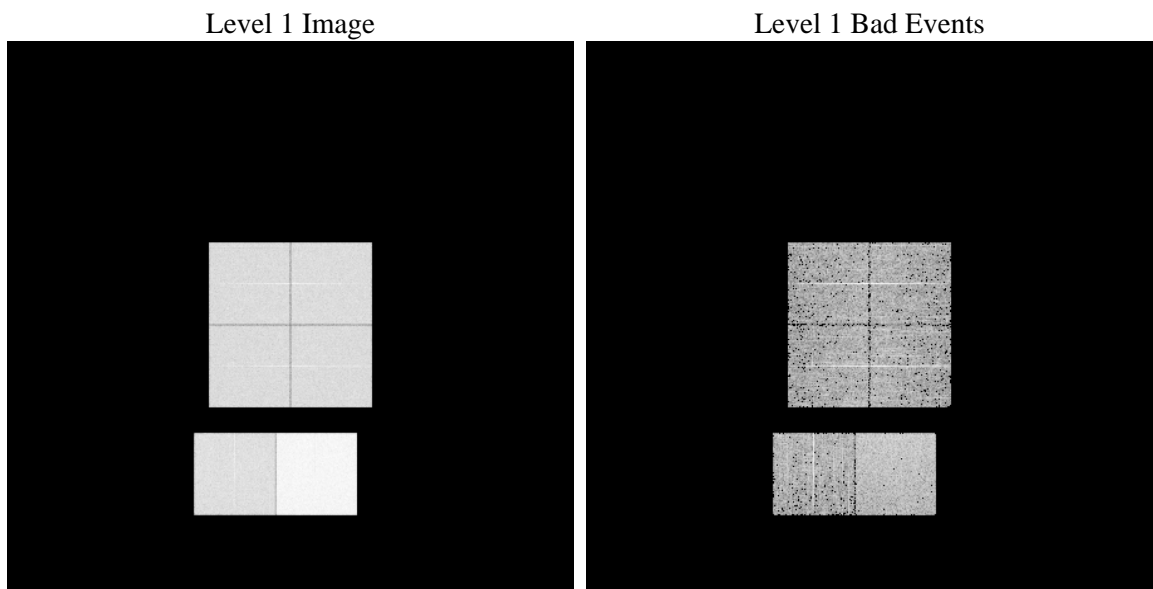
1 Front

seq_num	 	Sequence number
obs_id	61712	Observation id
title	ACIS-012367 diagnostics	Proposal title
observer	CHANDRA engineering request/realtime commanding	Principal investig
object	 	Source name
dtcycle	0	
cycle	P	events from which exps? Prim/Second/Both
ra_targ	0.0	Observer's specified target RA [deg]
dec_targ	0.0	Observer's specified target Dec [deg]
ra_nom	150.04022037734	Nominal RA [deg]
dec_nom	-44.996166084722	Nominal Dec [deg]
roll_nom	335.00991574649	Nominal Roll [deg]
revision	3	Processing version of data
ontime	6168.0687166899	Sum of GTIs [s]
livetime	6089.9649166341	Livetime [s]
ontime0	2442.1036858112	Sum of GTIs [s]
ontime1	2506.9652862698	Sum of GTIs [s]
ontime2	2370.8831151873	Sum of GTIs [s]
ontime3	2396.646936208	Sum of GTIs [s]
ontime6	2643.1705675423	Sum of GTIs [s]
ontime7	6168.0687166899	Sum of GTIs [s]
l2events	1231028	Number of level 2 events

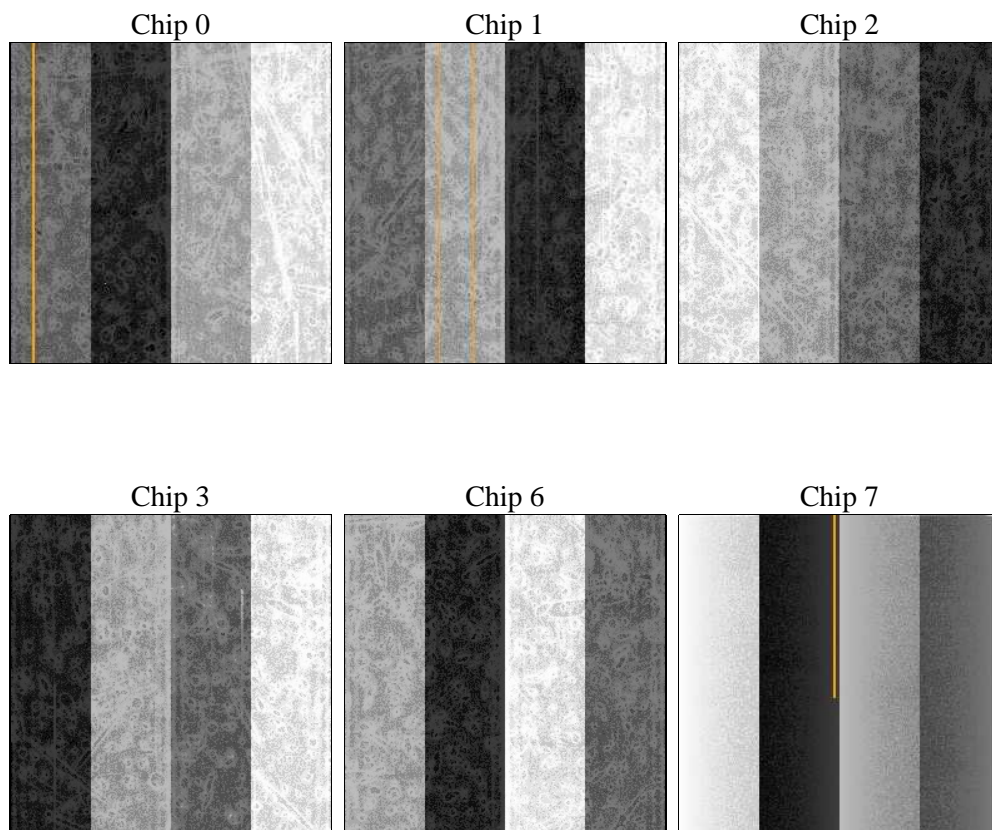
2 OBI

2.1 OBI

2.1.1 Images



2.1.2 Bias



2.1.3 Parameters

obi_num	0	Obi number	sched_exp_time	0.0	[s] Scheduled observation exposure time
ascdsver	8.4.5	Processing system revision	ontime	6168.0687166899	Sum of GTIs [s]
caldsver	4.5.1.1	 	ontime0	2442.1036858112	Sum of GTIs [s]
date	2012-09-12T08:43:00	Date and time of file creation	ontime1	2506.9652862698	Sum of GTIs [s]
revision	3	Processing version of data	ontime2	2370.8831151873	Sum of GTIs [s]
			ontime3	2396.646936208	Sum of GTIs [s]
			ontime6	2643.1705675423	Sum of GTIs [s]
			ontime7	6168.0687166899	Sum of GTIs [s]
			l1events	1417923	Number of level 1 events

2.1.4 Events

	ccd 0	ccd 1	ccd 2	ccd 3	ccd 6	ccd 7		ccd 0	ccd 1	ccd 2	ccd 3	ccd 6	ccd 7
level 1 events	184629	189622	182579	185033	210394	465666	grade 0 events	91021	93494	90675	91682	102698	111121
rejected events	19609	19662	20084	20330	22091	33237		49%	49%	49%	49%	48%	23%
rejected %	10%	10%	11%	10%	10%	7%	grade 1 events	496	498	493	475	514	305
								0%	0%	0%	0%	0%	0%
							grade 2 events	29073	30218	28612	29119	32884	96343
								15%	15%	15%	15%	15%	20%
							grade 3 events	10586	10621	10314	10456	11532	44178
								5%	5%	5%	5%	5%	9%
							grade 4 events	10478	10886	10094	10637	11608	44195
								5%	5%	5%	5%	5%	9%
							grade 5 events	1390	1553	1340	1422	1660	7175
								0%	0%	0%	0%	0%	1%
							grade 6 events	24071	24741	22800	23018	29581	136822
								13%	13%	12%	12%	14%	29%
							grade 7 events	17514	17611	18251	18224	19917	25527
								9%	9%	9%	9%	9%	5%

2.2 Compared Parameters

Parameter	Planned	Actual	Parameter	Planned	Actual
Instrument	ACIS	ACIS	Obspar format version number	7	7
Detector	ACIS-012367	ACIS-012367	Obspar file type	PREDICTED	ACTUAL
Grating	NONE	NONE	Obspar update status	NONE	UPDATED
Data mode	FAINT	FAINT	On-chip summing requested	N	N
Observation mode	SECONDARY	SECONDARY	Subarray requested	NONE	NONE
[deg] Pointing RA	0	150.0402203773437	Alternating exposures requested	N	N
[deg] Pointing Dec	0	-44.9961660847215	[s] Primary exposure time	0.000000	3.2
[deg] Pointing Roll	0.0	335.0099157464878			
[mm] SIM focus pos	-0.782348	-0.6828225247311905			
[mm] SIM defocus	0	0.8505141146731063			
[mm] SIM translation stage pos	-233.592463	250.466033080201			
[mm] SIM translation stage offset	0	-0.01005468664627074			
[s] Observation start time (MET)	100511092.731	100511091.9627			
Observation start date	2001-03-09T07:44:53	2001-03-09T07:44:51			
[s] Observation end time (MET)	100522839.232	100522838.46315			
Observation end date	2001-03-09T11:00:39	2001-03-09T11:00:38			
Read mode	TIMED	TIMED			

2.3 Star Slots

2.4 FID Slots

A Summary

A.1 Status

V&V Scientist	Jen Lauer
V&V Date (YYYY-MM-DD)	2012.09.18
V&V Edition	1
V&V Disposition and Status	OK
V&V Charge Time	6.1680687166899

A.2 Comments